

Superslim The definitive formwork primary beam

Components

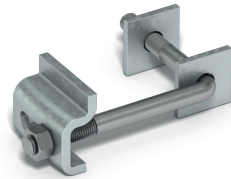
Turnbuckle and Plumbing Foot



Code	Description	Weight
SSU10016	Superslim Turnbuckle 914-1160	8.4kg
SSU10033	Superslim Plumbing Foot	11.5kg
SSX10046	Superslim 19mm Pin & R Clip	0.3kg

Timber Waling Clamp Assembly

Connects Soldiers to timber waling



Code	Description	Weight
BNU10054	Bolt - Metric Waling 117x117	0.3kg
BNU10055	Bolt - Metric Waling 176x127	0.4kg
SSU10017	Waling Clamp Plate	0.4kg
BNX20014	Washer - Plate 50x50x6x18mm	0.1kg
BNU16001	M16 Nut gr.8.8 BZP	0.03kg

Support Plate

AWL = 10kN



Code	Description	Weight
SSX10042	Superslim Form Support Plate	5.3kg
BNU16007	M16x40 Set Pin gr8.8 BZP	0.09kg
BNU16001	M16 Nut gr8.8 BZP	0.03kg

B Clamp

AWL = 3.25 kN / pair



Code	Description	Weight
RPX10005	"B" Clamp	0.7kg

Superslim The definitive formwork primary beam

Components

'G' Clamp

Connects scaffold tube to the soldier (does not project above the tube surface)



Code	Description	Weight
BNX16007	M16x220 Bolt gr8.8 BZP	0.4kg
BNX20020	Washer - Channel 150x75x18mm	0.7kg
RPX10008	'G' Clamp - Tube Type M16	0.6kg

Slimshor Tube Clamp

AWL = 6.25kN in slip / each



Code	Description	Weight
SSU10024	Slimshor Tube Clamp	1.3kg

Half Coupler



Code	Description	Weight
SFX10018	Half Coupler	0.5kg
BNU16008	M16x40 Set Pin gr8.8 C/Snk HTZP	0.05kg
BNU16001	M16 Nut gr8.8 BZP	0.03kg

Waling Clamp Plate



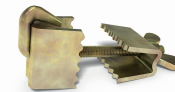
Code	Description	Weight
SSU10017	Superslim Waling Clamp Plate	0.4kg
BNU16002	M16 Round Washer BZP	0.1kg
BNU16013	M16x110 Bolt gr8.8 BZP	0.2kg
BNU16001	M16 Nut gr8.8 BZP	0.03kg

Alform Superslim Clamp



Code	Description	Weight
AFX20015	Clamp - Superslim	0.14kg
AFX20022	Bolt M12 Uni-fix	0.05kg
BNU12001	M12 Nut gr8.8 BZP	0.01kg
AFX20012	Clamp Assembly - Superslim	0.2kg

Universal Clamp



Code	Description	Weight
ALX10001	Universal Clamp	0.7kg

Superslim The definitive formwork primary beam

Components

Flange to Flange Wedge Clamp



Code	Description	Weight
ALX10002	Flange to Flange Wedge Clamp	0.5kg

Alshor Superslim Clamp



Code	Description	Weight
ASX10056	Alshor Superslim Clamp	0.7kg

15mm Rapid Tie Waler Plates



Code	Description	Weight
BTX10014	Waler Plate - Light 55kN	1.1kg
BTX10021	Waler Plate - Standard 70kN	1.4kg
BTX10004	Waler Plate - Heavy Duty 90kN	1.8kg

15mm Rapid Tie Angle Waler Plates



Code	Description	Weight
HTU10014	Waler Plate - Angle 3/4" 70kN	1.3kg

20mm Rapid Tie Waler Plates



Code	Description	Weight
BTX10029	Waler Plate - Hi Load 160kN	6.8kg

Porthole Bearing



Code	Description	Weight
SSX10039	Porthole Bearing 65kN	2.0kg

Superslim The definitive formwork primary beam

Components

Adjustable Base

Spreads and transfers loads from Superslim props where length adjustment is necessary - AWL=150kN (100kN when load is released via the jack handle).



Code	Description	Weight
SFU10025	Superslim Adjustable Base 365-515mm	19.0kg

Adjustable Rocking Head

Supports header beams where length adjustment is required - Adjustable range 440-590mm - AWL= 150kN (100kN where length adjustment is required)



Code	Description	Weight
SSU10026	Superslim Adjustable Head 440-590mm	24.6kg
AFX20003	Clamp Plate	0.1kg
BNX12009	M12x25 Set Pin gr8.8 BZP	0.04kg
BNC12002	M12x30 Set Pin gr8.8 BZP	0.04kg

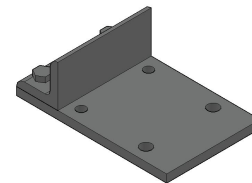
Rocking Head

Maximum angle of tilt = 28 degrees, AWL=150kN



Code	Description	Weight
SSU10023	Superslim Rocking Head 36mm	4.3kg
BNX10005	M10x20 Set Pin Gr 8.8 BZP	0.02kg
SSU10029	Rocking Head Washer - M10 Galv	0.02kg

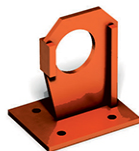
Superslim Prop Support Plate



Code	Description	Weight
SSX10041	Superslim Prop Support Plate	6.3kg
BNX20027	M20x45 Set Pin gr8.8 BZP Csk	0.2kg
BNU20001	M20 Hex Nut gr8	0.06kg

Corner Pivot

AWL = 65kN / Pivot



Code	Description	Weight
SSU10019	Superslim Corner Pivot	7.3kg

Prop Spade End Link & Prop Pivot Tube

Connects a heavy duty push-pull prop to the porthole of another soldier - AWL = 65 kN



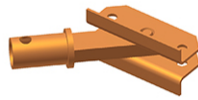
Code	Description	Weight
SSU10012	Spade End Link - Prop	3.1kg
SSU10004	Superslim Prop Pivot Tube	1.8kg

Superslim The definitive formwork primary beam

Components

100Kn Prop Connector

AWL = 100kN



Code	Description	Weight
SSU10038	Superslim Prop Connector 100kN	6.8kg

Prop Tube End Links

Connects heavy duty push-pull props to Megashor - AWL = 100kN



Code	Description	Weight
SSU10013	Superslim Prop Tube End Link	2.9kg
SSX10051	Superslim Short Prop Tube End Link	1.8kg

Prop Jacks LH and RH

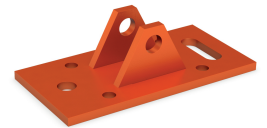
Converts soldiers into heavy duty push-pull props - Adj Range = 405-635mm / AWL = 100 kN



Code	Description	Weight
SSU10007	Superslim Prop Jack (LH)	14.5kg
SSU10008	Superslim Prop Jack (RH)	14.5kg

Tilt Plate

Connects heavy duty push-pull props to a surface - AWL = 100 kN



Code	Description	Weight
SSU10034	Superslim Tilt Plate	4.8kg
BNU24001	Nut - Hexagon M24	0.06kg
BNX24002	M24x110 Bolt gr.8.8 BZP	0.5kg

Universal Soldier Jack

Used in horizontal & vertical plumbing & levelling applications. Range 115mm closed to 400mm fully open.



Code	Description	Weight
SSX90043	Superslim Universal Soldier Jack	5.6kg

Corner Angles



Code	Description	Weight
SSU10003	Superslim 90 Degree Corner	8.7kg
SSU10005	Superslim 45 Degree Corner	8.0kg

Superslim The definitive formwork primary beam

Components

Pivot Cleat Set

Range = 55 degrees min, 220 degrees max



Code	Description	Weight
SSU10028	Superslim Pivot Cleat set	8.8kg

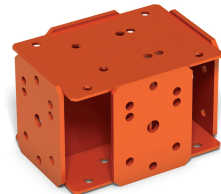
Pivot Corner



Code	Description	Weight
SSX10037	Superslim Pivot Corner 20mm	4.1kg

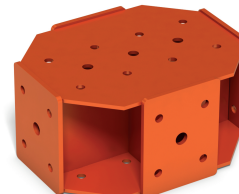
6-Way connector

A node to connect six soldiers at right-angles



Code	Description	Weight
SSU20006	6-Way connector	25.0kg

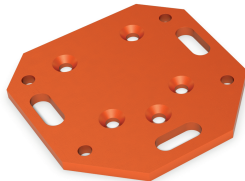
6-Way Double Connector



Code	Description	Weight
SSU20066	6 Way Double Connector	37.7kg

Anchor Plate

Secures the end of a soldier to a floor or wall - AWL: = 70 kN Tension / 90 kN Shear



Code	Description	Weight
SSU10036	Anchor Plate	7.40kg

Safety Latch



Code	Description	Weight
SSX10048	Superslim Safety Latch	1.6kg

Superslim The definitive formwork primary beam

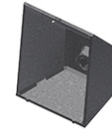
Components

Klik Klak Latch



Code	Description	Weight
SSU10037	Superslim Klik Klak Latch	3.9kg

Klik Klak Wall Pocket



Code	Description	Weight
SSU10044	Klik-Klak Wall Pocket	1.7kg
BNU20016	M20x130 Bolt gr8.8 BZP	0.4kg
BNU20003	M20 Round Washer BZP	0.03kg

Spreader Beam Adaptor

Used to attach and spread chains in lifting applications - AWL = 45kN per unit. AWL of Spreader Beam = 90kN (see technical data sheets)



Code	Description	Weight
SSX10052	Spreader Beam Adaptor Assembly	9.4kg

Fixed Strut & Adaptor



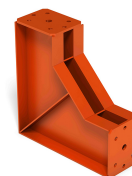
Code	Description	Weight
SSM00007	Fixed Strut Adaptor	16.0kg
SSM00008	Fixed Strut 2896mm	39.0kg

Single Sided Beam



Code	Description	Weight
SSM10540	Single Sided Beam 540mm	16.0kg

Single Sided Corner



Code	Description	Weight
SSM00001	Single Sided Corner 540 x 540mm	30.0kg

Superslim The definitive formwork primary beam

Components

Bolts, Nuts and Pins



Code	Description	Weight
BNU16007	M16x40 Set Pin gr8.8 BZP	0.09kg
BNU16013	M16x110 Bolt gr8.8 BZP	0.2kg
BNU16008	M16x40 Set Pin gr8.8 BZP Csk	0.05kg
BNU16001	M16 Nut gr8.8 BZP	0.03kg
BNU20001	M20 Nut gr8	0.06kg
BNU24001	M24 Nut gr8	0.08kg
BNX20030	M20x90 gr8.8 BZP	0.28kg
BNX24001	M24x45 Set Pin gr8.8 BZP	0.26kg
BNX24002	M24x110 Bolt gr8.8 BZP	0.48kg
SSX10046	Superslim 19mm Pin and R Clip	0.29kg