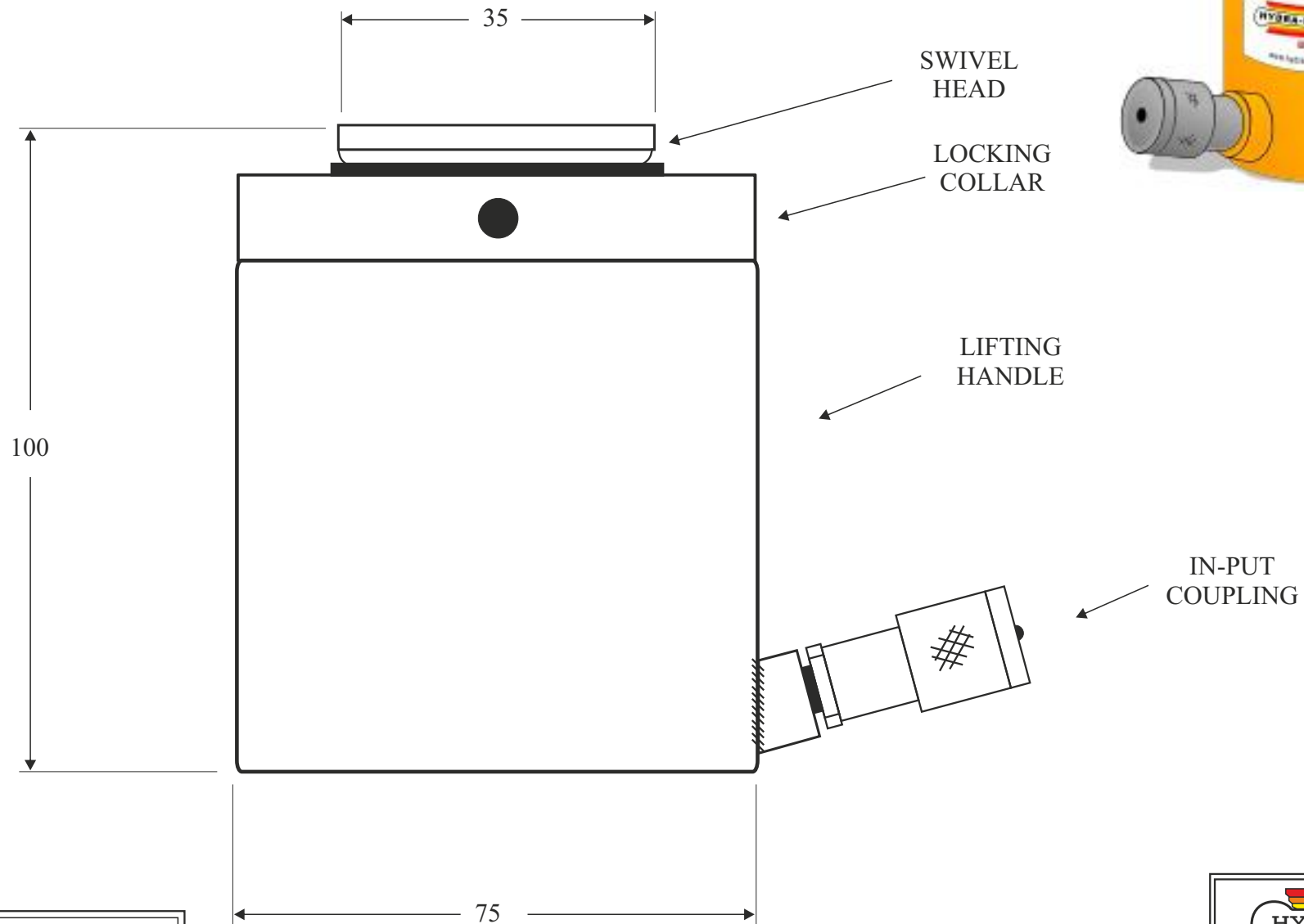



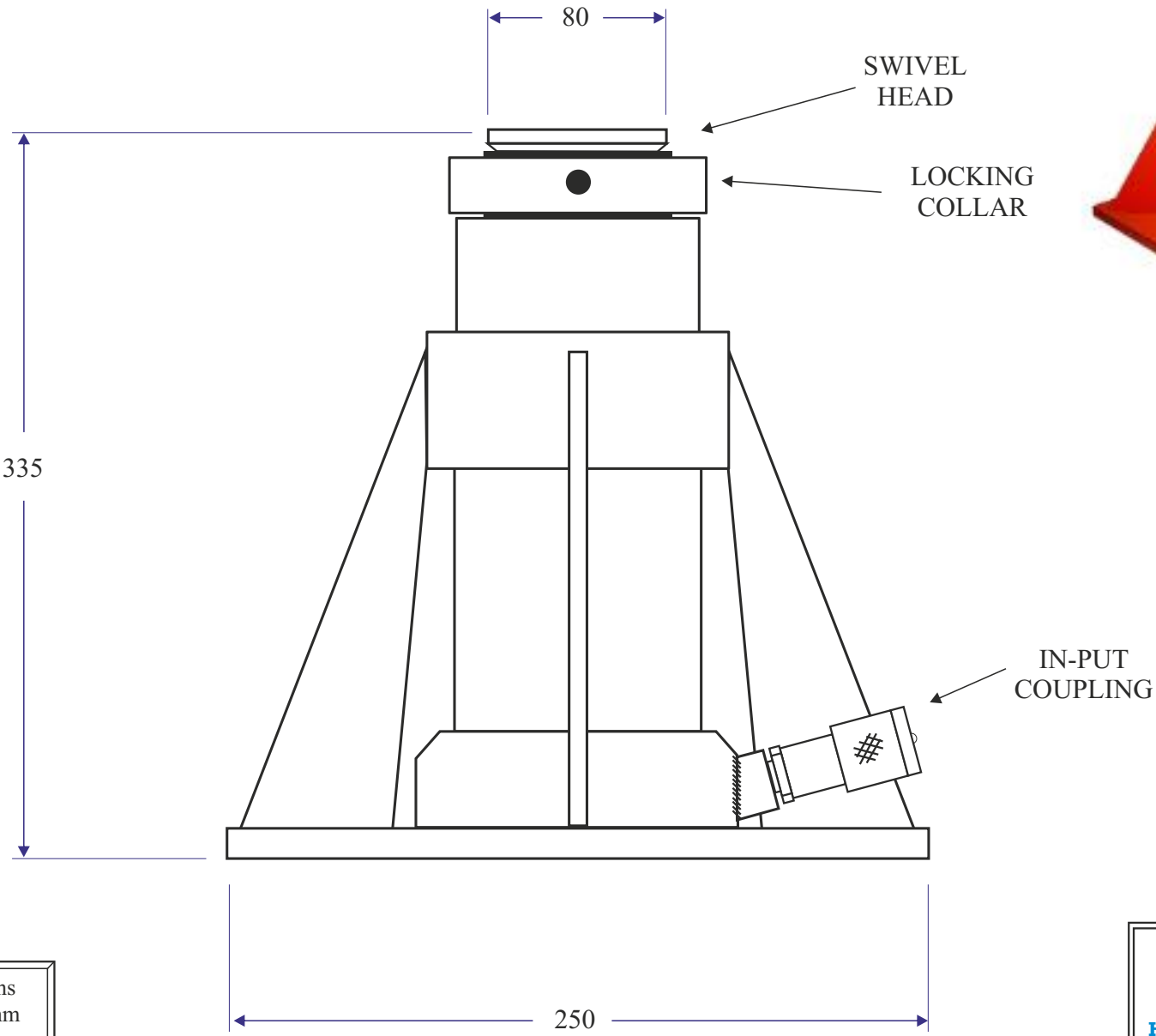
HJ30-50 Hydra-Jack



Maximum Capacity:	100 Kns
Maximum Stroke:	40 mm
Maximum Pressure:	700 Bar
Fluid Requirement:	0.13 Lts
Jack Weight :	3.04 Kgs

 HYDRA - CAPSULE HEAVY DUTY JACKING SYSTEMS	
DESCRIPTION:	HJ10-40 Hydra-Jack
DRAWING No.	CorelDraw-HJ10-40.cdr

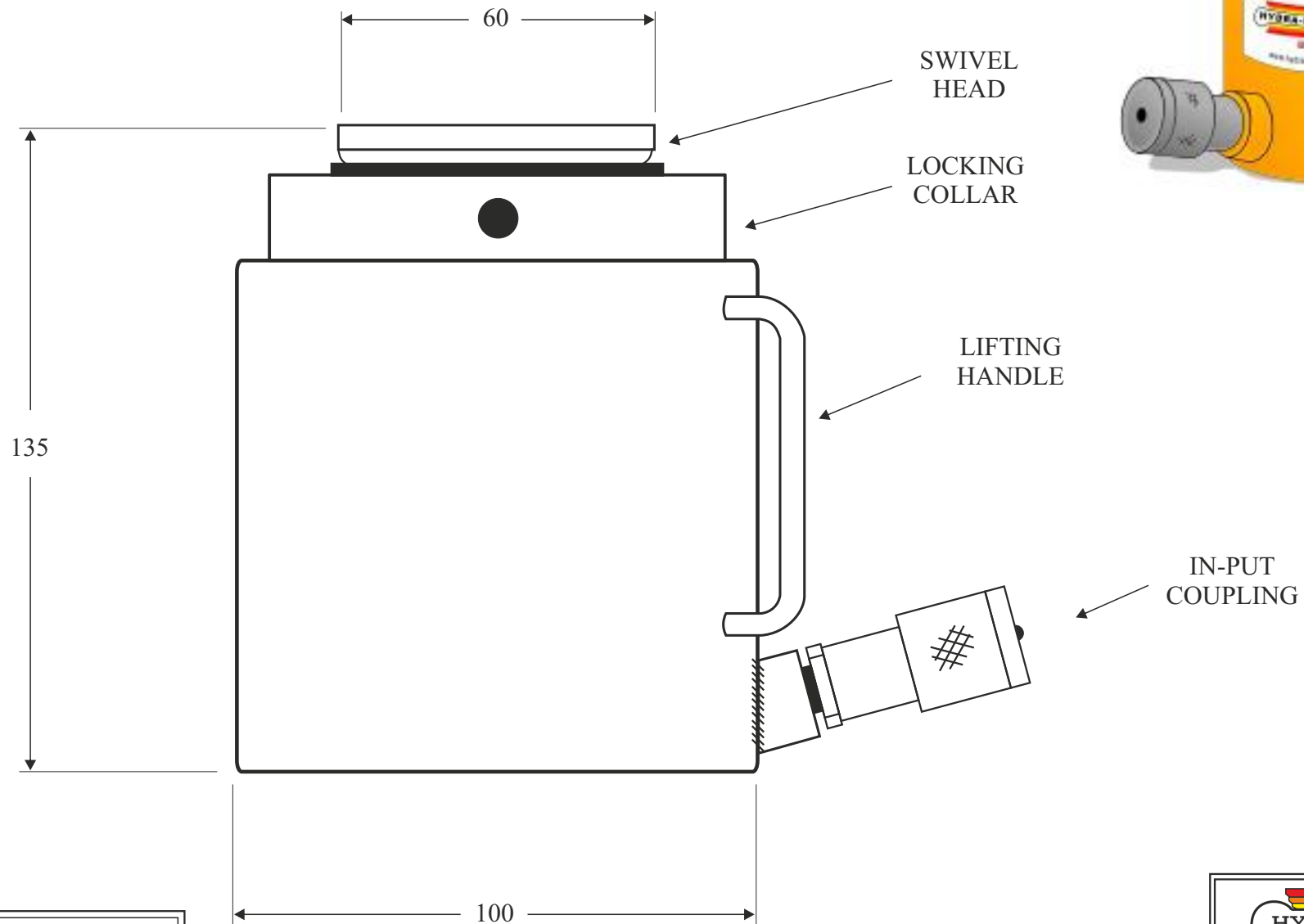
HJ25-150 Hydra-Jack




Maximum Capacity:	250 Kns
Maximum Stroke:	150 mm
Maximum Pressure:	690 Bar
Fluid Requirement:	0.73 Lts
Jack Weight :	26 Kgs

HYDRA - CAPSULE	
HEAVY DUTY JACKING SYSTEMS	
DESCRIPTION:	HJ25-150 Hydra-Jack
DRAWING No.	CorelDraw-HJ25-150.cdr

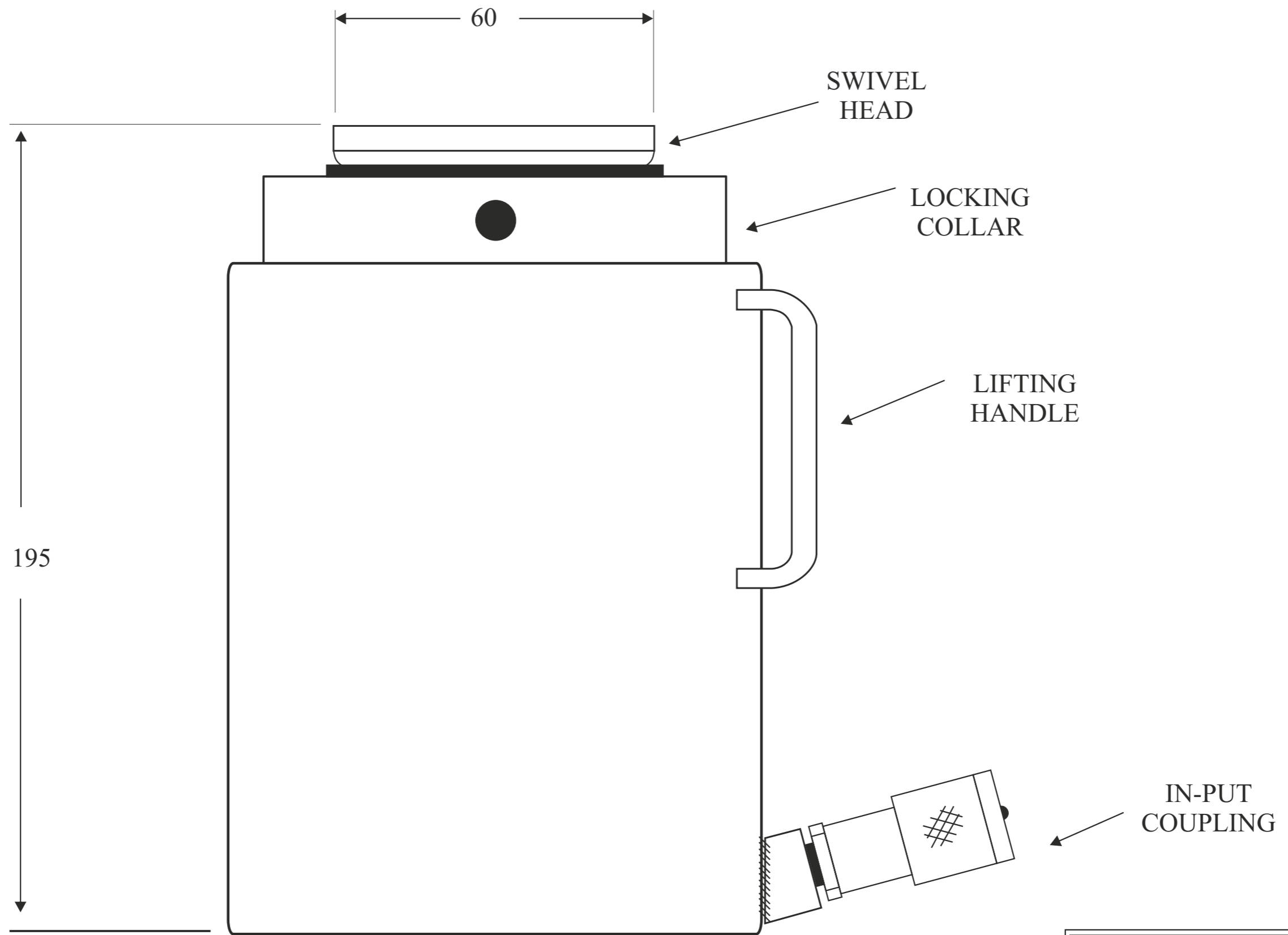
HJ30-50 Hydra-Jack



Maximum Capacity:	300 Kns
Maximum Stroke:	50 mm
Maximum Pressure:	700 Bar
Fluid Requirement:	0.26 Lts
Jack Weight :	14.6 Kgs

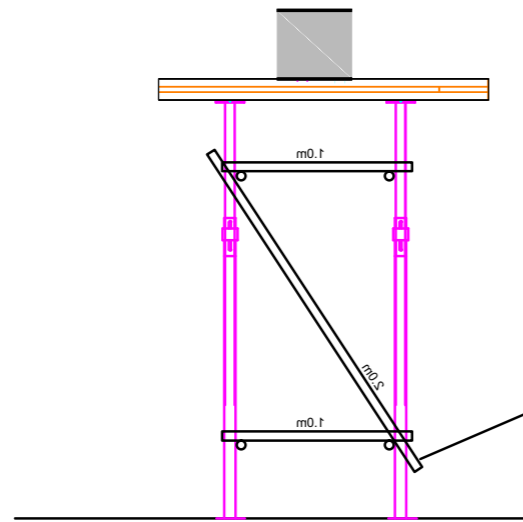
 HYDRA - CAPSULE HEAVY DUTY JACKING SYSTEMS	
DESCRIPTION:	HJ30-50 Hydra-Jack
DRAWING No.	CorelDraw-HJ30-50.cdr

HJ30-100 Hydra-Jack

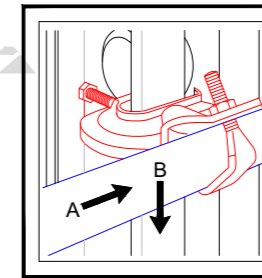
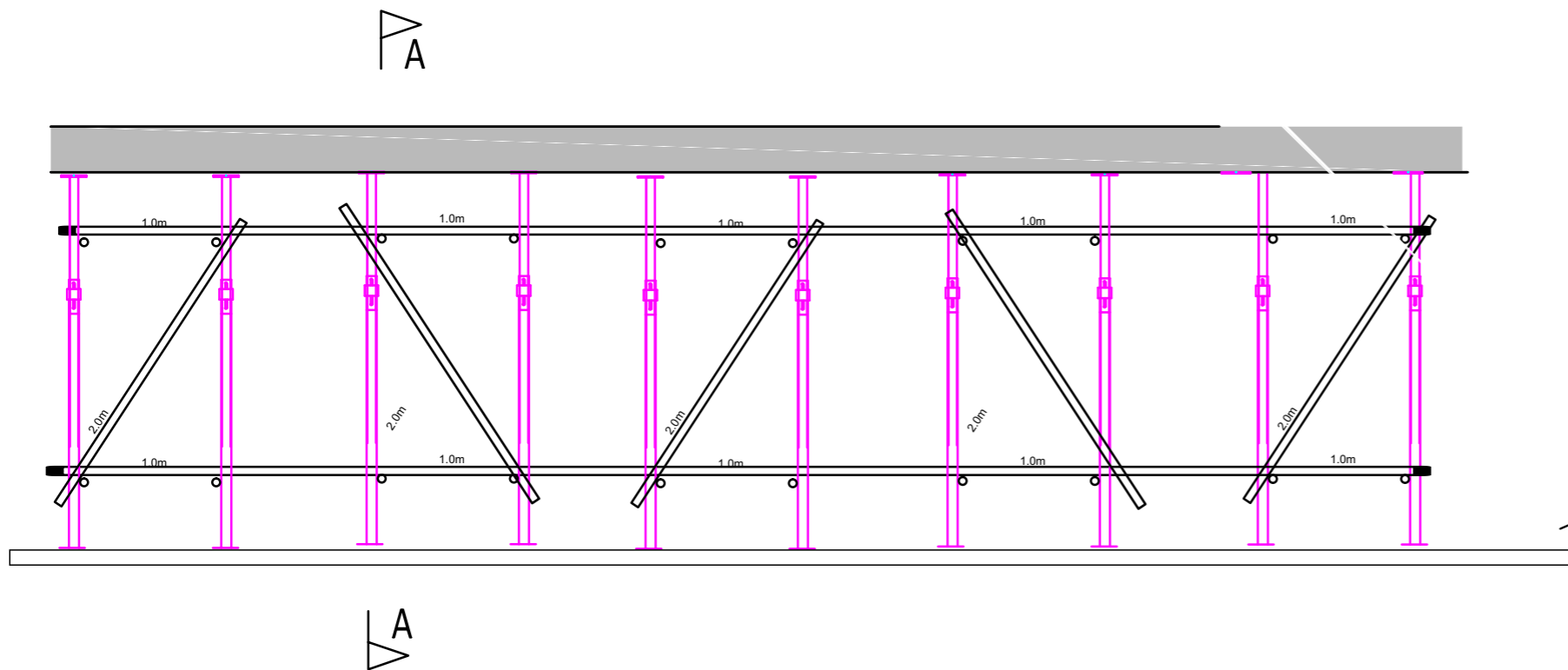


Maximum Capacity:	300 Kns
Maximum Stroke:	100 mm
Maximum Pressure:	700 Bar
Fluid Requirement:	0.55 Lts
Jack Weight :	33.5 Kgs

HYDRA - CAPSULE	
HEAVY DUTY JACKING SYSTEMS	
DESCRIPTION:	HJ30-100 Hydra-Jack
DRAWING No.	CorelDraw-H30-100.cdr



Section A-A



Connection of Scaffold Tube Lacing to Superslim Soldiers

'A' Allowable Working Load=6.25kN in Slip
'B' Allowable Working Load=4.00kN in Slip

Allow 1 No. Tube Clamp per Intersection

Note: Clamp is a swivel fitting

QTY	CODE	DESCRIPTION	Wt.(kg)
1	SSU10024	Slimshor Tube Clamp	1.30

GENERAL NOTES:

This drawing has been prepared from information supplied to us by our Client / the Contractor and where necessary through direct site measurement by All information within this drawing is subject to checking by our Client and the Contractor to ensure the requirements have been correctly interpreted. The Client / Contractor must verify themselves that all dimensions, settings and component selection, size, class, fit, height, loadings, reactions, erection, striking, sequencing, access & egress etc., are as required and practicable.

Details and approach shown within this design are only relevant to this specific Project. Any change in details or approach shown within this design to other applications, or under new site conditions, can affect you and other personnel at serious risk.

- No alterations shall be made to the design without the approval.
- Responsibility for and inspection and Certification of the erected equipment shall be that of the Erector.
- The arrangement of equipment shown on this drawing applies only to this specific application.
- Read this drawing in conjunction with the quotation and the Terms and Conditions of Trading.

EXISTING STRUCTURE & FOUNDATIONS:

Our Client / the Contractor / Structural Engineer to ensure that the existing structure, its fabric and the ground will safely support the imposed loads unless otherwise stated.

No assessment of the ground conditions have been made in this design and it remains the responsibility of our Client, the Contractor or Structural Engineer to undertake this work and confirm suitability or state an allowable bearing pressure can work to unless otherwise identified.

No assessment has been made of the existing structure to determine whether it can safely support the indicated imposed loads as this is beyond our knowledge and remains the responsibility of our Client, the Contractor or Structural Engineer unless otherwise identified.

Our Client or the Contractor must secure all foundations and existing works to be affected as indicated in this drawing prior to erection. No exceptions are to occur in the vicinity of the erected structure without prior consent.

MATERIALS:

All quantities shown to be in accordance with BS EN 10, BS EN 14, BS EN 12811 and erected in accordance with TD2020. Proprietary equipment to be installed and used in accordance with manufacturer's recommendations.

ALTERATIONS & CHANGES:

No alterations or change of use without prior written confirmation.

Client to inform immediately of any inaccuracies within this design, changes to site conditions or changes to scope.

The Client / Contractor must verify all the dimensions and notify of any discrepancies prior to erection.

PERMITS AND PERMISSIONS:

The Client / Contractor must obtain all permits and permissions prior to erection.

CONSTRUCTION NOTES

- Drawings are not to be scaled.
- All fits to be selected, tested and finished to accordance with TD2111. All fits are to be secured with full bearing pressure and across both standards at node positions unless specifically shown otherwise.
- It is the responsibility of the Contractor to provide adequate flag positions at the frequency required by this design.
- All fitting good by Contractor.
- All bolted connections to be torqued to 140Nm.

RESIDUAL RISK NOTES:

It is not the job of the Designer to prepare specific Design Risk Assessments as design risks are identified within this drawing. Where risks cannot be identified and inherently exist within the scheme they are identified on the Risk Register and will be identified with a warning triangle:

⚠ IF IN DOUBT ASK ⚠

- ⚠ ALL DIMENSIONS TO BE CONFIRMED ON SITE AND ANY DISCREPANCIES TO BE ADVISED TO THE DESIGNER
- ⚠ CUSTOMER TO REVIEW EQUIPMENT AND ENSURE IT IS SUITABLE FOR PURPOSE INCLUDING ACCESS AND EGRESS
- ⚠ CUSTOMER TO REVIEW SCHEME AND ENSURE PROPPING DOES NOT INTERFERE WITH PROPOSED WORKS OR SEQUENCING
- ⚠ CUSTOMER TO REVIEW SEQUENCE TO ENSURE PROPS ARE NOT DAMAGED OR DISTURBED AND ARE RETRIEVABLE
- ⚠ PROPS ARE NOT TO BE ADJUSTED, ALTERED OR REMOVED WITHOUT WRITTEN CONSENT
- ⚠ ALL SERVICES IN VICINITY OF PENETRATIONS TO BE REMOVED OR ISOLATED PRIOR TO ANY WORKS BEING UNDERTAKEN
- ⚠ LOCALISED CRACKING DURING STRUCTURAL ADAPTIONS CAN OCCUR - FOLLOW THE CONSTRUCTION SEQUENCE HEREIN TO MINIMISE RISK

REV	DATE	DESCRIPTION	DRN	CHK

For Approval
 For Approval
 For Approval

CLIENT:

PROJECT:

Brooks University, Oxford

DRG TITLE:

Temporary propping During Demolition Works

DRG NO:

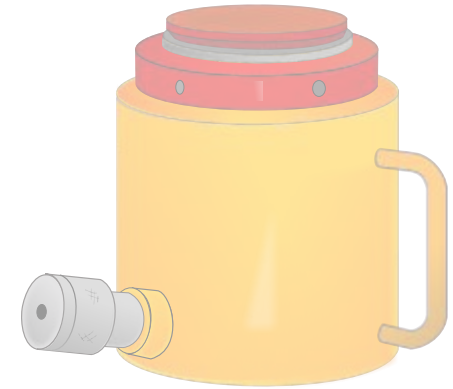
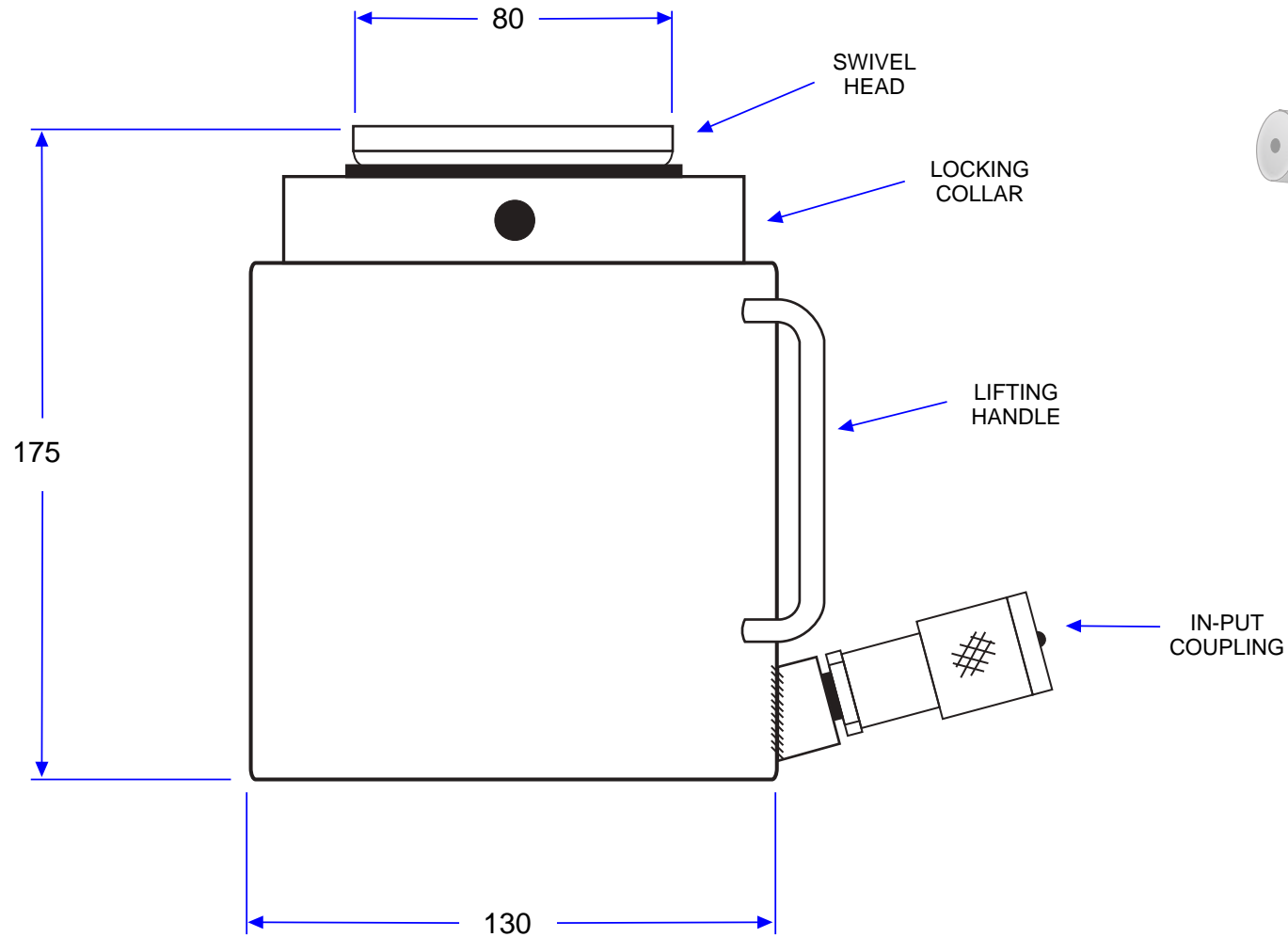
34026-02

REV: PO SCALE: As Shown @ A1

DRN: / DATE: /

CHK: / DATE: /

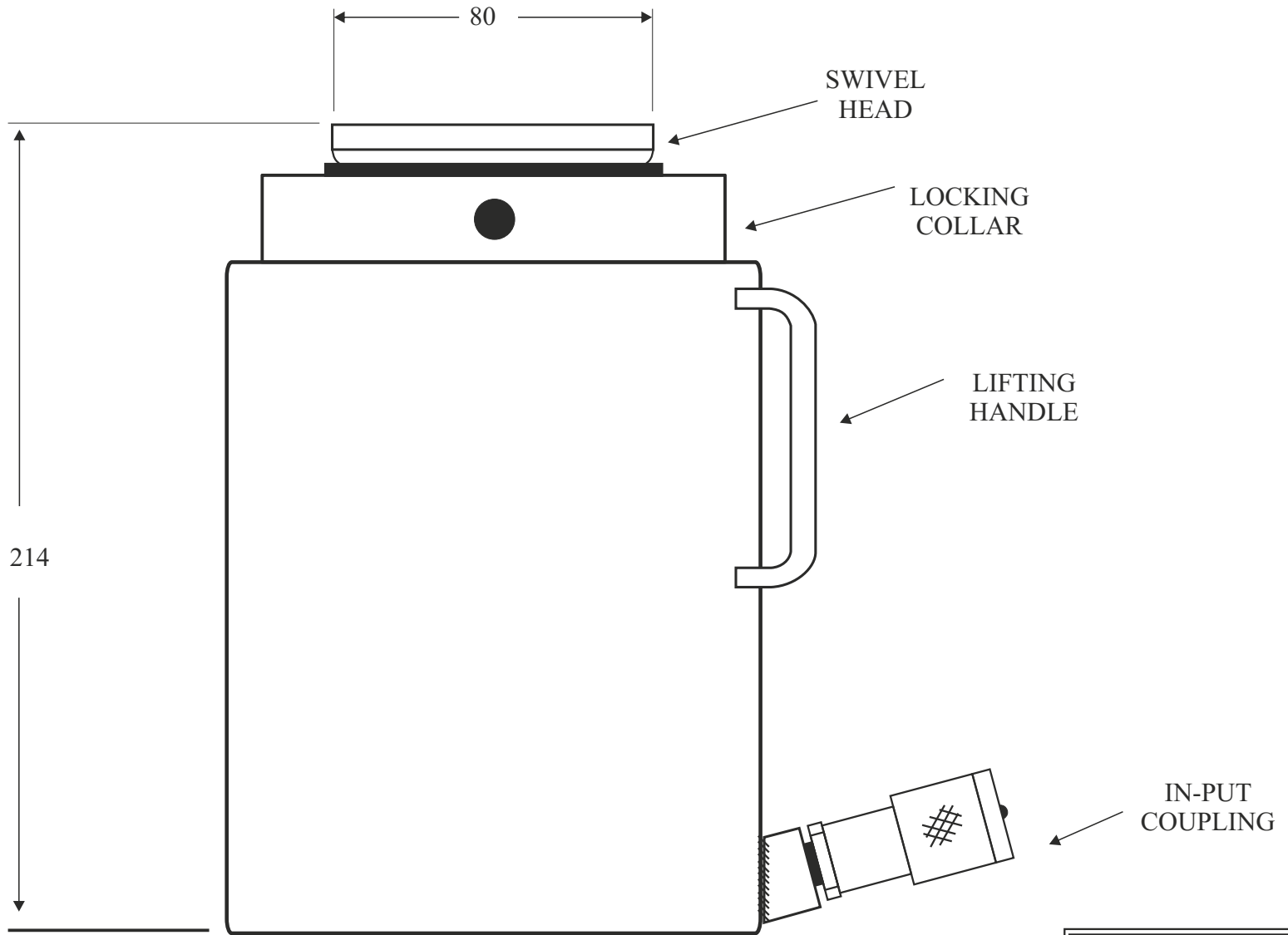
HJ50-50 Hydra-Jack



Maximum Capacity	50 tons
Maximum Stroke	50mm
Maximum Pressure	640 bar
Fluid Requirement	0.46 Lts
Jack Weight	14.6 Kgs

HYDRA-CAPSULE	
HEAVY DUTY JACKING SYSTEMS	
DESCRIPTION:	HJ50-50 Hydra-Jack
DRAWING No.	Xara/HJ50-50/2007-A

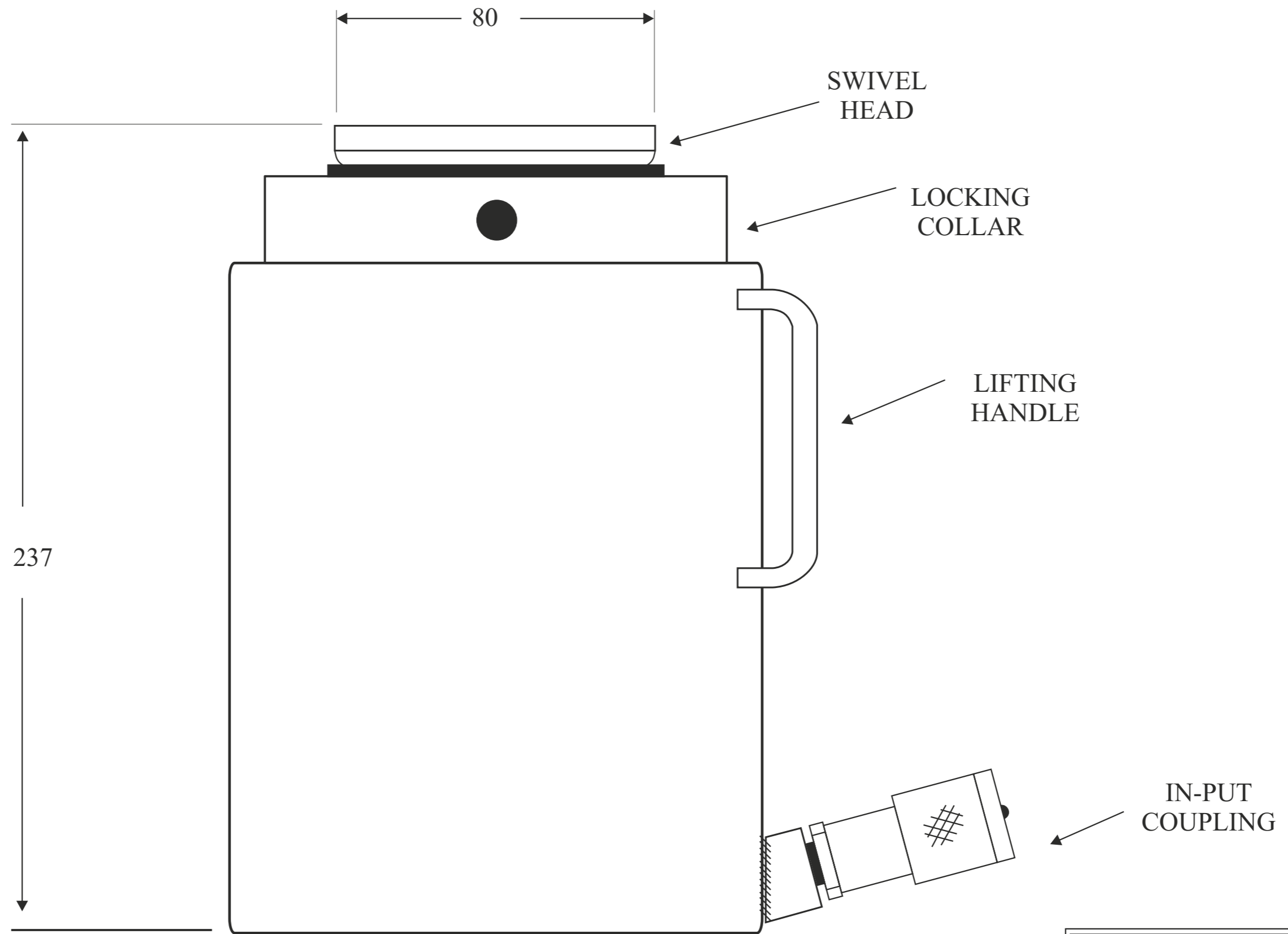
LN50-100 Hydra-Jack



Maximum Capacity:	500 Kns
Maximum Stroke:	100 mm
Maximum Pressure:	700 Bar
Fluid Requirement:	0.73 Lts
Jack Weight :	21.5 Kgs

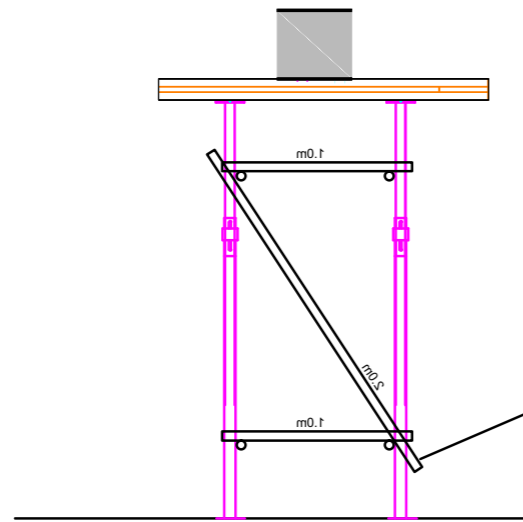
HYDRA - CAPSULE	
HEAVY DUTY JACKING SYSTEMS	
DESCRIPTION:	LN50-100 Hydra-Jack
DRAWING No.	CorelDraw-LN50-100.cdr

HJ50-100 Hydra-Jack

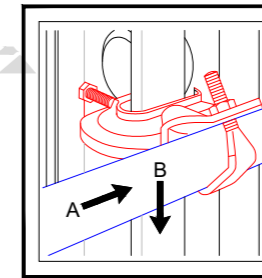
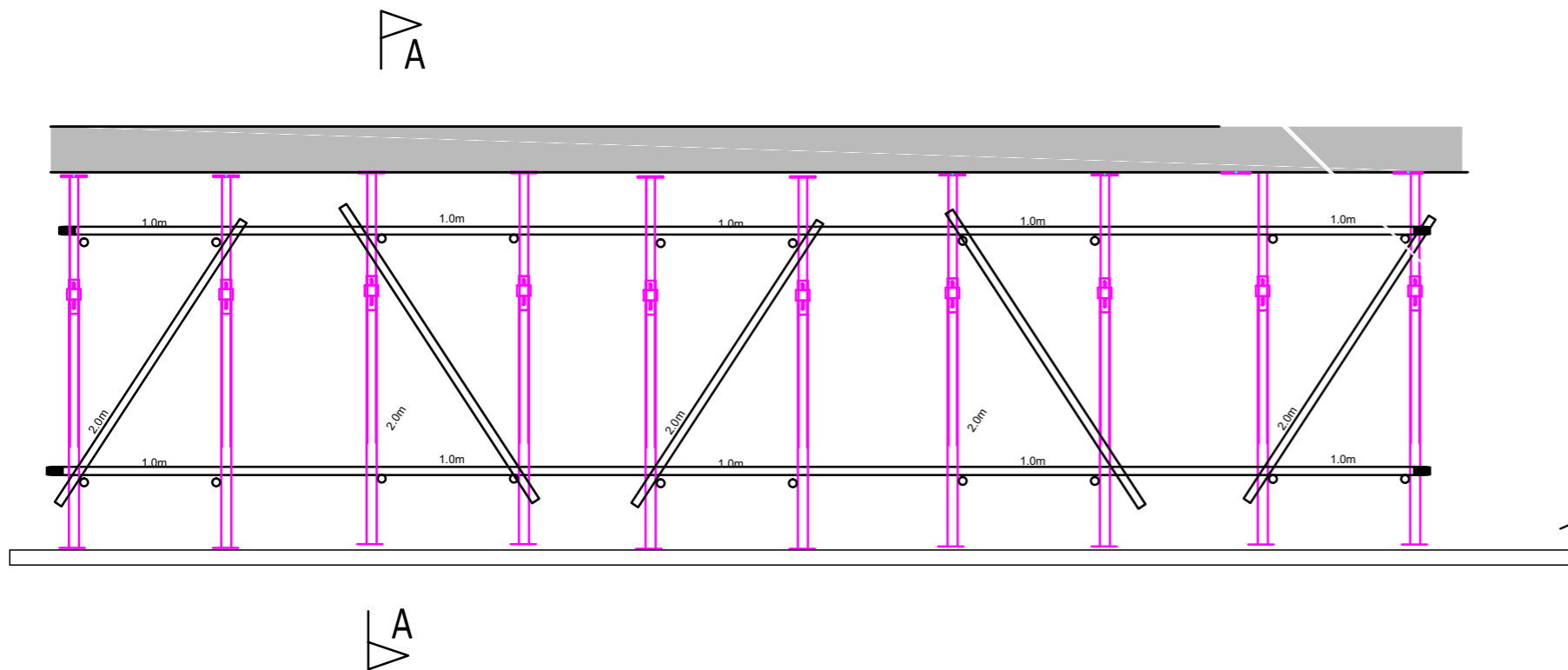


Maximum Capacity:	500 Kns
Maximum Stroke:	100 mm
Maximum Pressure:	700 Bar
Fluid Requirement:	0.78 Lts
Jack Weight :	23.5 Kgs

HYDRA - CAPSULE	
HEAVY DUTY JACKING SYSTEMS	
DESCRIPTION:	HJ50-100 Hydra-Jack
DRAWING No.	CorelDraw-Hj50-100.cdr



Section A-A



Connection of Scaffold Tube Lacing to Superslim Soldiers

'A' Allowable Working Load=6.25kN in Slip
'B' Allowable Working Load=4.00kN in Slip

Allow 1 No. Tube Clamp per Intersection

Note: Clamp is a swivel fitting

QTY	CODE	DESCRIPTION	Wt.(kg)
1	SSU10024	Slimshor Tube Clamp	1.30

GENERAL NOTES:

This drawing has been prepared from information supplied to us by our Client / the Contractor and where necessary through direct site measurement by All information within this drawing is subject to checking by our Client and the Contractor to ensure the requirements have been correctly interpreted. The Client / Contractor must verify themselves that all dimensions, settings and component selection, size, class, fit, height, loading, location, erection, setting, sequence, access & egress etc., are as required and practicable.

Details and approach shown within this design are only relevant to this specific Project. Any other details or approaches shown within this design to other applications, or under new details, can affect you and other personnel at various sites.

- No alterations shall be made to the design without the approval.
- Responsibility for and inspection and Certification of the erected equipment shall be that of the Erector.
- The arrangement of equipment shown on this drawing applies only to this specific application.
- Read this drawing in conjunction with the quotation and the Terms and Conditions of Trading.

EXISTING STRUCTURE & FOUNDATIONS:

Our Client / the Contractor / Structural Engineer to ensure that the existing structure, its fabric and the ground will safely support the imposed loads unless otherwise stated.

No assessment of the ground conditions have been made in this design and it remains the responsibility of our Client, the Contractor or Structural Engineer to undertake this exercise and confirm suitability or state an allowable bearing pressure can work to unless otherwise stated.

No assessment has been made of the existing structure to determine whether it can safely support the indicated imposed loads as this is beyond our knowledge and remains the responsibility of our Client, the Contractor or Structural Engineer unless otherwise stated.

Our Client or the Contractor must secure all foundations and existing works to be protected as indicated in this drawing prior to erection. No exceptions are to occur in the vicinity of the erected structure without prior consent.

MATERIALS:

All quantities shown to be in accordance with BS EN 10, BS EN 14, BS EN 12811 and erected in accordance with TD2020. Proprietary equipment to be installed and used in accordance with manufacturer's recommendations.

ALTERATIONS & CHANGES:

No alterations or change of use without prior written confirmation.

Client to inform immediately of any inaccuracies within this design, changes to site conditions or changes to scope.

The Client / Contractor must verify all the dimensions and notify of any discrepancies prior to erection.

PERMITS AND PERMISSIONS:

The Client / Contractor must obtain all permits and permissions prior to erection.

CONSTRUCTION NOTES

- Drawings are not to be scaled.
- All fits to be selected, tested and finished to accordance with TD211. All fits are to be secured with full bearing pressure and across both standards at node positions unless specifically shown otherwise.
- It is the responsibility of the Contractor to provide adequate flag positions at the frequency required by this design.
- All fitting good by Contractor.
- All bolted connections to be torqued to 140Nm.

RESIDUAL RISK NOTES:

It is not the job of the Designer to prepare specific Designer Risk Assessments as design risks are identified within this drawing. Where risks cannot be identified and inherently risks within the scheme they are identified on the Risk Register and will be identified with a warning triangle:

⚠ IF IN DOUBT ASK ⚠

- ⚠ ALL DIMENSIONS TO BE CONFIRMED ON SITE AND ANY DISCREPANCIES TO BE ADVISED TO THE DESIGNER
- ⚠ CUSTOMER TO REVIEW EQUIPMENT AND ENSURE IT IS SUITABLE FOR PURPOSE INCLUDING ACCESS AND EGRESS
- ⚠ CUSTOMER TO REVIEW SCHEME AND ENSURE PROPPING DOES NOT INTERFERE WITH PROPOSED WORKS OR SEQUENCING
- ⚠ CUSTOMER TO REVIEW SEQUENCE TO ENSURE PROPS ARE NOT DAMAGED OR DISTURBED AND ARE RETRIEVABLE
- ⚠ PROPS ARE NOT TO BE ADJUSTED, ALTERED OR REMOVED WITHOUT WRITTEN CONSENT
- ⚠ ALL SERVICES IN VICINITY OF PENETRATIONS TO BE REMOVED OR ISOLATED PRIOR TO ANY WORKS BEING UNDERTAKEN
- ⚠ LOCALISED CRACKING DURING STRUCTURAL ADAPTIONS CAN OCCUR - FOLLOW THE CONSTRUCTION SEQUENCE HEREIN TO MINIMISE RISK

REV	DATE	DESCRIPTION	DRN	CHK

For Approval
 For Approval
 For Approval

CLIENT

PROJECT

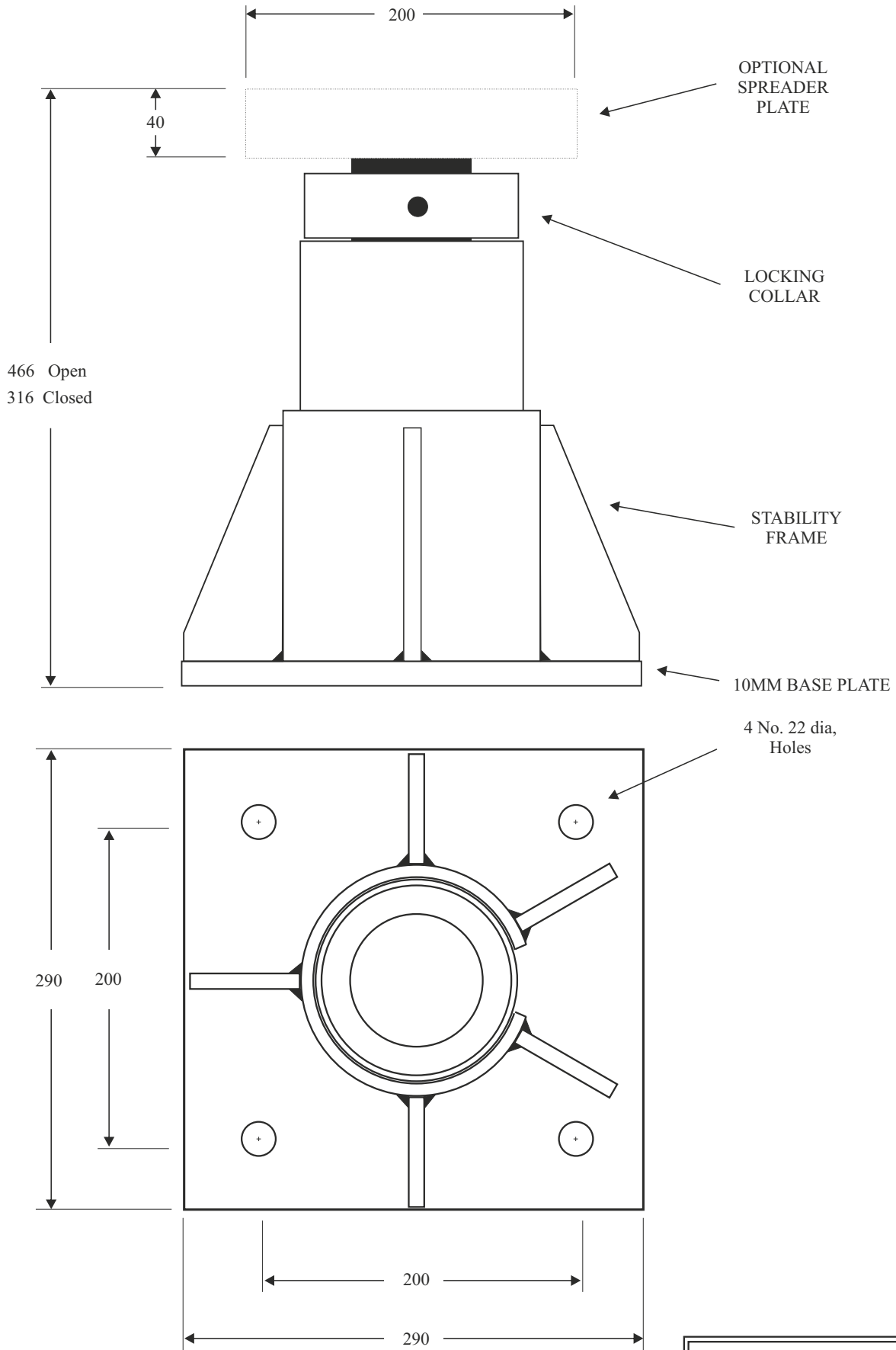
Brooks University, Oxford

DRG TITLE

Temporary propping During Demolition Works

DRG NO	REV	SCALE	DRN	DATE
34026-02	P0	As Shown @ A1	CHK	DATE

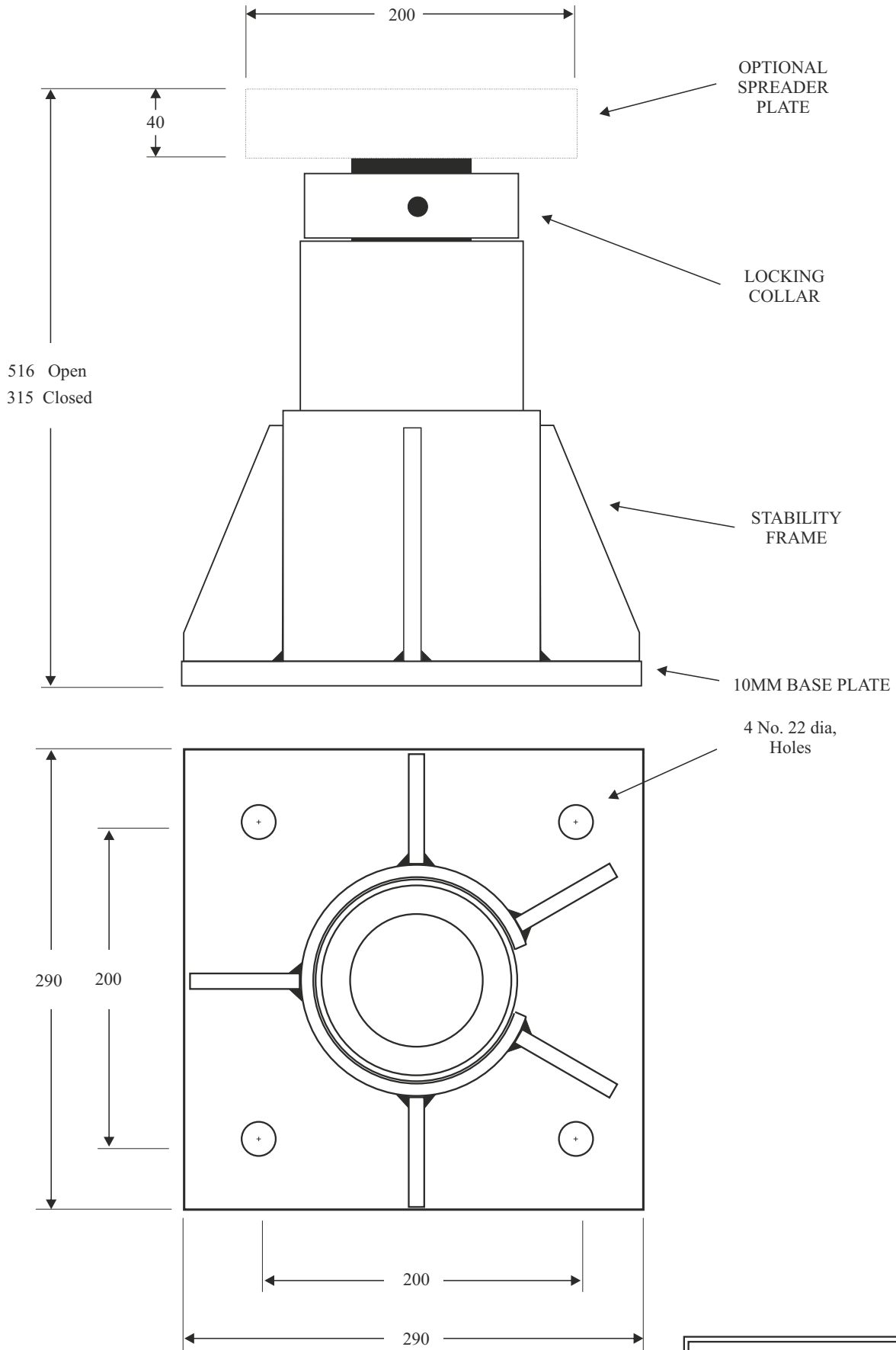
LN50-150 Long-Stroke Hydra-Jack




Maximum Capacity:	500 Kns
Maximum Stroke:	150 mm
Maximum Pressure:	700 Bar
Fluid Requirement:	1.10 Lts
Jack Weight :	31.1 Kgs

HYDRA - CAPSULE	
HEAVY DUTY JACKING SYSTEMS	
DESCRIPTION:	LN50-150 Hydra-Jack
DRAWING No.	CorelDrawLN506150.cdr

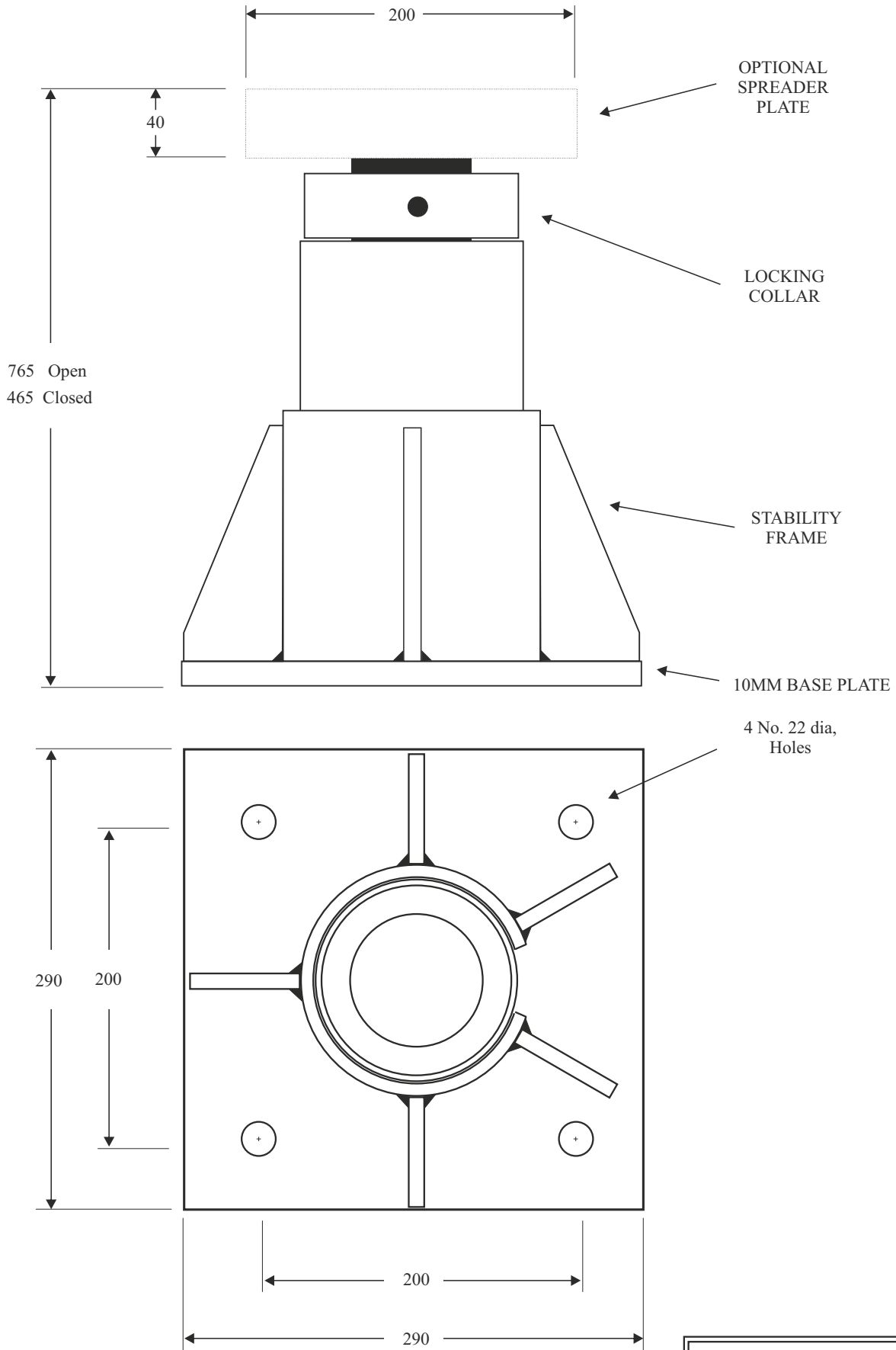
LN50-200 Long-Stroke Hydra-Jack



Maximum Capacity:	500 Kns
Maximum Stroke:	200 mm
Maximum Pressure:	700 Bar
Fluid Requirement:	1.44 Lts
Jack Weight :	36.3 Kgs

	
HEAVY DUTY JACKING SYSTEMS	
DESCRIPTION:	LN50-200 Hydra-Jack
DRAWING No.	CorelDrawLN50-200.cdr

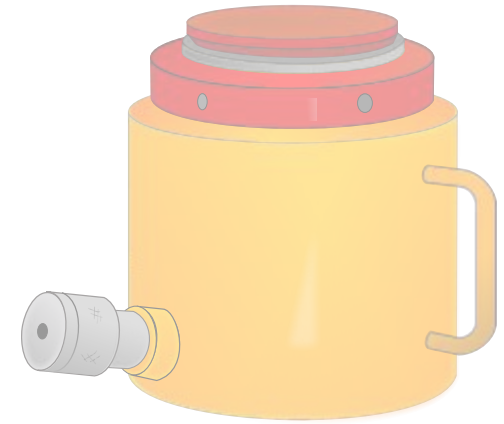
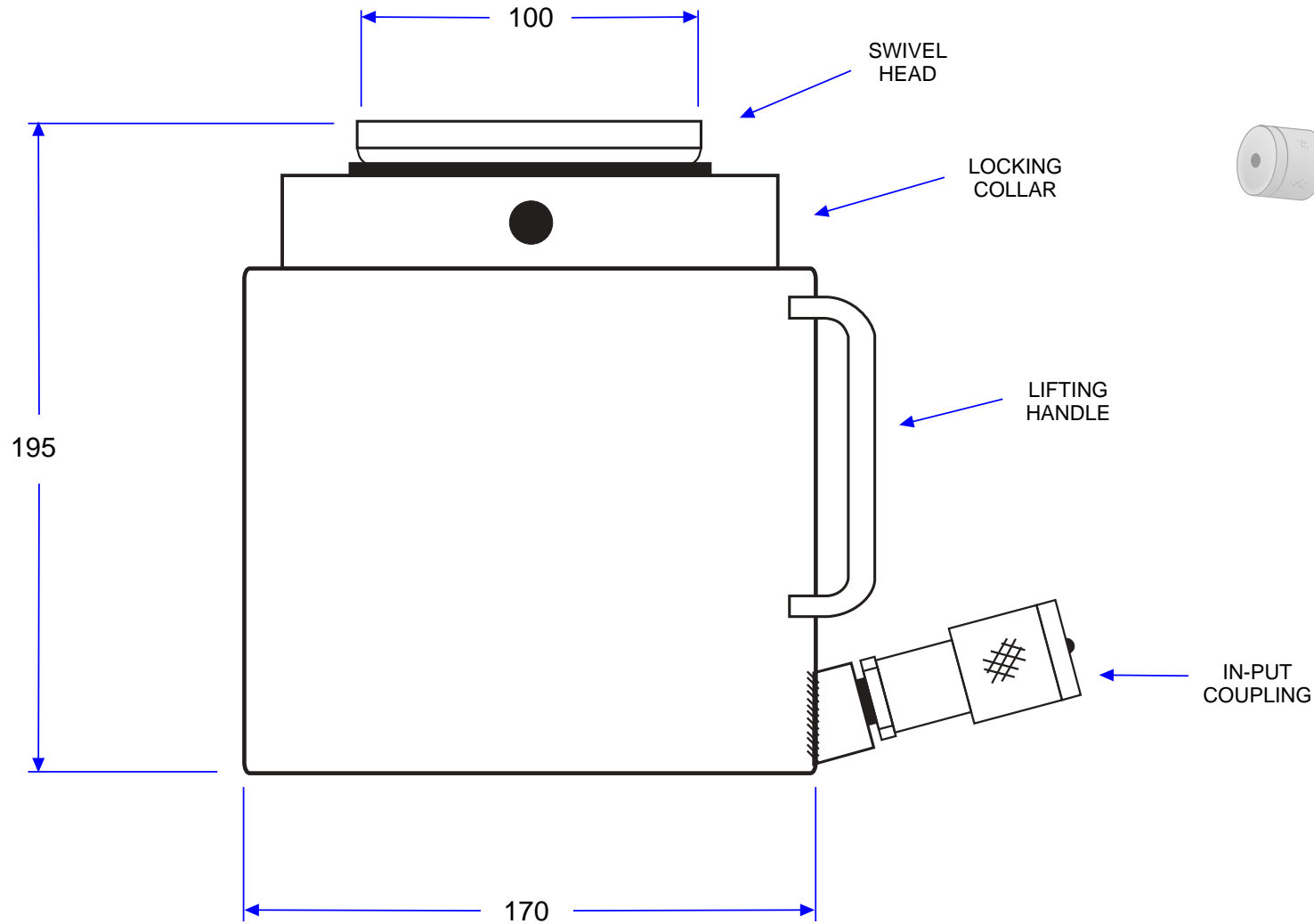
LN50-300 Long-Stroke Hydra-Jack



Maximum Capacity:	500 Kns
Maximum Stroke:	300 mm
Maximum Pressure:	700 Bar
Fluid Requirement:	2.14 Lts
Jack Weight :	46.2 Kgs

HEAVY DUTY JACKING SYSTEMS	
DESCRIPTION:	LN50-300 Hydra-Jack
DRAWING No.	CorelDrawLN50-300.cdr

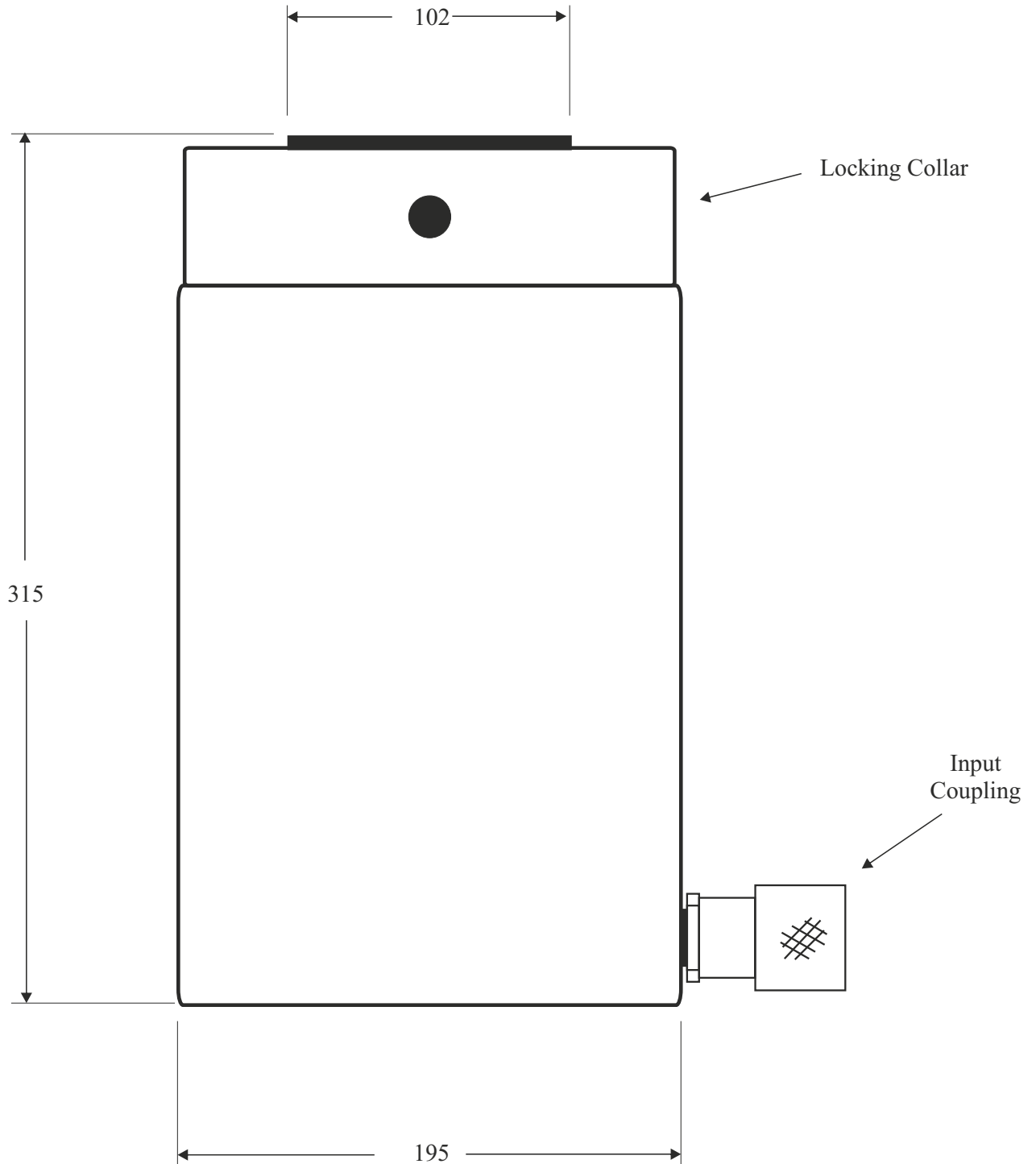
HJ90-55 Hydra-Jack



Maximum Capacity	90 tons
Maximum Stroke	55mm
Maximum Pressure	710 bar
Fluid Requirement	0.71 Lts
Jack Weight	28.2 Kgs

HYDRA-CAPSULE	
HEAVY DUTY JACKING SYSTEMS	
DESCRIPTION:	HJ90-55 Hydra-Jack
DRAWING No.	Xara/HJ90-55/2007-A

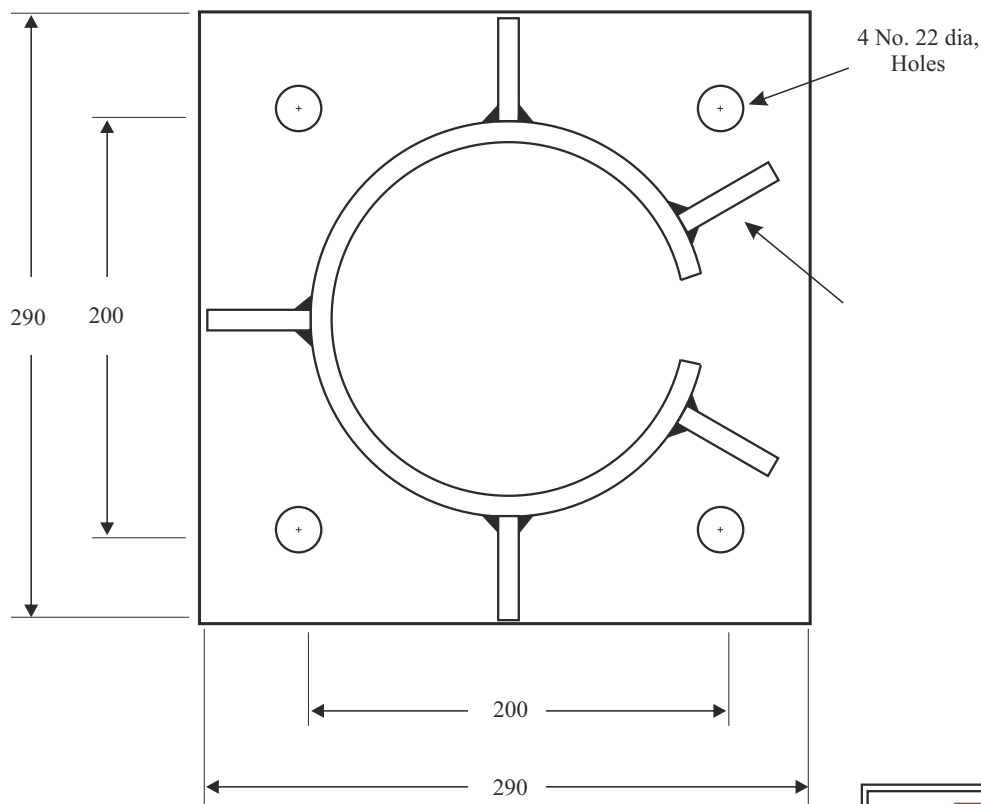
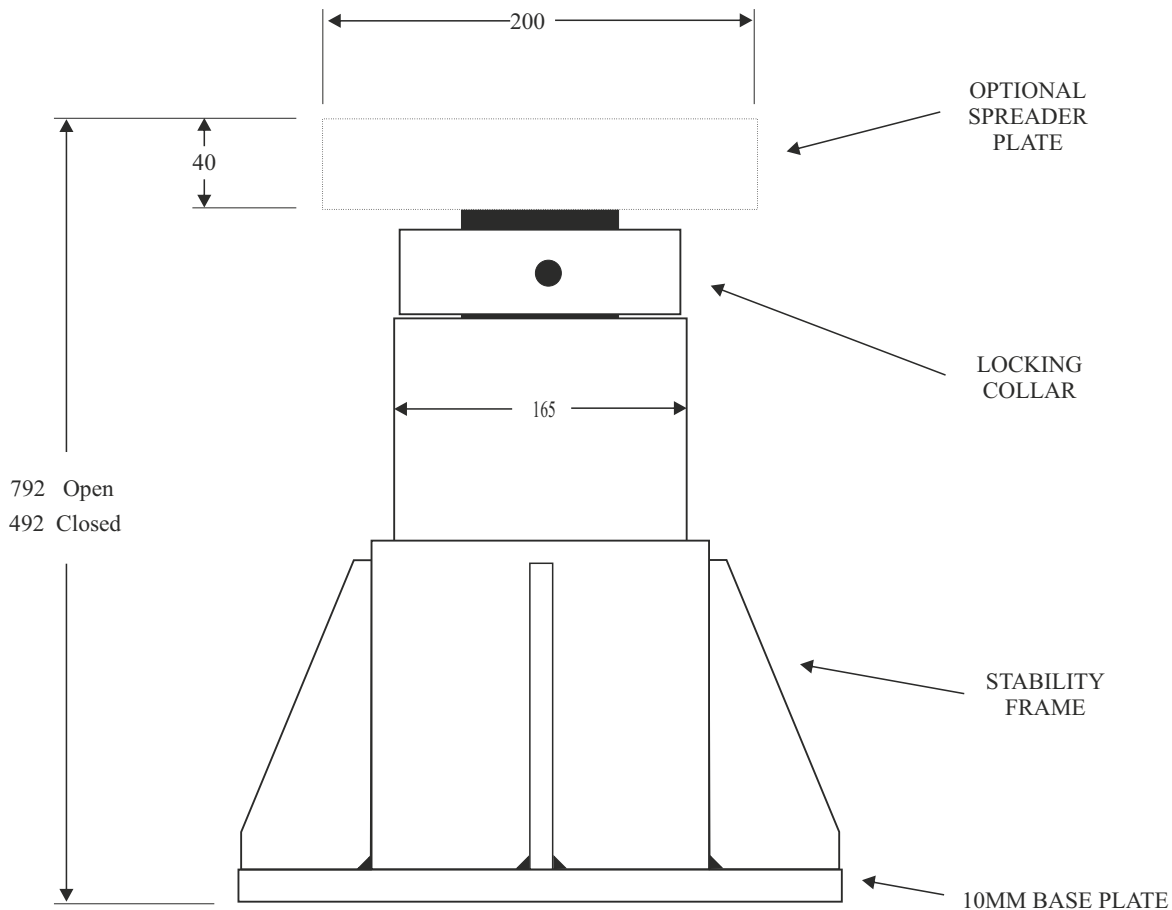
HJ100-150 Hydra-Jack



Maximum Capacity:	1045 kNs
Maximum Stroke:	150 mm
Maximum Pressure:	700 Bar
Fluid Requirement:	2.14 Lts
Jack Weight :	54.3 Kgs

HYDRA - CAPSULE	
HEAVY DUTY JACKING SYSTEMS	
DESCRIPTION:	HJ100-150 Hydra-Jack
DRAWING No.	CorelDrawHJ100-150.cdr

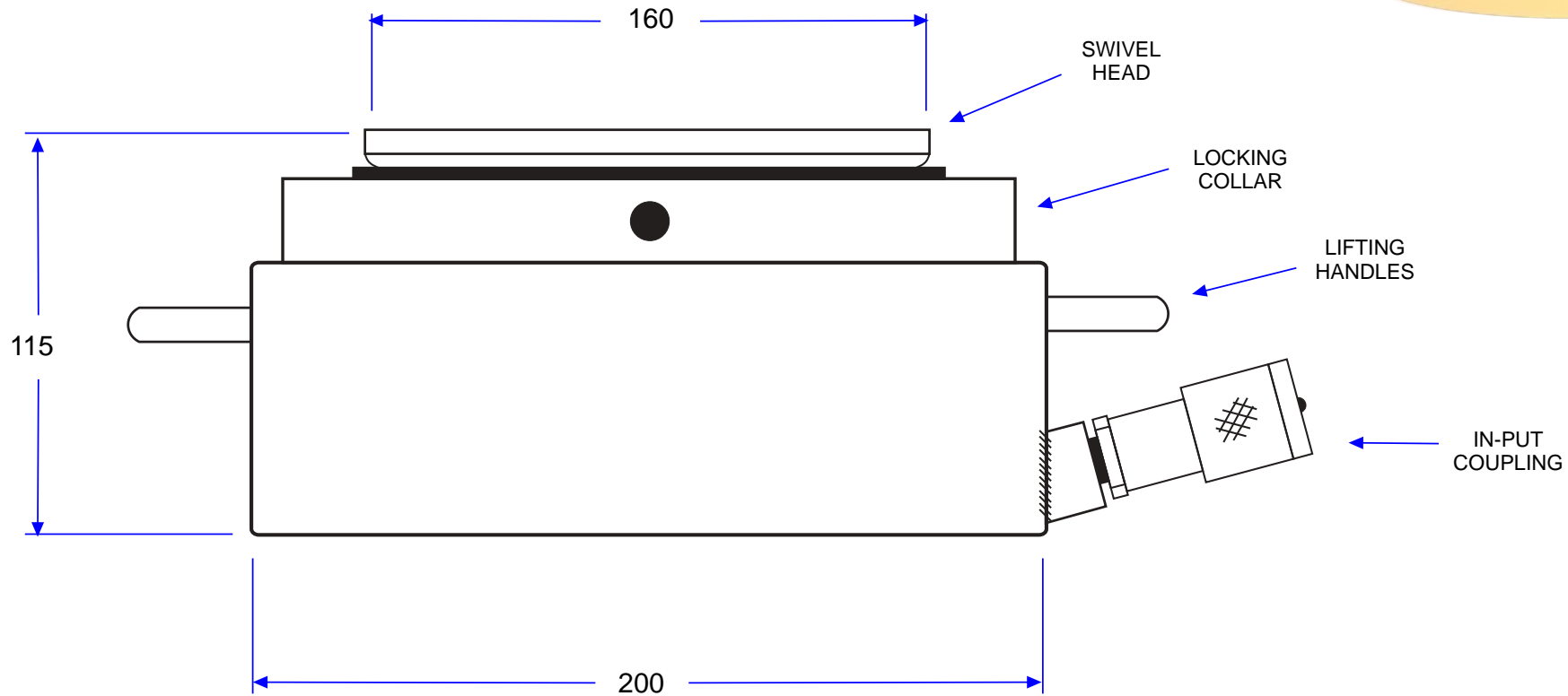
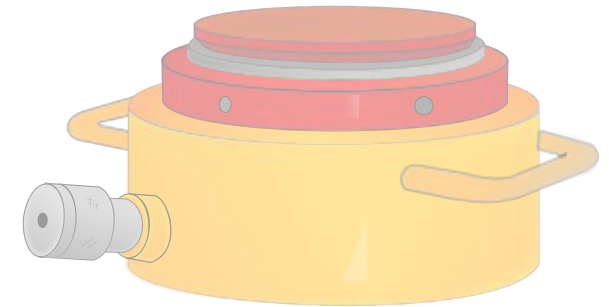
LN100-300 Long-Stroke Hydra-Jack



Maximum Capacity:	1000 Kns
Maximum Stroke:	300 mm
Maximum Pressure:	700 Bar
Fluid Requirement:	4.04 Lts
Jack Weight :	80.0 Kgs

HYDRA - CAPSULE	
HEAVY DUTY JACKING SYSTEMS	
DESCRIPTION:	LN100-300 Hydra-Jack
DRAWING No.	CorelDrawLN100-300.cdr

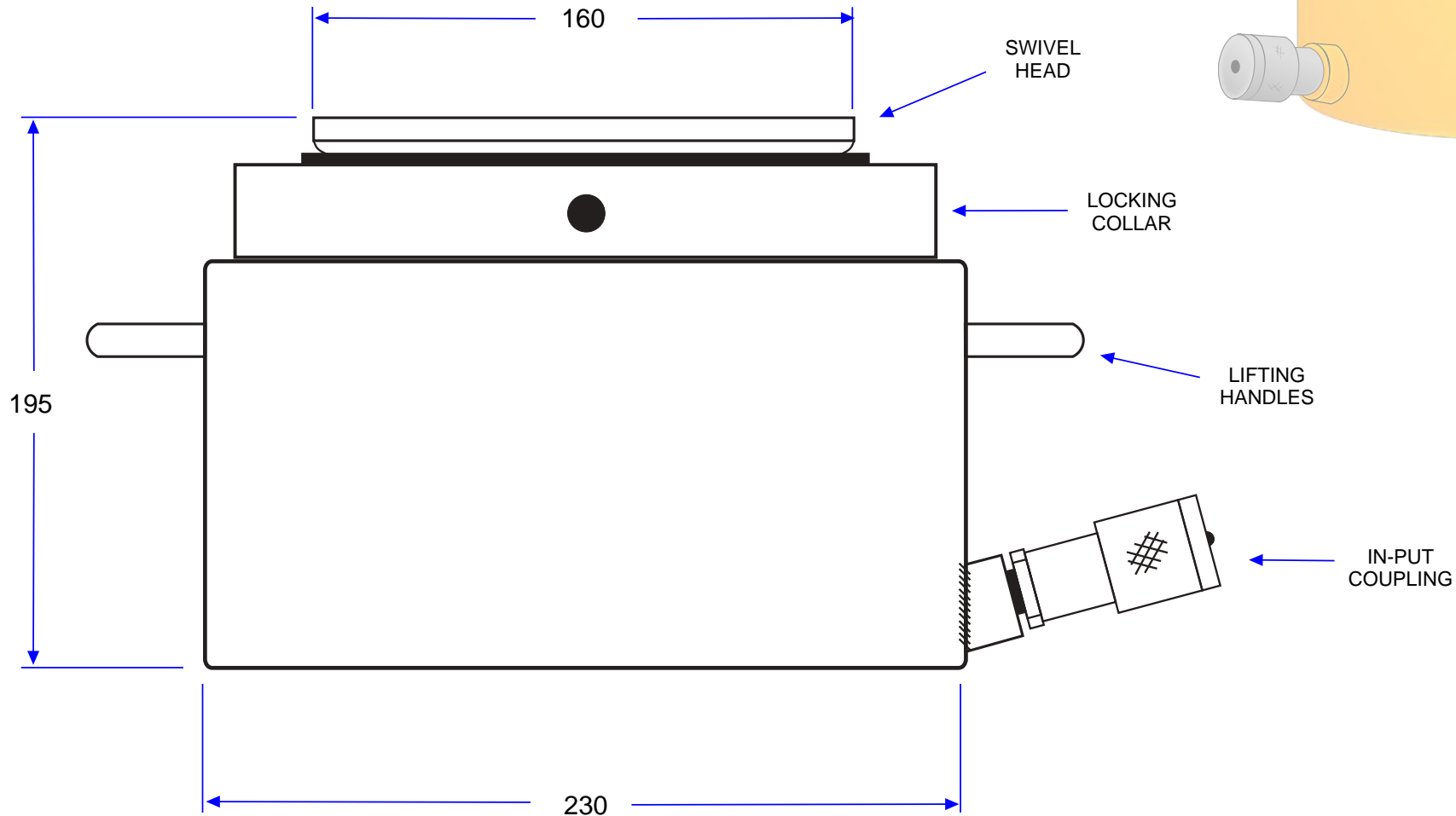
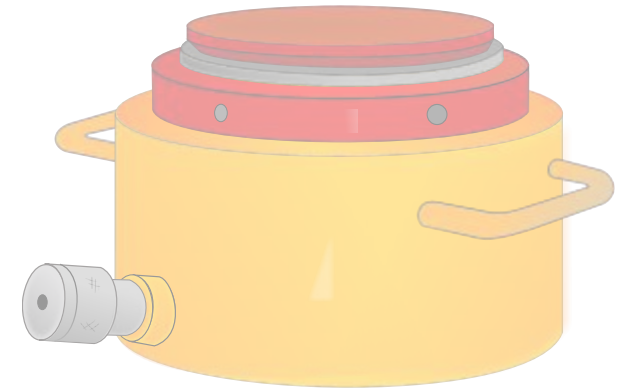
HJ150-15 Hydra-Jack



Maximum Capacity	150 tons
Maximum Stroke	15mm
Maximum Pressure	690 bar
Fluid Requirement	0.40 Lts
Jack Weight	26.3 Kgs

 HYDRA-CAPSULE	
HEAVY DUTY JACKING SYSTEMS	
DESCRIPTION:	HJ150-15 Hydra-Jack
DRAWING No.	Xara/HJ150-15/2007-A

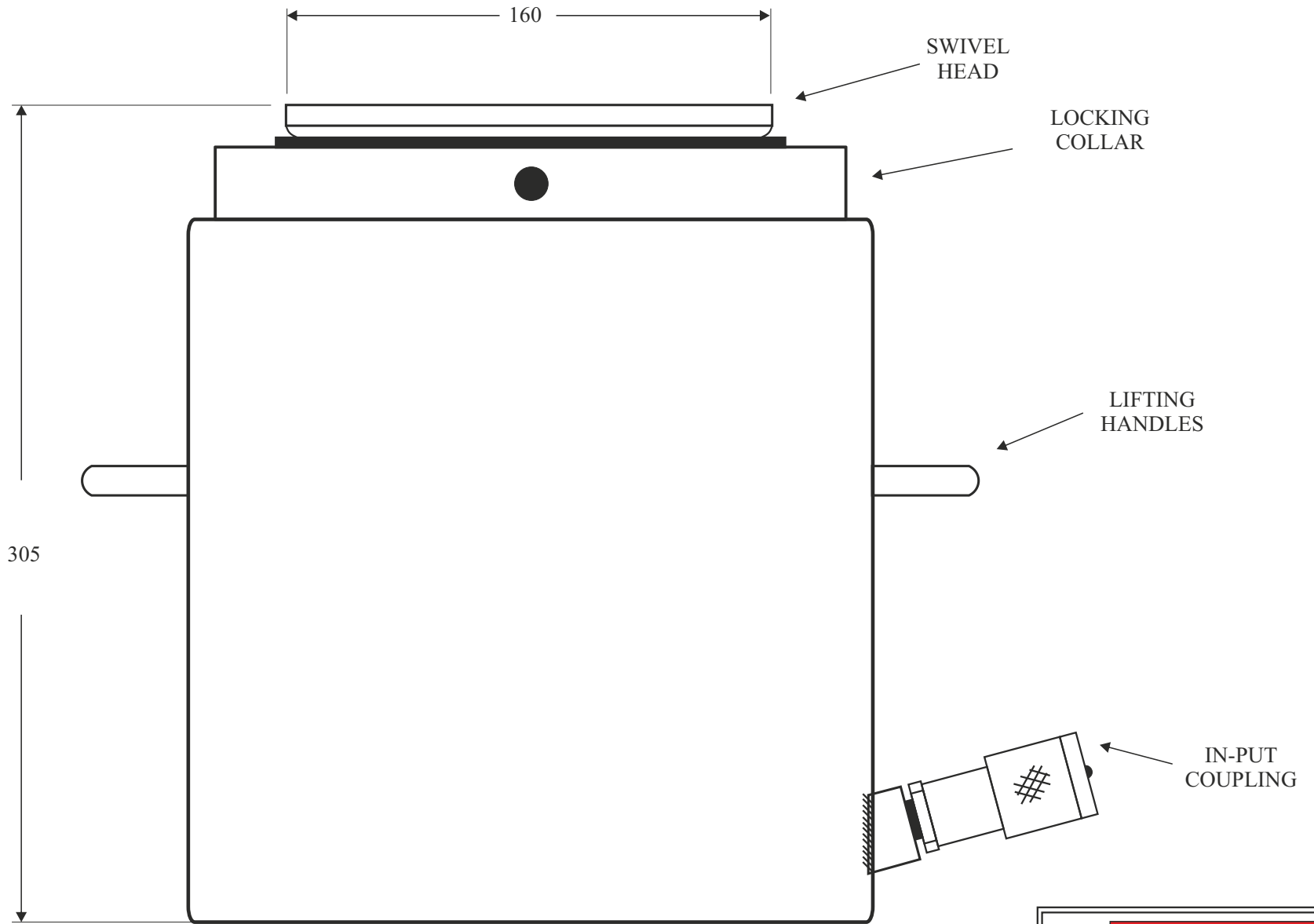
HJ180-40 Hydra-Jack



Maximum Capacity	180 tons
Maximum Stroke	40mm
Maximum Pressure	690 bar
Fluid Requirement	1.10 Lts
Jack Weight	53.5 Kgs

 HYDRA-CAPSULE	
HEAVY DUTY JACKING SYSTEMS	
DESCRIPTION:	HJ180-40 Hydra-Jack
DRAWING No.	Xara/HJ180-40/2007-A

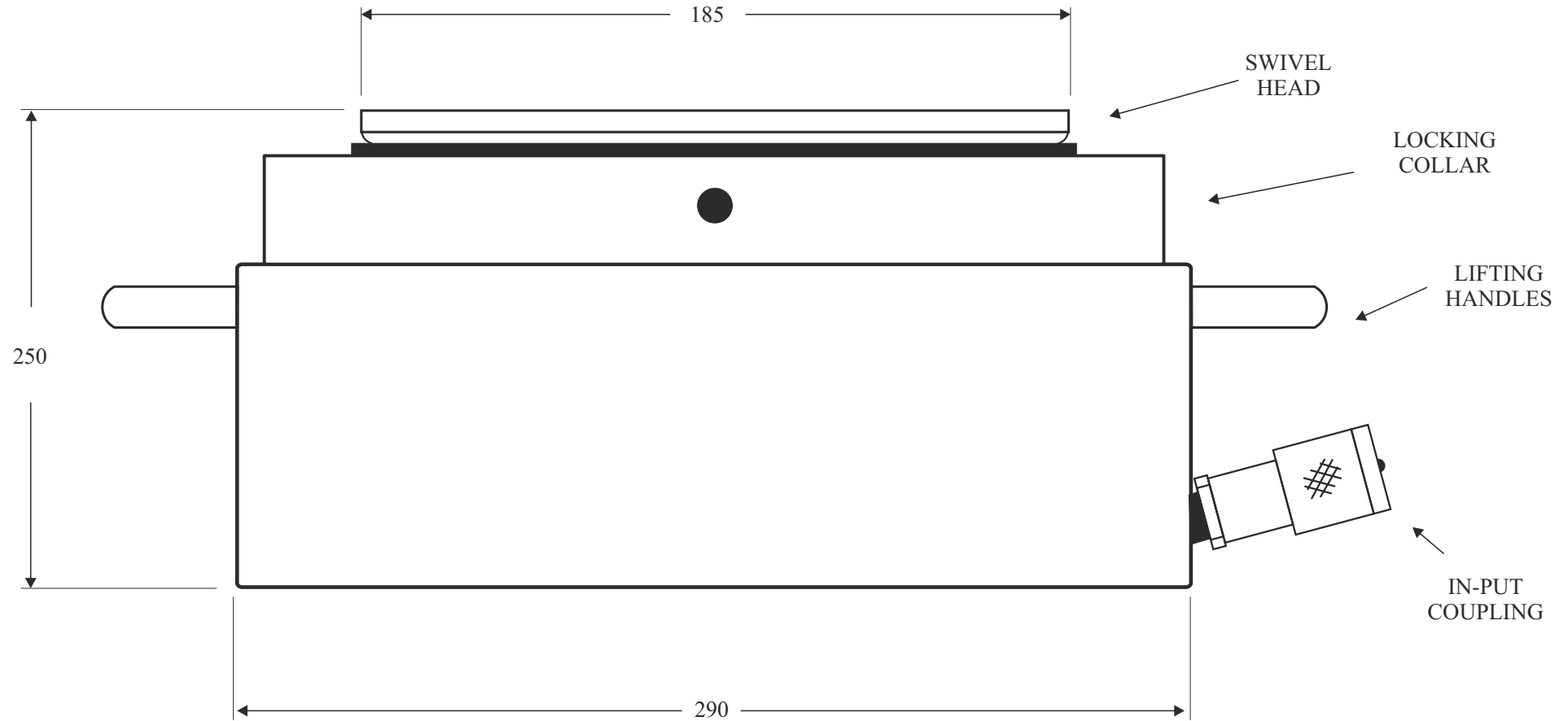
HJ180-150 Hydra-Jack



Maximum Capacity:	1800 Kns
Maximum Stroke:	150 mm
Maximum Pressure:	690 Bar
Fluid Requirement:	3.88 Lts
Jack Weight :	92.2 Kgs

HYDRA - CAPSULE	
HEAVY DUTY JACKING SYSTEMS	
DESCRIPTION:	HJ180-150 Hydra-Jack
DRAWING No.	CorelDraw-HJ180-150.cdr

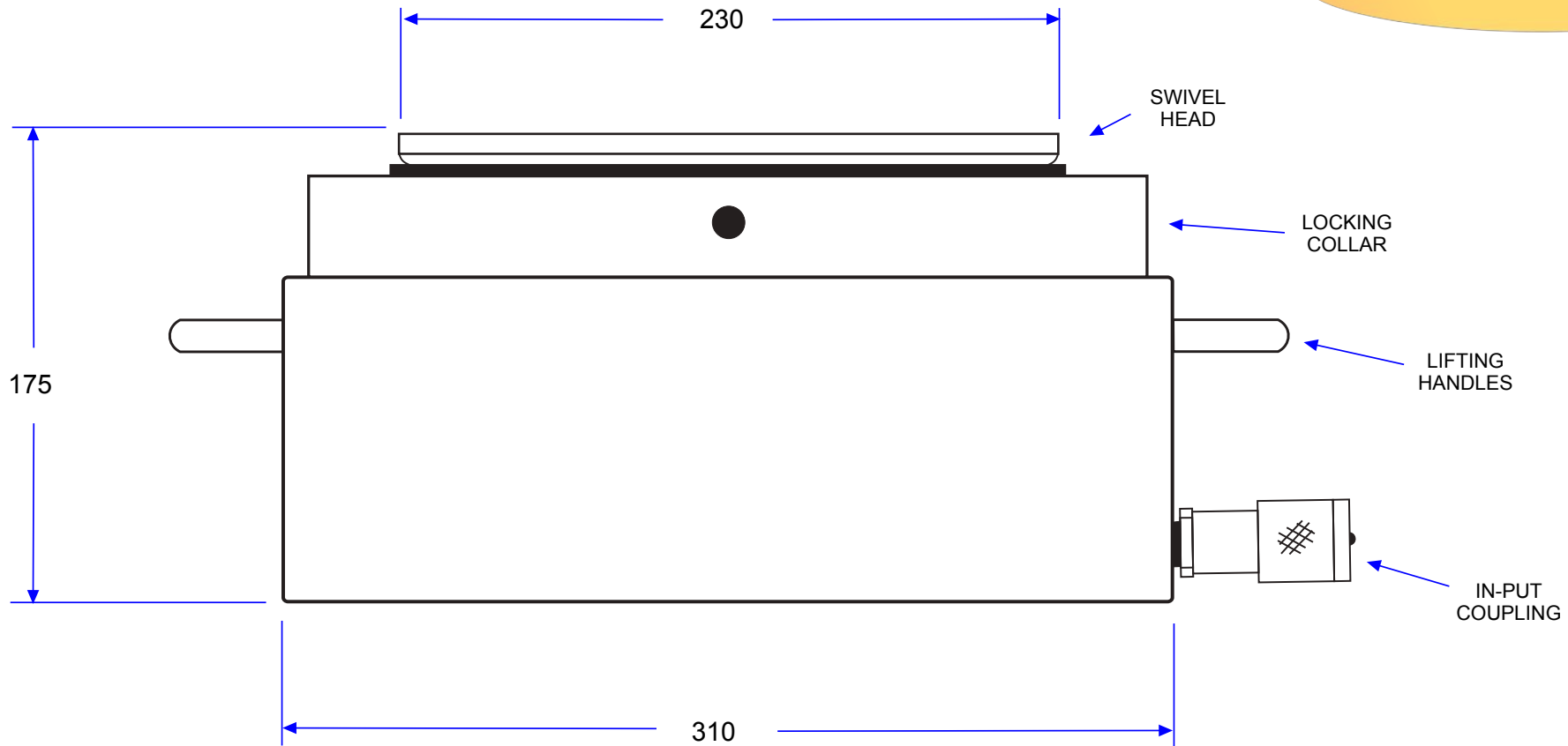
HJ250-50 Hydra-Jack



Maximum Capacity:	2500 Kns
Maximum Stroke:	50 mm
Maximum Pressure:	700 Bar
Fluid Requirement:	1.78 Lts
Jack Weight :	88 Kgs

HYDRA - CAPSULE	
HEAVY DUTY JACKING SYSTEMS	
DESCRIPTION:	HJ250-50 Hydra-Jack
DRAWING No.	CorelDraw-HJ250-50.cdr

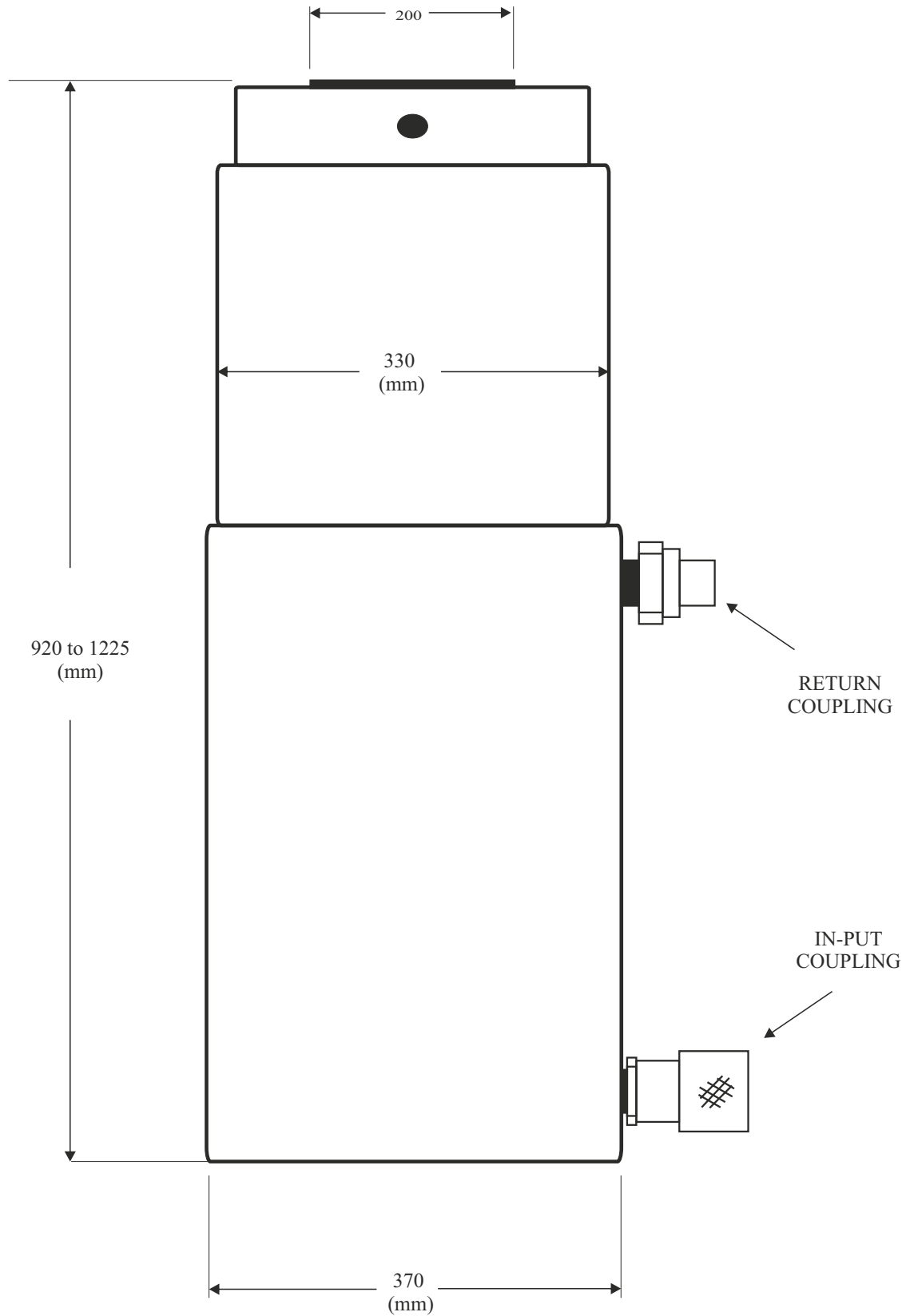
HJ360-50 Hydra-Jack



Maximum Capacity	360 tons
Maximum Stroke	50mm
Maximum Pressure	700 bar
Fluid Requirement	3.40 Lts
Jack Weight	92.3 Kgs

HYDRA-CAPSULE	
HEAVY DUTY JACKING SYSTEMS	
DESCRIPTION:	HJ360-50 Hydra-Jack
DRAWING No.	Xara/HJ360-50/2007-B

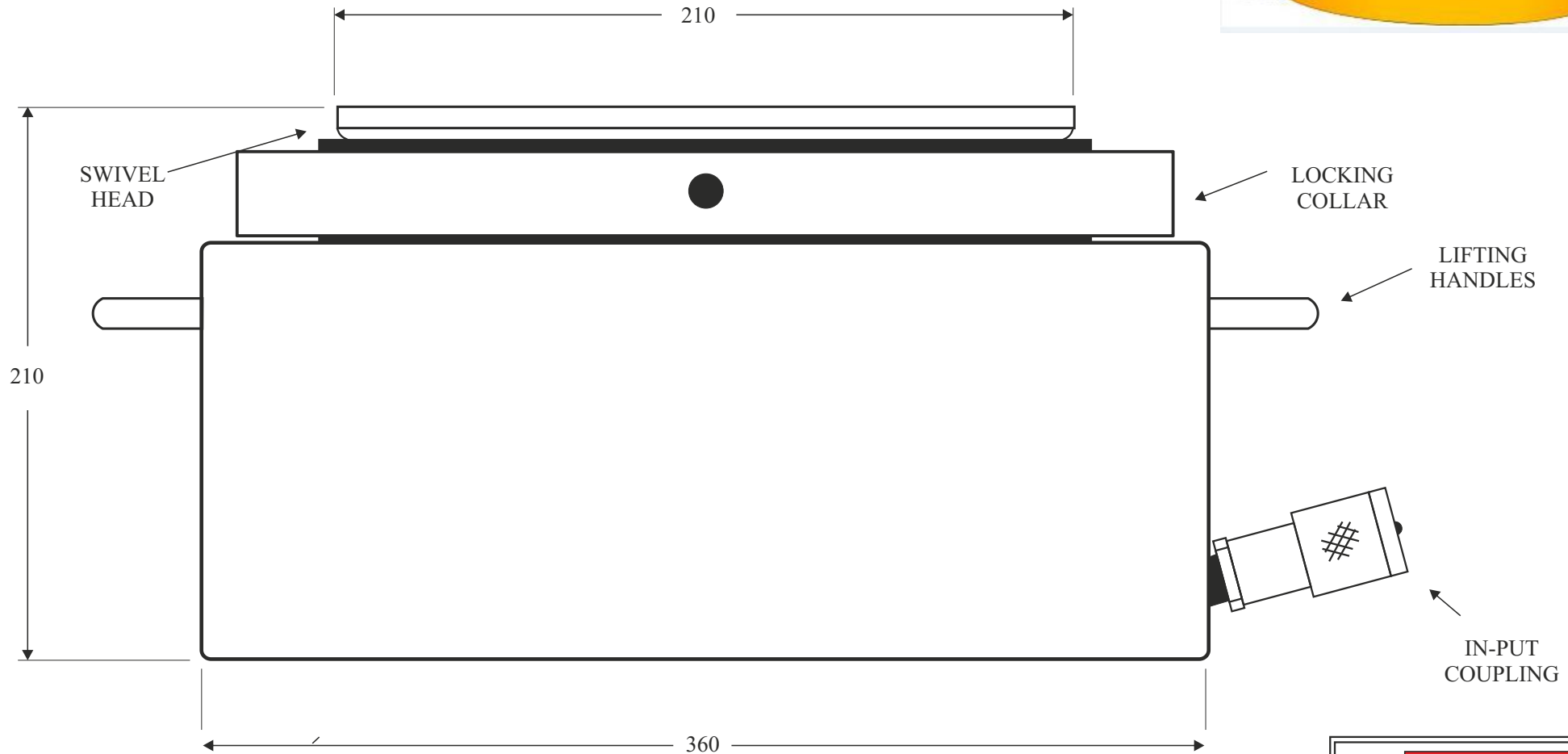
HJ400-300DA Double-Acting Locking Collar Hydra-Jack



Maximum Capacity:	4000 Kns
Maximum Stroke:	300 mm
Maximum Pressure:	700 Bar
Fluid Requirement:	19.88 Lts
Jack Weight :	748 Kgs

HYDRA - CAPSULE	
HEAVY DUTY JACKING SYSTEMS	
DESCRIPTION:	HJ400-300DA Hydra-Jack
DRAWING No.	CorelDrawHJ400-300.cdr

HJ520-45 Hydra-Jack



Maximum Capacity:	5200 Kns
Maximum Stroke:	45 mm
Maximum Pressure:	690 Bar
Fluid Requirement:	4.11 Lts
Jack Weight :	187 Kgs

HYDRA - CAPSULE	
HEAVY DUTY JACKING SYSTEMS	
DESCRIPTION:	HJ520-45 Hydra-Jack
DRAWING No.	CorelDraw-HJ520-45.cdr