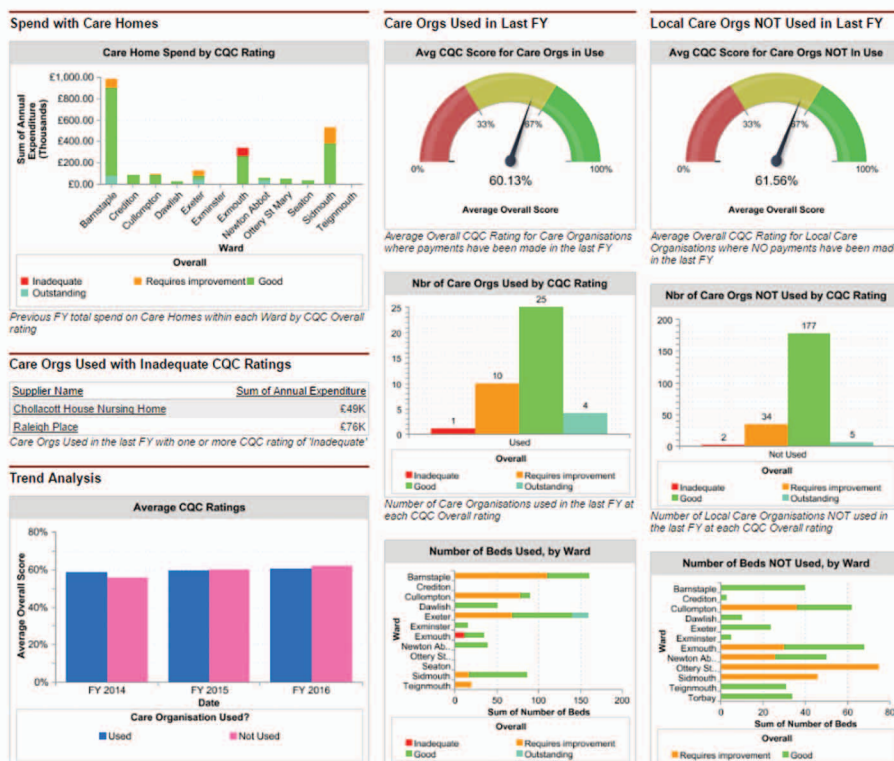


# Care Quality

## Care Provider Performance Monitoring on the Atamis Platform

Atamis Care Quality enables a Local Authority to monitor the effectiveness and performance of its adult care providers. It incorporates up-to-date performance data from the Care Quality Commission directly into Atamis supplier profiles. It also provides the perfect platform to capture performance data from the Local Authority's own quality inspections. Users can update records on the move via mobile app, arrange appointments and reminders that synchronise with Outlook and store/retrieve documents securely.



All care quality data is presented for analysis via familiar Atamis reports and dashboards that integrate with each care provider's spend and contract data. Existing Atamis features such as exception reports and auto-emailed dashboards will ensure you'll always be kept fully informed on details such as:

- Which are the poorly performing care providers in the Authority
- What meetings and dialogues are taking place with key care providers
- Which care providers are due for a review/inspection
- How the performance of providers used by the Authority compares with those not used

# Care Quality

## How it works

1. Atamis periodically imports CQC data for your local Care Locations and Providers into your Atamis system including ratings for the standard CQC performance criteria.
2. Atamis links existing care homes and other providers in Atamis to CQC Care Home Locations and Providers. System users can also add to and update these links if they need to.
3. Users gain instant access to:

- performance dashboards and provider ratings
- contact activity tracking tools and document repository via the Atamis SRM module
- visibility of spend data for care providers via the Atamis SA module
- view and record custom inspection/performance data

Supplier Detail

Supplier Name

Treelands Home Limited

Creditor Ref

1-121572214

Address

Five Mile Hill | Tedburn St Mary | Exeter

Care Organisation Used?

Used

Ward

Exeter

▼ CQC Rating

Overall Score (graphic)

Good

CQC Link

[View care provider on CQC website](#)

Number of Beds

40

Type/Sector

Residential Home

Specialism/Services

Accommodation for persons who require nursing or personal care, Dementia, Physical disabilities, Caring for adults over 65 yrs

Safe Score (graphic)

Good

Effective Score (graphic)

Requires improvement

Caring Score (graphic)

Outstanding

Responsive Score (graphic)

Good

Well-Led Score (graphic)

Good

Edit

Open Activities

New Task

New Event

Open Activities Help

Action

Subject

Task

Due Date

Status (graphic)

Priority

Assigned To

Edit | Del

[Quarterly Inspection](#)

☐

06/07/2016 13:00

[Demo Admin](#)

Edit | Cls

[Discuss building extension plans](#)

☒

13/07/2016

Normal

[Demo Admin](#)

Edit | Del

[Quarterly Inspection](#)

☐

05/10/2016 13:00

[Demo Admin](#)

Notes & Attachments

New Note

Attach File

View All

Notes & Attachments Help

Action

Type

Title

Last Modified

Created By

Edit | View | Del

Attachment

[Care Home Inspection Report KF 05-03-2016.docx](#)

29/06/2016 12:45

[Demo Admin](#)

## Management Charge

A Management Charge of between £600 and £1,800 p.a. applies (depending on the size of the Authority) for quarterly CQC data updates (monthly option also available). A 50% discount is available for orders placed before the end of October 2016.

## Licences

Standard User Licence £100 p.a. for reporting & read-only access

Enhanced User Licence £150 p.a. for full Atamis SRM module

Power User Licence £250 p.a. for mobile app, spend visibility & contract KPI scoring