



Featured News

"Our patience has been rewarded this week!! After many years of hard work, we have finally achieved our aim in securing planning consent for our new house at Bouldnor Mead in Yarmouth.

Our dream of providing the older residents of Shalfleet and Yarmouth with state of the art living accommodation, within an Abbeyfield House and in their own locality, has been realised. We have been very proud to have The Coach House in Basketts Lane, Yarmouth since the late 90's - which was generously part funded by a legacy from the late Robin and Delphie Lakeman and the Yarmouth Town Trust -, this house will remain unchanged.

However the exciting prospect of a new build, to house some 16 or more local elderly people thrills us. This will double our existing capacity in supported sheltered housing. We are all well aware, as un-paid volunteers for Abbeyfield Yarmouth Society Ltd, that the hard work will now start in earnest! From raising the necessary large funds for the building of the house and to secure the long-term future needs of our residents.

We are not daunted and as a group of dedicated people we know that we will succeed with the help of Islanders, friends and associates. We have many plans just waiting for the launch of our Fund Raising endeavours, which you will hear much more of in the next few weeks and months.

Please, if you can help get in touch, if you would like a new home in the near future let us know, and get your name on the waiting list which is now open."

PROPOSED KEY FEATURES NEW ABBEYFIELD HOUSE

A new Abbeyfield house represents a unique opportunity for Isle of Wight residents, significantly for those in Yarmouth and outlying villages. The provision of high quality supported sheltered homes by Abbeyfield, continues to build on the ideals of its founder, Richard Carr-Gomm.

When he became Britain's first male home-help in 1956, he was shocked at the isolation and loneliness of some of the older people he visited. Deciding he wanted to do much more, he resigned his commission in the Coldstream Guards and set about doing just that. He bought a small house in Bermondsey, South London, and invited two local residents who'd been living alone, to join him.

The first Abbeyfield house was born. But Richard wasn't satisfied. By the end of 1960 he'd help create new societies in eight other London boroughs. And the charity had spread to 15 places outside the capital, through the ground-breaking efforts of volunteers. We became The Abbeyfield Society,

dedicated to making the lives of older people easier and more fulfilling - a philosophy that survives and continues to inspire the charity's growth to this day.

Abbeyfield's House at Bouldnor Mead, Yarmouth, will have one simple aim - a better and dignified life for all. That is our simple motivation to invest in this site.

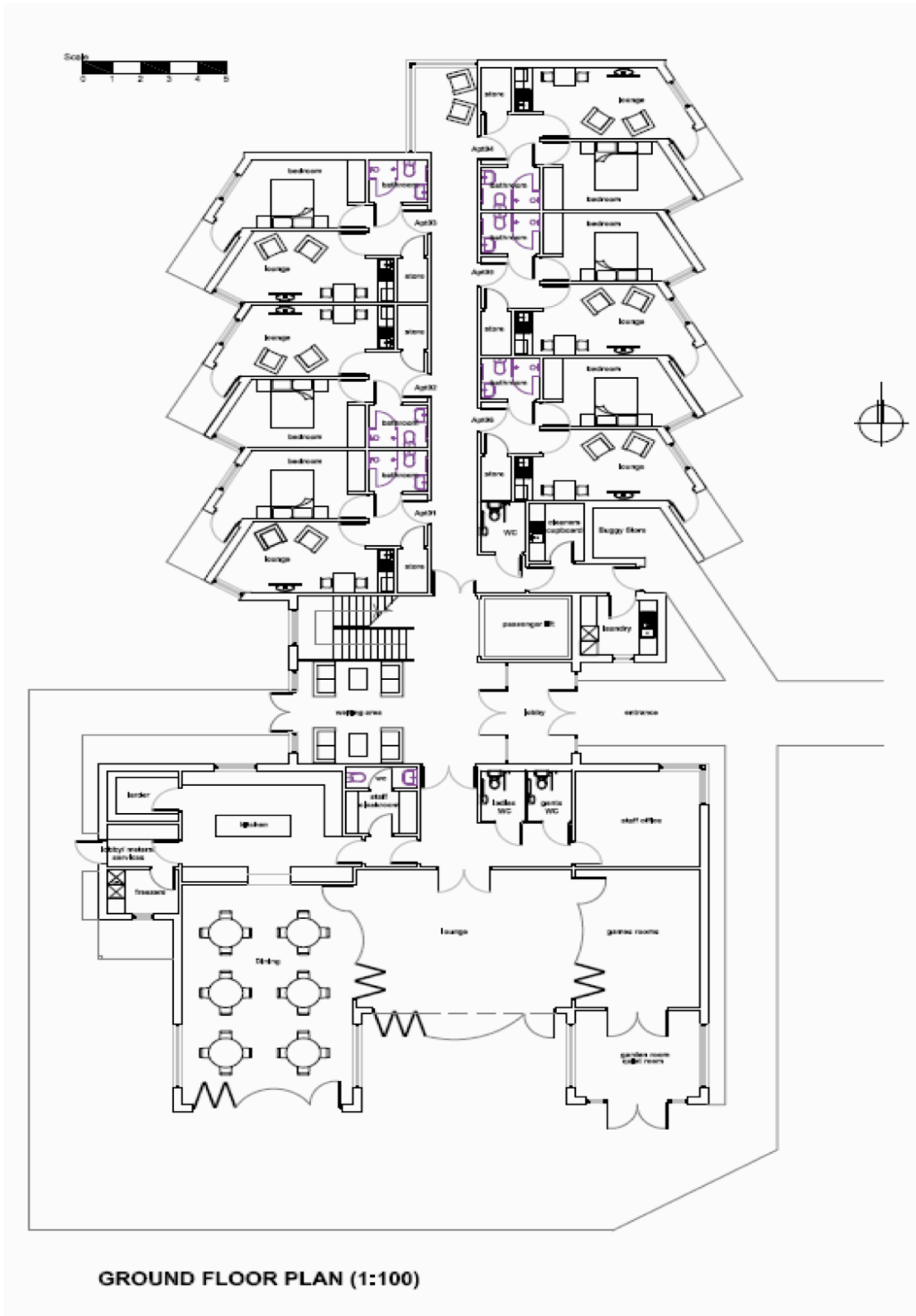
The Trustees of the existing Abbeyfield House in Yarmouth, which will remain, recognise the challenges that the building of this development poses. It is hoped that by providing a mixed development of properties around an Abbeyfield House, bringing to Yarmouth choice and availability for modern sheltered accommodation, would outweigh the initial impact of building the whole development. We recognise that we cannot care and safeguard appropriately without responding to future housing needs and demands now.

- 16 Luxury Double Apartments - variety of sizes available
- Welcoming and spacious - to high spec. finish
- Suitable for double occupancy
- Guest Facilities
- Communal dining-2 meals a day
- 24 Hour care Emergency alarm
- Monitored entry system
- Car Parking
- Lifts and other disability friendly facilities
- Fully staffed
- Landscaped gardens
- In-house activities / outings
- Laundry

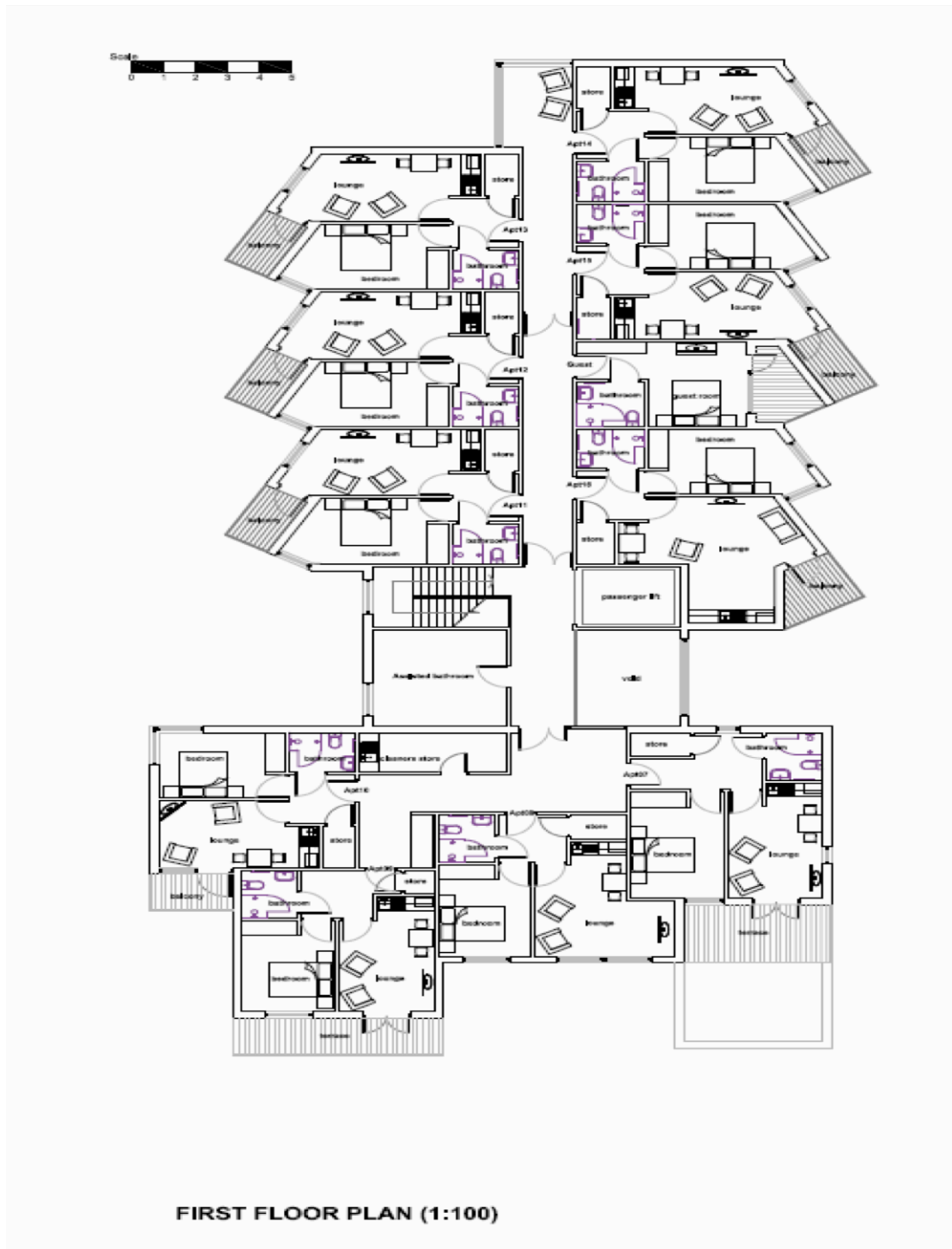
Abbeyfield House at 'BOULDNOR MEAD' will be an Independent sheltered living development providing our future residents with the privacy of their own accommodation combined with the companionship of others. Offering a home-from-home lifestyle the planned 16 Double Luxury Apartments will be presented unfurnished for residents to create their own unique space in this calm rural setting. A wide range of discreet services and facilities tailored to the resident's requirements, will enable them to rent their own apartment in a safe, supported and caring setting.

Families, friends and the wider community will be warmly welcomed to our house at 'Bouldnor Mead'. Abbeyfield at 'Bouldnor Mead' - a house for the future and for Yarmouth.

PROPOSED GROUND FLOOR PLAN FOR ABBEYFIELD HOUSE 'BOULDNOR MEADE'



PROPOSED FIRST FLOOR PLAN FOR ABBEYFIELD HOUSE 'BOULDNOR MEADE'



ABBEYFIELD YARMOUTH SOCIETY LTD SUPPORTED SHELTERED HOUSING

FREQUENTLY ASKED QUESTIONS

1. WHAT IS ABBEYFIELD SHELTERED HOUSING?

This is a type of housing specifically for those persons aged 60 years or over. It is affordable high-quality living for people who want to be as independent and self-reliant as possible, without the worry of maintaining their own home. Services are personalised to meet the needs of residents so that they can enjoy freedom, security and peace of mind whilst enjoying the company and companionship of others. This Abbeyfield House will be offered to those who currently live in the Shalfleet and Yarmouth Parishes.

2. CAN ANYBODY RENT THIS SHELTERED HOUSING?

No, you will only be allowed to rent these apartments if you are seen as a qualifying person. In this instance you must be a resident of the Shalfleet or Yarmouth Parishes for a minimum of 3 years. This qualification is subject to a cascading qualification, which means that in the first 2 months of marketing you must be a resident of the Parishes of Shalfleet or Yarmouth for 3 years. If after this 2 month period insufficient applicants come forward, then it will be offered to those people in the surrounding Parishes, or to a person who has previously resided in the Parishes of Shalfleet or Yarmouth for 5 years and want to move back. This means that they must have family members within the local community.

3. HOW DO YOU QUALIFY?

Subject to a cascading process, you will complete an Abbeyfield Yarmouth Society application form. The Society Trustees will then assess whether you fill the criteria. If approved, you will be informed of the decision and the matter can move on to the legal process.

4. CAN I RENT AN APPARTMENT IF I CURRENTLY OWN A PROPERTY?

Yes, for yourself / partner. This should be your only residence and be regarded as your only home.

5. WHAT WILL BE THE INITIAL COSTS?

Your monthly rent and one month's security bond deposit, in advance. In addition you are responsible for your own contents insurance and your own telephone rental / account.

(PLEASE NOTE: You will NOT be able to transfer your current telephone number.)

6. CAN I RENT THE PROPERTY WITH SOMEBODY ELSE?

Yes, some apartments are large enough for two people, who must both qualify by being over 60 years of age at the commencement of the agreement.

7. WHAT WILL BE MY RIGHTS, RESPONSIBILITIES AND COSTS?

The tenancy agreement will clearly define these rights and your solicitor will advise you. You will be responsible to pay the monthly rent, which includes 2 meals, heating and lighting, cleaning and maintenance of your room, and the services of the House Manager.

8. CAN I MAKE ALTERATIONS TO THE APARTMENT?

No.

9. WHAT ABOUT WHEN I WANT TO MOVE?

If you want to move on, you must inform the Abbeyfield Yarmouth Society of your intentions, by giving them 2 months notice to vacate the apartment in writing.

10. CAN I HAVE A PET?

No, unless in exceptional circumstances.

11. ILL AND MOVE ON

Residents choose their own doctor, minor ailments colds and flu are normally dealt with in the house. More serious illnesses may necessitate a move to a Nursing home or Hospital. Residents should be self-medicating but can have outside privately appointed nursing help. Abbeyfield Yarmouth Society currently has no extra-care facility and it will be your responsibility or your relatives to arrange this should it become necessary.

12. SMOKING

The entire house has a no smoking policy including in your room. Smoking will only be permitted in designated outside areas.

13. DOES MY ROOM HAVE EN-SUITE FACILITIES?

Yes. Shower, WC and basin.

14. HOW DO I COPE WITH LAUNDRY?

The house will have washing machines and tumbler dryers for your use.

15. IF I FEEL COLD, WHAT ABOUT HEATING?

All rooms are centrally heated and you can adjust the temperature of your own room.

16. DO I PAY A TV LICENCE FEE?

No, you do not have to pay.

17. WHAT ABOUT FURNITURE?

Apartments are rented unfurnished. You are expected to supply your own furniture and furnishings. Chairs and beds must comply with the 1998 Fire Safety Regulations.

18. ARE CARPETS AND CURTAINS SUPPLIED?

Yes.

19. WHO PAYS THE COST OF MY MOVE?

This is your responsibility.

20. FUTURE RENT INCREASES

Rents are reviewed yearly and Abbeyfield Yarmouth Society do our best to keep these increases as low as possible. Residents are given 28 days' notice in writing of any increase.

21. CAN I HELP IN THE HOUSE OR GARDEN?

We are happy for residents to be involved, however not in the kitchen due to Food Hygiene Regulations. Help with garden and in-house activities are welcomed.

22. IS THERE A STAFF MEMBER IN THE HOUSE AT NIGHT?

No. However, this may change. Currently you will be provided with a Wight Care monitored alarm for personal 24 hour use and the House Manager / staff are on-site from 9.00 am until 18.00 pm.

23. CAN I HAVE VISITORS AND CAN A VISITOR STAY IN THE HOUSE?

Friends and relatives can visit you in the house at any time. There is a guest room for overnight stays or longer, subject to availability. There are set charges for this.

24. WHAT ABOUT SECURITY - DO I HAVE MY OWN KEY?

Yes you will have your own entry key to the building and a key for your own room.

25. ARE ACTIVITIES AND OUTINGS ARRANGED FOR RESIDENTS?

Yes. Abbeyfield Yarmouth Society outings are organised to local events, theatres and restaurants throughout the year.

26. HOW IS MY VOICE HEARD BY THE TRUSTEES?

All residents automatically become members of the house committee and the meetings are held where their views, suggestions and grievances can be aired. Minutes of these meetings go directly to the Executive Trustee Committee for resolution. Any complaints are addressed by the Chairperson within 24 hours of notification. Furthermore, the House Manager is approachable at all times on matters that may concern residents. An annual resident review is completed on an individual basis assuring that your needs and risks are addressed.

27. HOW ARE MY SPIRITUAL NEEDS MET?

Visiting clergy do visit the Abbeyfield House. You are invited to any local Church or place of worship of your choice. Quiet areas for personal contemplation will be available in the landscaped gardens.

Note. These answers are for guidance only and DO NOT constitute a contract.

15th January 2014