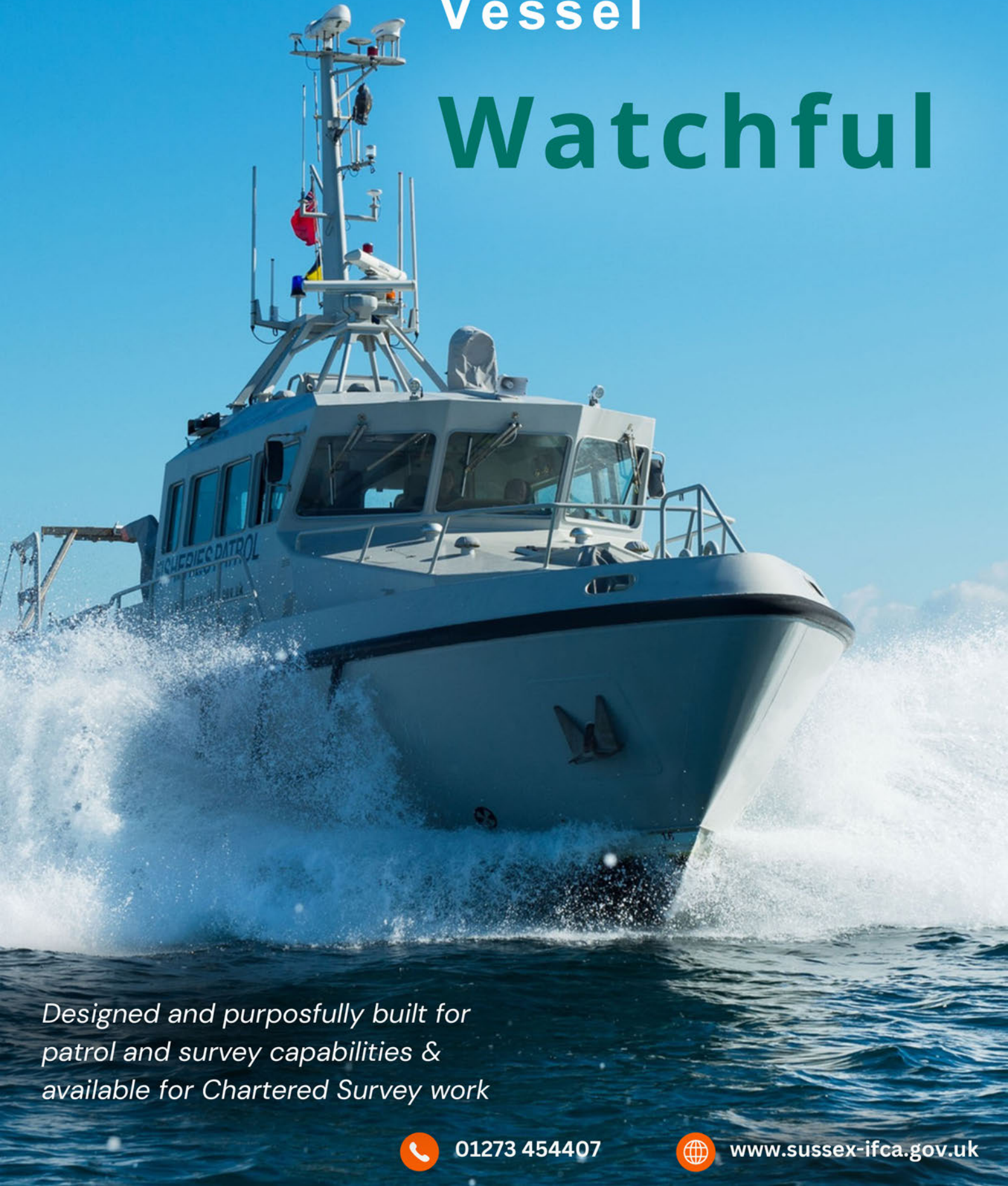




# Fisheries Patrol Vessel

# Watchful



*Designed and purposefully built for  
patrol and survey capabilities &  
available for Chartered Survey work*



01273 454407



[www.sussex-ifca.gov.uk](http://www.sussex-ifca.gov.uk)

## FPV WATCHFUL

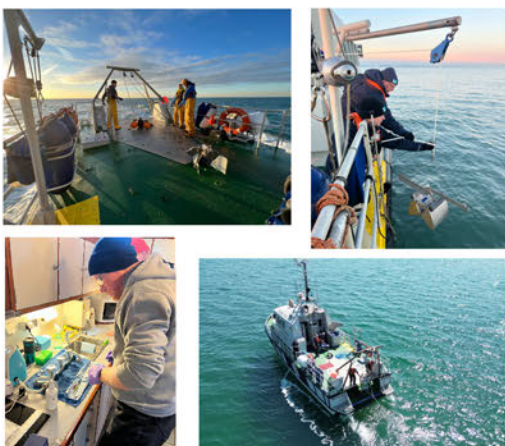
Watchful is the primary fisheries patrol vessel for Sussex IFCA, designed specifically to meet the demands of modern inshore fisheries management. Custom-built in Finland and delivered in 2003, Watchful is an 18-metre craft powered by twin Caterpillar engines, enabling speeds of up to 23 knots across the entire IFCA District.



Watchful carries its own RIB (FPV Osprey) on the stern for rapid deployment, enabling officers to safely approach fishing vessels for boardings and inspections. Thanks to its advanced technical specification and robust construction, Watchful offers a safe, dependable and well-equipped platform capable of supporting a wide range of marine operations.



Deck plates can be fitted in the area where Osprey is normally positioned at the stern, creating additional working space for survey operations. The vessel is equipped with a large hydraulic deck winch and pot hauler, which the crew can use to deploy a wide range of survey equipment, including beam trawls, towed video sleds, sidescan sonar and grab samplers.



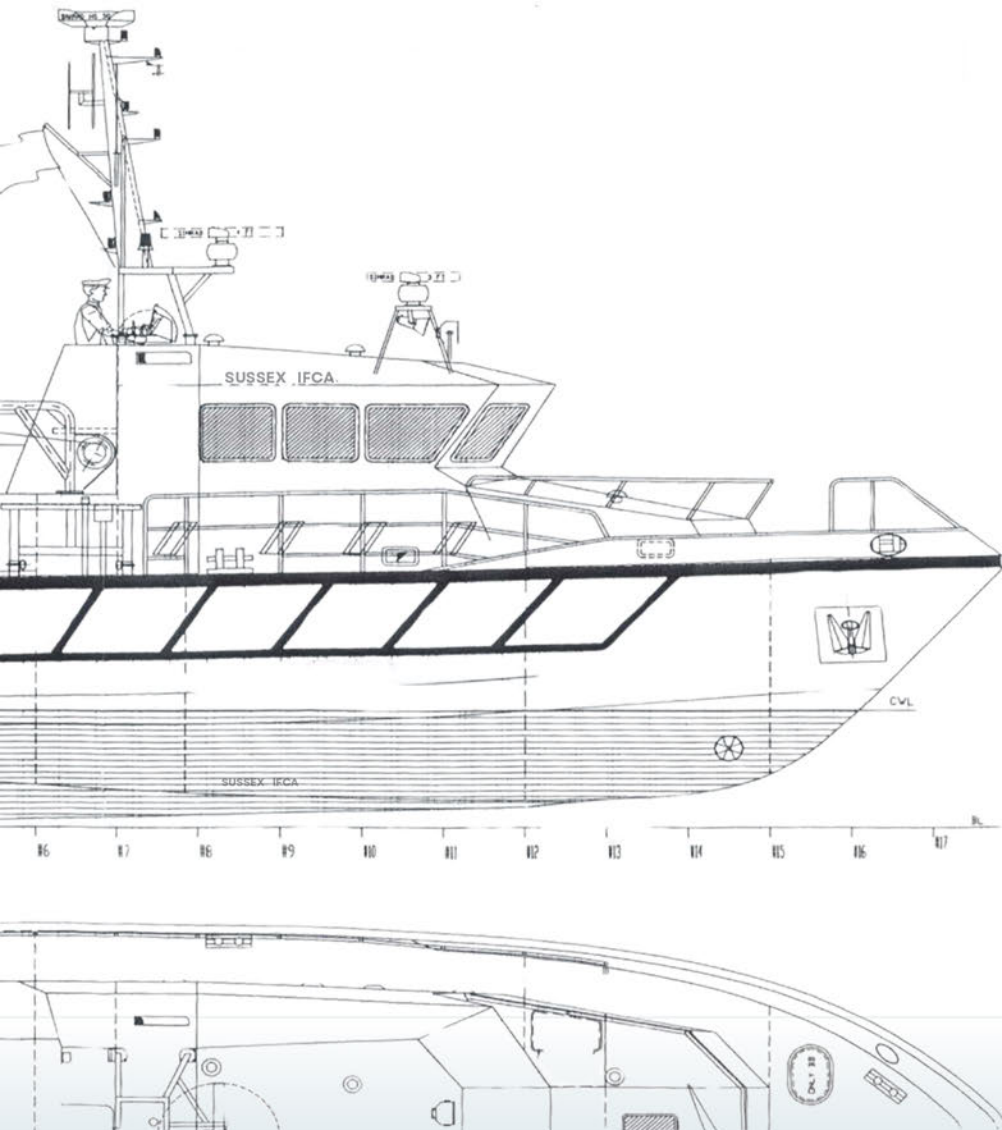
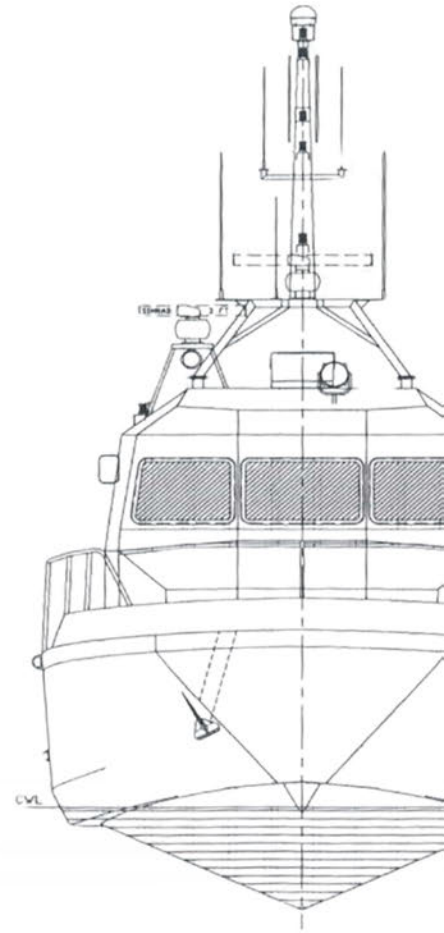
### Survey Capabilities

FPV Watchful offers a spacious and practical platform for carrying out survey operations. The vessel can accommodate a wide range of equipment, and two dedicated chart tables at the aft of the wheelhouse provide ample space for IT systems and other electronics that need to remain under cover, supported by numerous power outlets. Below deck, the vessel features a galley and accommodation area equipped with a microwave, hot water facilities, an electric hob and a refrigerator.

# SPECIFICATIONS

## CONSTRUCTION & CODING

Type of vessel:	MCA Workboat Code II (Brown code) CAT2 Vessel
In survey to:	Sea Fish Industry Authority
Home port:	Shoreham-by-Sea
Builder:	UkiWorkboat Ltd
Owner:	Sussex IFCA
Operator:	Sussex Inshore Fisheries & Conservation Authority (IFCA)
Operational area:	Sussex IFCA District; county borders and out to 12NM
Construction material:	Aluminium ENAW 5083



## SPEED CAPABILITIES

Maximum speed:	23 knots
Cruising speed:	18 knots

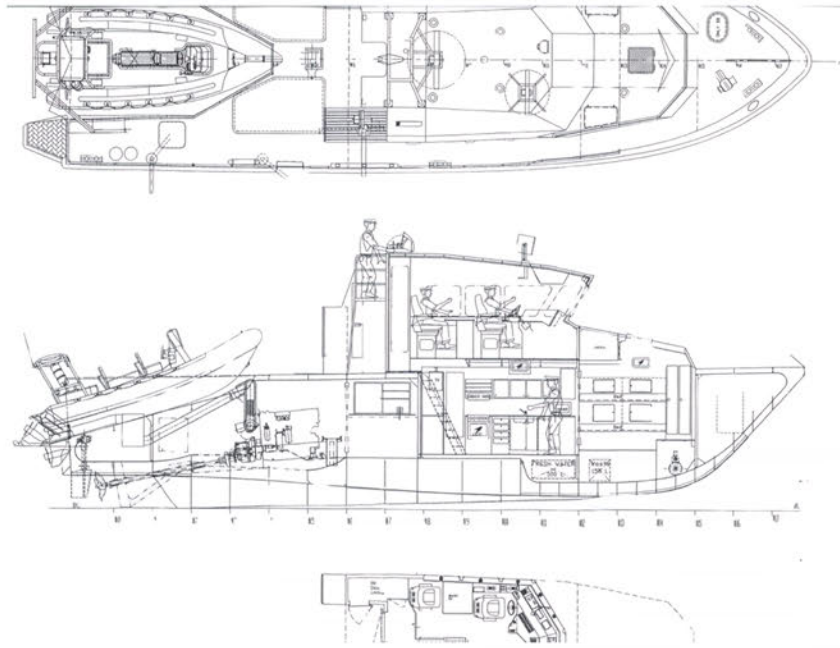
## VESSEL DIMENSIONS

Length O.A:	18.35m
Beam:	5.20m
Draught:	1.5m
Depth:	3.00m
Displacement:	35 tons
Tonnage/s:	GRT 42

# SPECIFICATIONS

## CARRYING CAPACITY

Fuel capacity:	8000 litres
Freshwater capacity:	500 litres
Sewage water capacity:	100 litres
Deck cargo capacity:	1000kg
Crew:	5 persons
Max POB:	10 persons



## MACHINERY & PROPULSION

Steering system:	Hydraulic
Main engine/s:	Caterpillar 3406E 522 kW/2200 RPM
Gearbox/s:	Twin disc 5114 Quick Shift
Propulsion:	2 x propellers 31 x 32"
Auxiliary engine/s:	BetaGen 20kVA BV2203
Generator/s:	230V AC 50Hz
Side thruster/s:	50Hz Side Power SP300, 23 kW
Winches:	Spencer Carter winch / Spencer Carter slave hauler

