

Sussex Inshore Fisheries and Conservation Authority

Nearshore Trawling Byelaw 2019

Technical Guidance



Introduction

This document provides guidance for Sussex IFCA's Nearshore Trawling Byelaw 2019, including:

- Definitions;
- The management measures;
- Maps of the prohibition area;
- Latitude longitude positions (degrees decimal minutes) along the boundary line.

For the purpose of any clarification and legal interpretation, the original byelaw should be referred to. The Authority recommends that the information be read with reference to the full byelaw where a comprehensive understanding of the regulations is necessary.

Definitions

"Towed gear" means any fishing gear designed to be towed, dragged or pushed through the water including any form of trawl or part of a trawl including warps, doors, weights or any attachment, or any fishing dredge except an oyster dredge.

The use of oyster dredges is managed under the Sussex IFCA Oyster Permit Byelaw.

Management measures

- No fishing with towed gear is permitted within the nearshore trawling prohibition area year-round.
- Passage through the prohibition area is permitted only if towed gear is secured and stowed.

The Nearshore Trawling Byelaw extends the previous trawling prohibition area along the entire Sussex coast and is in place all year round.

Revocations and amendments

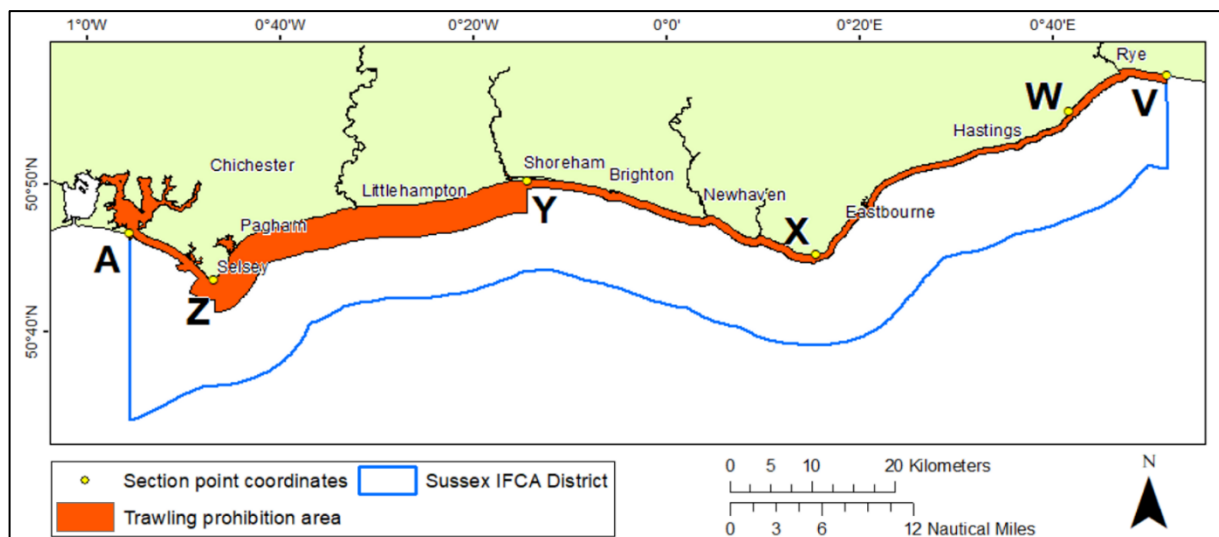
The Nearshore Trawling Byelaw includes changes to existing byelaws for the management of trawling within the district, specifically:

- The Trawling Exclusion Byelaw 1998 is revoked.
- The Fishing Instruments Byelaw 1997 is amended: 2. (iii) which defines the cod end mesh size for pair trawling for demersal species as 110mm.

Prohibition area charts and boundary guidance points

The co-ordinates and boundary lines defined within paragraph 4 of the byelaw are supported by maps and associated boundary guidance points below.

Trawling prohibition area.



Trawling prohibition area seaward extents (from mean high water springs MHWS).

Section of coast	Prohibition extent (from MHWS)
A-Z: Chichester Harbour to Selsey Bill inclusive of Selsey Bill and the Hounds Marine Conservation Zone Byelaw paragraphs 4(a) and (b)	1km (0.54nm)
Z-Y: Selsey Bill to Shoreham Harbour (western breakwater landward end) Byelaw paragraphs 4(c) and (d)	4km (2.16nm)
Y-X: Shoreham Harbour to Beachy Head Byelaw paragraph 4(e)	1km (0.54nm)
X-W: Beachy Head to Fairlight (the building known as 'Stone Walls', Hook Ledge east of Fairlight) Byelaw paragraph 4(f)	0.75km (0.40nm)
W-V: Within Rye Bay Byelaw paragraph 4(g)	1km (0.54nm)

Section point coordinates.

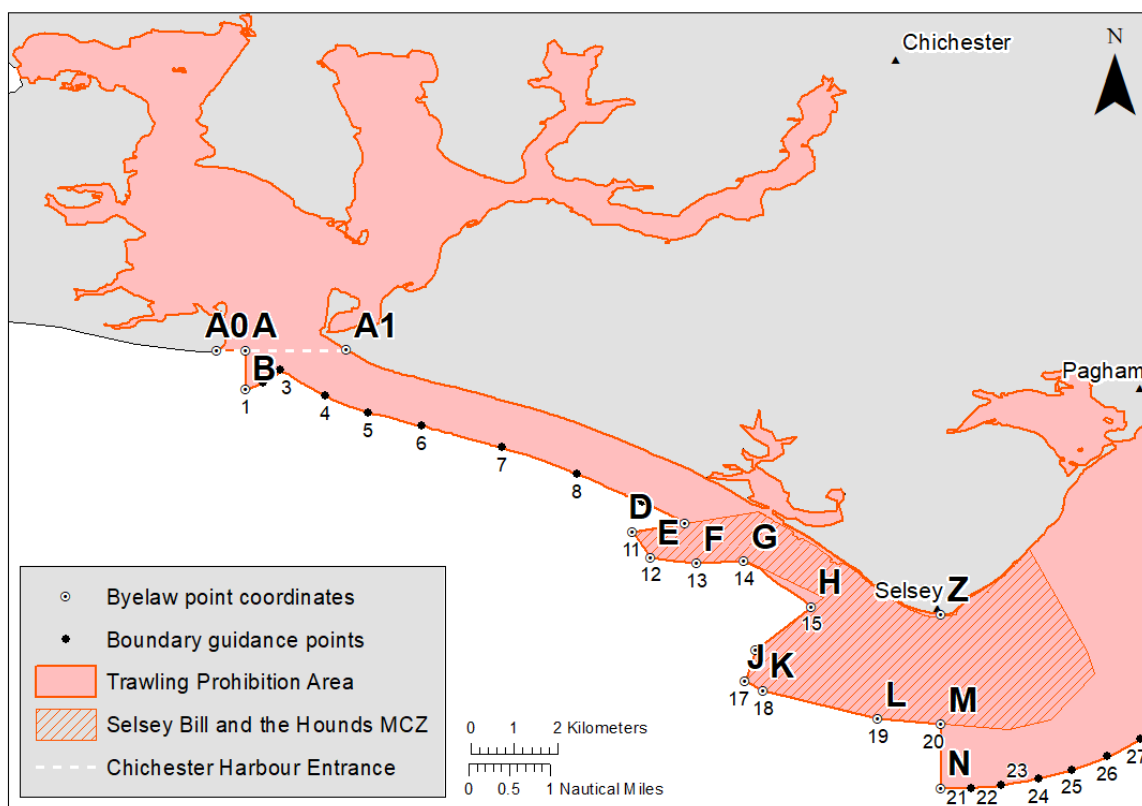
Section	Latitude	Longitude
A	50° 46.62' N	00° 55.92' W
Z	50° 43.35' N	00° 47.29' W
Y	50° 49.59' N	00° 14.96' W
X	50° 44.12' N	00° 14.50' E
W	50° 53.19' N	00° 41.04' E
V	50° 55.42' N	00° 51.16' E

The prohibition area includes the portion of Chichester Harbour that falls within Southern IFCA’s District. Sussex IFCA will manage this area in regards to the Nearshore Trawling Byelaw.

The prohibition area includes all of the Selsey Bill and the Hounds Marine Conservation Zone (MCZ). See www.sussex-ifca.gov.uk/selsey-bill-and-the-hounds-mcz for further information.

For each section of the coast, detailed boundary guidance is illustrated below.

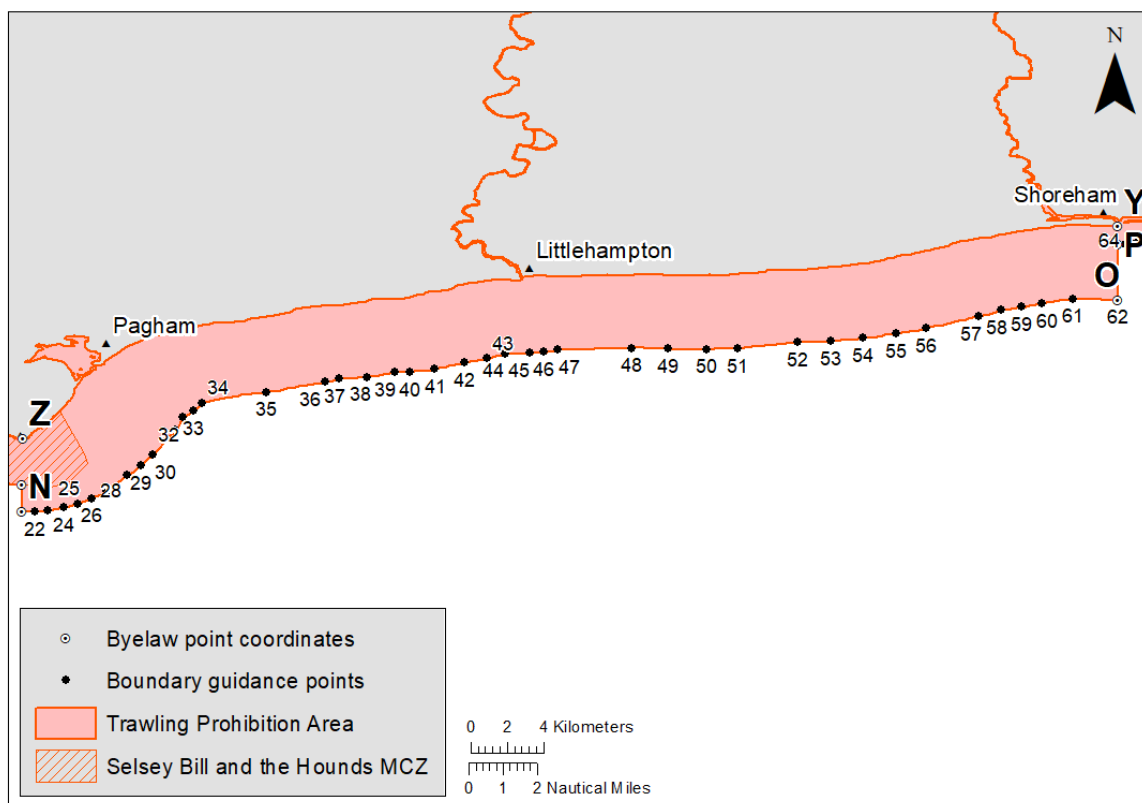
Section A to Z: Chichester Harbour to Selsey Bill 1km (0.54nm) from MHWS, including Selsey Bill and the Hounds MCZ



Point number	Latitude			Longitude		
1	50°	46.13'	N	00°	55.92'	W
2	50°	46.22'	N	00°	55.70'	W
3	50°	46.37'	N	00°	55.49'	W
4	50°	46.05'	N	00°	54.93'	W
5	50°	45.85'	N	00°	54.40'	W
6	50°	45.68'	N	00°	53.74'	W
7	50°	45.41'	N	00°	52.74'	W
8	50°	45.08'	N	00°	51.80'	W
9	50°	44.74'	N	00°	51.00'	W
10	50°	44.47'	N	00°	50.47'	W
11	50°	44.37'	N	00°	51.12'	W
12	50°	44.05'	N	00°	50.89'	W

Point number	Latitude			Longitude		
	°	'		°	'	
13	50°	43.98'	N	00°	50.32'	W
14	50°	44.01'	N	00°	49.71'	W
15	50°	43.44'	N	00°	48.90'	W
16	50°	42.90'	N	00°	49.59'	W
17	50°	42.52'	N	00°	49.72'	W
18	50°	42.40'	N	00°	49.49'	W
19	50°	42.05'	N	00°	48.07'	W
20	50°	41.98'	N	00°	47.29'	W

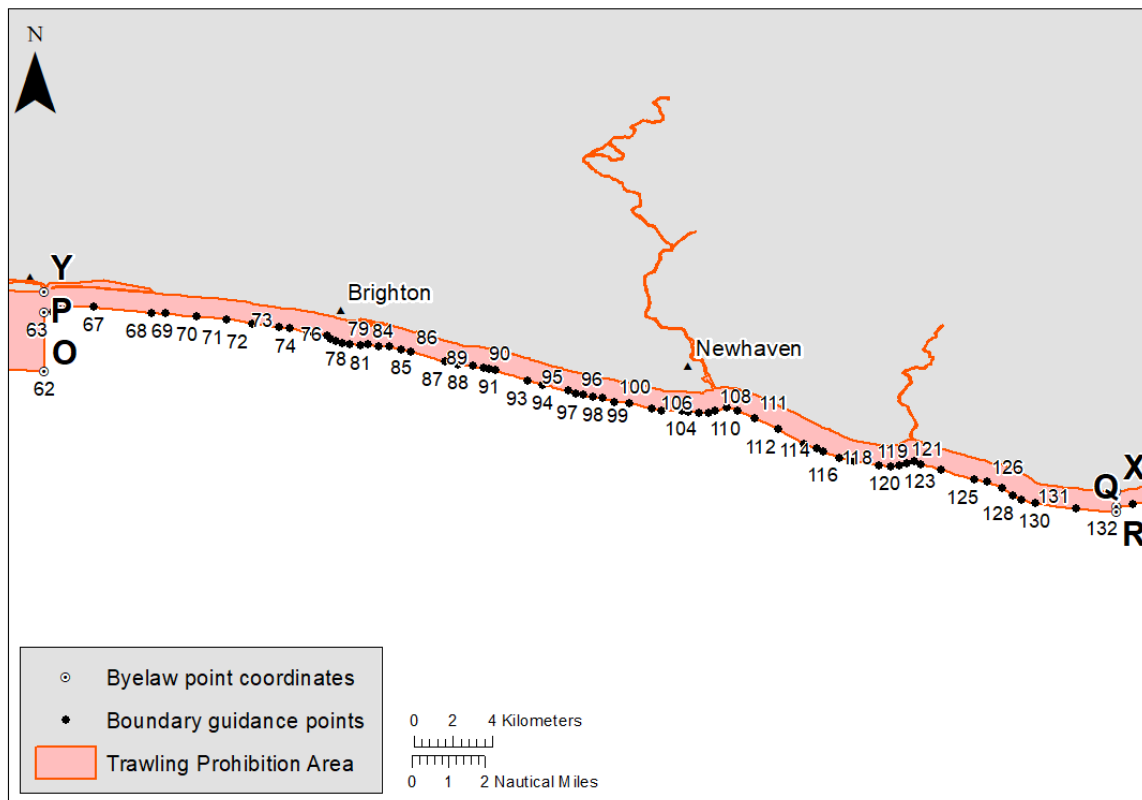
Section Z to Y: Selsey Bill to Shoreham 4km (2.16nm) from MHWS



Point number	Latitude			Longitude		
	°	'		°	'	
21	50°	41.19'	N	00°	47.29'	W
22	50°	41.20'	N	00°	46.92'	W
23	50°	41.23'	N	00°	46.54'	W
24	50°	41.31'	N	00°	46.08'	W
25	50°	41.42'	N	00°	45.66'	W
26	50°	41.58'	N	00°	45.23'	W
27	50°	41.80'	N	00°	44.81'	W
28	50°	42.26'	N	00°	44.20'	W
29	50°	42.54'	N	00°	43.81'	W
30	50°	42.86'	N	00°	43.46'	W
31	50°	43.60'	N	00°	42.77'	W

Point number	Latitude			Longitude		
32	50°	43.96'	N	00°	42.55'	W
33	50°	44.17'	N	00°	42.24'	W
34	50°	44.40'	N	00°	41.98'	W
35	50°	44.71'	N	00°	40.08'	W
36	50°	45.01'	N	00°	38.36'	W
37	50°	45.10'	N	00°	37.95'	W
38	50°	45.16'	N	00°	37.13'	W
39	50°	45.31'	N	00°	36.29'	W
40	50°	45.31'	N	00°	35.84'	W
41	50°	45.39'	N	00°	35.12'	W
42	50°	45.58'	N	00°	34.26'	W
43	50°	45.71'	N	00°	33.57'	W
44	50°	45.85'	N	00°	33.05'	W
45	50°	45.86'	N	00°	32.30'	W
46	50°	45.89'	N	00°	31.90'	W
47	50°	45.97'	N	00°	31.48'	W
48	50°	46.01'	N	00°	29.32'	W
49	50°	45.98'	N	00°	28.22'	W
50	50°	45.98'	N	00°	27.10'	W
51	50°	46.00'	N	00°	26.18'	W
52	50°	46.18'	N	00°	24.41'	W
53	50°	46.22'	N	00°	23.42'	W
54	50°	46.31'	N	00°	22.48'	W
55	50°	46.43'	N	00°	21.51'	W
56	50°	46.60'	N	00°	20.61'	W
57	50°	46.94'	N	00°	19.07'	W
58	50°	47.12'	N	00°	18.40'	W
59	50°	47.21'	N	00°	17.79'	W
60	50°	47.33'	N	00°	17.21'	W
61	50°	47.47'	N	00°	16.27'	W
62	50°	47.43'	N	00°	14.96'	W

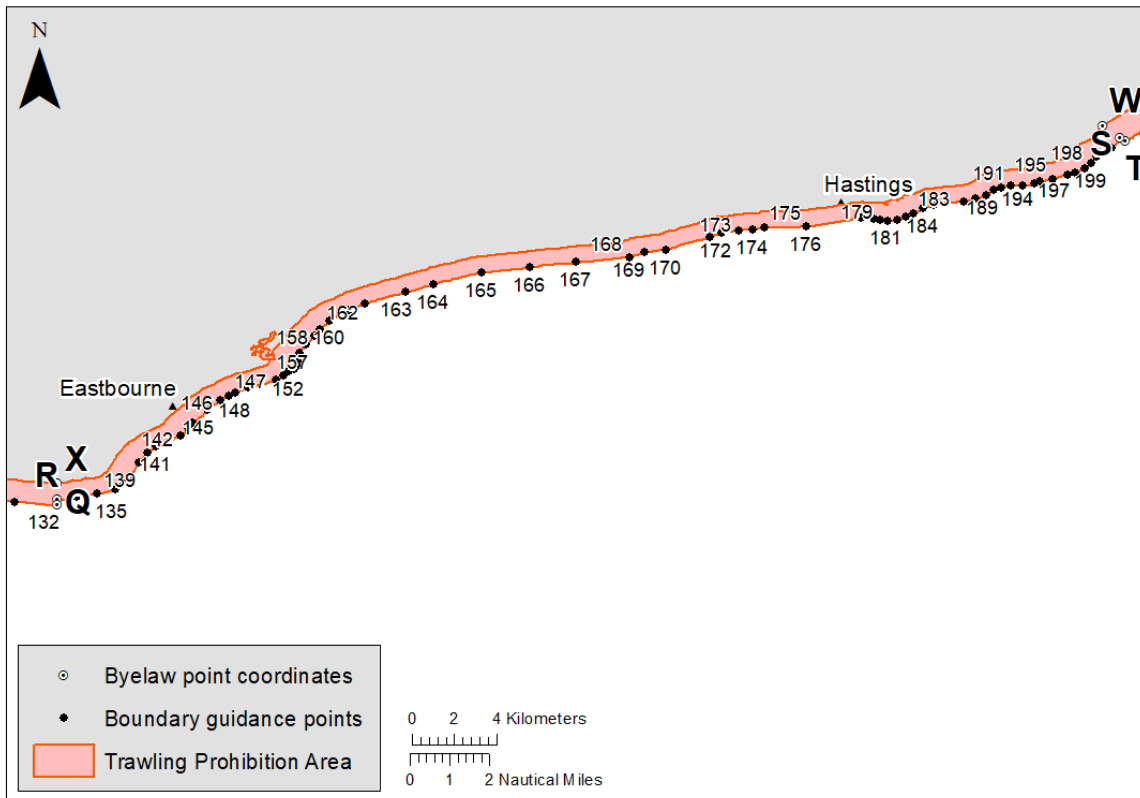
Section Y to X: Shoreham to Beachy Head 1km (0.54nm) from MHWS



Point number	Latitude			Longitude		
63	50°	49.05	N	00°	14.96	W
64	50°	49.05	N	00°	14.71	W
65	50°	49.09	N	00°	14.53	W
66	50°	49.18	N	00°	14.31	W
67	50°	49.18	N	00°	13.60	W
68	50°	49.02	N	00°	12.01	W
69	50°	49.00	N	00°	11.64	W
70	50°	48.91	N	00°	10.78	W
71	50°	48.85	N	00°	9.95	W
72	50°	48.73	N	00°	9.24	W
73	50°	48.62	N	00°	8.53	W
74	50°	48.60	N	00°	8.21	W
75	50°	48.49	N	00°	7.71	W
76	50°	48.39	N	00°	7.20	W
77	50°	48.32	N	00°	7.11	W
78	50°	48.24	N	00°	6.97	W
79	50°	48.19	N	00°	6.79	W
80	50°	48.16	N	00°	6.57	W
81	50°	48.13	N	00°	6.27	W
82	50°	48.14	N	00°	6.07	W
83	50°	48.10	N	00°	5.79	W
84	50°	48.11	N	00°	5.47	W
85	50°	48.01	N	00°	5.15	W

Point number	Latitude			Longitude		
86	50°	47.96	N	00°	4.90	W
87	50°	47.68	N	00°	3.94	W
88	50°	47.59	N	00°	3.59	W
89	50°	47.56	N	00°	3.18	W
90	50°	47.50	N	00°	2.90	W
91	50°	47.49	N	00°	2.73	W
92	50°	47.44	N	00°	2.57	W
93	50°	47.16	N	00°	1.67	W
94	50°	47.05	N	00°	1.26	W
95	50°	46.88	N	00°	0.57	W
96	50°	46.81	N	00°	0.34	W
97	50°	46.76	N	00°	0.15	W
98	50°	46.72	N	00°	0.10	E
99	50°	46.68	N	00°	0.37	E
100	50°	46.58	N	00°	0.70	E
101	50°	46.55	N	00°	1.11	E
102	50°	46.38	N	00°	1.75	E
103	50°	46.34	N	00°	2.00	E
104	50°	46.33	N	00°	2.57	E
105	50°	46.31	N	00°	2.75	E
106	50°	46.28	N	00°	3.03	E
107	50°	46.28	N	00°	3.28	E
108	50°	46.32	N	00°	3.47	E
109	50°	46.42	N	00°	3.81	E
110	50°	46.34	N	00°	4.10	E
111	50°	46.13	N	00°	4.55	E
112	50°	45.82	N	00°	5.20	E
113	50°	45.43	N	00°	5.91	E
114	50°	45.31	N	00°	6.26	E
115	50°	45.20	N	00°	6.45	E
116	50°	45.05	N	00°	6.89	E
117	50°	44.95	N	00°	7.30	E
118	50°	44.84	N	00°	7.97	E
119	50°	44.81	N	00°	8.31	E
120	50°	44.83	N	00°	8.53	E
121	50°	44.88	N	00°	8.74	E
122	50°	44.95	N	00°	8.95	E
123	50°	44.87	N	00°	9.14	E
124	50°	44.71	N	00°	9.69	E
125	50°	44.45	N	00°	10.59	E
126	50°	44.39	N	00°	10.95	E
127	50°	44.22	N	00°	11.35	E
128	50°	44.01	N	00°	11.65	E
129	50°	43.90	N	00°	11.90	E
130	50°	43.79	N	00°	12.28	E
131	50°	43.65	N	00°	13.39	E
132	50°	43.58	N	00°	14.50	E

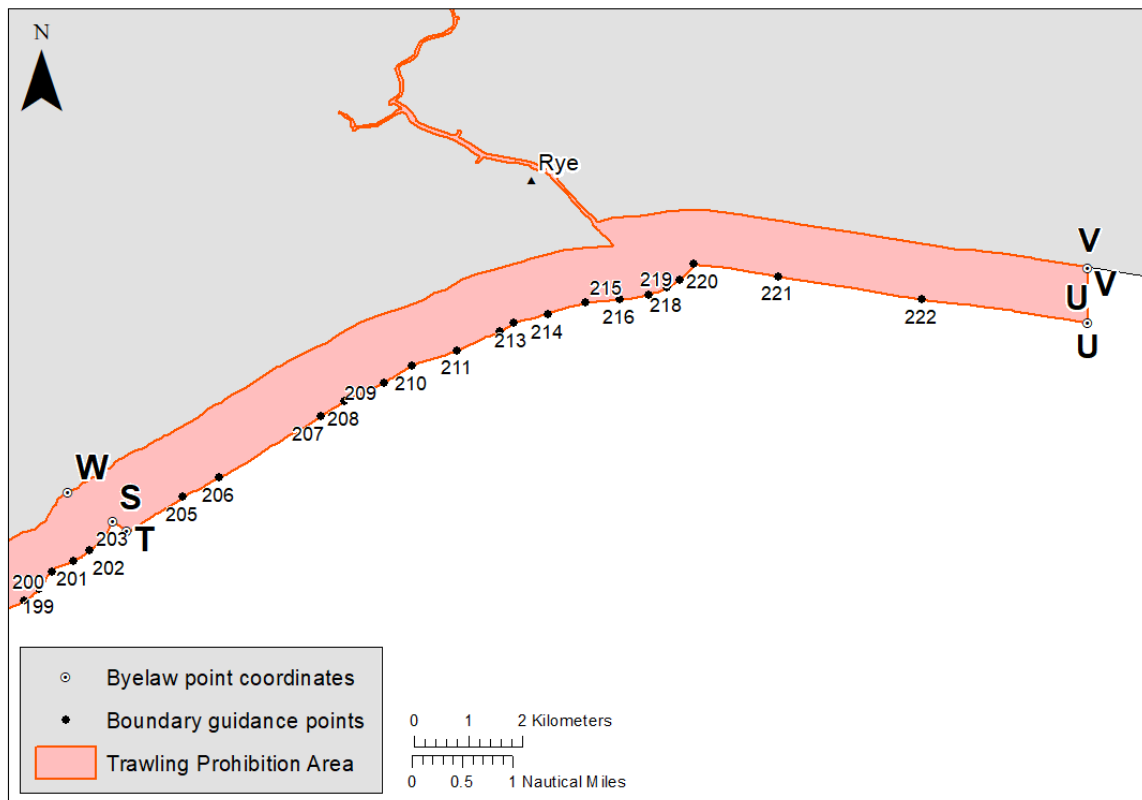
Section X to W: Beachy Head to Fairlight 0.75km (0.40nm) from MHWS



Point number	Latitude			Longitude		
133	50°	43.71'	N	00°	14.50'	E
134	50°	43.77'	N	00°	14.97'	E
135	50°	43.85'	N	00°	15.49'	E
136	50°	43.97'	N	00°	15.95'	E
137	50°	44.11'	N	00°	16.16'	E
138	50°	44.30'	N	00°	16.34'	E
139	50°	44.64'	N	00°	16.55'	E
140	50°	44.87'	N	00°	16.77'	E
141	50°	45.04'	N	00°	17.00'	E
142	50°	45.32'	N	00°	17.61'	E
143	50°	45.51'	N	00°	17.81'	E
144	50°	45.64'	N	00°	17.91'	E
145	50°	45.96'	N	00°	18.29'	E
146	50°	46.22'	N	00°	18.61'	E
147	50°	46.32'	N	00°	18.85'	E
148	50°	46.41'	N	00°	18.99'	E
149	50°	46.54'	N	00°	19.33'	E
150	50°	46.73'	N	00°	20.03'	E
151	50°	46.84'	N	00°	20.23'	E
152	50°	46.94'	N	00°	20.36'	E
153	50°	47.02'	N	00°	20.50'	E
154	50°	47.13'	N	00°	20.61'	E
155	50°	47.26'	N	00°	20.66'	E

Point number	Latitude			Longitude		
156	50°	47.41'	N	00°	20.63'	E
157	50°	47.63'	N	00°	20.80'	E
158	50°	47.84'	N	00°	21.01'	E
159	50°	48.02'	N	00°	21.16'	E
160	50°	48.25'	N	00°	21.40'	E
161	50°	48.50'	N	00°	21.89'	E
162	50°	48.68'	N	00°	22.31'	E
163	50°	48.97'	N	00°	23.34'	E
164	50°	49.16'	N	00°	24.04'	E
165	50°	49.46'	N	00°	25.26'	E
166	50°	49.59'	N	00°	26.49'	E
167	50°	49.72'	N	00°	27.65'	E
168	50°	49.85'	N	00°	29.01'	E
169	50°	49.97'	N	00°	29.40'	E
170	50°	50.04'	N	00°	29.94'	E
171	50°	50.35'	N	00°	31.06'	E
172	50°	50.47'	N	00°	31.37'	E
173	50°	50.53'	N	00°	31.79'	E
174	50°	50.56'	N	00°	32.16'	E
175	50°	50.59'	N	00°	32.45'	E
176	50°	50.62'	N	00°	33.52'	E
177	50°	50.84'	N	00°	34.90'	E
178	50°	50.83'	N	00°	35.23'	E
179	50°	50.78'	N	00°	35.38'	E
180	50°	50.76'	N	00°	35.58'	E
181	50°	50.79'	N	00°	35.83'	E
182	50°	50.89'	N	00°	36.05'	E
183	50°	50.95'	N	00°	36.23'	E
184	50°	51.09'	N	00°	36.48'	E
185	50°	51.19'	N	00°	36.74'	E
186	50°	51.26'	N	00°	37.51'	E
187	50°	51.33'	N	00°	37.81'	E
188	50°	51.43'	N	00°	38.09'	E
189	50°	51.55'	N	00°	38.27'	E
190	50°	51.60'	N	00°	38.47'	E
191	50°	51.65'	N	00°	38.71'	E
192	50°	51.66'	N	00°	39.01'	E
193	50°	51.71'	N	00°	39.30'	E
194	50°	51.77'	N	00°	39.45'	E
195	50°	51.83'	N	00°	39.78'	E
196	50°	51.93'	N	00°	40.14'	E
197	50°	51.99'	N	00°	40.35'	E
198	50°	52.11'	N	00°	40.60'	E
199	50°	52.22'	N	00°	40.75'	E
200	50°	52.40'	N	00°	40.88'	E
201	50°	52.51'	N	00°	41.10'	E
202	50°	52.61'	N	00°	41.25'	E
203	50°	52.90'	N	00°	41.48'	E

Section W to V: Rye Bay 1km (0.54nm) from MHWS



Point number	Latitude			Longitude		
204	50°	52.80'	N	00°	41.63'	E
205	50°	53.15'	N	00°	42.18'	E
206	50°	53.33'	N	00°	42.55'	E
207	50°	53.94'	N	00°	43.56'	E
208	50°	54.10'	N	00°	43.80'	E
209	50°	54.28'	N	00°	44.18'	E
210	50°	54.45'	N	00°	44.46'	E
211	50°	54.60'	N	00°	44.92'	E
212	50°	54.79'	N	00°	45.34'	E
213	50°	54.88'	N	00°	45.48'	E
214	50°	54.96'	N	00°	45.82'	E
215	50°	55.07'	N	00°	46.19'	E
216	50°	55.11'	N	00°	46.53'	E
217	50°	55.16'	N	00°	46.82'	E
218	50°	55.23'	N	00°	47.01'	E
219	50°	55.30'	N	00°	47.13'	E
220	50°	55.46'	N	00°	47.27'	E
221	50°	55.34'	N	00°	48.12'	E
222	50°	55.10'	N	00°	49.54'	E
223	50°	54.88'	N	00°	51.16'	E

Contact details

12a Riverside Business Centre,
Brighton Road,
Shoreham-by-Sea,
West Sussex,
BN43 6RE

Email: admin@sussex-ifca.gov.uk

Web: www.sussex-ifca.gov.uk

Tel: 01273 454407

Fax: 01273 454408

Date of guidance: March 2021.