

Sussex Inshore Fisheries and Conservation Authority

Byelaw guidance for marine fisheries and conservation management; Marine Protected Areas Byelaw 2015



Schedule 3: Pagham Harbour Marine Conservation Zone

Introduction

This guidance is intended to provide a summary explanation and description of the regulations defined with the Sussex Inshore Fisheries and Conservation Authority, Marine Protected Areas Byelaw 2015 and schedule 3, Pagham Harbour Marine Conservation Zone (MCZ).

The guidance includes:

- Reference to the relevant Marine Conservation Zone Order
- A description of the key byelaw management measures
- Co-ordinates and boundary lines associated with any defined zones or areas
- Graphical representations of zones showing reference points that correspond to the byelaw.
- Authority policy on interpretation of definitions where applicable
- Voluntary measures adopted by users

For the purposes of any clarification and legal interpretation the original byelaw should be referred to.

Definitions

Both paragraph 1 of the Byelaw and the interpretation section at the start of schedule 3 provide definitions that relate the management measures. The byelaw should be referred to for this specific information.

Paragraphs 1 to 4 provide the byelaw framework under which the management for specific sites (e.g. Pagham Harbour MCZ) is defined in numbered schedules

Protected Area

The byelaw provides details of the relevant Pagham Harbour, MPA designation Order 2013 (Ministerial Order 2013 No.17).

Management Measures

Towed Gear

- a) Fishing with towed gears, such as trawls and dredges, is prohibited in the MCZ.
- b) A person must not fish in any part of the General Conservation Areas with towed gear at any time.

Nets

A person must not set any net from the shore in any part of the MCZ.

Lining

A person must not set any lining gear from the shore in any part of the MCZ.

Shore-related gathering and fishing

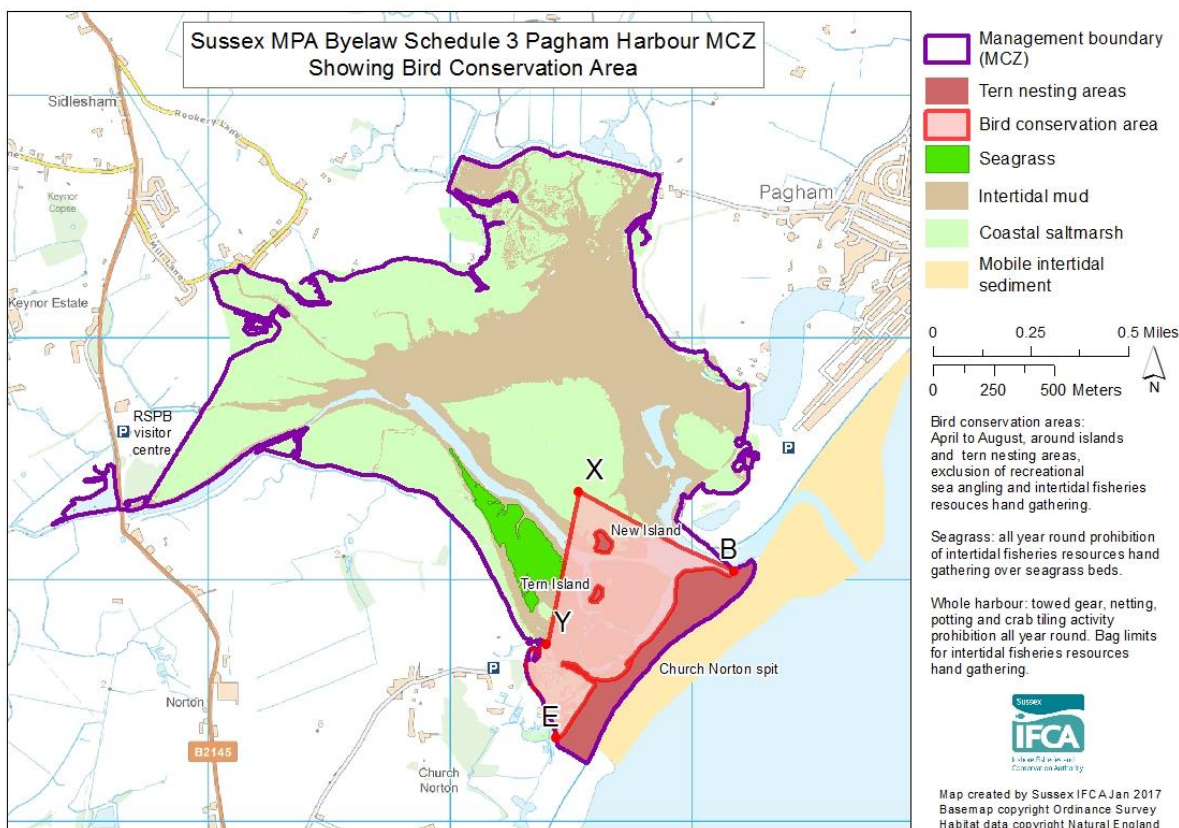
It is prohibited to remove from the shore, from any part of the MCZ, in a single calendar day more than:

- (i) 2 lobsters (*Homarus gammarus*)
- (ii) 5 edible crabs (*Cancer pagurus*)
- (iii) 20 crabs in total of any species other than *Cancer pagurus*
- (iv) 1 kg of mollusc shellfish (bivalve or gastropod species) except piddock species (*Pholadidae* family), blue mussels (*Mytilus edulis*) or native oyster (*Ostrea edulis*)
- (v) A total of 1 kg of prawns or shrimps
- (vi) 1 kg of marine worms (*Annelida*)
- (vii) 2 kg of intertidal seaweed

It is prohibited to remove any quantity of the above species in connection with any commercial purpose.

Positions of Marine Conservation Zone

Pagham Harbour MCZ and associated prohibition area



Bird Conservation Area – boundary lines

Boundary line	Set of coordinates of points which boundary line joins	Topographical description of boundary line
1	X,B	Geodesic line
2	B,E	Mean high water line on the landward side of Church Norton Spit
3	E,Y	Mean high water line
4	Y,X	Geodesic line

Where

- X is 50° 45.58'N 0° 45.53'W
- B is 50° 45.43'N 0° 45.07'W
- Y is 50° 45.25'N 0° 45.65'W
- E is 50° 45.07'N 0° 45.71'W

List of Protected MPA Features

Protected feature

Seagrass beds
Defolin's lagoon snail (*Caecum armoricum*)
Lagoon sand shrimp (*Gammarus insensibilis*)

Type of feature

Marine habitat
Species of marine fauna
Species of marine fauna

Notifying the Authority if you witness illegal activity, help us protect the MCZ.

What can I do?

If you see what you believe is illegal activity taking place -

- Make a written record what you see (simple notes are good)
- Take a photograph if you can
- If relevant obtain a position of the vessel and your vessel's position (e.g. observed vessel was approx. 200 metres to the south of our position at Lat/Long).

Contact details

12a Riverside Business Centre, Brighton Road, Shoreham-by-Sea, West Sussex BN43 6RE
Email: admin@sussex-ifca.gov.uk
Web: www.sussex-ifca.gov.uk
Tel: 01273 454407
Fax: 01273 454408

Information on offences and penalties

It is the responsibility of those fishing for both commercial and recreational purposes within any marine conservation zone to ensure that any fishing activity complies with the Sussex IFCA MPA Byelaw.

It is an offence not to comply with any reasonable request made by an Inshore Fisheries & Conservation Officer whilst conducting their duties. This includes; facilitating the boarding and inspection of any vessel engaged in fishing, inspection of vehicles and equipment associated with fishing activities.

The maximum penalty for non-compliance of a byelaw is a fine not exceeding £50,000. Breaches of any byelaw condition can be subject to an Administrative Penalty sanction according to a standard scale.

Illegal fishing equipment may be immediately seized.

Date of guidance: December 2017