

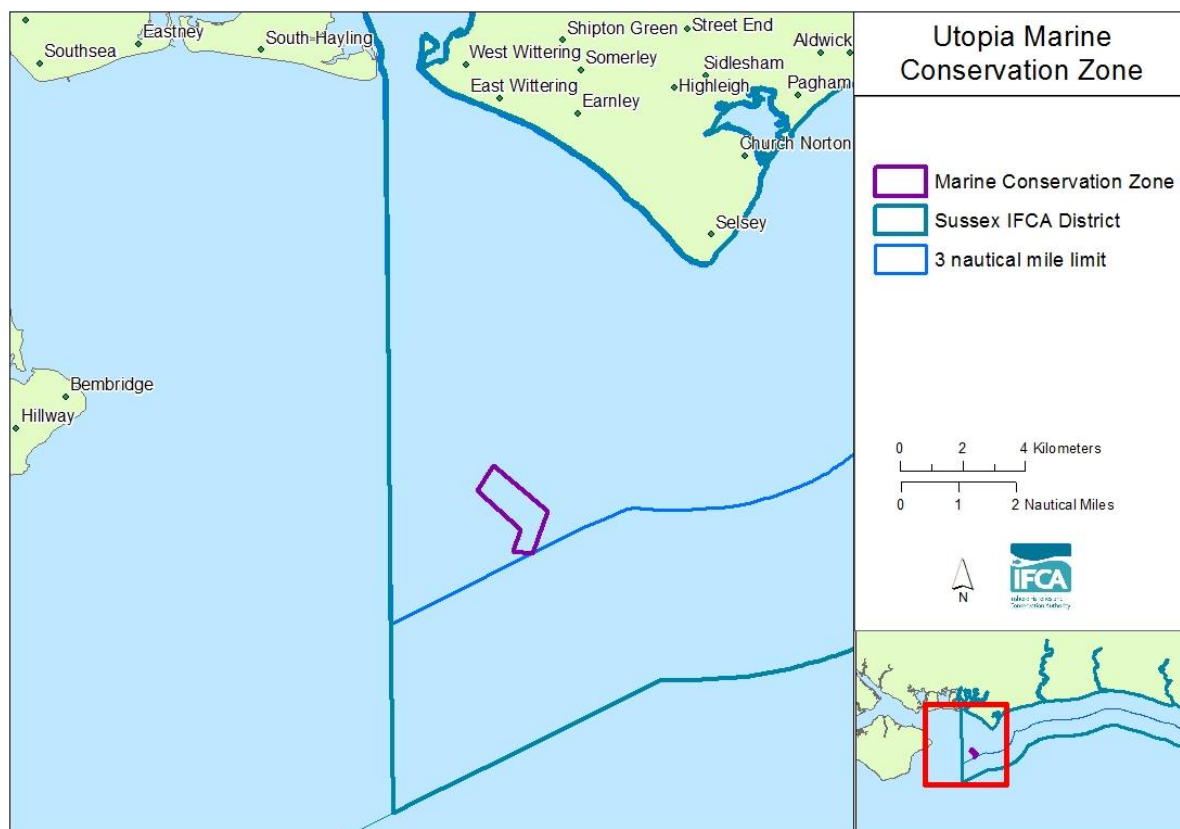
Introduction

This guidance is intended to provide a summary explanation and description of the regulations defined with the Sussex Inshore Fisheries and Conservation Authority, Marine Protected Areas Byelaw 2015 and schedule 4, Utopia Marine Conservation Zone (MCZ).

The guidance includes:

- Reference to the relevant Marine Conservation Zone Order
- A description of the key byelaw management measures
- Co-ordinates and boundary lines associated with any defined zones or areas
- Graphical representations of zones showing reference points that correspond to the byelaw.
- Authority policy on interpretation of definitions where applicable
- Voluntary measures adopted by users

For the purposes of any clarification and legal interpretation the original byelaw should be referred to.



Utopia MCZ location map

Definitions

Both paragraph 1 of the Byelaw and the interpretation section at the start of schedule 4 provide definitions that relate the management measures. The byelaw should be referred to for this specific information.

Paragraphs 1 to 4 provide the byelaw framework under which the management for specific sites (e.g. Utopia MCZ) is defined in numbered schedules

Protected Area

The byelaw provides details of the relevant Utopia, MPA designation Order 2013 (Ministerial Order 2016 No.21).

Management Measures for Utopia Marine Conservation Zone

The Utopia Marine Conservation Zone schedule applies to:

- a) The areas designated in the Utopia Marine Conservation Zone Designation Order 2016 (Ministerial Order 2016 No. 21), and;
- b) The sea area within 0.5 nautical miles of the area described in paragraph (a).

Towed gear management measures

- a) A person must not fish with towed gear in the designated area.
- b) Vessels fishing with towed gear within 0.5 nautical miles of the designated area must be fitted with a vessel information and monitoring system.
- c) Towed gear on vessels which are transiting through the designated area must be secured and stowed.

List of Protected MPA Features

Protected feature

High energy circalittoral rock
Moderate energy circalittoral rock
Subtidal coarse sediment
Subtidal mixed sediments
Subtidal sand
Fragile sponge and anthozoan communities on subtidal rocky habitats

Type of feature

Broadscale marine habitat
Broadscale marine habitat
Broadscale marine habitat
Broadscale marine habitat
Broadscale marine habitat
Marine habitat

CO-ORDINATES OF MANAGEMENT ZONES

Boundary line	Set of co-ordinates of points which boundary line joins	Topographical description of boundary line
1	A, B	Geodesic line
2	B, C	Geodesic line
3	C, D	Geodesic line
4	D, E	Geodesic line
5	E, F	Geodesic line
6	F, A	Geodesic line

where—

"A" is 50° 39.93' N and 00° 53.17' W;

"B" is 50° 39.12' N and 00° 51.72' W;

"C" is 50° 38.37' N and 00° 52.03' W;
"D" is 50° 38.41' N and 00° 52.58' W;
"E" is 50° 38.81' N and 00° 52.42' W;
"F" is 50° 39.51' N and 00° 53.61' W

Notifying the Authority if you witness illegal activity, help us protect the MCZ.

What can I do?

If you see what you believe is illegal activity taking place -

- Make a written record what you see (simple notes are good)
- Take a photograph if you can
- If relevant obtain a position of the vessel and your vessel's position (e.g. observed vessel was approx. 200 metres to the south of our position at Lat/Long.

Contact details

12a Riverside Business Centre, Brighton Road, Shoreham-by-Sea, West Sussex BN43 6RE

Email: admin@sussex-ifca.gov.uk

Web: www.sussex-ifca.gov.uk

Twitter: @sussex_ifca

Tel: 01273 454407

Fax: 01273 454408

Information on offences and penalties

It is the responsibility of those fishing for both commercial and recreational purposes within any marine conservation zone to ensure that any fishing activity complies with the Sussex IFCA MPA Byelaw.

It is an offence not to comply with any reasonable request made by an Inshore Fisheries & Conservation Officer whilst conducting their duties. This includes; facilitating the boarding and inspection of any vessel engaged in fishing, inspection of vehicles and equipment associated with fishing activities.

The maximum penalty for non-compliance of a byelaw is a fine not exceeding £50,000. Breaches of any byelaw condition can be subject to an Administrative Penalty sanction according to a standard scale.

Illegal fishing equipment may be immediately seized.

Date of guidance: December 2017