

## Brighton Marina

The Beachy Head West Marine Conservation Zone (MCZ) stretches 24km from Brighton marina right along to Beachy Head. This area is designated for its chalk reef, mussel beds and the short snouted seahorse, amongst other things. Chalk reef habitat is very rare, with over half of Europe's coastal chalk found in the South and East of England, making it an important area for conservation.

## Ways to reduce your footprint on the local marine environment

As a user of Brighton marina there are a few simple ways in which you can minimise the impact you have on the marine environment. Having a positive impact on the local environment is important, whether you're a regular user of the marina or an occasional visitor.

### Respect the wildlife

When nearby birds and animals are resting or feeding:

- Observe from a safe distance
- Keep noise levels down and engine revs low
- Do not harass any wildlife



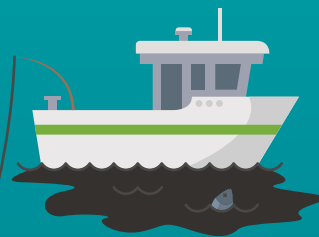
### Blackwater & pump out facilities

Where possible, use pump out facilities provided. Alternative solutions are; self-contained composting toilets or portable toilets, disposing of waste in the correct manner on land.



### Litter & recycling

Never drop litter or waste in to the sea. Try to remove and recycle litter found in the marine environment. Plastic waste is a growing concern for both marine organisms, and those who eat them.

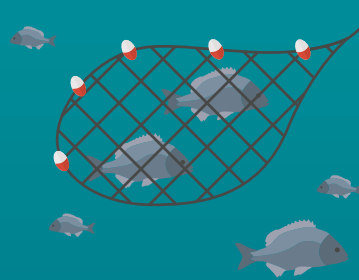


### Oil and fuel spillages

Fuel and oils create a toxic film which can suffocate aquatic plants and animals. Check before pumping your bilge. Install a filter and put a bilge sock in to mop up spills. Report any spills immediately.

### Fish responsibly

Always return undersized fish. Never take more fish than you, or your family can consume. Dispatch all fish quickly and humanely. Always follow local byelaws and national regulations. And remember, dragging your anchor can cause damage to the seabed.



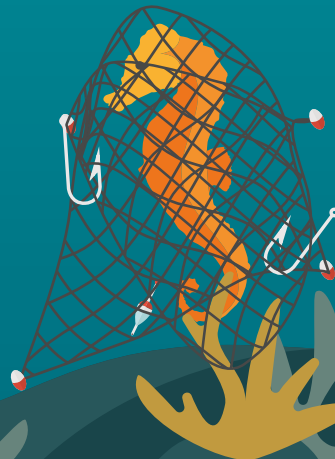
### Invasive non-native species

Boat users can unknowingly transport species which are not native to our waters, these invasive species often change the local natural habitat. Take some time to learn how to identify and remove invasive species.



### Protected habitats

Use designated slipways, launching and landing spots to protect shoreline habitats, nesting and feeding birds. Use mooring buoys instead of anchors where possible. Fragile sponges and soft corals are found throughout Sussex. The chalk reefs around Brighton marina are nationally protected.



### Ghost gear & recycling

If it is safe, release any trapped wildlife and remove the gear from the water or shoreline and dispose of in litter bins when on land. Do not discard old fishing gear in to the sea. An estimated 640,000 tonnes are left in oceans EVERY YEAR.