

Chichester Harbour

Chichester Harbour is an important local fishing ground, as well as having a variety of protected marine habitats and bird species under these designations, all of which contribute to a vibrant and healthy ecosystem:

Chichester Harbour Area of Outstanding Natural Beauty, Solent Maritime Special Area of Conservation (SAC), Chichester and Langstone Harbour Special Protection Area (SPA), Chichester Harbour Site of Special Scientific Interest (SSSI).

Ways to reduce your footprint on the local marine environment

As a user of Chichester Harbour there are a few simple ways in which you can minimise the impact you have on the marine environment. Having a positive impact on the local environment is important, whether you're a regular user of the harbour or an occasional visitor.

Respect the wildlife

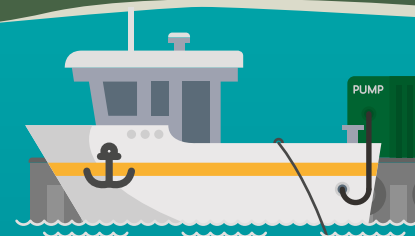
When nearby birds and animals are resting or feeding:

- Observe from a safe distance
- Keep noise levels down and engine revs low
- Do not harass any wildlife



Blackwater & pump out facilities

Where possible, use pump out facilities provided. Alternative solutions are; self-contained composting toilets or portable toilets, disposing of waste in the correct manner on land.



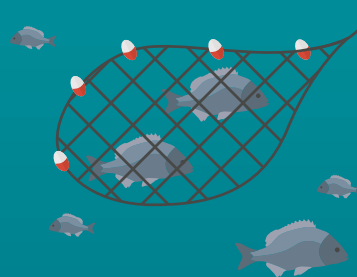
Litter & recycling

Never drop litter or waste in to the sea. Try to remove and recycle litter found in the marine environment. Plastic waste is a growing concern for both marine organisms, and those who eat them.



Fish responsibly

Always return undersized fish. Never take more fish than you, or your family can consume. Dispatch all fish quickly and humanely. Always follow local byelaws and national regulations. And remember, dragging your anchor can cause damage to the seabed.



Invasive non-native species

Boat users can unknowingly transport species which are not native to our waters, these invasive species often change the local natural habitat. Take some time to learn how to identify and remove invasive species.

Oil and fuel spillages

Fuel and oils create a toxic film which can suffocate aquatic plants and animals. Check before pumping your bilge. Install a filter and put a bilge sock in to mop up spills. Report any spills immediately.



Protected habitats

Use designated slipways, launching and landing spots to protect shoreline habitats, nesting and feeding birds. Use mooring buoys instead of anchors where possible. Fragile sponges and soft corals are found throughout Sussex. The sea grass beds in Chichester are internationally protected.



Ghost gear & recycling

If it is safe, release any trapped wildlife and remove the gear from the water or shoreline and dispose of in litter bins when on land. Do not discard old fishing gear in to the sea. An estimated 640,000 tonnes are left in oceans EVERY YEAR.