

INFORMATION TO FISHERS

Fisheries Regulations for Bass (*Dicentrarchus labrax*) within Chichester Harbour

1. Bass Nursery Areas

Under The Bass (Specified Areas) (Prohibition of Fishing) (Variation) Order 1999.

Fishing for bass, or fishing for any fish using sand-eels as bait, by any fishing boat within any part of the harbour as defined, is prohibited between 30th April and 1st November.

Definition of Area: All tidal waters enclosed by a line drawn 192° true from Eastoke Point to Chichester Bar Beacon then 078° true to Cakeham Tower.

2. Minimum size:

Under EU Council Regulation 2019/1241

The prescribed minimum size for bass is 42 cm in length

3. Netting regulations:

The following Sussex IFCA Byelaw regulations apply:

- No person shall place or use any fixed engine other than fyke nets between the 1st day of May and the 30th day of September both days inclusive north of a line drawn across the entrance to Chichester Harbour from East Head (50 degrees 47.3 mins.N. 000 degrees 54.6 mins.W.) to Sandy Point (50 degrees 47.2 mins.N. 000 degrees 56.1.mins.W.)
- No person shall place or maintain any fixed engine across or partly across any channel or creek north of a line drawn across the entrance to Chichester Harbour from East Head (50 degrees 47.3 mins.N. 000 degrees 54.6 mins.W.) to Sandy Point (50 degrees 47.2 mins.N. 000 degrees 56.1.mins.W.) between the commencement of the last hour before low water and the expiration of the first hour after low water and in the case of any channel or creek or part thereof which becomes dry at low water, during the period between the commencement of the last hour before the tide leaves the channels or creeks or part thereof and the expiration of the first hour after the tide had begun to re-enter the same, between the 1st day of October and the 30th day of April of the following year, both days inclusive.



Inshore Fisheries and
Conservation Authority

It should be noted that these summarised regulations may be subject to change.

For additional information please contact your local Sussex IFCA Fisheries Officer or the Chief Fisheries & Conservation Authority Officer.

Sussex Inshore Fisheries and Conservation Authority
12a Riverside Business Centre
Brighton Road
Shoreham-by-Sea
West Sussex
BN43 6RE

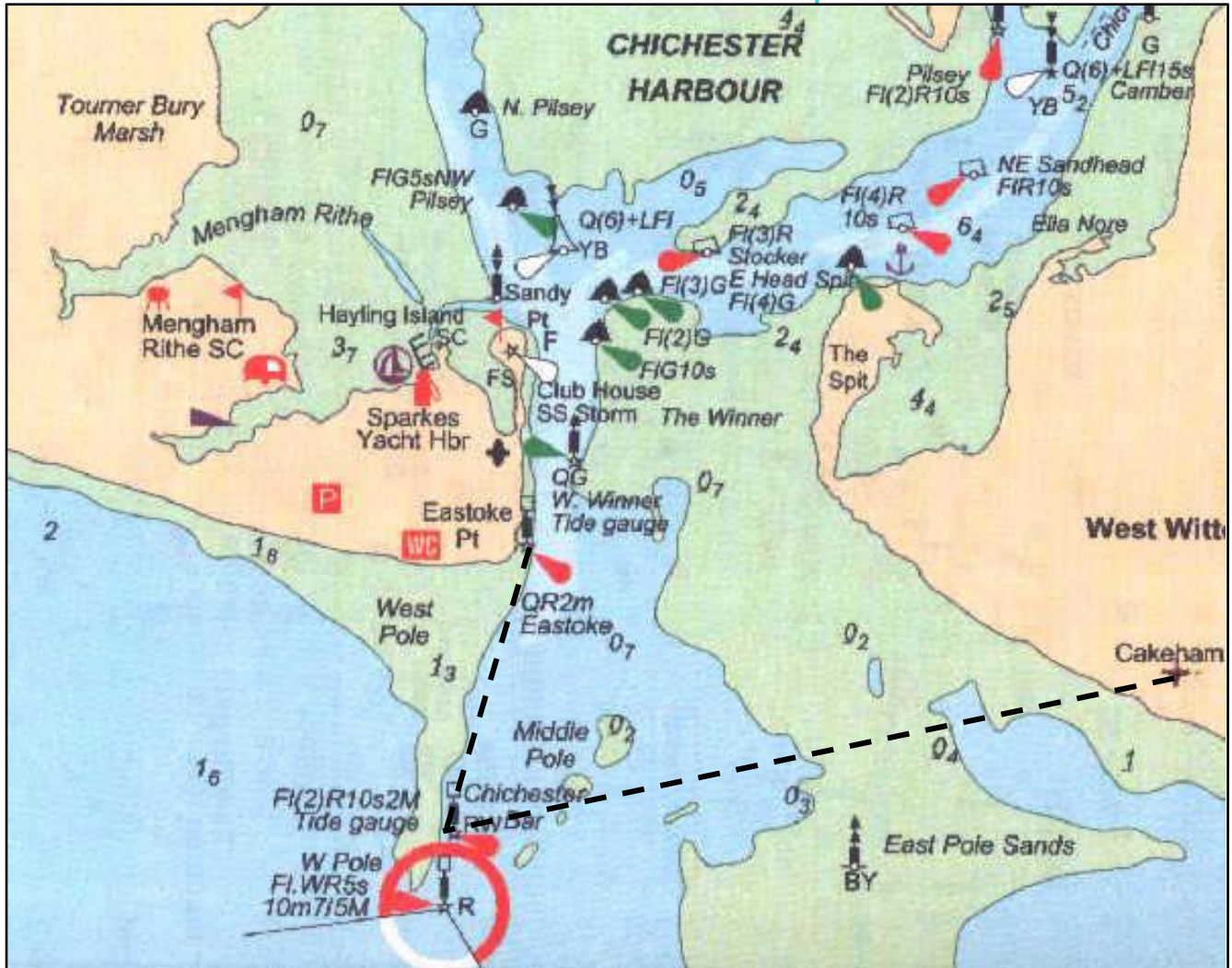
Definition of Area:

All tidal waters enclosed by a line drawn

192° true from Eastoke Point to Chichester Bar Beacon then
078° true to Cakeham Tower
(denoted by the hatched black line on the chartlet below).



Inshore Fisheries and
Conservation Authority



It should be noted that these summarised regulations may be subject to change.

For additional information please contact your local Sussex IFCA Fisheries Officer or the Chief Fisheries & Conservation Authority Officer.

Sussex Inshore Fisheries and Conservation Authority
12a Riverside Business Centre
Brighton Road
Shoreham-by-Sea
West Sussex
BN43 6RE.