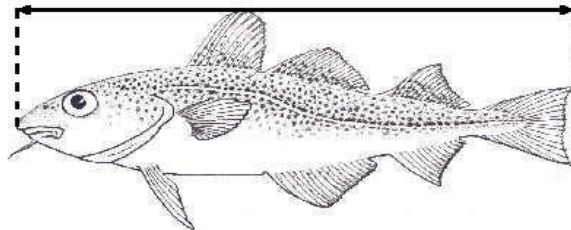
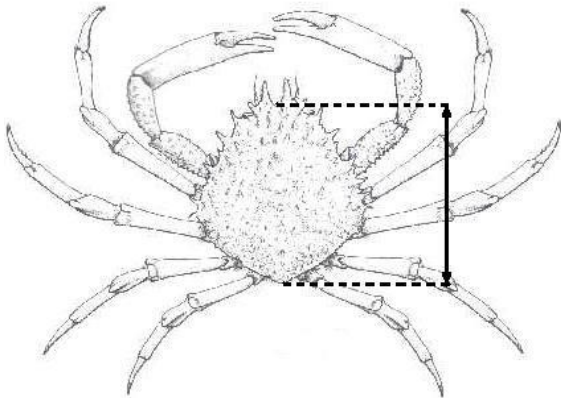
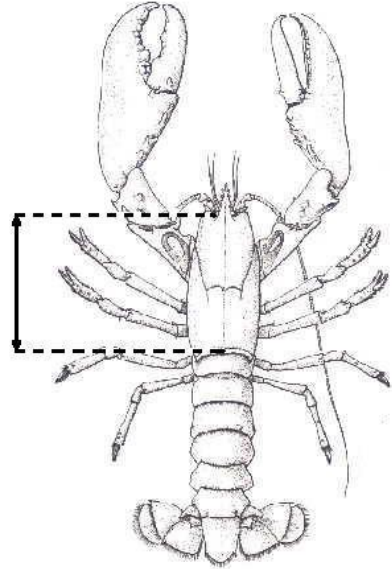
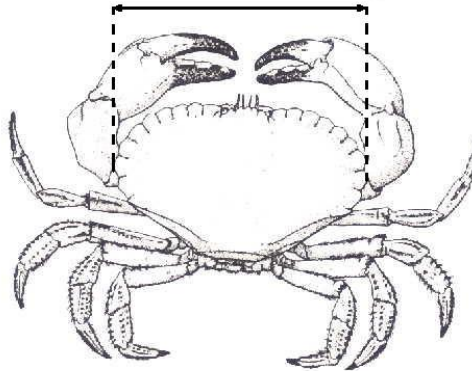
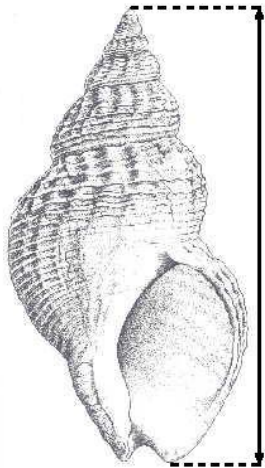


INFORMATION TO FISHERS

This notice is intended to provide information on the method of measurement of finfish, crustacea and molluscs within the Sussex Inshore Fisheries and Conservation Authority.



For additional information please contact your local Sussex IFCA Fisheries and Conservation Officer,
or the Chief Fisheries and Conservation Officer at:

Sussex Inshore Fisheries and Conservation Authority
Unit 12A Riverside Business Centre, Brighton Road, Shoreham-by-Sea, West Sussex, BN43 6RE.

Tel: 01273 454407 Fax: 01273 454408

www.sussex-ifca.gov.uk

e-mail: admin@sussex-ifca.gov.uk

Notice issued: April 2011



INFORMATION TO FISHERS

The following minimum conservation reference sizes for finfish, crustacea and mollusc species currently apply within the Sussex Inshore Fisheries and Conservation Authority. Variations in size regulations may exist with respect to species captured outside Sea Area ICES Division VIId, which are then transported into the District. The minimum conservation reference sizes are also subject to exceptions for commercial fishermen as dictated by the regulations within the Landing Obligation (Regulation (EU) No 1380/2013 of the European Parliament and of the Council of 11 December 2013 on the Common Fisheries Policy). The minimum conservation reference sizes do not apply to recreational fishermen within the Sussex IFCA district.

Unless specified all measurements apply to the dimension of length. Additional information regarding the method of measurement for fish, crustacea and molluscs should be referred to if necessary.

Finfish:

COD	35 cm	POLLACK	30 cm
WHITING	27 cm	HERRING	20 cm
SAITHE	35 cm	HORSE MACKEREL	15 cm
PLAICE	27 cm	HAKE	27 cm
DOVER SOLE	24 cm	MEGRIM	20 cm
BASS	42 cm	LING	63 cm
SARDINE	11 cm	MACKEREL	20 cm

Crustacea:

LOBSTER	<i>(Homarus gammarus)</i>	87 mm	carapace length
EDIBLE CRAB	<i>(Cancer pagurus)</i>	140 mm	carapace width
VELVET CRAB	<i>(Necora puber)</i>	65 mm	carapace width
SPIDER CRAB	<i>(Maia squinado)</i>	130 mm (males) 120 mm (females)	carapace length carapace length
CRAWFISH	<i>(Palinurus spp.)</i>	95 mm	carapace length

Molluscs:

QUEEN SCALLOP	<i>(Chlamys spp)</i>	40 mm	shell width
KING SCALLOP	<i>(Pecten maximus)</i>	110 mm	shell width
WHELK	<i>(Buccinum undatum)</i>	45 mm	shell length
RAZOR CLAM	<i>(Ensis spp)</i>	10 cm	shell length
OYSTER (native)	<i>(Ostrea edulis)</i>	7 cm	*

* The shell must be unable to pass through a circular ring with a 70 mm internal diameter

It should be noted that these summarised regulations may be subject to change.
For additional information please contact your local Sussex IFCA Fisheries and Conservation Officer,
or the Chief Fisheries and Conservation Officer at:

Sussex Inshore Fisheries and Conservation Authority
Unit 12A Riverside Business Centre, Brighton Road, Shoreham-by-Sea, West Sussex, BN43 6RE.

Tel: 01273 454407 Fax: 01273 454408

Notice issued: October 2019

