

## Selsey Bill and the Hounds MCZ



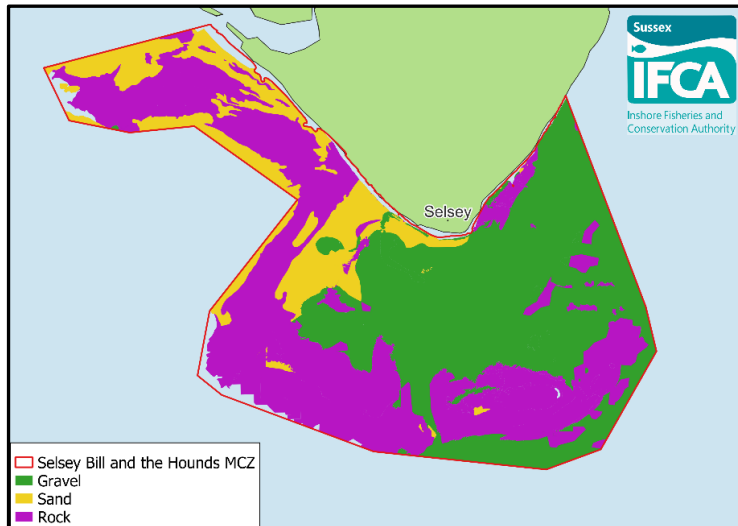
### Voluntary Code of Conduct

The following proposed Fisheries Code of Conduct for Selsey Bill and the Hounds MCZ has been developed by Sussex IFCA to support the site's regulatory regime and help achieve the best conservation outcomes for the site.

#### Anchoring

- Use methods that minimise damage to sensitive areas. Best practice to avoid anchoring over rocky reef (see map below), consider drifting where practicable, or if necessary, use a lower impact anchor.

*Purpose: To minimise rocky reef damage*



#### Seahorses

- Return seahorses directly if caught.
- Report catch information to Sussex Biodiversity Records Centre (location, species, and photograph).
- Avoid areas of high seahorse bycatch.

*Purpose: To promote reporting of sightings to help build a better understanding of the presence and distribution of this protected feature, their habitat use, and their interaction with fishing gear, as well as reducing potential impacts.*

For further information on Selsey Bill and the Hounds MCZ please see: [Selsey Bill and the Hounds MCZ \(sussex-ifca.gov.uk\)](https://sussex-ifca.gov.uk)

Cover photo: © Big Wave Productions photo taken by Andy Jackson



# SELSEY BILL AND THE HOUNDS MARINE CONSERVATION ZONE

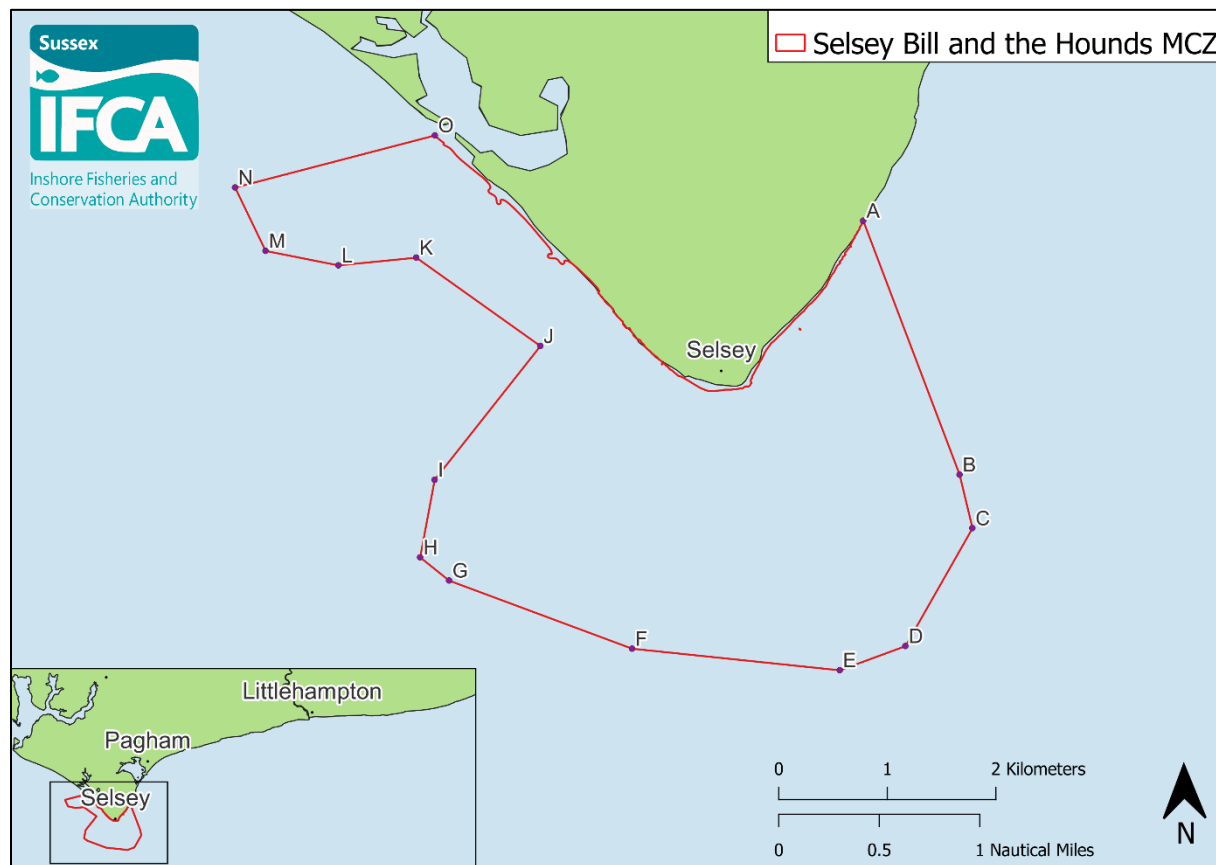
## Fisheries Management Measures Summary

A protected area in Selsey - West Sussex

**Selsey Bill and the Hounds** is a small inshore Marine Conservation Zone that was designated on the 31<sup>st</sup> of May 2019. It is located near the town of Selsey in West Sussex and has an area of around 16 km<sup>2</sup>. The landward boundary is at Mean Low Water and the site adjoins the Bracklesham Bay Site of Special Scientific Interest.

Selsey Bill and the Hounds is known for its high biodiversity and species richness, which is supported by a variety of habitats, ranging from rocky habitats to soft sandy sediments. The site also includes geological structures known locally as “The Hounds” which consists of limestone and clay exposures.

Selsey Bill and the Hounds holds one of the best examples of peat and clay exposures in the southeast of the country. Within the southeast of the site is the Mixon Hole, a dramatic 20 m drop in the seafloor exposing clay cliffs capped with limestone. This feature supports a rich diversity of habitats and species and has been classed as a marine Site of Nature Conservation Importance by West Sussex County Council. The site has also been identified as a key habitat for short snouted seahorses (*Hippocampus hippocampus*).



### MCZ Boundary

Point	Latitude	Longitude	Point	Latitude	Longitude
A	50° 44.16' N	0° 46.20' W	I	50° 42.90' N	0° 49.59' W
B	50° 42.89' N	0° 45.48' W	J	50° 43.56' N	0° 48.75' W
C	50° 42.62' N	0° 45.39' W	K	50° 44.01' N	0° 49.71' W
D	50° 42.04' N	0° 45.93' W	L	50° 43.98' N	0° 50.32' W
E	50° 41.92' N	0° 46.45' W	M	50° 44.05' N	0° 50.89' W
F	50° 42.05' N	0° 48.07' W	N	50° 44.37' N	0° 51.12' W
G	50° 42.40' N	0° 49.49' W	O	50° 44.61' N	0° 49.55' W
H	50° 42.52' N	0° 49.72' W			

### Nearshore Trawling Byelaw

In recognition of the potential pressures of bottom towed fishing gear on low, moderate, and high energy infralittoral rock, moderate energy circalittoral rock, peat and clay exposures and the Bracklesham Bay geological features, Sussex IFCA encompassed Selsey Bill and the Hounds MCZ in its entirety within its Nearshore Trawling Byelaw. The Nearshore Trawling Byelaw was approved in March 2021 and prohibits towed gear throughout the site.