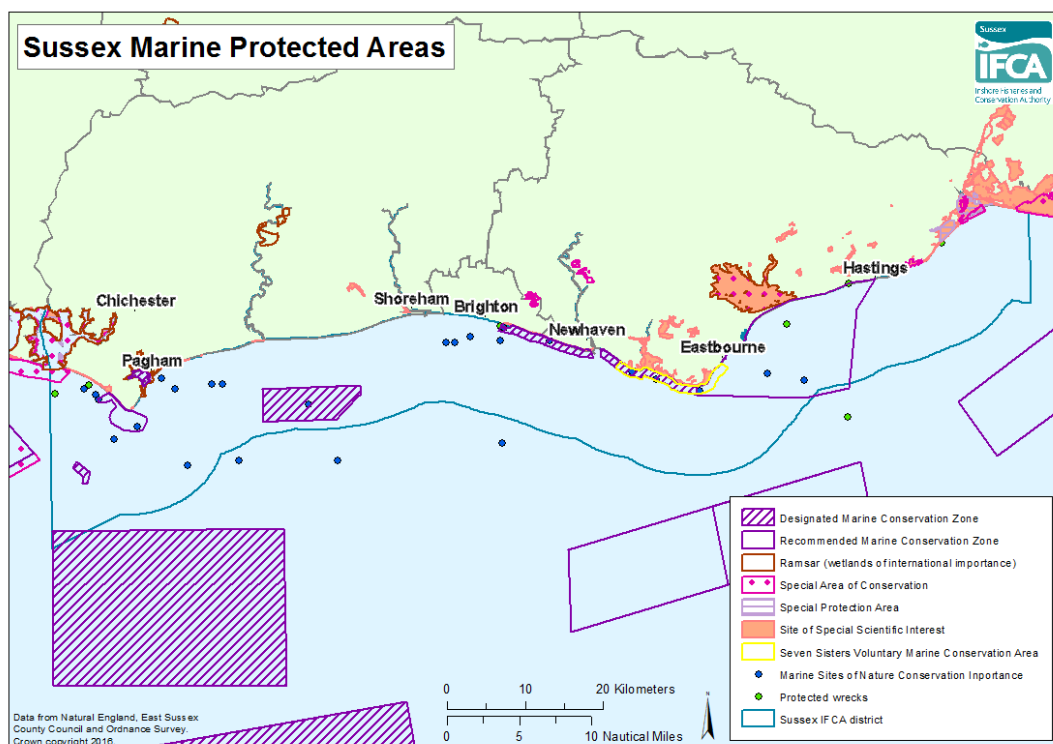


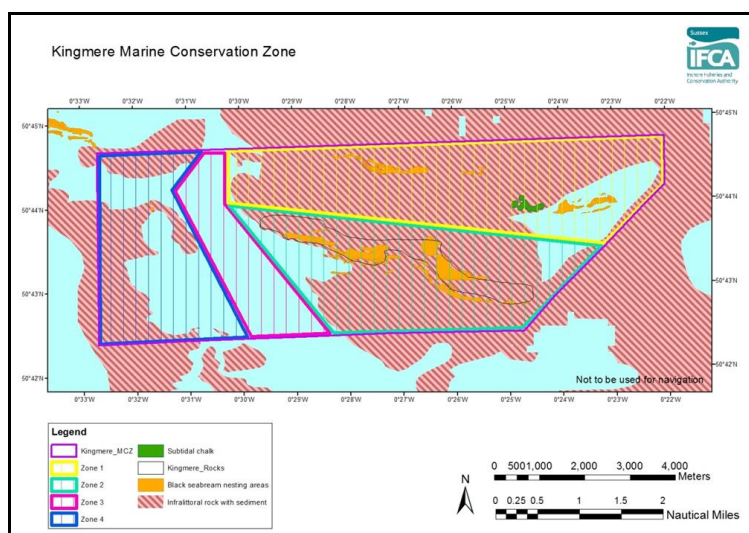
## Recreational Sea Angling (RSA) Information on Marine Protected Areas (MPAs)

### How were potential sites selected?

Recommendations on where Marine Conservation Zones (MCZs) should be sited involved consulting a range of sea users and interest groups in four different regional projects around England. After over 2 years of discussion, the regional projects submitted their recommendations for MCZ sites to government advisory bodies in September 2011. In total 127 rMCZs in English territorial waters and offshore waters off Wales and Northern Ireland were recommended, 5 sites have been designated in the Sussex IFCA district and more are awaiting designation.



### Kingmere MCZ



Kingmere MCZ is located approx. 4-5nm south off Littlehampton it is an important regional location for breeding Black Bream (*Spondyllosoma cantharus*). It contains diverse rocky reef (Kingmere Rocks) and the best exposures of chalk cliffs in Sussex (Worthing Lumps). Zones have been created within the MCZ to allow regulated fishing activities. Click link for more info.

<http://www.sussex-ifca.gov.uk/kingmere-mcz>

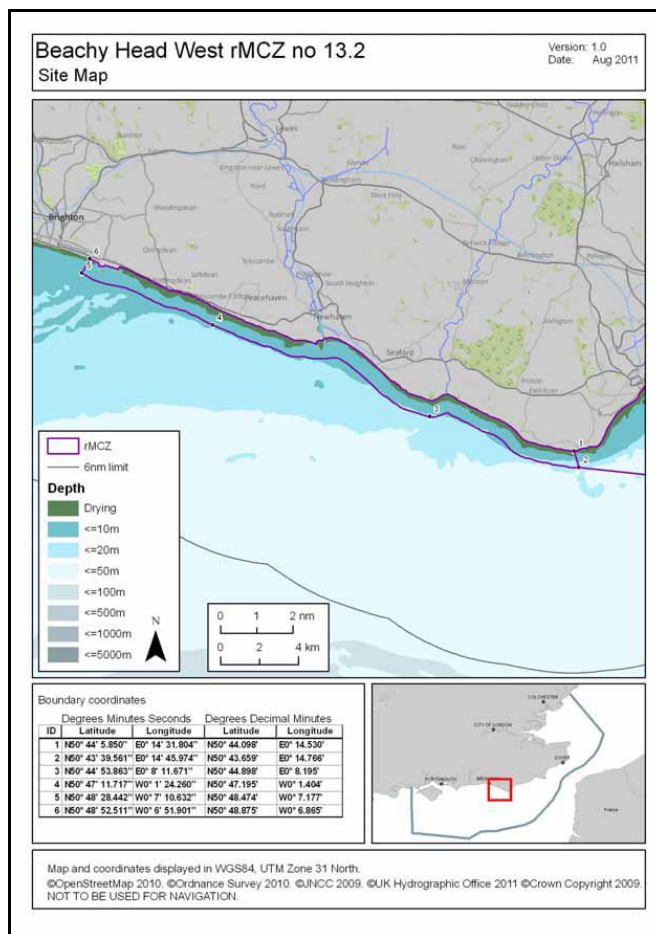
<https://secure.toolkitfiles.co.uk/clients/34087/sitedata/files/Kingmere-Regulatory-Notice.pdf>

## Beachy Head West MCZ.

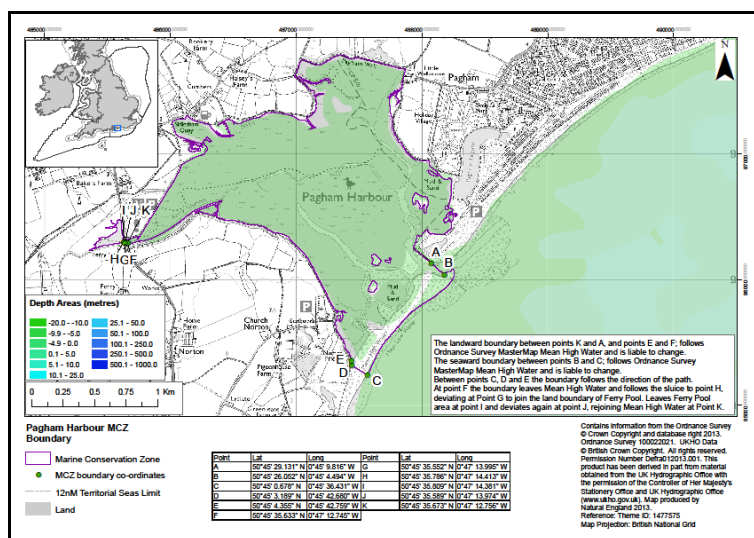
These sites contain some of the best examples of chalk habitat in the south east region. Here the chalk reefs and gullies support specialised communities of animals and seaweeds. Additionally, the sites are known to support the rare short-snouted seahorse. Management relating to this site include a prohibition on trawling, no netting or lining from the shore and restrictions on hand gathering. For further info see link below.

<https://www.gov.uk/government/publications/marine-conservation-zone-2013-designation-beachy-head-west>

<http://www.sussex-ifca.gov.uk/beachy-head-west-mcz>



## Pagham Harbour MCZ



Pagham MCZ is a small inshore site measuring 3 km<sup>2</sup>, located between Bognor Regis and Chichester in West Sussex. This naturally occurring harbour is a tidal inlet which is fronted by two dynamic shingle spits. The MCZ site offers specific protection to two different species and one habitat type. The environment within Ferry Pool lagoon supports the rare lagoon sand shrimp and Defolin's lagoon snail both are protected by this site.

<https://www.gov.uk/government/publications/marine-conservation-zone-2013-designation-pagham-harbour>

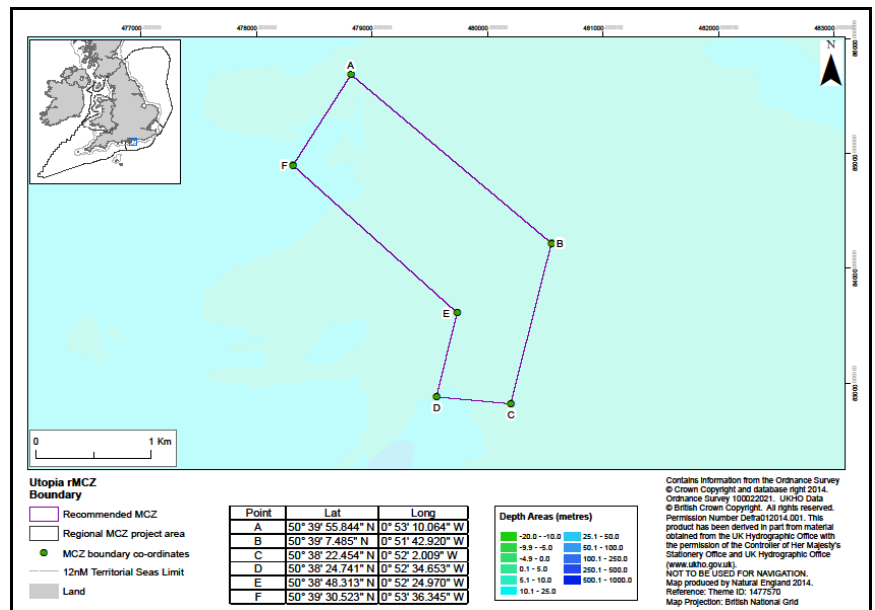
<http://www.sussex-ifca.gov.uk/pagham-harbour-mcz-and-spa>

## Utopia MCZ

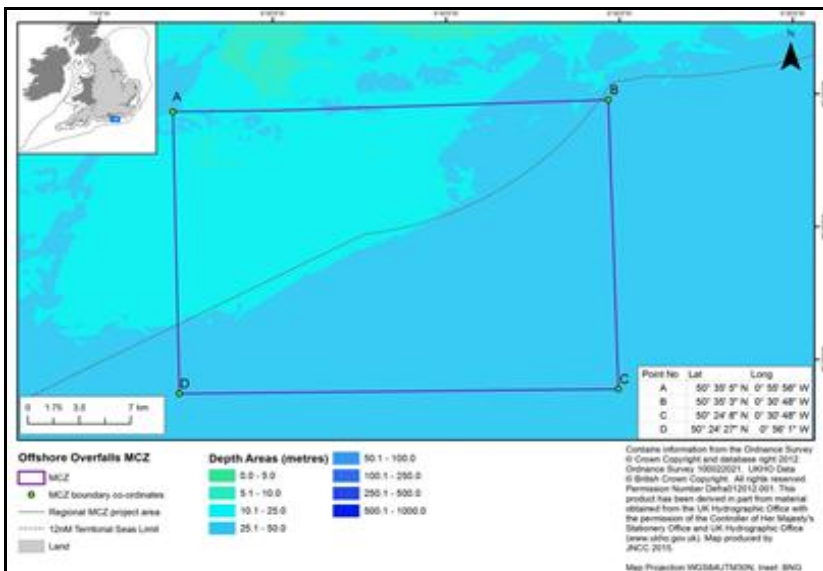
Utopia MZC is a small inshore site located 20km east of the Isle of Wight, covering an area of just under 3km<sup>2</sup>. The Utopia reef consists of an outcrop of rock with large boulders, creating a reef-like feature that sticks up from the surrounding sediments east of Bembridge and south-west of Selsey. This rocky reef supports rich communities of sponges and anthozoans. For further info see links below:

<http://www.sussex-ifca.gov.uk/utopia-mcz>

[https://www.gov.uk/government/uploads/system/uploads/attachment\\_data/file/492467/mcz-utopia-factsheet.pdf](https://www.gov.uk/government/uploads/system/uploads/attachment_data/file/492467/mcz-utopia-factsheet.pdf)



## Offshore Overfalls



This is an offshore site located roughly 18km east of the southern part of the Isle of Wight, crossing both the inshore and offshore boundaries and covering an area of 594 km<sup>2</sup>. This has been highlighted as an area of high scientific value due to the unusual area of mixed sediment, sand and gravel banks which are relict glacial deposits. These are important for a range of fish species such as bass, turbot and brill, cod, rays (specifically blonde rays), tope, brown crab and sandeels.

<http://www.sussex-ifca.gov.uk/offshore-overfall-mcz>

<https://www.gov.uk/government/publications/marine-conservation-zones-offshore-overfalls>

Further details on the recently designated MCZ sites are available at the following links:

Defra MPA information

<https://www.gov.uk/government/policies/protecting-and-sustainably-using-the-marine-environment/supporting-pages/marine-protected-areas>