

## Additional Information

For those looking to **collect bait** or **hand gather** sea fisheries resources in this area, please be aware that Sussex IFCA's Hand Gathering Byelaw 2023 applies.

### Specific provisions apply to Beachy Head East

- You may not use or deposit marine organism aggregation devices (such as crab tiles) in the MCZ.
- It is prohibited to remove from the shore from any part of Beachy Head East MCZ in a single calendar day, more than:
  - 20 crabs in total of any species other than edible crab (*Cancer pagurus*)
  - 1 kilogramme of mollusc shellfish except blue mussels (*Mytilus edulis*)
  - 1 kilogramme of marine worms (*Annelida*)
  - or 2 kilogrammes of intertidal seaweed (*algae*)

**You should familiarise yourself fully with the byelaw before collecting any fisheries resource, it is available from the Sussex IFCA's webpage:**  
[www.sussex-ifca.gov.uk/regulations#hand-gathering](http://www.sussex-ifca.gov.uk/regulations#hand-gathering)

If you are **fishing** or **gathering shellfish** within the Marine Conservation Zone, you should be aware that minimum conservation reference sizes apply across the Sussex IFCA district for a range of common fish and shellfish.

**It is an offence to retain fish or shellfish below these specified size limits. The list of minimum sizes is provided within the Minimum Size Byelaw 2021 available at:** [www.sussex-ifca.gov.uk/regulations#min-size](http://www.sussex-ifca.gov.uk/regulations#min-size)

### General Advice and Guidance

When undertaking any activity within the Marine Conservation Zone, please be conscious of the protected species and habitats within the site and act responsibly to prevent harm or damage.

**Further information on the MCZ, including a factsheet and map of protected features, is available here:** [www.gov.uk/government/publications/marine-conservation-zones-beachy-head-east](http://www.gov.uk/government/publications/marine-conservation-zones-beachy-head-east)

# BEACHY HEAD EAST

## Marine Conservation Zone

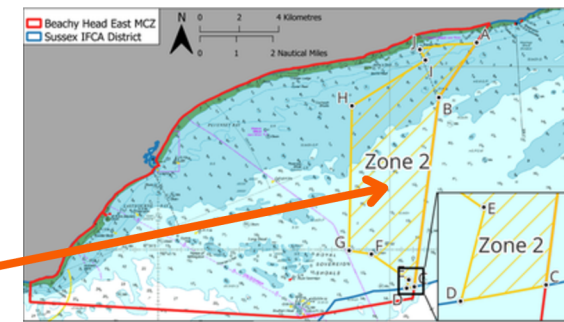
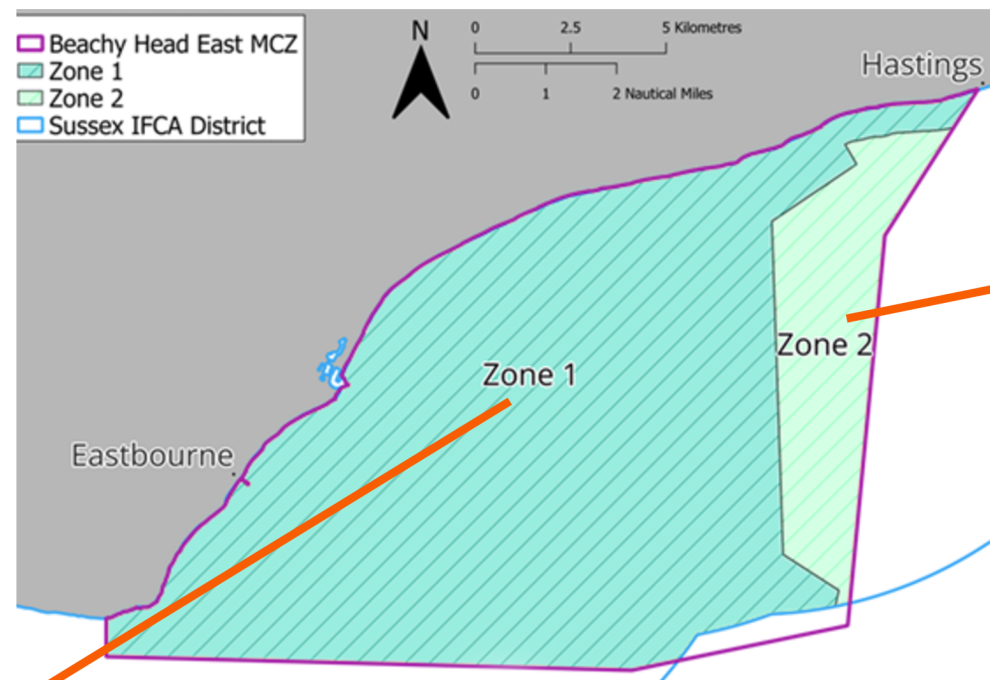


## Fisheries Management Measures Summary

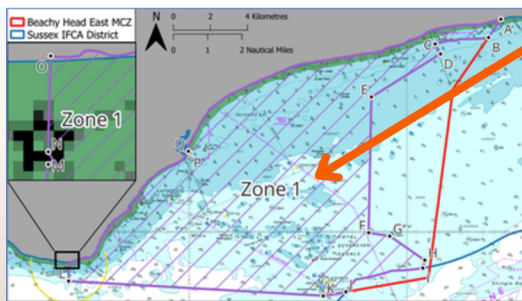


**Beachy Head East MCZ** is part of a national network of Marine Protected Areas around the UK. The inshore site 195 km<sup>2</sup> and is located off the East Sussex coast, in the Eastern Channel region between Hastings and Beachy Head, Eastbourne. It was designated as a Marine Conservation Zone in May 2019 to protect important marine habitats and species.

Sussex IFCA's fisheries management approach seeks to minimise interactions between fishing activities and the features likely to be harmed, in order to achieve the conservation objectives of the site while minimising disruption to important local fisheries. Protected features within the site include subtidal chalk, littoral chalk communities, ross worm reefs (*Saballaria spinulosa*), short-snouted seahorse (*Hippocampus hippocampus*) and high and moderate energy circalittoral rock.



Co-ordinate	Latitude		Longitude		
A	50°	50.65'	N 0°	33.74'	E
B	50°	49.15'	N 0°	32.11'	E
C	50°	43.98'	N 0°	31.05'	E
D	50°	43.94'	N 0°	30.72'	E
E	50°	44.17'	N 0°	30.81'	E
F	50°	44.70'	N 0°	29.60'	E
G	50°	49.41'	N 0°	29.60'	E
H	50°	50.17'	N 0°	31.53'	E
I	50°	50.46'	N 0°	31.29'	E



Co-ordinate	Latitude		Longitude		
A	50°	51.18'	N 0°	34.30'	E
B	50°	50.65'	N 0°	33.74'	E
C	50°	50.46'	N 0°	31.29'	E
D	50°	50.17'	N 0°	31.53'	E
E	50°	49.41'	N 0°	29.60'	E
F	50°	44.70'	N 0°	29.60'	E
G	50°	44.17'	N 0°	30.81'	E
H	50°	43.94'	N 0°	30.72'	E
I	50°	43.25'	N 0°	27.19'	E
J	50°	43.13'	N 0°	26.15'	E
K	50°	43.56'	N 0°	14.47'	E
L	50°	44.02'	N 0°	14.49'	E
M	50°	44.03'	N 0°	14.49'	E
N	50°	44.11'	N 0°	14.49'	E
O	50°	47.30'	N 0°	20.04'	E
P	50°	47.34'	N 0°	19.96'	E

**Zone 1** (164 km<sup>2</sup>) prohibits towed fishing gear to protect sensitive species and habitats.

**Zone 2** (28 km<sup>2</sup>) allows limited access for towed fishing gear where sensitive features are not present.

Low impact fishing techniques including static gear such as nets and pots, and rod and line fishing will continue within the site.

## Beachy Head East MCZ Legal Requirements

Under the Sussex IFCA Marine Protected Area Byelaw and associated Beachy Head East MCZ Schedule, the following activities are prohibited within Beachy Head East MCZ Zone 1:

- Using towed fishing gear (such as a trawls or dredges) at any time.
- Transiting through Zone 1 unless towed fishing gear is fully inboard, lashed and stowed.

## Inspection & Powers

Sussex Inshore Fisheries and Conservation Officers have the legal powers to stop, board and inspect any vessel, and to inspect persons who may have been fishing. Please cooperate and support officers during inspections.

Failure to comply with a reasonable request from an officer during an inspection is an offence.