

Sussex Inshore Fisheries and Conservation Authority
Byelaw guidance for marine fisheries and conservation management



Marine Protected Areas Byelaw 2023

Schedule 5: Beachy Head East Marine Conservation Zone

Introduction

This guidance is intended to provide a summary explanation and description of the regulations defined with the Sussex Inshore Fisheries and Conservation Authority's Marine Protected Areas Byelaw 2023, specifically Schedule 5; relating to Beachy Head East Marine Conservation Zone (MCZ).

The MCZ covers a total area of approximately 195 km². Over 192 km² (98%) lies within the Sussex IFCA District and jurisdiction, this represents 11% of the total area of the Sussex IFCA District.

The guidance does not apply to that part of the Beachy Head East Marine Conservation Zone (less than 3 km²) that lies outside the Sussex IFCA District but within the jurisdiction of the Marine Management Organisation (MMO). Management of this 'offshore' part of the MCZ was under development by the MMO in 2025. For further information refer to: <https://www.gov.uk/guidance/marine-protected-areas-mpas>

This guidance includes:

- Reference to the relevant Marine Conservation Zone Order
- A description of the key byelaw management measures
- Co-ordinates and boundary lines associated with any defined zones
- Graphical representations of zones showing reference points that correspond to the byelaw
- Authority policy on interpretation of definitions where applicable

For the purposes of any clarification and legal interpretation the original byelaw should always be referred to.

Byelaw Summary Explanation

Definitions

The byelaw should be referred to for clarification of the meanings for all terms used; Paragraph 2 of the byelaw provides definitions for terms used in the management measures. It includes the definition of '**towed fishing gear**' as follows:

'towed fishing gear' means any fishing gear designed to be towed, dragged or pushed through the water including: any form of fishing dredge, trawl or part of a trawl including warps, doors, weights or any attachments.

Paragraphs 1 to 7 of the byelaw provide the framework under which the management for specific sites is defined in numbered schedules (e.g. Schedule 5: Beachy Head East MCZ).

Part 1 – Management Measures (Prohibitions)

Protected Area

The byelaw provides details of the relevant Beachy Head East Marine Conservation Zone Designation Order 2019 (Ministerial Order 2019 No.3) that outlines the location and area encompassed by the MCZ.

Towed Fishing Gear

- Fishing with towed gears is prohibited within Zone 1 of the MCZ.
- If transiting through Zone 1, towed fishing gear must be inboard, lashed and stowed.

Part 2 – Co-ordinates of the Marine Conservation Zone and the management zones within the site

The following three figures outline the site boundaries for the MCZ, the Sussex IFCA seaward limit, and the management Zones; Zone 1 (towed gear prohibited), Zone 2 (towed gear not prohibited).

Zone 1 and Zone 2 comprise land and sea areas enclosed within defined boundary lines.

Figures 2. and 3. reference the co-ordinate points determining the Zone boundaries, these co-ordinates are provided in Tables 2. and 4. for each zone.

Boundary line descriptors are supplied in Tables 1. and 3. for each zone.

Figure 1. Beachy Head East MCZ site indicating management Zones 1 and 2. (Note without reference points)

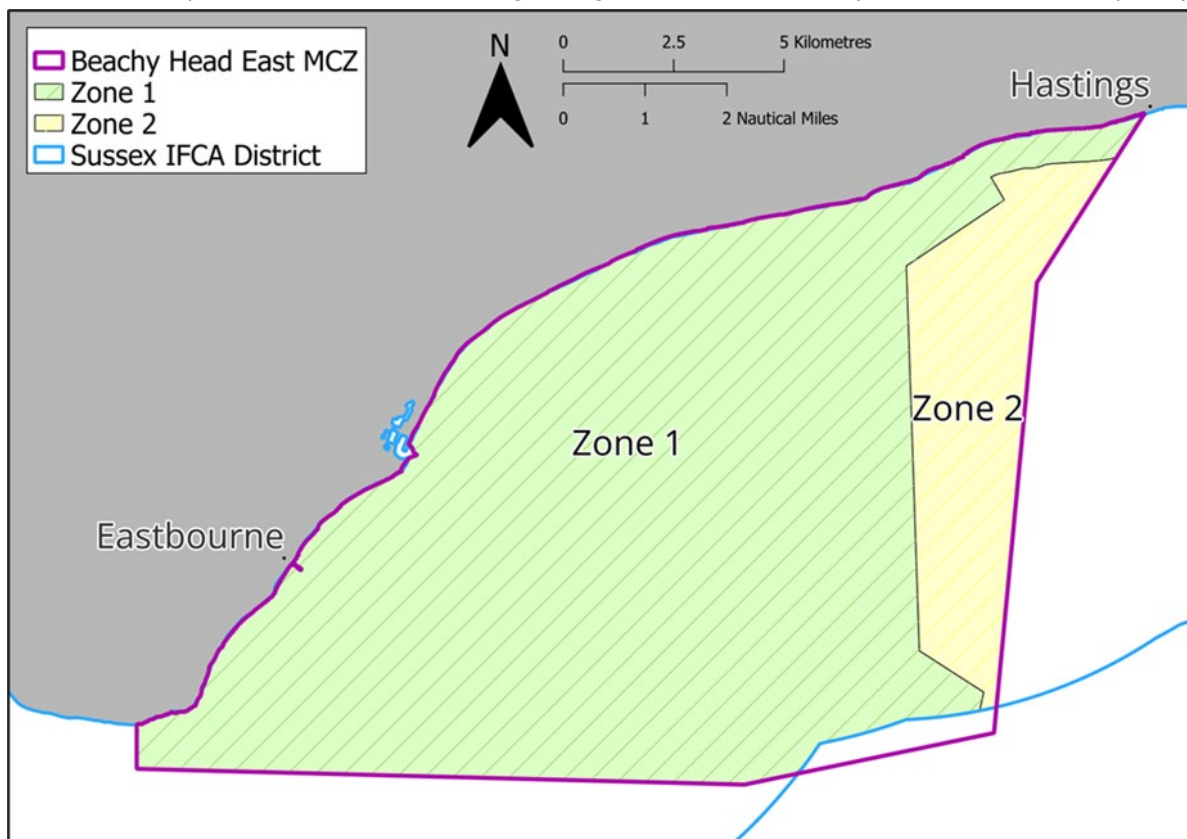


Figure 2. Beachy Head East MCZ site showing boundaries and seaward limit of Sussex IFCA District. Zone 1 (Prohibited for towed gears) boundary line and enclosed area (hatched) in mauve.

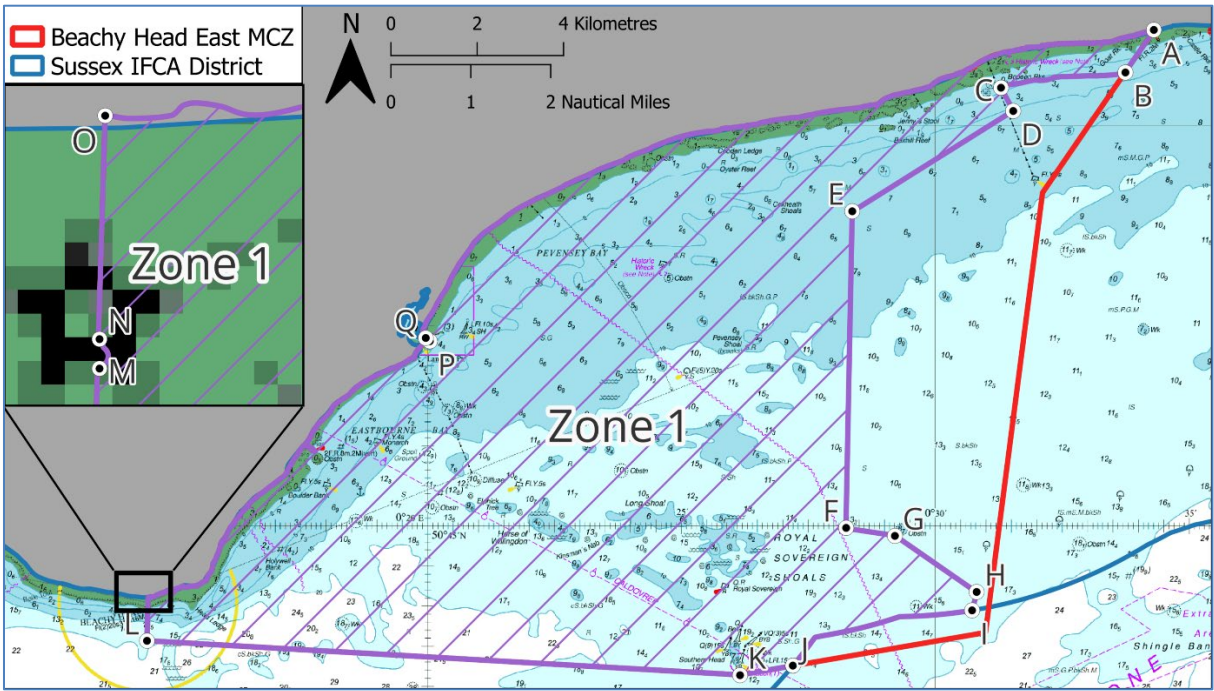


Figure 3. Bechy Head East MCZ site showing boundaries and seaward limit of Sussex IFC District. Zone 2 (not prohibited for towed gears) boundary line and enclosed area (hatched) in yellow.

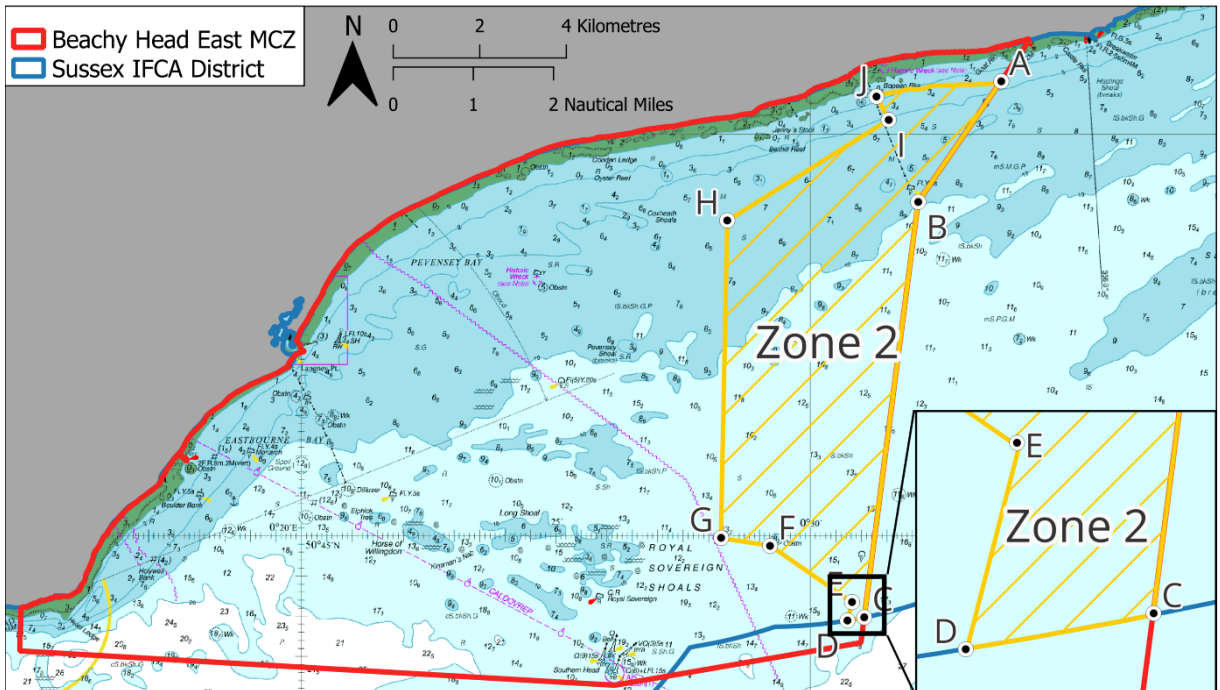


Table 1. Zone 1 – Boundary lines

Boundary line	Set of co-ordinates of points which boundary line joins	Topographical description of boundary line
1.	A, B	Geodesic line
2.	B, C	0.75km from mean high water spring line
3.	C, D	Geodesic line
4.	D, E	Geodesic line
5.	E, F	Geodesic line
6.	F, G	Geodesic line
7.	G, H	Geodesic line
8.	H, I	6 nautical mile limit
9.	I, J	Geodesic line
10.	J, K	Geodesic line
11.	K, L	Geodesic line
12.	L, M	Follows base of Beachy Head Lighthouse
13.	M, N	Geodesic line
14.	N, O	Mean high water line
15.	O, P	Geodesic line
16.	P, A	Mean high water line

Table 2. Zone 1 – Reference Points and Co-ordinates

Co-ordinate	Latitude			Longitude		
A	50°	51.18'	N	0°	34.30'	E
B	50°	50.65'	N	0°	33.74'	E
C	50°	50.46'	N	0°	31.29'	E
D	50°	50.17'	N	0°	31.53'	E
E	50°	49.41'	N	0°	29.60'	E
F	50°	44.70'	N	0°	29.60'	E
G	50°	44.17'	N	0°	30.81'	E
H	50°	43.94'	N	0°	30.72'	E
I	50°	43.25'	N	0°	27.19'	E
J	50°	43.13'	N	0°	26.15'	E
K	50°	43.56'	N	0°	14.47'	E
L	50°	44.02'	N	0°	14.49'	E
M	50°	44.03'	N	0°	14.49'	E
N	50°	44.11'	N	0°	14.49'	E
O	50°	47.30'	N	0°	20.04'	E
P	50°	47.34'	N	0°	19.96'	E

Table 3. Zone 2 – Boundary lines

Boundary line	Set of co-ordinates of points which boundary line joins	Topographical description of boundary line
1.	A, B	Geodesic line
2.	B, C	Geodesic line
3.	C, D	6 nautical mile limit
4.	D, E	Geodesic line
5.	E, F	Geodesic line
6.	F, G	Geodesic line
7.	G, H	Geodesic line
8.	H, I	Geodesic line
9.	I, A	0.75 km from mean high water spring line

Table 4. Zone 2 – Reference Points and Co-ordinates

Co-ordinate	Latitude			Longitude		
A	50°	50.65'	N	0°	33.74'	E
B	50°	49.15'	N	0°	32.11'	E
C	50°	43.98'	N	0°	31.05'	E
D	50°	43.94'	N	0°	30.72'	E
E	50°	44.17'	N	0°	30.81'	E
F	50°	44.70'	N	0°	29.60'	E
G	50°	49.41'	N	0°	29.60'	E
H	50°	50.17'	N	0°	31.53'	E
I	50°	50.46'	N	0°	31.29'	E

List of Protected MPA Features

Protected feature

High energy circalittoral rock
 Moderate energy circalittoral rock
 Subtidal coarse sediment
 Subtidal sand
 Peat and clay exposures
 Subtidal chalk
 Littoral chalk communities
 Ross worm reefs (*Saballeria spinulosa*)
 Short-snouted seahorse (*Hippocampus hippocampus*)

Type of feature

Marine habitat
 Marine habitat
 Marine habitat
 Marine habitat
 Marine habitat
 Marine habitat
 Marine habitat
 Marine species
 Marine species

Notifying the Authority if you witness illegal activity

Help us protect the MCZ and ensure compliance with the byelaw.

What can I do?

If you see what you believe is illegal activity taking place -

- Make a written record what you see (simple notes are good)
- Take a photograph if you can
- If relevant, obtain a position of the vessel and your vessel's position (e.g. observed vessel was approx. 200 metres to the south of our position at Lat/Long)
- Submit the information at our dedicated reporting page: <https://www.sussex-ifca.gov.uk/report-illegal-fishing>

Contact Details

Address: 12a Riverside Business Centre, Brighton Road, Shoreham-by-Sea, West Sussex BN43 6RE

Email: admin@sussex-ifca.gov.uk

Web: www.sussex-ifca.gov.uk

Tel: 01273 454407

Information on offences and penalties

It is the responsibility of those fishing for both commercial and recreational purposes within any marine conservation zone to ensure that any fishing activity complies with Sussex IFCA MPA Byelaw.

It is an offence not to comply with any reasonable request made by an Inshore Fisheries & Conservation Officer whilst conducting their duties. This includes; facilitating the boarding and inspection of any vessel engaged in fishing, and inspection of vehicles and equipment associated with fishing activities.

The maximum penalty for non-compliance of a byelaw is a fine not exceeding £50,000. Breaches of any byelaw condition can be subject to an Administrative Penalty sanction according to a standard scale.

Fishing equipment may be immediately seized.

Date of guidance: April 2026