



NEW  
FOR HER

NEW  
FOR HIM



ALIEN  
F U S I O N

MUGLER

#WeAreAllAlien

MUGLER ALIEN | B SITES | v3

# 1. HEATHROW T4 | B SITE



Box construction finished in Gloss white.



Doublesided Glorifier with tester



Updateable Duratran image.

Cut out aperture with dummy product on shelving. Fixed within recess to prevent damage.

Product stock shelving

MUGLER



## 2. HEATHROW T5 | B SITE



## 2. HEATHROW T5 | B SITE | DIMENSIONS



SIDE



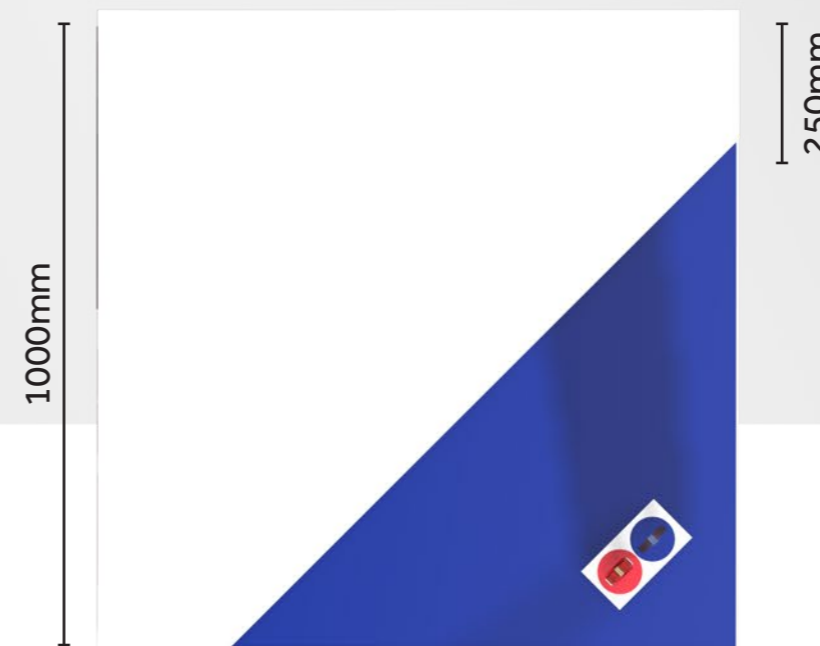
REAR



FRONT



SIDE



PLAN

MUGLER



### 3. GATWICK SOUTH | B SITE | DIMENSIONS



REAR

1200mm



2400mm

SIDE

1200mm



FRONT

400mm



SIDE



PLAN

MUGLER

# 4. GATWICK NORTH | B SITE



Box construction finished in Gloss white.



Doublesided Glorifier with tester



Updateable Duratran image.

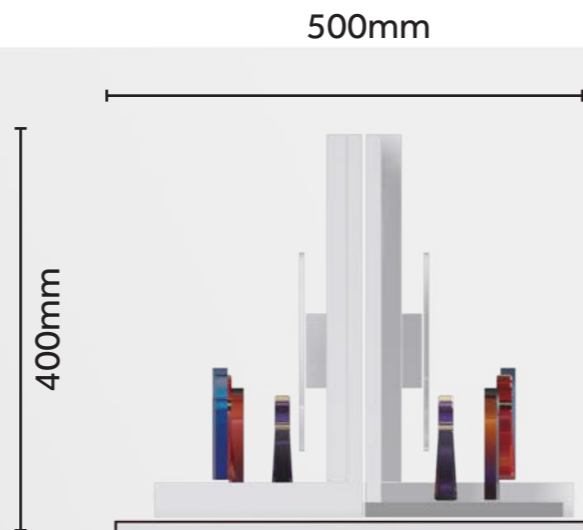
Cut out aperture with dummy product on shelving. Fixed within recess to prevent damage.

Product stock shelving

MUGLER



# 4. GATWICK NORTH | B SITE | DIMENSIONS



FRONT



SIDE



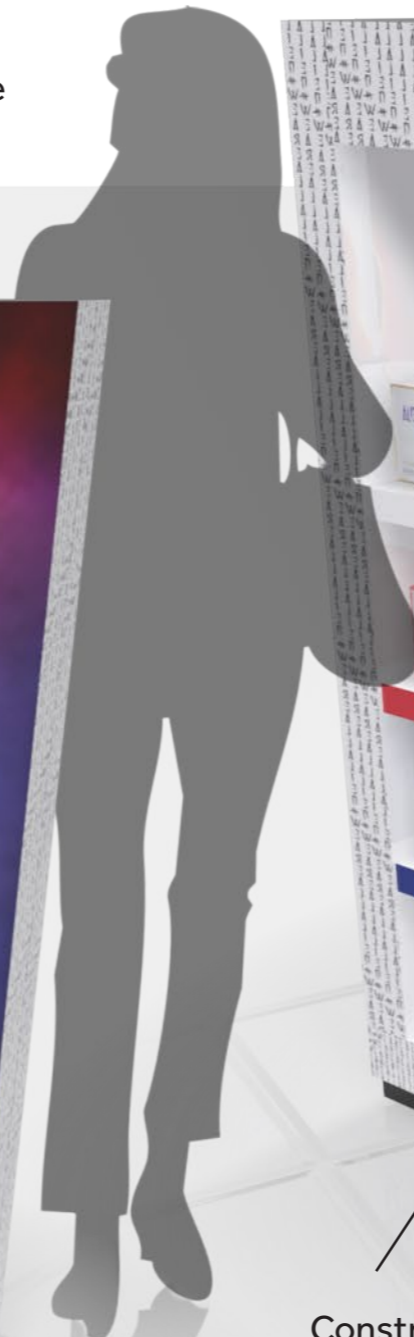
REAR



SIDE

# 5. STANSTED | B SITE

Illuminated Duratran image  
1300 mm x 1300 mm



Stock shelving with Product tester unit

Illuminated Duratran image  
400 mm x 1200 mm

Constructed frame finished in Gloss white

PMS 286C

Glorifier Tester podium finished in white with coloured disc plates and branding.

Tester unit with product highlighters.



Shelf edger with white Mugler logo.

MUGLER

# 5. STANSTED | B SITE | DIMENSIONS



SIDE



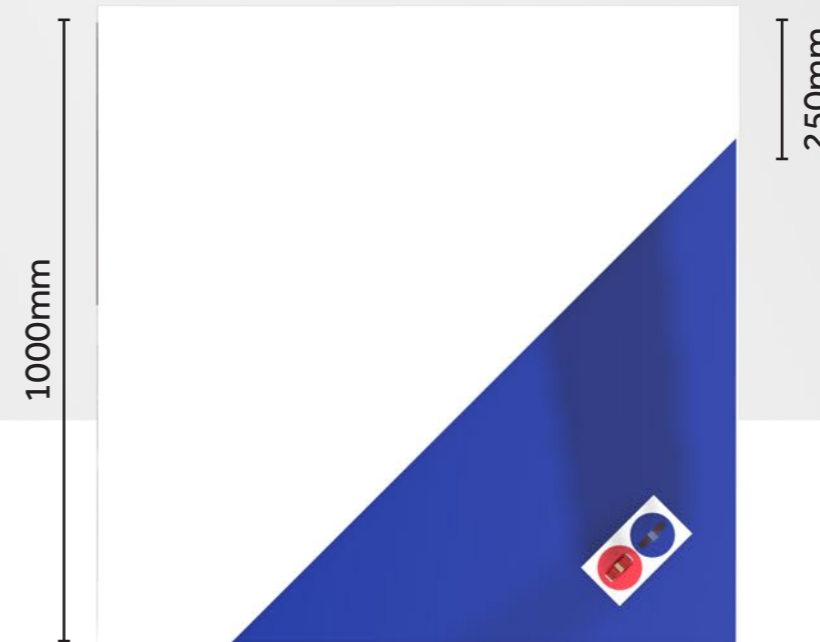
REAR



FRONT



SIDE

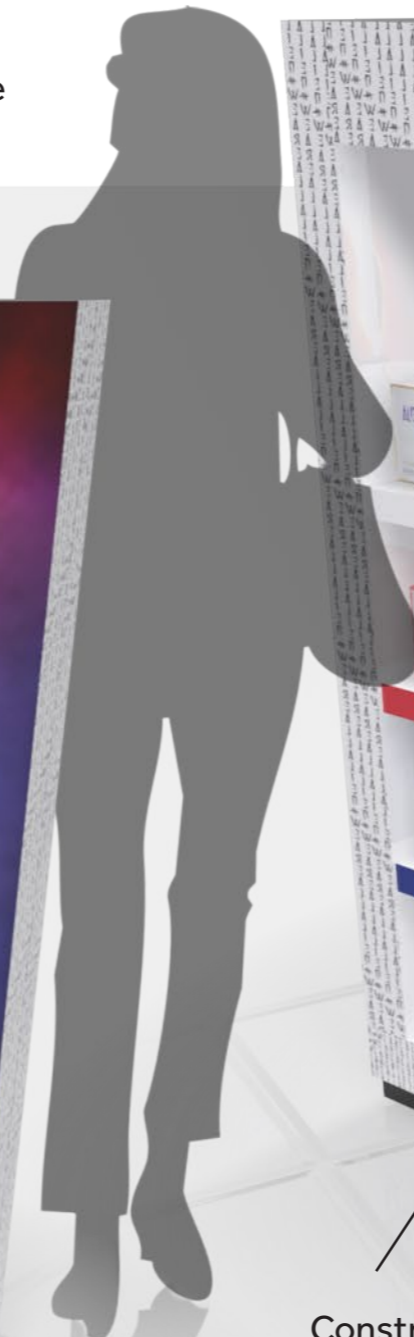


PLAN

MUGLER

# 6. EDINBURGH | B SITE

Illuminated Duratran image  
1300 mm x 1300 mm



Stock shelving  
with Product  
tester unit

Illuminated Duratran  
image  
400 mm x 1200 mm

Constructed frame  
finished in Gloss white

PMS  
286C

Tester unit with product  
highlighters.

Glorifier Tester podium  
finished in white with  
coloured disc plates and  
branding.



Shelf edger with white  
Mugler logo.

MUGLER

# 6. EDINBURGH | B SITE | DIMENSIONS



SIDE



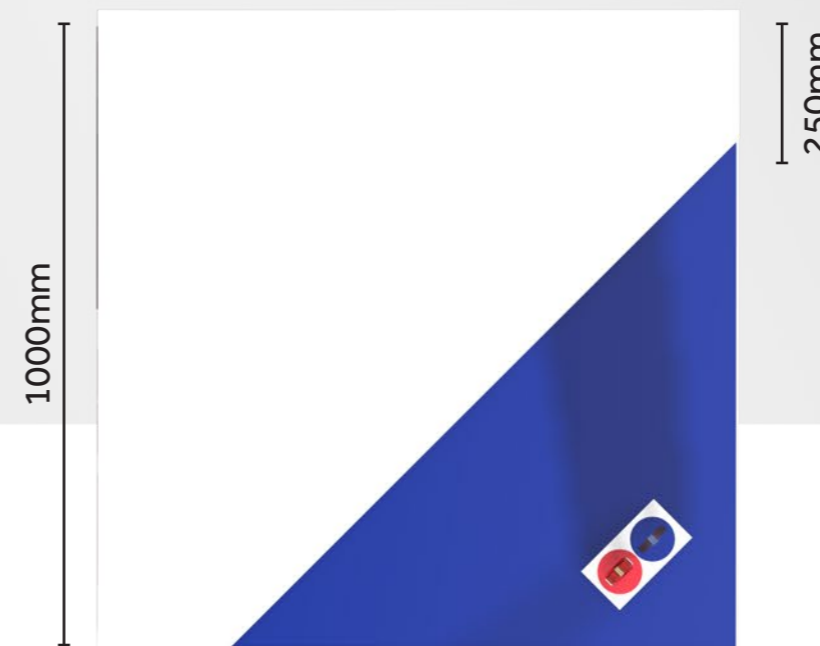
REAR



FRONT



SIDE



PLAN

MUGLER

# 7. GLASGOW | B SITE

Illuminated Duratran image

Stock shelving with Product tester unit

Tester unit with cut out eclipse tester product.

Constructed frame finished in Gloss white.

Image with logo.

# MUGLER



# 7. GLASGOW | B SITE | DIMENSIONS



MUGLER

PLAN

# 8. BRISTOL | B SITE

Column Wrap  
2 x Printed Foamex  
Panels with 50 mm  
overlap.  
2310 mm x 970 mm



Doublesided  
Glorifier with  
tester and foil  
monolith.



Box construction  
finished in Gloss white.

Updateable  
Duratran  
image.

Column Wrap



# MUGLER



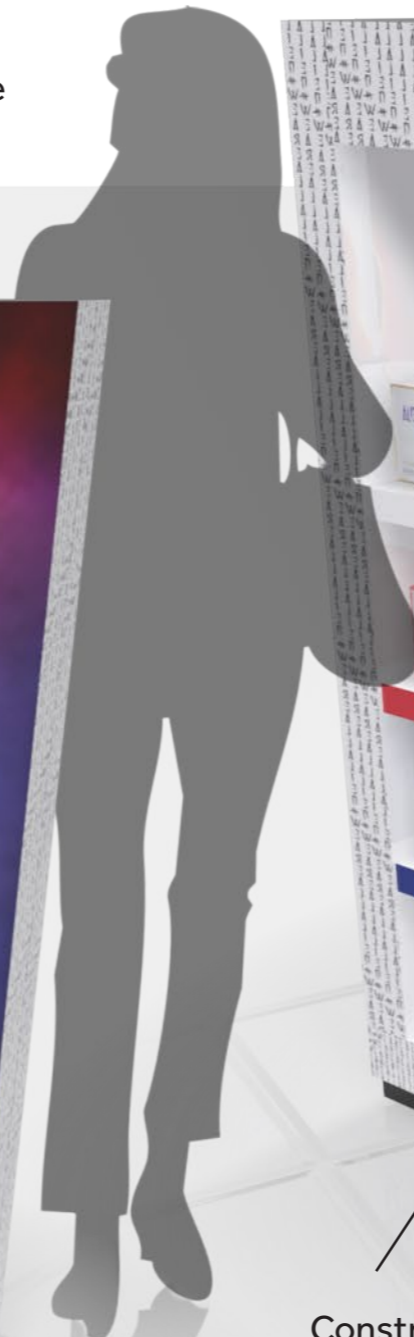
# 8. BRISTOL | B SITE | DIMENSIONS



MUGLER

# 9. BIRMINGHAM | B SITE

Illuminated Duratran image  
1300 mm x 1300 mm



Stock shelving with Product tester unit

Illuminated Duratran image  
400 mm x 1200 mm

Constructed frame finished in Gloss white

PMS 286C

Glorifier Tester podium finished in white with coloured disc plates and branding.

Tester unit with product highlighters.



Shelf edger with white Mugler logo.

MUGLER

# 9. BIRMINGHAM | B SITE | DIMENSIONS



SIDE



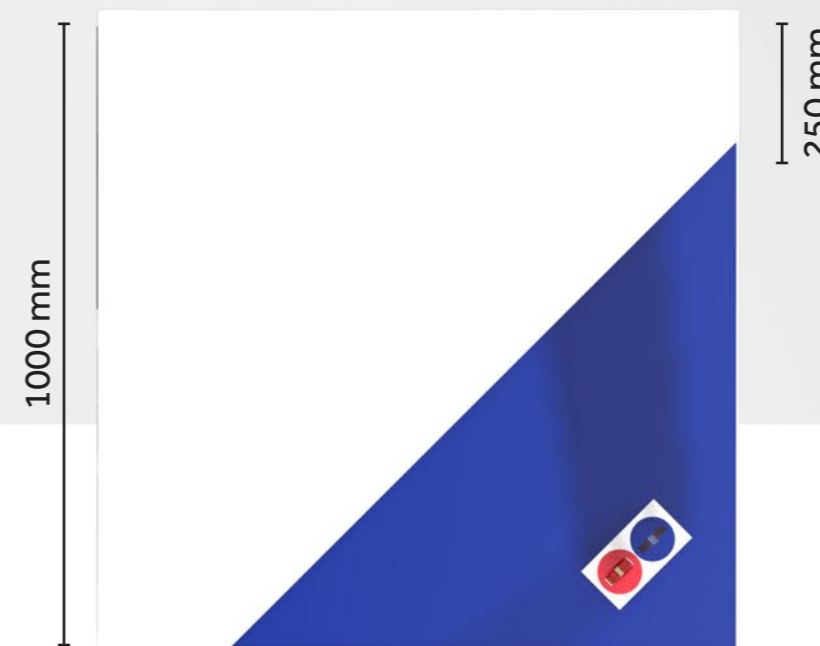
REAR



FRONT



SIDE



PLAN

MUGLER

# 10. LIVERPOOL | B SITE



Box construction finished in Gloss white.



Doublesided Glorifier with tester



Updateable Duratran image.

Cut out aperture with dummy product on shelving. Fixed within recess to prevent damage.

Product stock shelving

MUGLER





# 11. MANCHESTER T1 | B SITE | DIMENSIONS

1500mm



REAR

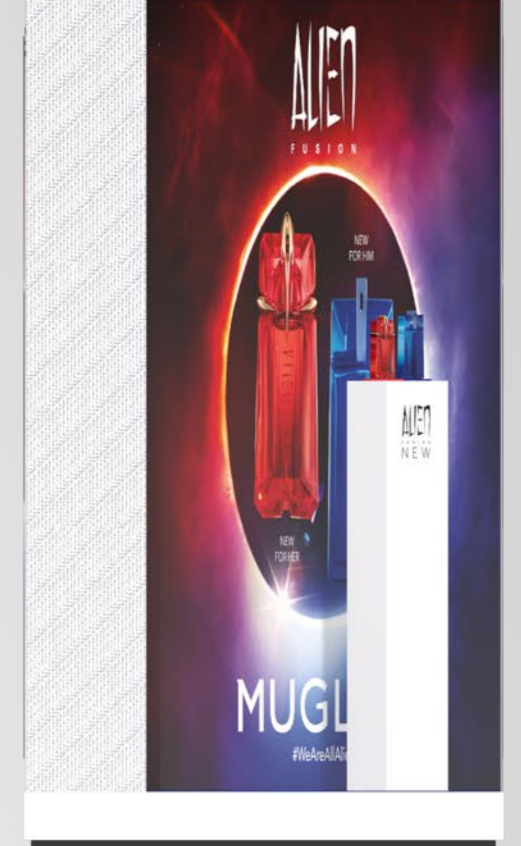


SIDE

1400 mm

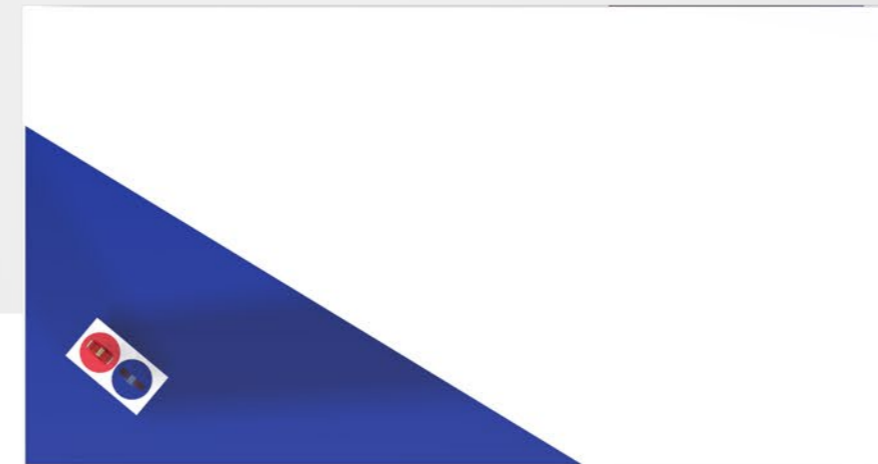


FRONT



SIDE

250mm



PLAN

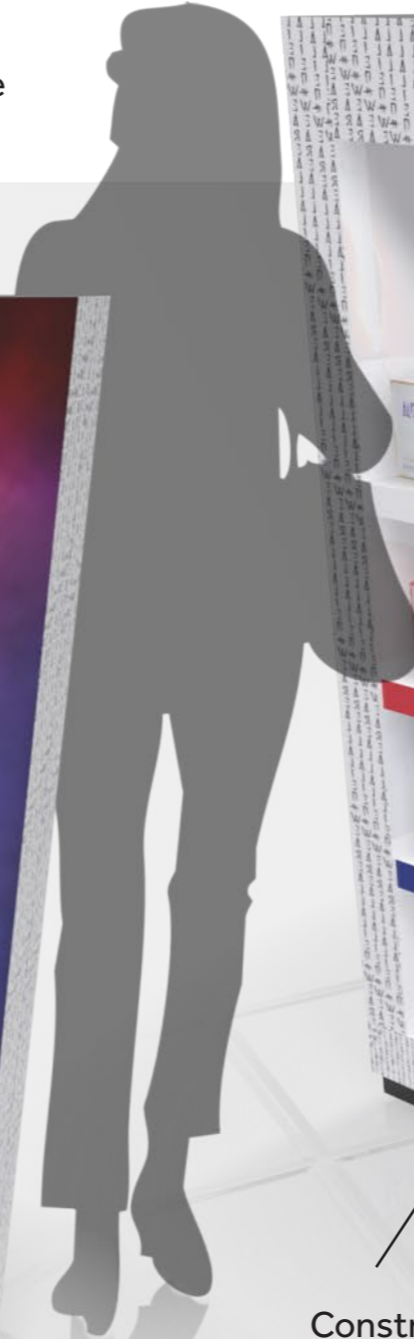
800mm

500mm

# MUGLER

# 12. MANCHESTER T2 | B SITE

Illuminated Duratran image  
1300 mm x 1300 mm



Stock shelving with Product tester unit

Illuminated Duratran image  
400 mm x 1200 mm

Constructed frame finished in Gloss white

PMS 286C

Glorifier Tester podium finished in white with coloured disc plates and branding.

Tester unit with product highlighters.



Shelf edger with white Mugler logo.

MUGLER



# 12. MANCHESTER T2 | B SITE | DIMENSIONS



SIDE



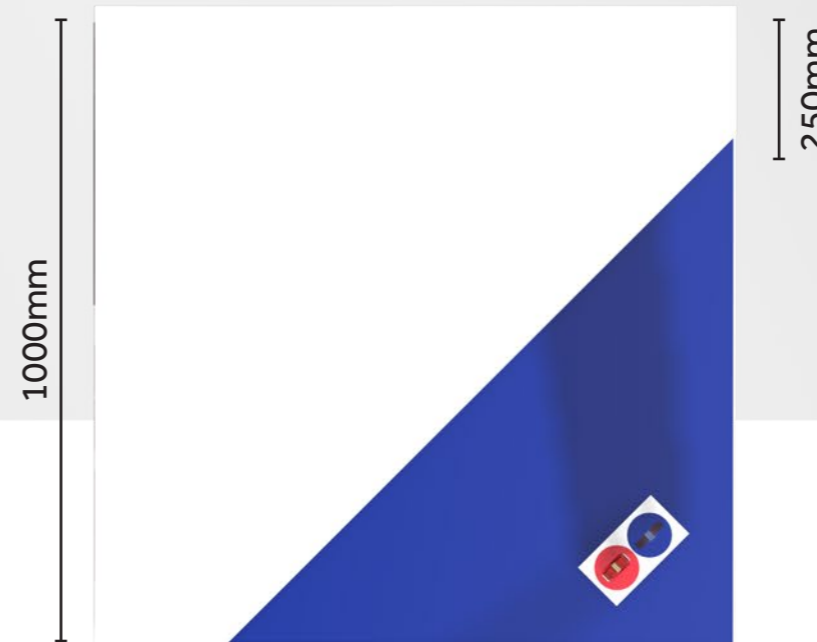
REAR



FRONT



SIDE



PLAN

MUGLER

# 13. NEWCASTLE | B SITE



Box construction finished in Gloss white.



Doublesided Glorifier with tester



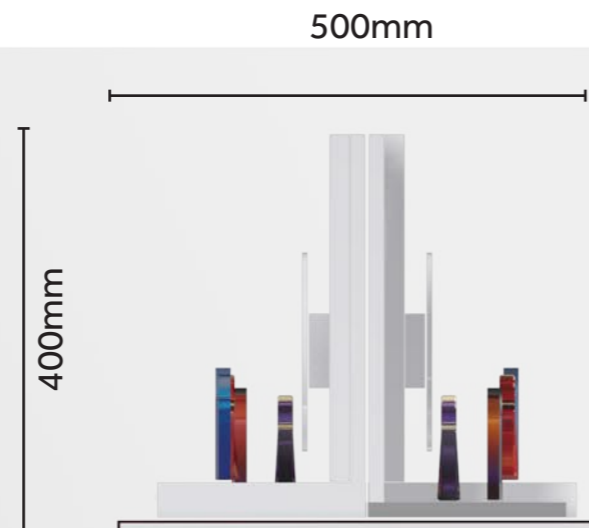
Updateable Duratran image.

Cut out aperture with dummy product on shelving. Fixed within recess to prevent damage.

Product stock shelving

MUGLER

# 13. NEWCASTLE | B SITE | DIMENSIONS



FRONT



SIDE



REAR



SIDE

# 14. EAST MIDLANDS | B SITE



Rear View with large Lightbox image 580 mm x 1845 mm

3 x Lightbox image 580 mm x 980 mm

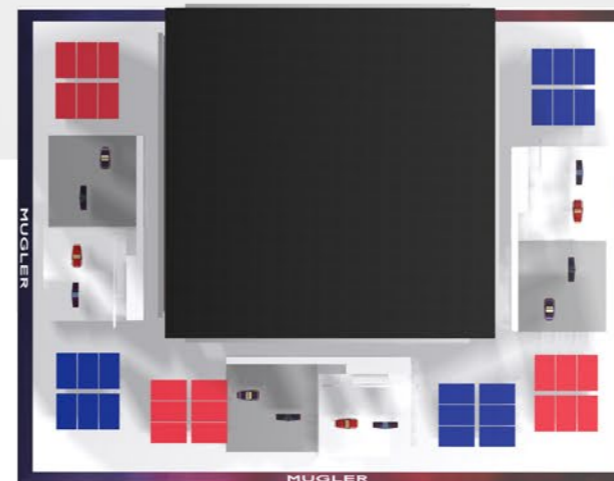
Product glorifier / tester

Branded shelf

New Dawn image with branding.

MUGLER

# 14. EAST MIDLANDS | B SITE | DIMENSIONS



1290mm

990mm

3000mm

MUGLER

# 15. CARDIFF | B SITE

3 x Header graphic panels  
380 mm x 630 mm

Branded shelving  
with product tester  
and stepped off  
disc.



Branded shelving  
with product tester  
unit



3 x Base graphic panels  
580 mm x 630 mm

Rear View showing  
full size lightbox  
900 mm x 1980 mm

# MUGLER

# 15. CARDIFF | B SITE | DIMENSIONS



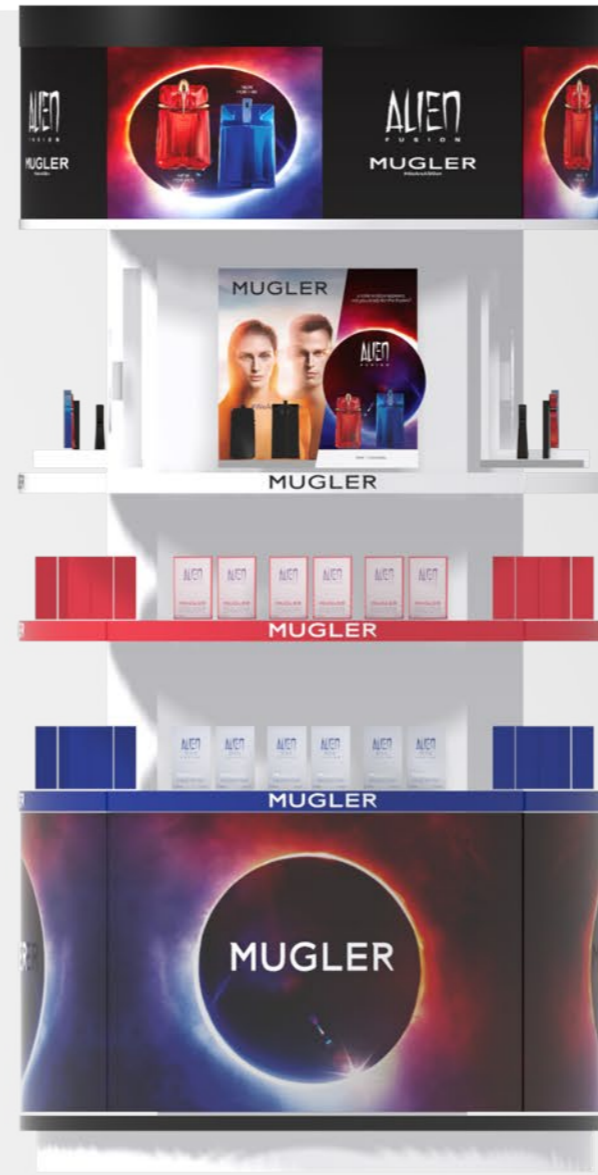
REAR

1200mm



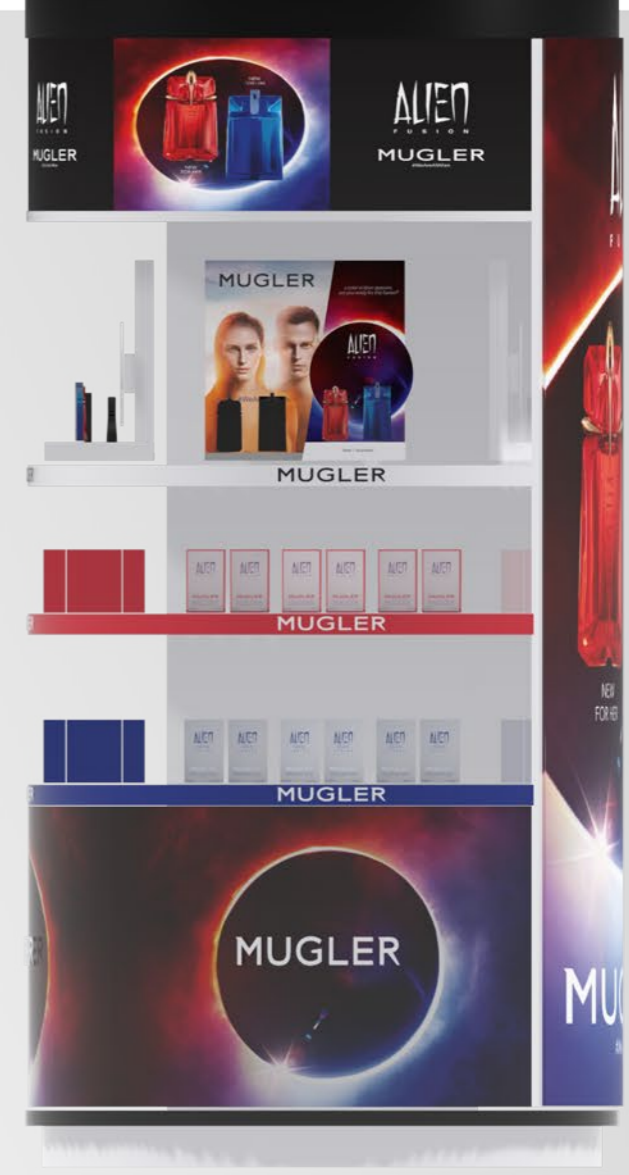
SIDE

1200mm

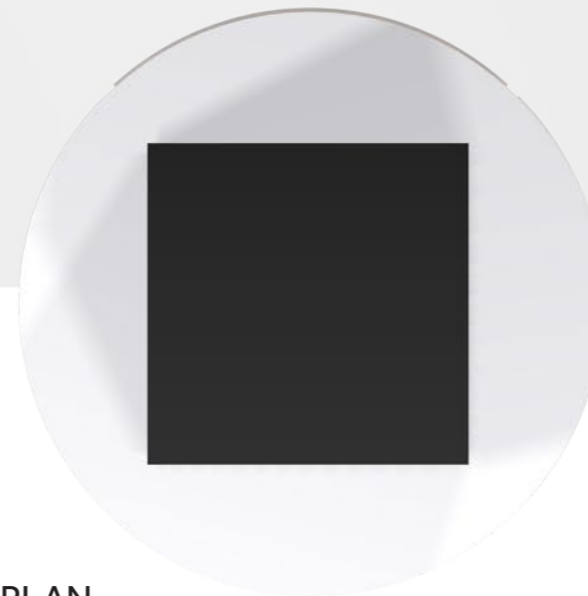


FRONT

2100 mm



SIDE



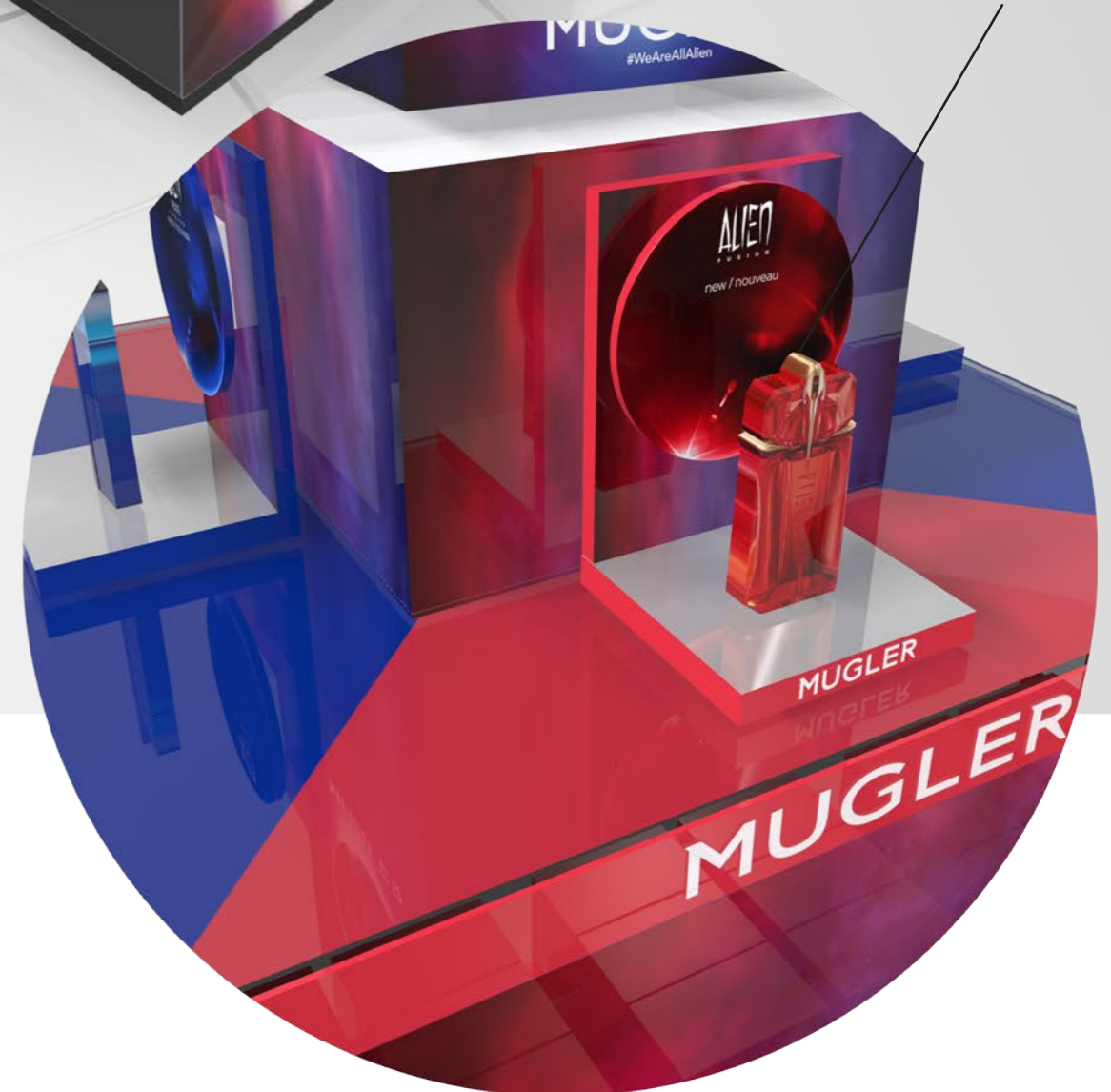
PLAN

# MUGLER

# 16. HEATHROW T3 | B SITE



Small product glorifier.



MUGLER



# 15. HEATHROW T3 | B SITE | DIMENSIONS



MALE SIDE

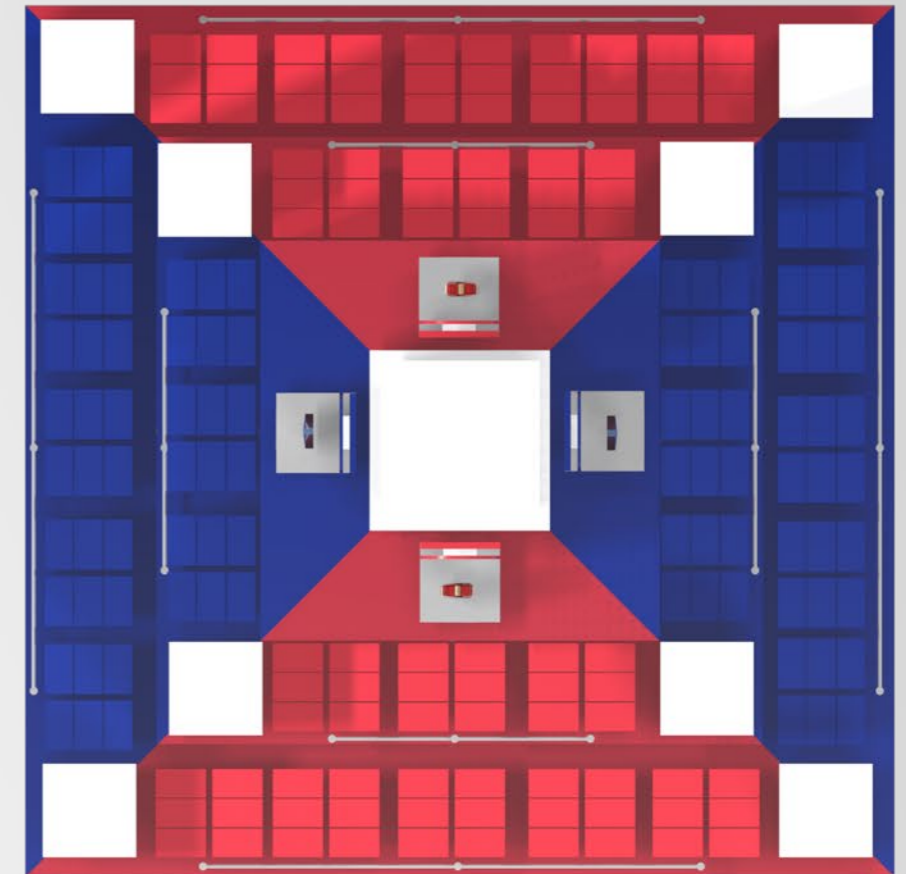
1305 mm



FEMALE SIDE

1305 mm

1600 mm



PLAN

1305 mm

# MUGLER