

Free Spirit Story

February 2017

The Free Spirit Story begins.....A hard copy is made to ensure a match with the bronze maquette. A resin copy of the maquette is cast. The resin model is compared to the maquette to ensure the angles and altitudes are correct.



March 2017

The steel is delivered in 7.5 metre lengths. The "dolly" is made. The dolly is the steel base for the making of the sculpture but will not be cast. The dolly is on castors and it is an essential element that must be strong enough to manage the weight of the armature and the clay



April 2017

The dolly is covered with ply which has a grid drawn on to it. The grid is a scaled version of the maquette grid. It means three points of reference can be obtained to plot the armature. A laser level is used to provide correct horizontal and vertical axis. The armature is the equivalent of a skeletal support so has to be central in position. Each point is cross referenced to check proportions are correct.



Free Spirit Story

Once the armature is complete it is clad in preparation for the clay. The images shows plaster and scrim on a steel armature. The plaster has been coated with shellac to prevent the plaster drawing moisture from the clay. The tail is plotted next in aluminium wire. Once this is completed the armature is ready for the clay. The clay is delivered. Each packet weighs 25kg - a total of half a tonne in this delivery

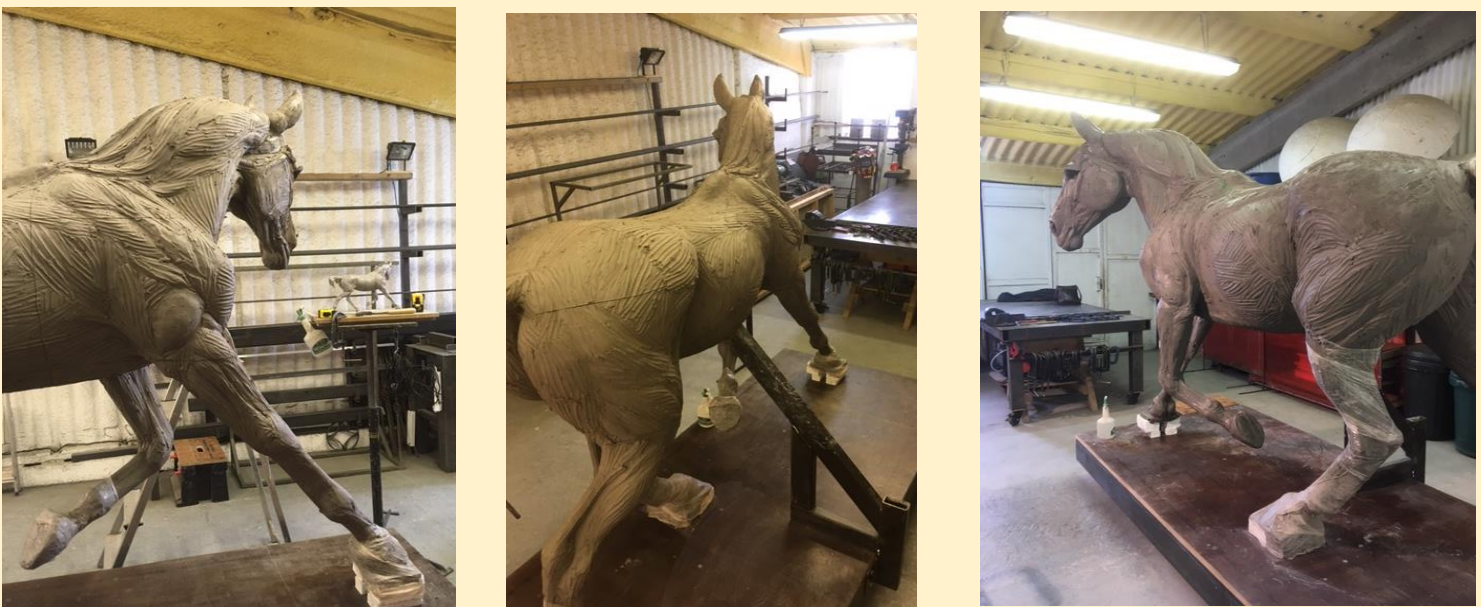


The image shows early stages of blocking out in clay. Half a tonne of clay has been used to date. Another half a tonne has been delivered. The clay has been wrapped. The plastic prevents the clay from drying out so it remains malleable to model. The metal sticking up from the head is a reminder where the polls sits accurately and is removed once the horse head develops.



May 2017

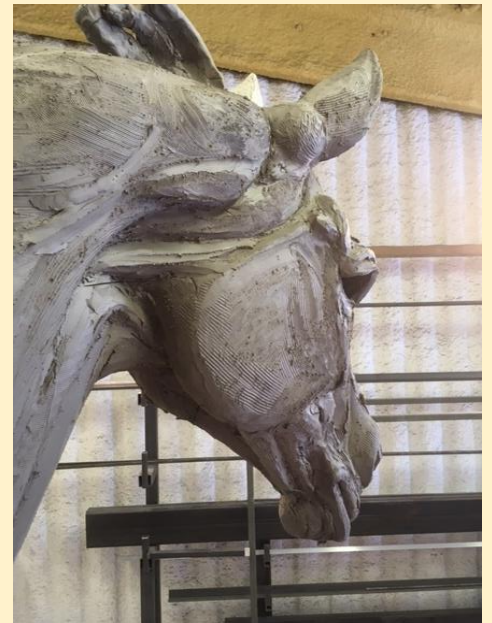
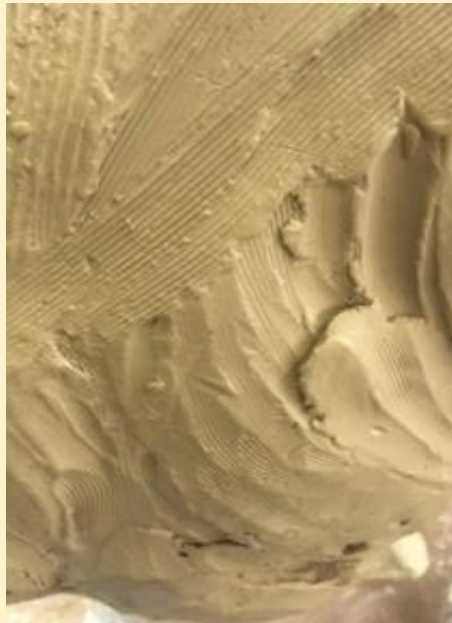
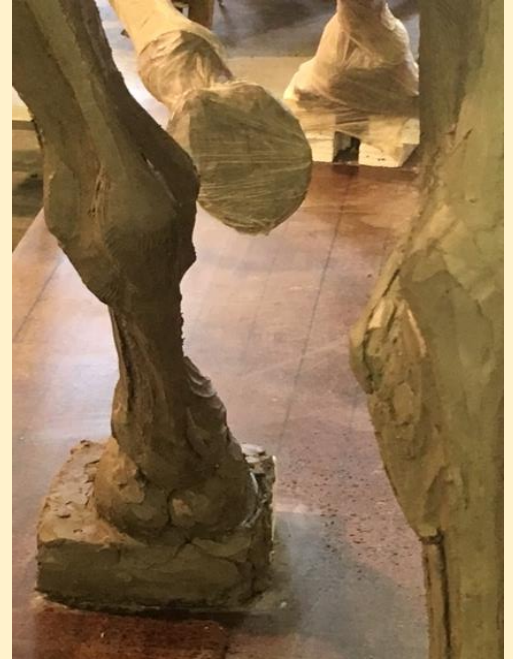
750 kilograms of clay have been used and there is still quite a way to go



Free Spirit Story

June 2017

The sculpture is changing shape everyday. The close up texture shows the change from using hands to modelling tools

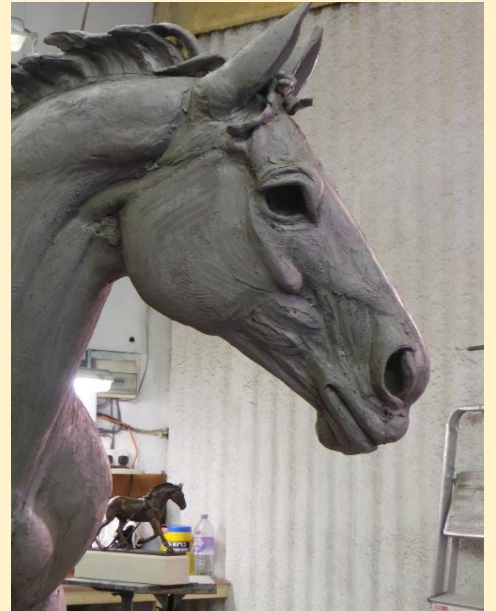
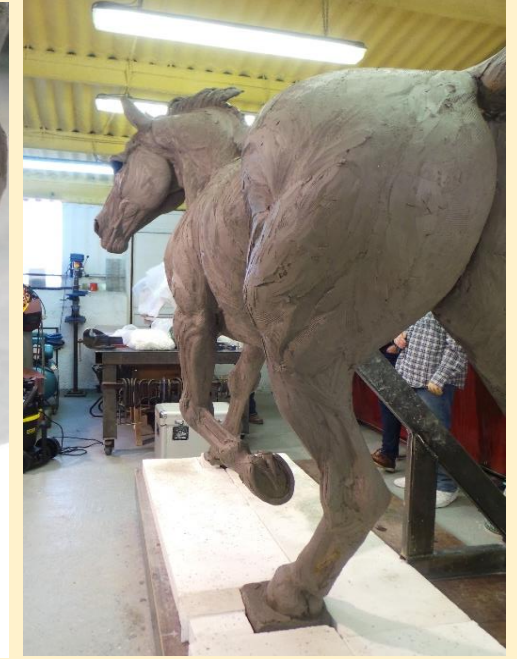
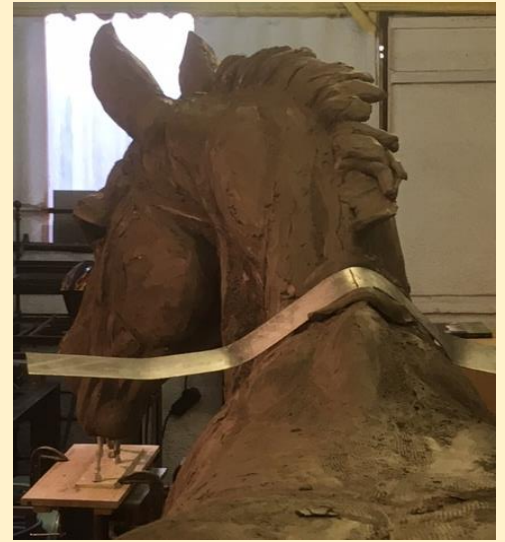
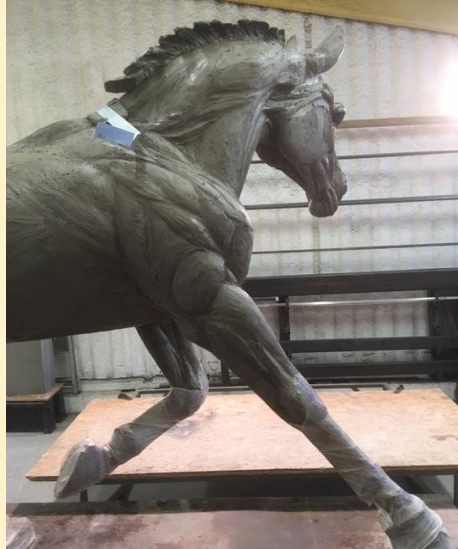


The tools show callipers and modelling tools that are in constant use



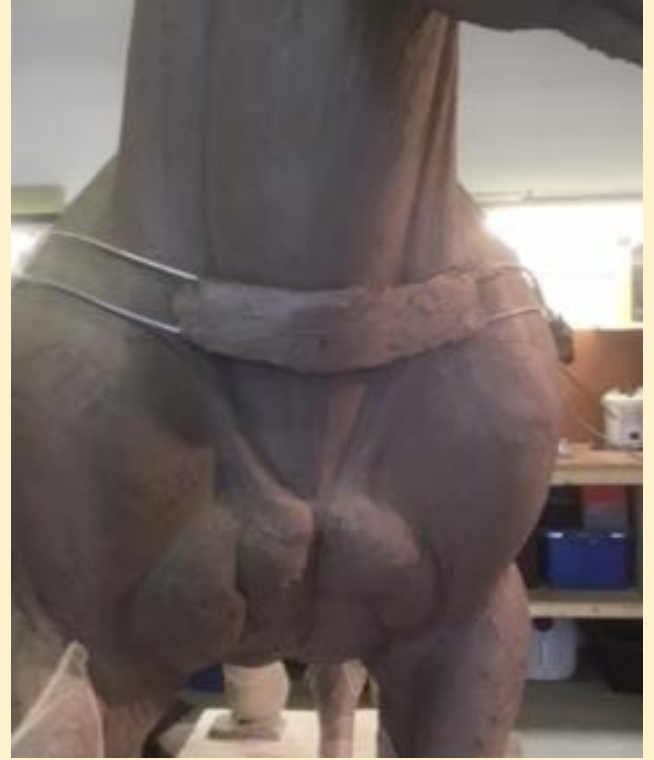
Free Spirit Story

July & August 2017



Free Spirit Story

September 2017



Free Spirit Story

October 2017

October saw the project reach a huge milestone as the clay sculpture was completed and ready for mould



Free Spirit Story

The mould process beginsA layer of Silicon rubber is initially sprayed over the entire sculpture. The mould divisions are worked out and seam lines drawn on in marker pen. A bead of silicon is applied on the seam lines. Shim is cut and applied into the beaded seam lines. Further applications of rubber are applied and circular rubber discs attached at strategic points to act as both additional supporting strength and location points. A nylon mesh material is applied with more rubber layers over the entire horse and worked up to 'walls' over the seams. The next stage is to make the resin jackets over each section. The horse has been divided into 30 sections and some sections will be further subdivided at the resin stage.

