

A METICULOUSLY REFURBISHED AND WELL APPOINTED GARDEN FLAT



CHALCOT GARDENS, BELSIZE PARK, NW3

**WHITE**  
ESTATES



## This three bedroom garden flat has been painstakingly and carefully renovated to achieve the ultimate entertaining living space.

Boasting a stunning southerly facing garden (96'2" x 27'11") this flat is truly unique and must be seen. The well configured layout comprises 3 bedrooms with ample storage room, two luxurious bathrooms and glamorous interior decoration, all in keeping with this beautifully styled property.

The semi open plan kitchen leads to the expansive reception room overlooking its own extraordinary garden to the rear, with bi-folding glass doors extending the reception area into the garden, with a serenely green outlook privately secluded amongst mature trees so as to enjoy nature at its finest.

### Location

It is located in a private road in this beautiful and most esteemed pocket bordering Primrose Hill; within easy reach of the City and the West End via Belsize Park Underground (Northern Line) and Swiss Cottage (Jubilee Line), benefitting from excellent local facilities, schools, amenities and the glorious wide open green spaces of Primrose Hill, Regents Park and Hampstead Heath. Viewing of this outstanding property is thoroughly recommended

### Accommodation

Reception with bi-folding doors onto expansive patio garden | Garden measuring 96'2" x 27'11" | Kitchen with breakfast bar connecting to reception/dining area  
3 Bedrooms | 2 Bathrooms (one en-suite) | Entrance hall | Ample storage







## Features

- Stunning southerly facing garden (96'2" x 27'11")
- Bi-folding glass doors leading to lit patio and garden
- Leafy private road
- Luxury bathrooms boasting exclusive Italian fittings
- Quality wide board oak flooring
- Private entrance
- Bespoke cabinetry
- Breathtaking lighting design throughout
- Underfloor heating throughout
- Contemporary fireplace with real gas fire
- High specification fire place
- Bespoke taller doors

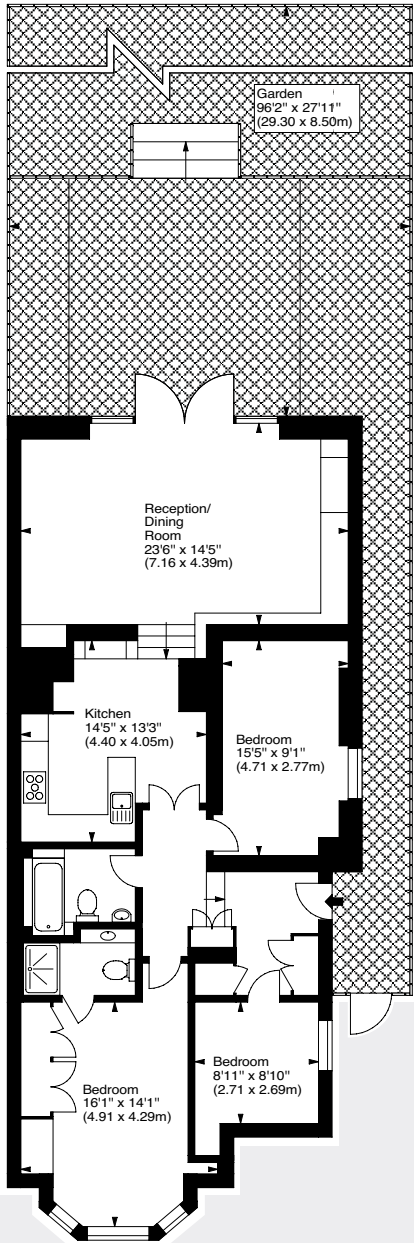
Guide Price: £1,995,000

Tenure: Leasehold, approx. 999 years remaining from 29th September 2004





Approx gross internal area  
1,204 sq ft - 111.85 sq m



The Garden Flat



Misrepresentation Act 1967. This brochure and the descriptions and measurements herein do not constitute representation and whilst every effort has been made to ensure accuracy, this cannot be guaranteed. 360790

Brochure by **capital group** 020 8671 5448



020 7370 4343  
[www.whiteestates.com](http://www.whiteestates.com)

Email: [sk@white-estates.co.uk](mailto:sk@white-estates.co.uk)

