



KNIGHTSBRIDGE ASSOCIATION

AUTUMN NEWSLETTER



Dear Member

A flurry of consultations from central and local government have preoccupied the Association since publication of our Spring news letter, notably The Royal Parks Movement strategy; the Westminster City plan; and the Heathrow Airspace questionnaire. Such documents may appear esoteric and ambiguous but their long-term impact should not be underestimated. KA has taken time to respond to each in turn working with the Knightsbridge Neighbourhood Forum and other amenity societies, where appropriate.

The fortunes of the Brompton Road continue to preoccupy the Association. This major thoroughfare has become a world of extremes, a place of poverty and riches where rough sleepers mingle with Bentleys, Ferraris and Rolls Royces. Scaffolding encrusted pavements, façade retention works and construction hoarding blight the current street scene giving the impression that it will always be like this - but it won't be.

We need to 'look through' the construction cycle - as the Bank of England does with economic cycles - to see how the Business Improvement District ("BID") initiated by Hugh Seaborn at Cadogan Estate can contribute to a new look Brompton Road once the major redevelopments at K1, 55-91 Knightsbridge and the Berkeley are complete; and the Harrods and Princes Court scaffoldings have come down.

To this end, a second BID meeting was held on 3 July attended by some thirty representatives from freeholders, commercial interests, amenity societies and local government. Councillors from RBKC attended but there was some disappointment that

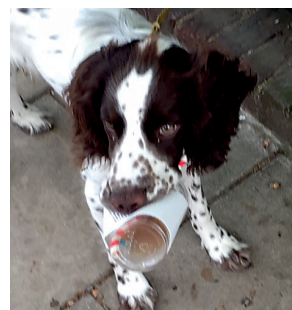
Westminster Councillors were not present. The meeting gave near unanimous support to pursue the initial findings of the BID consultant's preliminary report while recognising that the role of residents in the BID's governance structure needed further attention. We hope this initiative flourishes and look forward to further dialogue.

Fly-tipping, or the illegal dumping of household waste in streets on days other than prescribed collection days, continues to pock-mark the face of our neighbourhood. Problems arise at un-hosted short rental properties where turnaround days fall in between waste collection days making enforcement very difficult.

Earlier in the year John Pollard indicated that he wished to step down as chairman of the Law and Order committee at our AGM in January 2020. We are always sad to lose committee chairs, particularly one that has done so much to bring the KA into the digital age but at the spritely age of eighty, we could not deny John the opportunity to spend more time in his beloved Isle of Wight. Madeline Elsdon has agreed generously to take on the brief again, for the time being.

I hope you are enjoying your summer holidays wherever you might be and look forward to seeing you once 'Term' begins in September!

*Melville Haggard
Chairman*



Mr Pepys, the chairman's puppy, sets to work on the litter problem! (See page 10.)

PLANNING and CONSERVATION COMMITTEE REPORT

Carol Seymour-Newton and Simon Birkett

BRINGING THE KNIGHTSBRIDGE NEIGHBOURHOOD PLAN TO 'LIFE'

The Knightsbridge Neighbourhood Forum (Forum) and KA continue to bring the Knightsbridge Neighbourhood Plan (KNP) to life. Our recent efforts have focused on three priorities.

First, the KA has been referring to the KNP regularly when commenting on planning applications and the Forum has been doing so selectively on significant applications (as proposed in the plan). Our comments carry real weight because the KNP has been the starting place for the determination of planning applications in the Knightsbridge Neighbourhood Area (Area) since the plan was 'made' (i.e. adopted) on 11 December 2018

We have already had notable successes with: three large developments (one in Montpelier Mews and two in Lancelot Place) referring to the KNP - policy by policy - in their applications; several applications or appeals for advertising plinths on pavements refused; and several applications about cafes in Brompton Road (i.e. the International Shopping Centre) refused or appropriately conditioned. Positively, Westminster City Council (WCC) has also shown respect for our neighbourhood plan when preparing its own new City Plan.

Second, the Forum is working with the KA to submit applications to Westminster City Council (WCC) for the neighbourhood portion of Community Infrastructure Levy (CIL) monies. This money is a levy on developers and increased from 15% to 25% when the KNP was 'made'. The first applications are due by mid-September for up to £31,000. These are likely to include a request to restore and improve the 'Hole-in-the-Wall' including its lighting. We are also discussing with Westminster whether these funds could be used to tackle rubbish, recycling and grease problems on our streets. Principles and priorities for general and area-specific projects were approved in the KNP.

Third, the Forum has continued to pursue the 'Top 85 actions' proposed in the Knightsbridge Management Plan (KMP). These are actions requested by the community during various consultation stages that could not legally be included in the KNP itself. This work will be a priority in the Autumn.

THE COUNCILS' PLANS

WCC's City Plan is due to start its 'Examination' by a planning inspector in the Autumn. In related news,

the RBKC's new Local Plan Partial Review which was started some time ago, has passed its 'Examination' and is due to be approved by the council on 11 September.

CONSTRUCTION SITES

55-91 Knightsbridge and 1-3 William Street

The new building is beginning to rise behind the retained Edwardian façade and completion is on course for the second quarter of 2020.

During August work commenced in a number of areas including re-installation and restoration of the Knightsbridge façade.

There have been a number of issues with the barriers around the hotel where drivers have been ignoring the parking signs and blocking the Park Tower's forecourt. The barrier has unfortunately created a parking space where chauffeurs stop and wait and when asked to move have refused. The Council has been asked to monitor and enforce. Some cyclists are continuing to use the pavement rather than the cycle lane leading to near misses.

For further info, contact Alexander Nicholson at 55knightsbridge@fourcommunications.com

The next Community Liaison Meeting will be at the Park Tower Hotel on 10 September at 6.30pm.

The Knightsbridge Estate – K1

The site bounded by Sloane Street, Basil Street, Hooper's Court and Brompton Road

Work is progressing well on the new development situated at the northern end of the site. London Underground are continuing to carry out works to deliver step free access to Knightsbridge Station from Hooper's Court.

With steelwork underway on site, the frame of the building is now visible above the hoarding. Works being undertaken on the exterior of the site will start to be visible, including scaffolding along Brompton road and the commencement of works to restore the building facade along Sloane Street.

Community Liaison Group meetings are held regularly, information from construction@cascadepr.com

The Berkeley 33-39 Knightsbridge

Construction of the superstructure will commence as soon as excavation of the basements has been completed. Permission finally came through from TfL to install a pit lane along the Knightsbridge bus lane, taking the pressure off Old Barrack Yard which would only be used when the pit lane was not available.

The target for completion of the whole project is towards the end of 2021.

The next community liaison group meeting is on Tuesday 1st October at the Berkeley, contact Sam Griffiths at
33-39knightsbridge@fourcommunications.com

27 Knightsbridge



The Berkeley is currently exploring plans to convert this building which is adjacent to the hotel, from office to hotel use, to be run by the hotel as an annex of the main hotel. Works would only entail internal alterations. This would provide 32 additional hotel suites.

Having The Berkeley oversee deliveries to 27 Knightsbridge would allow much better management of Old Barrack Yard – they are currently drawing up a management plan and intend to brief neighbours on this. The complexities of servicing a hotel and an office building separately have caused many problems in recent years, and this should make things much smoother.

The conversion to hotel will be entirely internal and reversible, so if the hotel were to move out there would be no loss of office use.

For further information, contact Alexander Nicholson at
27knightsbridge@fourcomunications.com

ALBERTOPOLIS

The Great Exhibition Road Festival 29-30 June

Thomas Angus



The great Exhibition Road Festival

Many members will have joined the crowds who flocked to enjoy the first Great Exhibition Road Festival. Some 22 partner organisations including the world famous museums, institutes and educational establishments in the area, known as Albertopolis, collaborated under the umbrella of the Exhibition Road Cultural Group to put on a magnificent show celebrating science, the arts and medicine - very much reflecting the spirit of the original exhibition (the Great Exhibition of 1851) created by Queen Victoria and Prince Albert.

In spite of Saturday being one of the hottest and most humid days of the year – visitors were not deterred. Sunday saw a welcome drop in the temperature. The organisers were delighted to see so many families and young people participating enthusiastically in the interactive activities, live experiments, workshops, theme zones and other highlights on offer.

Initial estimates suggest that over the weekend the Festival attracted more than 50,000 visitors. Plans are already in the pipeline for the Great Exhibition Road Festival 2020.

Provisional dates for the diary: 3–5 July.

NATURAL HISTORY MUSEUM

The NHM Gardens project

The Museum has given us an update on the Gardens project. Sadly they were unable to achieve sufficient funding for their original ambitious proposals and these have now been scaled back:

In May we submitted a new application for the project to the National Lottery Heritage Fund (formerly HLF). While it is still far from

*certain that we will be successful, the NLHF's new Strategic Funding Framework has a focus on landscapes and nature so the project is a good fit. We will hear from the NLHF in late September, and the good news is that we have passed £6m in pledges towards the project. We have also agreed a new name – **The Urban Nature Project: Communities acting for local wildlife** – which more accurately reflects the national reach of the programme which is anchored here in South Kensington. This is the name for the project - not of course the spaces in the gardens. If you know anyone who would like to see their name aligned to a feature in the NHM's gardens landscape, do please let us know!*

Our next community liaison group meeting with the Museum will be in the Autumn when they will be providing more detailed plans.

The Christmas Ice Skating rink

The Museum's Ice Rink will continue to operate until the work on the east gardens commences as part of the Urban Nature Project. On the current schedule this work is due to start in 2021; however this is contingent on receiving the necessary consent and funding for the project. So, currently the Ice Rink is planned to happen in 2019 and 2020.

This year it opens from Friday 19 October to Sunday 12 January.

Railing and stonework repairs

Summer saw the continuation of the phased repair and restoration works to perimeter railings and stonework (already complete on the main Cromwell Road entrance gates and along Queen's Gate), which is also returning the Grade one listed railings back to their original heritage red colour

This necessitated closure of Cromwell Road pavement west of the Cromwell Road entrance gates down to Queen's gate from 5 August to 12 August from 7am to 7 pm, and an overnight lane and pavement closure along Cromwell Road on 13 August to allow removal of the existing railings. There will be a further closure in November to allow for the railings to be reinstalled. The exact date will be confirmed nearer the time. The work is expected to last for around 6 months.

Terracotta conservation works

Scaffolding has been erected on the West Pavilion to enable them to carry out conservation of the

terracotta. Works will continue until October (when works have to be paused due to colder weather) and will then recommence in spring 2020 on another elevation.

ROYAL COLLEGE OF MUSIC

This summer the entrance and foyer hall of their Grade II listed building on Prince Consort Road will be opened up, the mosaic floor preserved, a new reception and box office created and improved access provided.

This is all part of their More Music Campaign to provide state of the art facilities for students – new performance venues, more practice and social spaces and a new RCM museum. This major project is due for completion in 2020.

SCIENCE MUSEUM

New Space

March saw the opening of the Smith Centre by the Queen.

The conversion of the old Post Office sorting office a series of flexible rooms and a yard, provides a number of elegant spaces for use by supporters and patrons.

GCHQ at the Science Museum

In July, Jeremy Fleming, Director GCHQ, opened a major new exhibition at the Museum marking GCHQ's Centenary. The exhibition – Top Secret; from ciphers to cyber security - runs to February 2020.

ROYAL ALBERT HALL

Public realm proposals

The Royal Albert Hall team has presented their initial proposals to improve the adjacent public realm in the build up to their 150th anniversary in 2021. Some proposals are welcomed such as more detail on the previously agreed 'Re-imagining Albertopolis Scheme' to provide step-free access towards the Albert Memorial. Others are necessary, such as new 'hostile vehicle measures' to replace the current building work enclosures. However, the KA and nearby residents have expressed serious concerns about possible longer road closures or other changes to parking and access. The KA submitted a detailed response and awaits news.

IMPERIAL COLLEGE

Princes Gardens

Eyec Day Nursery will move back into 8-9 Princes Gardens at the end of the year and the school will re-open there in January 2020.

St Nicholas Montessori is due to open at 10-13 Princes Gardens in September 2020.

Both the above are likely to have an adverse effect on local residents, in particular from the sheer numbers involved arriving by car, cycle, on foot, with buggy; but we hope that this will be mitigated by some of the conditions the Council imposed as a result of consultation with the KA.

OTHER NEWS – SOUTH KENSINGTON STATION

Sophie Andrae

In April local groups were invited to a presentation of the outline scheme by Native Land and TfL for the Around Station Development (ASD) at South Ken Station. Native Land has commissioned architects Rogers Stirk Harbour. Sadly, the proposed development bears no relation to the Brief for the site published by TfL in December 2016 after two years of close consultation with local residents' groups.



We have long argued for a “conservation led” development that respects the listed station and arcade, retains the Thurloe Street block with well known and much loved institutions such as Medici and Dacquoise and which develops the rest of the site in sympathy with the character of the Conservation Area. The 2016 Brief illustrated how this could be achieved and set out a series of laudable principles and objectives. Whilst this Brief formed the basis of TfL's search for a development partner – and won the support of RBKC - what is now emerging bears no relation to the principles enshrined in that Brief. It is not surprising that local groups feel betrayed and now regard TfL's lengthy consultation exercise as a sham.

South Kensington's sense of place is characterised by the low rise station building which is light and airy. As this goes to press Native Land are proposing what is in effect a six storey building on the bullnose in an aggressively modern style; the Thurloe Street block is to be almost entirely demolished and instead of restored shop fronts these are to be designed in a modern idiom, in the architect's words, as a “memory” of what was once there; and a massive, aggressively



Note: use of a wide angle lens in the preparation of these architectural perspectives makes the proposed new buildings appear very much smaller than they would be in reality.

modern block is planned for the site directly opposite the outstanding Grade II* listed Pelham Place. Pelham Place is one of the finest groups of planned classical houses in the Borough. South Kensington deserves something much better.

Since Native Land became involved consultation has been minimal and the good relationship which had been established by TfL with local groups has evaporated. What is worse is that Native Land now claim in their literature and on line that their development is needed in order to provide step free access and to improve the station. This is not so. Listed Building Consent was granted last year for the station improvements and works to enable step free access. It has been made quite clear by TfL to local groups since 2014 that the station improvements were separate from the ASD.

Is Native Land is listening mode? Time will tell. We will continue to argue for a “conservation led” approach.



CLOSURE of SOUTH KENSINGTON POST OFFICE



The Post Office is in crisis following a massive drop in income. Earlier in the year it announced the proposed closure of up to 2,500 across London including the one at South Kensington. Local residents, businesses and amenity associations, including the KA, local councillors and the MP protested vigorously to the Post Office through their public consultation process. However, in spite of all the opposition it was closed at the end of July.

HARRODS

By the end of the year repairs to the terracotta frontage will have been completed and the Edwardian canopies, which are already in place in Hans Crescent will have been restored to the rest of the facades.

BELMOND CADOGAN HOTEL



Built in 1887 The Cadogan Hotel in Sloane Street famed for its illustrious former guests such as Oscar Wilde - notoriously arrested there in 1895 and Lillie Langtry mistress to Edward VII – re-opened with a fanfare in the spring after a five year multi-million

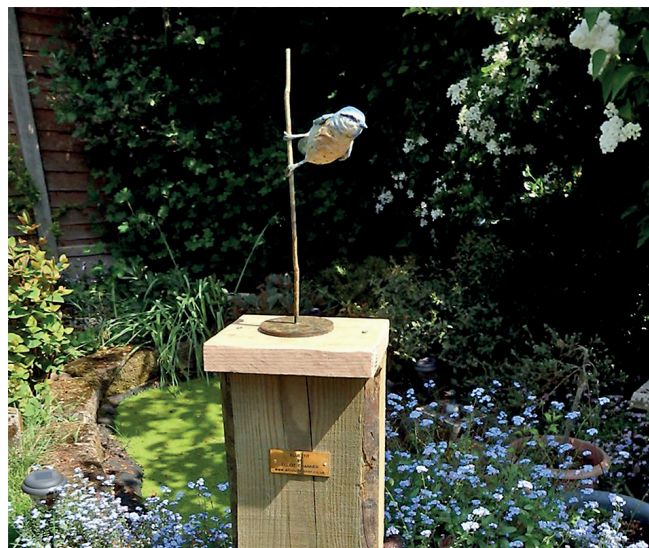
pound refurbishment. Now known as the Belmond Cadogan Hotel it is owned by LVMH, owners of the Moët and Chandon, Hennessy and Louis Vuitton brands. There are 54 luxurious rooms and suites and guests have access to Cadogan Place Gardens and its tennis court. Adam Handling, renowned for his restaurants in Covent Garden and Hackney is in charge of the restaurant, where he will 'employ a sustainable and no-waste approach to his menu of British cuisine'.

The hotel is comprised of five adjoining townhouses and has retained its characteristic Queen Anne Revival-style architecture and original design elements - working fireplaces, mosaic floors, and original old wood panelling - and new elements drawing inspiration from the hotel's architectural character and heritage.

TREVOR SQUARE SUMMER PARTY

Anne Wright – Chairman

Trevor Square Garden Management Company



Cyanistes caeruleus

This year's summer party following the AGM held in Trevor Square, included the unveiling of a bronze wildlife sculpture created by Elliot Channer. A graduate of the City & Guilds Art School, Elliot contacted the Knightsbridge Association to enquire whether a garden square would accept the loan of one of his limited edition sculptures to enhance the use of their garden. Trevor Square was the lucky recipient of a bird sculpture which now happily sits amongst the trees in the north of the Square. This is a splendid addition to our garden – thank you Elliot for your talent and generosity and best of luck in your future career.

Elliot exhibits his work in a number of London galleries and can be contacted via his website www.elliotchanner.co.uk.

TRANSPORT AND ENVIRONMENT

ROYAL PARKS MOVEMENT STRATEGY

The Royal Parks consulted recently on the first stage of their new 'Movement Strategy'. Key points in the KA's response included: our opposition to the possible closure (in the long term) of West Carriage Drive; the need to tackle 'fast-cyclists' and other cyclists using the footpaths and grass; a request to review and improve the traffic capacity of the north and south exits to the Parks; a request to divert cyclists from Rotten Row to the East-West Cycle Superhighway; and support for all users of the Parks, primarily those on foot, to feel safe. Further, more formal and detailed consultations are expected.

HANS ROAD – WALTON PLACE – BASIL STREET JUNCTION

Following the introduction in December of yellow hatching to prevent drivers blocking through traffic at this congested junction, RBKC consulted on a number of banned turns. As a result of which in the first instance they have introduced a banned right turn from Hans Road into Basil Street. They report that traffic is flowing much better although a high percentage of vehicles still continue to make a banned right turn, and they have asked the Police for some enforcement. There are no plans currently to bring the ban on the straight ahead movement from Walton Street into Basil Street into effect, however they continue to monitor the situation and if the situation changes they may need to bring this in too.

PUBLIC TRANSPORT

What is happening to our Buses?

To great annoyance, the popular No.10 which took us along Oxford Street, to the British Museum and beyond, has disappeared altogether.

The no. 9, which seems to run in short bursts, suddenly started turning right down St James's Street, leaving those used to being dropped outside the Royal Academy with a long walk up from Pall Mall. Now, which will please many, it is being re-routed back along Piccadilly.

Then there is the newish 23 bus, didn't it go in its early days along Oxford Street? Now it disappears up Edgware Road.

There is no way of getting along Kensington Road to Oxford Street without changing buses, which is irritating to say the least.

We understand there has been a long-term aim to reduce buses along Oxford Street, but TfL and the Mayor have claimed that this is designed to improve the flow of traffic. In reality the changes are mostly about saving money for TfL, whose income from bus and tube fares has, for a variety of reasons, fallen considerably in recent years.

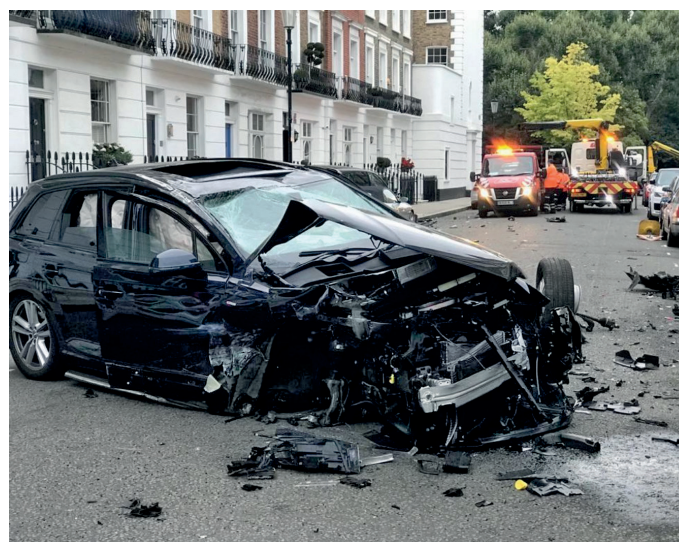
In terms of changing buses, although it's clearly inconvenient, it shouldn't cost any more money as any second trip taken within an hour of the first trip is free.

'SUPERCARS' OUT OF CONTROL

For several years now the influx of boy racers, mainly from the Middle East, roaring around Knightsbridge in their souped up cars well into the early hours have enraged local residents.

RBKC introduced PSPOs (Public Space Protection Orders) and issued 148 fines of £1000, to little effect.

Following a recent incident in Moore Street, Chelsea, when one of the drivers crashed into and wrote off several luxury cars including his own, RBKC councillor, Johnny Thalassites, has written to the Transport Secretary asking for the area to be included in a UK trial of a new generation of acoustic cameras which would help to identify and deter these dangerous maniacs.



The aftermath in Moore Street, Chelsea

LAW AND ORDER REPORT

Dr John Pollard

The Law and Order group met for its 101st meeting during the early part of July. Our invited guest was a member of the Metropolitan Police Motorcycle Division, and we were entertained to a discussion of their duties, particularly in major road accidents with fatalities and serious injuries.

We also had an opportunity to admire the latest electric car added to the Force.



Statistics presented were in line with previous quarters, with small increases in theft from cars (tourist cars) and a drop in burglary, partly due to the arrest of a prolific burglar. Moped thieves are on the decline as a result of better surveillance but those involved seem to have taken to bicycles and ride around in pairs. Please be on the lookout.

Mentioned was the rise of convictions from “dashcam” footage (video cameras in cars) and the fact that the Police will accept any video or photographic evidence of wrongdoing. It was stressed that residents should never place themselves in harm’s way.

Residents were reminded to join with “NEXTDOOR”, an online site with local reporting used frequently by our local Police to alert residents to matters of safety. Our local area is “NEXTDOOR BROMPTON”, and this is accessed on registering by merely typing in one’s local postcode. (The computer does the rest!)

We now receive regular reports regarding fraud in the RBKC area. Examples include online shopping fraud (£9653 lost), banking fraud (£15,691 lost) and investment fraud (£987,000).

These are worrying and staggering amounts and we must all take steps to be alert. Should you be directed by an e-mail off a regular site, BE SUSPICIOUS. Always look at the web address at the top. If you don’t recognise it, CLOSE THE SITE and contact either the bank or the Company by telephone. NEVER USE DIRECT BANK TRANSFERS.

A report from the Exhibition Road Festival was very positive with absolutely no incidents. “Supercar Sunday 2019” was cancelled. No reason given, but perhaps the movement against polluting cars in cities worldwide is finally being understood by the “Petrolheads.”

Comments were made in the Law and Order meeting regarding the experience with “Private Policing.” Those involved have been very satisfied with the outcome and it is good to report that the officials involved have established a good rapport with our local Police Officers. The Knightsbridge Association remains neutral in its attitude feeling it is up to local areas to evaluate the cost-safety benefits.

Our Police Officers observed that as far as they were concerned, there was no impact on the overall crime figures but that criminals had merely shifted their activities to nearby streets.

Have you noticed these road boxes depicting a bicycle?



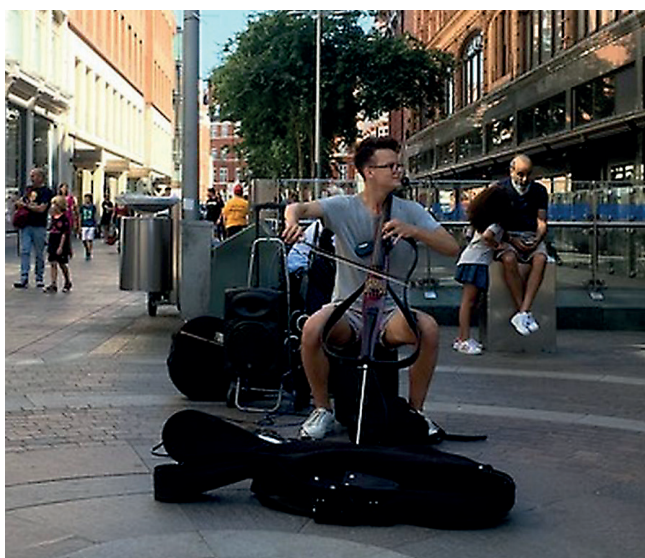
Take care at traffic lights that you do not stop your vehicle in them as you could receive a fine and several points on your driving licence.

These are specifically for cyclists to congregate and lead the traffic off rather than being squeezed on the inside of stationary traffic. Please note and avoid problems!

And finally, if the driver who parked near the pillar box across from Harrods would please identify himself or herself.....



RBKC BUSKING POLICY IN PLACE



The Council has now introduced a PSPO prohibiting all noise based busking in Zone 1, which includes Hans Crescent. Some performances/entertainment will be permitted as long as they do not include singing, musical instruments and/or amplification (amplifiers, loud speakers, megaphones or any similar equipment). Initial reaction is that there has been a welcome

reduction in noise. Complaints can be made to the Council by telephone – 020 7361 3002, by email – busking@rbkc.gov.uk or online at <https://www.rbkc.gov.uk/environment/environmental-health/noise-and-nuisance/resolve-problem/contact-noise-and-nuisance-team>

INCREASE IN ROUGH SLEEPING

According to figures released by the GLA, rough sleeping across London increased in 2018/9 – in Westminster by 16%.

In July WCC working with its partners launched the next phase of their 'rough sleeping awareness campaign'. Part of the campaign is to encourage people to give money to registered charities and local services, rather than directly to rough sleepers. The money can then be used constructively to help them into sheltered accommodation and a better way of life. Members of the public can now donate online at www.westminster.gov.uk/roughsleeping, and over the coming weeks and months the Council is rolling out contactless 'tap' donation machines across the city. More information from Desiree Weston at dweston@westminster.gov.uk.

PETTY CRIME IN THE INTERNATIONAL SHOPPING CENTRE

The attractions of the International Shopping Centre make Knightsbridge a target for petty crime - an inevitable focus for thieves and crooks. Recent evidence for this can be traced from the Police UK website at <https://www.police.uk/metropolitan/00BK09N/crime/>.

The Knights Security of London Limited, also known as 'K.NS Security' (www.theknightsecurity.co.uk) is a private, local security firm based on Brompton Road. Its key objective is to deter criminal activity by patrolling Brompton Road and nearby streets in order to provide security to commercial premises and residential properties along this busy thoroughfare, working closely with the community and local police.

This mission is close to the heart of both its Managing Directors who live in Knightsbridge and have done so for many years making this a local initiative instigated by local circumstances.

The KA is not promoting this initiative but has no objection if that is what commercial entities (or residents) in the Brompton Road want to do. We continue to believe that much greater pressure needs to be applied to the Mayor of London, through our elected Councillors, to increase resources available to the Police to enable them to fulfil their public duty.

AIRBnB ALERT !

Just a reminder – if you live in a block with communal parts insurance, allowing Airbnb visitors to stay in the building may invalidate building insurance.

LICENSING REPORT

Paul Meitner

There's been plenty going on in recent months, with many applications to review and objections to be lodged with our two local authorities. Familiar themes include the 'terminal hour' for the serving of food and drink, the placing of tables and chairs on public rights of way and late night 'entertainment,' which often means disrupted sleep for residents.

TABLES and CHAIRS

Earlier cases establishing the principle that these should be removed no later than 6 p.m. have been reinforced by more recent decisions from the RBKC Licensing Committee. In one instance, 130 Brompton Road, a request to place tables and chairs on the pavement was refused as it would have impeded the flow of pedestrians and made cleaning of the path more difficult. In another, Café 360, at 176 Brompton Road, RBKC took enforcement action in response to various licensing and planning breaches that included unauthorised tables and chairs and hot food, as well as an illegal shop front. As a result of our own reporting of licensing breaches Westminster City Council took enforcement action against Illy Café at 102A Brompton Road, resulting in the removal of 8 tables and 16 chairs from the pavement. Our local councillors have also taken up the cause – last month Sof McVeigh led a group of local police, residents and councillors on a walk down Beauchamp Place, noting the unsightly presence of tables and chairs on a narrow pavement, as well as breaches of the 'demarcation line' beyond which they must not be placed.

BUDDHA BAR

This application involved the extension of the terminal hour for the sale of alcohol and provision of late night refreshments by 2 hours respectively, from 11.30 p.m. to 1.30 a.m. and Midnight to 2 a.m. The application was vigorously opposed by 199 Knightsbridge and ourselves, resulting in a full hearing at Westminster City Hall that lasted over three hours on 4 July. By the time the hearing took place the Police had withdrawn their earlier objections. The applicant argued that suitable measures, including sound proofing the premises and the proactive management of traffic and dispersals at closing time had resulted in no complaints from residents in recent years. Having heard extensive arguments from Counsels representing the applicant and 199 Knightsbridge the Council determined that a compromise between the competing needs of business and residents was in order, resulting

in the terminal hour for the provision of refreshments being brought back to 1 a.m. We very much hope that this will not create a precedent for other late night premises in the area.

GONE WALKABOUT

On 11 July I joined representatives of Westminster City Council's Licensing and Environmental Health teams on a 'walkabout' along Brompton Road (east of the junction with Montpelier Street) and Knightsbridge (east of Trevor Place). I was able to point out a number of current issues, including the obstruction of pedestrians by tables and chairs, shisha, begging and the staining of paving stones by food waste. During our walk we passed Cavalli on Knightsbridge Green, where a closure notice had been served on the premises as a result of illegal shisha activity. We also identified sections of damaged pavement on Knightsbridge that were a trip hazard, where the WCC team agreed that repairs were required.

As a result of the walkabout WCC has promised to steam clean the section of pavement between Montpelier Street and Moreau House this Autumn, with the possibility of further cleaning once the construction work at Moreau House has been completed.

SUCCESSFUL SHISHA PROSECUTION by RBKC

Contrary to some people's understanding Shisha, or the smoking of vapourised tobacco and other substances that have been passed through water, does not require a licence. However, it is not legal in an enclosed space, such as an interior room or cellar, Shisha pipes must be labelled as such and the Tobacco and Related Products Regulations 2016 require health warnings to be displayed. It was the breach of these requirements that resulted in action being taken by the police and Environmental Health against Saudi Kitchen in Beauchamp Place last November, resulting in Westminster Magistrates Court imposing a fine of £2,000 and awarding costs of £4,972 at a hearing in July. As an association we have made the case for greater regulation of Shisha with Government, via Westminster City Council and Mark Field, MP. The response from the Minister, Jake Berry, was that we needed to make the most of existing powers and fully utilise non regulatory approaches before introducing new regulations.

HYDE PARK EVENTS

BRITISH SUMMERTIME CONCERTS

This year saw a better than ever line-up of stars performing over the two weekends in July. However, unlike in previous years we received complaints about the level of noise in Knightsbridge from a number of members, some of whom had managed to find the complaints number and complain directly to the Parks. They sent a representative together with an official from WCC to take measurements in Ennismore Mews and Montpelier Square. Apparently these came in at 45 and 46 decibels, seemingly well within the permitted 75 decibels. The measurements were taken at ground level, but it may have been that the noise was worse at upper floors.

We will be talking to the Parks and WCC and will find out if the position of the amplifiers changed from last year, and whether the wind direction contributed and what can be done to prevent a repetition next year. But the noise successfully ruined for some

watching the Wimbledon finals and the World Cup Final from Lords on TV.

WINTER WONDERLAND

The annual funfair will run from 21 November to 5 January. There will be some major new attractions as well as the old favourites.

PROMS IN THE PARK and Radio 2 LIVE

These annual broadcasts in the Park are on Saturday 14 and Sunday 15 September respectively. KA will be attending the pre-brief meeting.

**For noise complaints ring
0300 061 2222 or
WCC number 0208641 2000**

KA EVENTS

HYDE PARK SUPER NURSERY 15 May

An evening visit by members to the impressive £5m state of the art nursery, was followed by a refreshing glass of wine. Mike Jones, nursery manager, took us on a guided tour of the football pitch sized glasshouse, where some 2,000 varieties are grown to service the 5000 acre Royal Parks estate. The glasshouse is split into 13 controlled zones, each operated by Climate Controls' latest technology, which adapts the climate according to the needs of the plants.

The whole system is eco friendly and saves the Parks some £200,000 a year.

Numbers were limited, but it may be possible to arrange another visit in May next year.

Among those we met was Topiary Tom, named after Tommy Moss who retired after working for 46 years at Regents Park. He comes out in June and spends the summer there, returning in late autumn to be cleaned out before being replanted in the nursery during early spring.



LONDON AIR AMBULANCE

Last year's charity raffle at the AGM was in support of the London Air Ambulance. In May several members of the committee, were invited to pay a visit to the Helipad on top of the Royal London Hospital.



Get closer.

V&A Academy
Hands-on art history courses
at the world's leading museum of
art and design.
Find out more at vam.ac.uk/courses

TWO for MEMBERS' DIARIES

2019

Thursday 24 October 2–4.15 pm
TOUR OF THE SCROLLS and
AFTERNOON TEA PARTY

at the Westminster Synagogue
Kent House,
Rutland Gardens, SW7 1BX
(opposite the Barracks)

For tickets: see enclosed flyer.

2020

Monday 13 January 6.45 pm
Knightsbridge Association AGM

in the Ballroom, by kind permission
of the Mandarin Oriental

NEWS FROM THE WEBSITE

Keeping you 'Up To Speed'!

Thanks to the involvement of member Francesco Brenta, the Knightsbridge Association has recently introduced a Facebook page, low-key for the moment.

This will complement our Twitter page (which also appears on the front page of the website.) and widen our audience.

The two social platforms will mirror each other and we hope that our Facebook presence will increase our exposure to the public and encourage local residents to appreciate the hard work the KA performs and become members.

Those who are already on Facebook, please 'like' and follow our new page.

Those who are not on Facebook, we encourage to join and profit from alerts and news items we send both to your computer and your very clever mobile telephone.