



# KNIGHTSBRIDGE ASSOCIATION

Autumn 2018 NEWSLETTER



## Dear Member

As I write, we are witnessing one of the UK's hottest summers. Central London parks and gardens are scorched and a heath fire on Wanstead Flats near Stratford took some 225 fire fighters to bring it under control. Some may remember the hot summer of 1976 but it was the heat wave of 1911 that set a marker as one of the most severe periods of heat to hit the country with temperatures that were not exceeded until 1990. A history of heat waves can be found at [https://en.m.wikipedia.org/wiki/List\\_of\\_heat\\_waves](https://en.m.wikipedia.org/wiki/List_of_heat_waves) for those with the time and curiosity to find out more about 'temperature phenomena'.

Heat of a very different nature erupted on 6 June from the top of the Mandarin Oriental Hotel. A plume of black smoke alerted local residents and passers by to a serious conflagration on the hotel roof that took 20 fire engines and 120 fire fighters to bring under control. All credit is due to the quick thinking of management, Fire and Police services that cordoned off the area and re-routed bus services so quickly and effectively. The hotel plans to be fully operational again later in the year.

Examples of issues continuing to engage the KA over the summer include - but are not limited to - some of the following.

### Security in Montpelier Square

A number of residents in Montpelier Square have clubbed together to retain, at their expense, a private security contractor. The decision followed

a meeting in the Square in May attended by some residents at which concerns were voiced about the apparent lack of protection provided by the Metropolitan Police. In these times of increasing crime and uncertainty, this seems to have given rise to a growing sense of insecurity for some residents in the Square.

The KA was not involved in promoting this initiative and it remains our position that much greater pressure needs to be applied to the Mayor of London, through our elected Councillors, to increase resources available to the Police to enable them to fulfil their public duty. The KA has no objection to this initiative if that is what residents want to do but it remains our position that retention of private security companies for residential surveillance, if allowed to proliferate, only increases polarisation within society while complicating the process of law enforcement.

### Events in Hyde Park

We are mindful of the increasing intensity of commercial activity within Hyde Park and the disruption this can cause. To this end, we made a rough calculation of the potential "down time" caused by big events based on event data provided by TRP and wrote to TRP's Chairman in May about our concerns. At a subsequent meeting with TRP officials it was confirmed that the number of licensable events will not increase but that the intensity of utilisation within existing licenses will rise.

## Air quality

Air quality in Knightsbridge continues to degrade. Knightsbridge was the second worst air pollution hot spot in London in 2017 according to the latest scientific data released by Kings College, London. While nitrogen dioxide readings in Knightsbridge are down they still breached limits on 80 occasions during the year as opposed to the 18 allowed by EU Law - more details on page 8.

## Waste Management

A disgraceful spate of commercial and residential waste dumping on the corner of Montpelier Street and Brompton Road disfigured this prominent London shopping zone in the run-up to the May Local Authority elections. Unfortunately, there is every sign that this bad habit has broken out again. In April / May, KA working with WCC Councillors managed to put a stop to the blight by introducing twice-daily waste collections. A similar response is now required alongside unremitting enforcement of penalties for fly-tipping. Residents and commercial premises alike need to be aware that depositing rubbish on the street on the incorrect collection day(s) is fly-tipping which attracts severe penalties – see Street Cleanliness on pages 7 and 8.

## KNF Referendum

The Referendum on the Neighbour Plan is due to take place on **Thursday 18 October** and is

probably the most significant event to take place in the community over the last ten years. Residents are urged to turn out and vote. The KA has contributed to the Plan since inception and the documents to be voted on carry our strong support – further details on page 10.

## GDPR

With grateful thanks to Olivia Cox, Elmar Toime, Neil Carthy, John Pollard and Carol Seymour-Newton, we completed a “GDPR exercise” ahead of the May deadline via a combination of email, hard copy and Mail Chimp notifications. Our membership database has been revised accordingly and a Privacy Policy statement will follow shortly.

## Future Events

The Annual General Meeting will take place at the Mandarin Oriental Hotel on **Monday 14th January 2019**. The hotel is due to re-open in the Autumn after repairs following a disastrous fire in June.

A KA visit to Chevening, the country residence of the Foreign Secretary, will take place on **Tuesday 11 September**. I look forward to seeing some of you on the visit which is now fully booked.

With best wishes for an enjoyable Autumn.

**Melville Haggard, Chairman**

# PLANNING & CONSERVATION REPORT

*Edward Davies-Gilbert and Carol Seymour-Newton*

## KNIGHTSBRIDGE CONSTRUCTION SITES

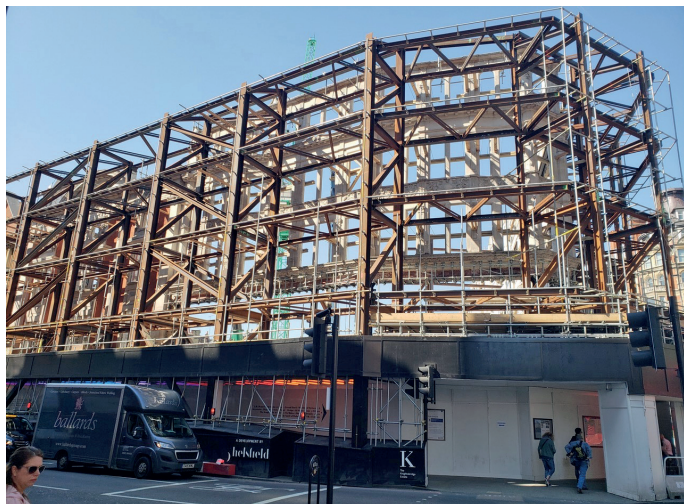
### 55–91 Knightsbridge

Cheval Property Management have appointed Sir Robert McAlpine as main contractor on the 55-91 Knightsbridge site. Work began on site in June, and the construction phase will continue until the last quarter of 2020. At present, bulk excavation to construct the basement is underway on site and will continue until October.

*55-91 Knightsbridge - the retained façade*



## K1 – The Knightsbridge Estate



*K1 - Brompton Road retained facade*

The demolition works to the K1 redevelopment were completed at the end of the Spring. In order to retain the historic façade along Brompton Road, over 600 tonnes of steel was installed around the perimeter of the building, as the site's interior was carefully brought down. Since then, Skanska has been appointed to manage the construction phase, which has to date, included the piling and casting of over 2000m<sup>2</sup> of foundations, using over 1000m<sup>3</sup> of concrete.

With 95 personnel and three piling rigs now on site, works are progressing well and over 413 of the 578 piles have now been installed to form the basement walls and the foundations. The piling works will be ongoing until the end of September this year. The works to form the basement slab at Basement 1 level have commenced and the excavation of the basement to B3 level will follow from October.

If you have any general enquiries about construction works at the site, contact The Knightsbridge Estate project team by Freephone (0808 281 9554) or Email [construction@cascadepr.co.uk](mailto:construction@cascadepr.co.uk).

## THE BERKELEY and 33-39 KNIGHTSBRIDGE

After a temporary hiatus when the Mayor called a halt due to the lack of provision of affordable housing, piling is again proceeding on the 33-39 Knightsbridge site and is due to complete in September after which excavation will begin. A concrete slab will be built at ground level, to act as a gantry for equipment during the excavation.

This will enable vehicles to excavate the basement from within the confines of the site. The excavation works are targeted for completion in the third quarter of 2019.

## LANCELOT PLACE

### 15 Lancelot Place | Trevor Walk

After considerable hold-ups in the redevelopment of this site, demolition finally took place in August followed by excavation works. The next Community Liaison Group will be held at 6.30 on Wednesday 12th September. Details of the venue were to be circulated by the end of the month.

### 3-11 Lancelot Place

The demolition of the five properties at 3-11 Lancelot Place has now been completed, and site and soil investigations will shortly begin, which will assist in the development of the foundation design and excavation procedure, as well as the detailed design of the structures.

During this investigative phase, the level of activity on site will be reduced but coordination with surrounding sites, including 15 Lancelot Place, will continue. On completion of 15 Lancelot Place's demolition, arrangements have been made to carry out a joint exercise of piling and excavations.

Following the assessment of the ground conditions, throughout the continuing development of the detailed design and prior to the commencement of works above ground, High Point Estates are continuing dialogue with WCC to explore possibilities of improving the design and quality of the approved scheme.

## PENINSULA HOTEL LONDON

The Peninsula London is coming to Grosvenor Place, where it replaces the dreary 1950s and 1960s post war offices. Currently a vast hole in the ground, it will provide all the usual facilities of a world class hotel. Hopkins Architects have come up with an elegant design which will greatly improve this part of Hyde Park Corner. By the time this newsletter is sent out piling will be complete and work will be continuing on the concrete frame and excavation. Completion is anticipated for 2021.

## OTHER DEVELOPMENTS

### The Natural History Museum



*An artist's impression of the redeveloped grounds.  
Image: Picture Plane.*

The Association was invited recently to view the new design concepts for the Natural History Museum's Gardens project. The main change from the previous design is the removal of the built structure in the East Garden which required the removal of many tons of topsoil and an equally large excavation in the West. Step free access into the Museum's Gardens will be via a gently sloping ramp up from the TfL tunnel from South Kensington Underground station and from Exhibition Road down via a winding path through 'Jurassic' planting.

Reducing environmental impact was one of the aims of the project along with ensuring buildability and long-term maintenance of the site, improving value for money, improved functionality for visitors and activities, and a better balance of capital build and visitor programming and interpretation. The redevelopment of the Museum's five acre site aims to:

- Engage audiences with the NHM's big narratives of deep time, living diversity and a sustainable future
- Inspire participation in local and national wildlife programmes across the UK
- Enhance the architectural and natural heritage of the South Kensington site
- Improve access to the site for visitors and limit potential disruption for the local community

Local residents' associations will remain involved with the design process.

### PRINCES GARDENS

#### Imperial College Day Nursery

As we go to press, the outcome of their planning application to increase the number of children, and to extend the garden/playground and the hours it is used, has yet to be determined. The Association has made a number of representations in order to prevent further erosion of the amenity of neighbouring residents.

#### St Nicholas Montessori School

The proposal to move the school from their current location in Princes Gate (facing the Park) to the quieter location of Princes Gardens, and to greatly expand the numbers has been met with dismay from neighbouring residents.

This application too is awaiting a decision from the Council. We understand that sensibly it is proposed to consider both the above applications at the same planning applications committee.

### SOUTH KENSINGTON ESTATES (SKE)

South Kensington Estates tell us they have secured vacant possession of the shop units between 197-205 Brompton Road to allow the development of a new 15,000 sq ft flagship retail store at the "Brompton Gate" property. Planning consent was granted in February 2017 for the scheme

which they hope will improve the streetscape and provide an anchor destination store for the eastern end of the estate. They are currently tendering the building contract and anticipate that works will begin on site in October at the earliest, to complete in late Spring of next year. They have received positive interest in the new development from several retailers. Prior to the start of the building works they will use the vacant space for a programme of exhibitions during London Design Festival (15th - 23rd September), with the theme of "Material Consequences". Amongst the exhibitors will be a stand showing the architect's design for the building's redevelopment. SKE will circulate details of the final programme and tell us 'any of your members are most welcome to visit'.

## HANS CRESCENT

In the Spring newsletter, we commented on an application by Harrods and Carraig Investments (owners of the property on either side of the pedestrianised section of Hans Crescent). The plans, as we said, had much to recommend them, however we objected to the proposed flower kiosk and subsequent vegetable stall, as the Council had always assured us that commercial enterprises would not be allowed to colonise the space. At the time of going to press the application had not been determined. The KA has now agreed a programme of quarterly meetings with Harrods management to enable us to be fully informed of upcoming Licensing and Planning applications.

## SOUTH KENSINGTON STATION

We are currently awaiting further news of the development proposals which are being worked up by TfL with Native Land, their joint venture partner and architects, Rogers Stirk Harbour and Partners.

## BROMPTON ROAD CAFES

We continue to be concerned by the number and activity of cafés on the north side of Brompton Road, which cause so many problems with stained pavements, sacks of rubbish and litter.

### 102a Brompton Road

In the Spring newsletter we commented on a planning application for a new shopfront at 102a Brompton Road - formerly the National Geographic Society shop – which appeared to

show a new café with seating for 75. We pointed out to the Council that this would need an application for change of use. An application for change of use to *sui generis use* was submitted, but withdrawn.

### 176 Brompton Road

Formerly the Luna Café, this has acquired a new shopfront and opened under new ownership.

## HYDE PARK AND KENSINGTON GARDENS

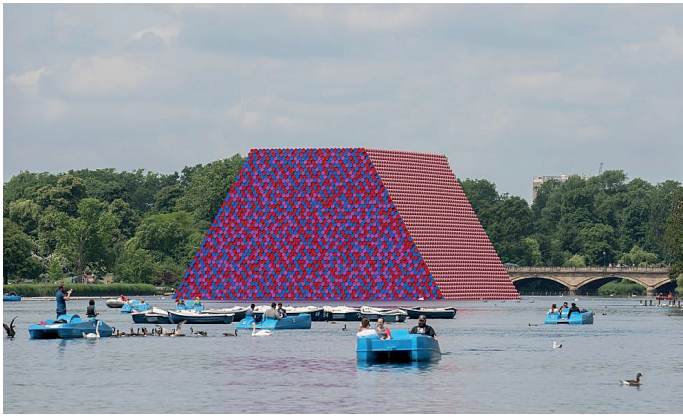
As anticipated, following the use of the Football pitches and South Carriage Drive to 'facilitate' the Commonwealth Heads of Government Meeting, the much-needed returfing was carried out to high standard, although sadly the section nearest to Will to Win sports centre was not included.

## Serpentine Galleries Summer Pavilion



© Frida Escobedo, Taller de Arquitectura,  
Photography © 2018 Iwan Baan

A last opportunity to visit the 2018 Pavilion designed by Mexican architect Frida Escobedo – open until 7th October.



## Sculpture on the Serpentine

In June, Bulgarian born artist Christo completed The London Mastaba, a 20-metre-high sculpture floating on London's Serpentine Lake, which represents his and late wife Jeanne-Claude's determination to make art free.

Based on the trapezoid shapes of mastaba, an Arabic word for bench given to Egyptian tombs and seats

found outside homes in ancient Mesopotamia, the temporary sculpture is the realisation of the artistic duo's shared dream of creating a floating version of a form that has fascinated them for half a century.

The Royal Parks has worked very closely with Christo and his team on this project and as a result The Serpentine Lake will benefit from substantial investment after the sculpture has gone. This includes ecological improvements on Serpentine Island and creating new habitats, including terrestrial invertebrate habitat creation, waterfowl refuges, heron baskets and bird and bat boxes. Works will improve conditions in the lake, including litter clearance and the re-treatment of Phoslock on the lakebed, to reduce the growth of harmful algae, and are scheduled to take place at a time to cause minimal disruption to wildlife and habitats. The London Mastaba, which is made of 7,506 brightly painted barrels secured to scaffolding and anchored in the lake, was entirely self funded and is free to view by all.

## EVENTS

6–15 July

Hyde Park British Summer Time concerts

Featured stars such as The Cure, Eric Clapton and Paul Simon over the two weekends, whilst also providing screens and space for 30,000 people to watch the semi-final of the World Cup between England and Croatia in the afternoon of the 11 July.

8 and 9 September

Proms in the Park and Radio 2 Live

Winter Wonderland

Will run from Saturday 17 November 2018 to New Year's Day 2019, with all the usual attractions and several newcomers.



*Paul Simon played the last show in his farewell tour to a packed-out Hyde Park*

## Valete

It is with very great regret that we learn Edward Davies-Gilbert is moving out of the area and is therefore standing down after eight years as chairman of the Planning and Conservation Committee. We thank him for his enormous contribution and knowledgeable input into the work of the work of this important committee.

# LICENSING REPORT

*Paul Meitner*

It's been a relatively quiet period for applications, although several have caused concern.

## McDonalds, 177 Brompton Road

We reported in the Spring newsletter that despite our representations the application to bring forward the opening hour to 5 a.m. had been granted. Since then there have been persistent reports of late night noise and rubbish disrupting the lives of local residents. Together with Councillor Marshall and other concerned residents, the KA lodged a complaint to RBKC's Licensing Committee, in the hope that enforcement action will be taken.

## Temporary Event Licences

A number of establishments including McDonalds have repeatedly obtained temporary licences to extend opening hours this summer, usually at weekends when there are more visitors to the capital. Despite the disruption to local residents the only people who can object are the police, who hardly ever do. We continue to monitor the effects of these licences so we can report their cumulative effect, as and when the establishments concerned do make applications that require public consultation and approval.

## 7 Montpelier Street – formerly Al Hamidieh

The premises closed and have re-opened under a new name.

Their activities are currently under investigation by RBKC officers.

## Tables and Chairs

Another long running issue, in particular on narrow streets with significant footfall. We closely monitor any changes in the number of tables and chairs placed on the pavement, as well as the hours they are put out, and report any infringements.

## Rats



The problem of vermin has been particularly evident in recent months on the north side of Brompton Road, where it meets Montpelier Street. The suspicion is that some restaurants and cafes have been leaving food waste in black bags on the pavement, rather than disposing of it in an authorised manner. We consulted with the Environmental Health team at RBKC and they have been keeping a close eye on the trouble spots.

# TRANSPORT AND ENVIRONMENT REPORT

Caroline Burke

---

## TfL AND THE LETHAL BROMPTON SQUARE CROSSING

The Vision Zero action plan, which has been published recently by TfL, along with the Mayor of London and the Metropolitan Police Service, sets out an ambitious strategy to eliminate all deaths and serious injuries and make London's roads safer. Unfortunately, when the KA met with representatives from TfL, who admitted that the traffic lights needed replacing and that the phasing did not allow safe passage for pedestrians we were told that there was no money available. It was pointed out that within one year a woman was left with life-threatening injuries and another killed.

In light of this, KA wrote to TfL in January 2018 to ask what remedial action they were proposing. A holding response was received, but nothing further. We wrote again in May and June and finally received the following on 8 August:

*Thank you for your email correspondence of 31 July 2018 regarding concerns about the traffic lights and crossing at Brompton Square on Brompton Road. I appreciate the time you've taken to raise your concerns with us and I'm sorry for the inconvenience caused.*

*There was a site meeting between a member of the executive committee for Knightsbridge association and TfL representatives where this matter was discussed.*

*The upgrade of this crossing is something we would very much like to do and since the meeting we have started initial investigations.*

*These investigations have resulted in a cost estimate that is higher than originally thought. This is due to the crossing requiring a full upgrade of equipment. As previously explained, we currently do not have a signal modernisation budget and so the cost for this work has to be met from our Healthy Streets budget which is already committed to other schemes this year.*

*However we will carry out the feasibility design work this year with the aspiration of implementing the scheme next year, subject to the funding being available.*

*Thanks again for contacting us. If there is anything else we can help you with, please reply to this*

*email. Alternatively you can call us on 0343 222 1234 and we'll be happy to help you,*

*Kind regards,*

As TfL is facing major financial challenges the likelihood of 'funding being available' is open to question. Falling income from fares (13 million fewer tube journeys); the loss this year of its government grant of £700m a year and the freeze on fares from 2017 to 2020 implemented by Mayor Sadiq Khan costing another £640m over four years – all this puts their future business plans at risk. Here is a clear example of ordinary citizens having to live with the consequences of irresponsible gestures made by elected politicians.

## OXFORD STREET

Although outside the 'KA Zone', the proposed pedestrianisation of Oxford Street would have had profound consequences for neighbouring areas, including Knightsbridge, a sentiment expressed forcefully in responses to the consultation. After due deliberation, WCC formally decided not to proceed. The Mayor of London criticised the decision and the Council has agreed to review their proposals and have now started work on detailed plans for the area to transform it into a "global, iconic destination". Proposals include "more space for people to enjoy new and reinvigorated public places that are greener, less polluted and seamlessly connected to each other and the wider West End".

A public consultation is expected to be held in November this year.

## VEHICLE IDLING

Complaints have fallen and, with modern engine technology, emissions are decreasing. However we continue to remain vigilant. Signs have been put up in Montpelier Square and Lancelot Place/Raphael Street and a further action day is planned for the Autumn.

## STREET CLEANLINESS

As mentioned in the Chairman's opening remarks, conditions in and around Montpelier Street continue to deteriorate but we are pleased to report that in Raphael Street a new bin and more street-cleaning has greatly improved the



*Montpelier Street - Piles of rubbish dumped by various cafes.*

situation. We wish to convey grateful thanks to our Councillors for the deep cleaning of the pavements in Lancelot Place and Raphael Street.

However, rubbish produced by the profusion of cafes and restaurants, particularly in Brompton Road, is causing a serious vermin issue. RBKC are addressing the problem but the situation needs monitoring – see page 7.

Since Tom, our excellent WCC street monitor was relocated to Soho without a replacement, enforcement has declined dramatically, a situation needing an urgent solution.

#### SPEEDING

The Transport and Environment Committee is investigating the possibility of installing a radar-operated speed-warning sign in Knightsbridge to deter speeding motorists.

#### TRAFFIC AND PARKING ROUND HARRODS

RBKC have proposed a trial scheme to address the congestion caused by taxis around Hans Road and Basil Street. The plan is to extend the pavement at the junction of Hans Road and Brompton Road which will mean that taxis cannot park on that corner and should make it safer for pedestrians crossing the road. The single yellow line in front of the taxi rank on Hans Road will be increased which will provide a larger dropping off area. A yellow-box marking will be introduced at the junction of Hans Road/Basil Street/Walton Place, which will make it an offence to block that junction. Residents bays outside 27 to 31 Basil Street will be suspended to provide a temporary feeder taxi rank for 5 taxis with a view to making this

rank permanent if it is successful. It is hoped that this will stop the queuing of taxis down Basil Street and allow the traffic to flow freely.

#### BUSKING

RBKC have instigated a general consultation on Street Entertainment.

We are hopeful that the Council will make a PSPO to address excessive levels of noise and nuisance to local residents and business.

#### BEGGARS

As usual we have seen an increase in begging over the summer months. The beggars are not in



the numbers they once were as the police and WCC have cracked down and been quick to move them on or arrest them. They usually operate in organized groups and WCC have urged anyone with any information to contact them.

Any Westminster issues are best reported on WCC website "ReportIt" [www.westminster.gov.uk/report-it](http://www.westminster.gov.uk/report-it) or via the Environmental Action Line (020 7641 2000)

RBKC issues: [www.rbkc.gov.uk](http://www.rbkc.gov.uk), and report under the Popular Links list.

# LAW AND ORDER REPORT

*Dr John Pollard*

In July, our Law and Order Committee met at the usual venue. We were pleased to welcome Sgt. Helen Lomas of the Serious Crime Squad based close to Charing Cross Station.

Her presentation was most informative and made clear the difficulties faced by the Police, such as young single Mothers with babies in prams that were concealing either drugs or weapons. Sgt. Lomas pointed out that the problem was multi-factorial and encompassed education, peer pressure, examples from reformed gang members, family involvement and school involvement.

## Knife Crime

Some examples of the knives used were given, but the cheery news was that the numbers of knife deaths was falling. Stop and search, "Knife arches" (similar to airport security arches) were having an effect. Also useful were targeted raids based on intelligence-related Warrants were proving successful with 84 arrests in the recent weeks. The intelligence was so successful that the vast majority of those arrested had to plead guilty, so damning was the evidence.



There were no specific areas where crime was centred, and all schools in London had been involved to one degree or another. Ethnic groups also were not the problem, as the majority of drug use was organised by white criminals, targeting black minorities as "foot soldiers."

## Supercar Sunday

July 15th witnessed a "Supercar Sunday" in Sloane Street.



Despite vigorous protests from those opposed, it proved impossible to ban this event. The Police attempted several times to involve the organisers, but to little avail.

Police presence was stiff, with several Inspectors, many Police Constables, motorcycle Police and the ominous presence of a tow truck.

In the main, the event was very peaceful, with most owners wishing to show off their cars and refraining from public nuisance. The general public seemed to enjoy watching these cars, and only one seizure resulted. The Police were keen to hand out information about anti-social behaviour, and pointed out that had they blocked streets, the cars would just have gone elsewhere.

Let us hope that better communications will in the future help manage the event for the good of all.

## Moped theft

Moped theft and theft from cars continues apace, with little geographical limitation. Wherever there are crowds sporting expensive watches, mobile telephones or jewelry will attract criminal elements to attempt theft. The use of "Smart Water" sprayed at a distance has proved its value and the first case of this identification system after 3 months has already gone to court and been successful. The Police have responded with slim motorbikes, which can follow moped riders down narrow alleyways.

The usual numbers of thefts from cars, thefts of cars and thefts from houses are fairly steady, despite numerous attempts to alert visitors to close windows, lock doors, use alarms, be aware of remote-unlocking devices and being alert.

OWL is a system used by the Police to inform local communities to be alert and report suspicious behaviour. We find it very useful and not at all intrusive and highly recommend adoption by all.

The Commonwealth Event in and around Hyde Park went off smoothly, the various parades and marches to the east of us down Piccadilly seemed to pass without difficulties and generally, our status quo is being maintained.

# COUNCILS

WCC councillors Rachael Robathan and Tony Devenish conducted a second Knightsbridge ward surgery outside Bonhams. Residents were leafleted by the Council and details were posted on the KA website. A number of local concerns were raised which councillors and officers promised to look into. We are delighted to report that following the June surgery with WCC, the undulating pavement outside Bonhams has been straightened out at last!

In early September committee members were due to meet RBKC Brompton and Hans Town



councillors, Mary Weale, Walaa Idris and Sophie McVeigh in Hans Crescent to highlight local concerns. They have also initiated surgeries for RBKC residents which will take place monthly on the first Wednesday.

## Knightsbridge Referendum on 18 October

We need your help with the Referendum

Westminster City Council has confirmed that the Referendum on the Knightsbridge Neighbourhood Plan (the 'Plan') will be held on Thursday 18 October 2018. We are the first of 17 neighbourhood forums in the City of Westminster to reach this exciting point!

The Knightsbridge Neighbourhood Plan has been developed by the Knightsbridge Neighbourhood Forum over more than three years and after two public exhibitions, two statutory public consultations and an independent planning examination. Most importantly, it would support retention of the Hyde Park Barracks and frame any redevelopment there. It would also encourage retail shops and manage cafés, mitigate construction activity, reduce air pollution, maximise the benefits of trees and ensure that at least 25% of the Community Infrastructure Levy is spent locally. You can see the Plan at [knightsbridgeforum.org](http://knightsbridgeforum.org).

Following a successful Referendum, the Plan would become part of the statutory development plan and be used alongside the Council's own planning documents and the Mayor's London Plan in determining planning applications.

We need your help to raise awareness of the Referendum and encourage people to 'Vote Yes'. Anyone on the electoral roll whose address is within the Knightsbridge Neighbourhood Area is

already registered to vote. The closing date for registering to vote, if you're not already registered, is midnight on Tuesday 2 October and the last time to request a postal vote, if you haven't already, is 5pm on Wednesday 3 October. The polling station will be Kent House in Rutland Gardens. You can find out more about voting at [knightsbridgeforum.org/vote-yes](http://knightsbridgeforum.org/vote-yes).



*Kent House*

Please note that people can be registered to vote in two different local authority areas if they spend roughly the same amount of time in each. People renting can also vote. People can only vote once in a UK general election.

Please contact the Forum if you'd like to get involved or have any questions at [knightsbridgeforum.org/contact](http://knightsbridgeforum.org/contact). We're keen to hear from you.

# KA EVENTS

## This year

### Pimm's and Bowls Evening



Members and their guests gathered on 10th May at the Hyde Park Tennis Club for a Pimm's and Bowls tournament organised by Madeline Elsdon. We were divided into five teams and coaching was provided by a member of the British Commonwealth Bowls Team. Even though most of us hadn't played before it was still great fun as no one minded making fools of themselves. Fortunately the sun shone as we enjoyed large jugs of Pimm's and plentiful refreshments. Everyone had a good time socialising with neighbours and their friends. We plan to hold more fun events in future.



## Chevening

The visit to the Foreign Secretary's official country residence, fully booked, takes place on 11th September and will be reported in the Annual Report.

## Next Year

### Annual General Meeting Monday 14 January 2019

Thankfully, in spite of the sudden fire which broke out as refurbishment was completed at the Mandarin Oriental, the hotel is due to be fully operational in the Autumn and we are still on course to hold the 2018 Annual AGM in the Ballroom in January. We are extremely grateful to the Mandarin for hosting us once again.

### Hyde Park Super Nursery

We have arranged for a private visit and reception at the Nursery next year in mid-May just before the almost half a million plants go out to the eight royal parks, and various other destinations. Details will be sent nearer the time.

### Future event we hope to hold:

#### SIWWMF

For those with a fascination as to what happens to our recycling, we are arranging a visit to Southwark Integrated Waste Management Facility operated by Veolia in the Old Kent Road early in the New Year. Details to follow nearer the time.

If you have any suggestions for events that you would like us to try to arrange, please do send them in to [carol.seymour-newton@knightsbridgeassociation.com](mailto:carol.seymour-newton@knightsbridgeassociation.com)

I hope you all enjoyed a refreshing summer break and look forward to meeting and talking with you over the coming weeks.

*Melville Haggard  
Chairman*