



# Surrey Training Hub

WHATS ON | ISSUE 4 | JULY 2023

## Welcome

Surrey Training Hub is your 'go to' place for any information about primary care workforce, education, training and development.

### National events - 2023

World Lung Cancer Day: 1st Aug

World Breastfeeding Week: 1st -  
7th Aug

Summer Bank Holiday - 28th  
Aug

[More Info](#)



### Protected Learning Time (PLT) Application Process (click for more)

As of June last year, the application process for individual GP surgery closures changed. Please ensure that you are using the most recent application form and that you are aware of the cover times.

# Clinical Training

Limited spaces are still available for the following training and dates:

## **Immunisation Training (2 DAY) for HCAs, Paramedics & Pharmacists**

<https://www.eventbrite.co.uk/e/immunisation-training-2-day-for-hcas-paramedics-pharmacists-tickets-540988510197?aff=oddtcreator>

2nd & 3rd August 2023 9:30 – 17:00. Limited spaces still available for Immunisation Training 2 Days for HCA's, Paramedics & Pharmacists Training (Virtual).



## **Ear Irrigation Foundation Training - Face to Face**

<https://www.eventbrite.co.uk/myevent?eid=630068139767>

2nd August 2023 9:30 – 16:30. Spaces still available for Ear Irrigation Foundation Training (Face 2 Face).

## **Asthma & COPD Foundation for Registered Clinicians (3 half days)**

<https://www.eventbrite.co.uk/e/asthma-copd-foundation-for-registered-clinicians-3-half-days-tickets-609589798497?aff=oddtcreator>

5th, 12th & 19th September 2023 9:30 – 13:00. Spaces available for 3 half day Asthma & COPD training, aimed at New GPNs and HCPs in a similar role (Virtual).

## **Anticoagulation Foundation**

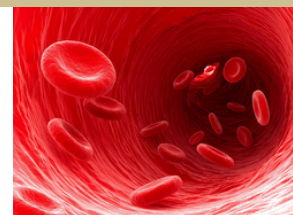
<https://www.eventbrite.co.uk/e/asthma-copd-foundation-for-registered-clinicians-3-daysday-2-tickets-609644321577?aff=oddtcreator>

28th September 2023 9:00 – 13:00. Book your place for Anticoagulation Induction Day for GPs, Nurses, HCAs and all clinical staff (Virtual).

# Clinical Training

## Foundation Immunisation (2 DAY) For GPNs & NAs (Incl Childhood Imms)

<https://www.eventbrite.co.uk/e/669278880147>



21st & 22nd September 2023 9:30 – 16:00. **\*\*LAST SESSION OF 2023\*\*** Foundation Immunisation 2 DAY For GPNs & NAs. Incl Childhood Imms (Virtual).

## Anticoagulation and DOAC Update - Virtual

<https://www.eventbrite.co.uk/e/629849997297>

4th October 2023 9:00 – 13:00. Spaces available for Anticoagulation and DOCA Update Training (Virtual).

## Leg Ulcer: Compression Bandaging & Doppler Theory

<https://www.eventbrite.co.uk/e/673057070817>

12th October 2023 9:30 – 12:30. Leg Ulcer Compression Bandaging Training. Includes Doppler theory but must have already had Leg Ulcer Training (Face 2 Face).

## Immunisations Update for Nurses & NAs - Incl Childhood Imms

<https://www.eventbrite.co.uk/e/673220680177>

25th October 2023 9:30 – 16:30. Immunisation Update Training for Nurses & NAs (Virtual).

## Immunisation Update for HCAs, Paramedics & Pharmacists)

<https://www.eventbrite.co.uk/e/673266968627>

26th October 2023 9:30 – 16:30. Immunisation Update Training for HCAs, Paramedics & Pharmacists (Virtual).

# Clinical Training

## Discovering a Career in General Practice Module (CNo 002)- South East Region

### About the module

This is a national single module for Registered Nurses, pre-registration Nurses, Nursing Associates and Trainee Nursing Associates who are considering a career in Primary Care/General Practice. Learners with little or limited experience in that setting will gain an understanding of Primary Care/General Practice and gain some introductory skills to complement their existing transferable skills.



### The details:

- Short (3 month) module aimed at the nursing workforce who are considering a career in Primary Care/General Practice
- Nurses and NAs working in other settings, Pre-reg nurses and Trainee Nursing Associates
- Learners will gain an understanding of Primary Care/General Practice, and some introductory skills to complement their existing transferable skills
- Provides an opportunity to find out about: working in the Primary Care/General Practice setting; the extent of the learning needed to become fully qualified/experienced; and to be able to demonstrate that understanding
- Does not replace the learning needed to become fully qualified/experienced

For further information, please contact: [anneke.biginton1@nhs.net](mailto:anneke.biginton1@nhs.net)

## NHS funded Community Pharmacy training offers

New, fully funded, flexible training for community pharmacists is now available to help expand your clinical skills and improve patient care:

[Community Pharmacy Training Page](#)

# Clinical Training

## Cancer Training

### Cancer as a long-term condition for social prescribers

<https://www.eventbrite.co.uk/e/522524243077>



Learn more about the changing story of cancer, why for many we may think of it as a long term condition and how you can support those living with and beyond cancer with their health and wellbeing.

### St Luke's Cancer Centre Open Day

<https://www.eventbrite.co.uk/e/640488166347>

See the patient journey from behind the scenes; tour the treatment areas hear from key MDT speakers and meet and network with other local professionals over a free lunch.

### Continence & Intimacy after Cancer - Long Term Effects of Cancer Series

<https://www.eventbrite.co.uk/e/672983370377>

Explore the long term effects that cancer may have on pelvic health, continence & intimacy, how to support patients and when to refer.

### Mental Health and Trauma after Cancer - Long Term Effects of Cancer Series

<https://www.eventbrite.co.uk/e/680123516747>

Explore the long term effects of cancer on peoples mental health and potential experience of trauma.

### Macmillan Cancer Pathway Interface Programme – On Demand Webinar Collection

[Macmillan Cancer Pathway Interface Programme - YouTube](#)

Catch up or rewatch our recent webinars on all things cancer CPD



# Clinical Training

## Frailty training

Frailty Champions Training (tier 2)

Duration: 16 x 1 hour sessions

Staff group: All staff working with patients over 65 years at risk of frailty



### Session Overview:

The number of people over 65 years is increasing therefore it is more important than ever for everyone to have knowledge of identifying frailty in its early stages, managing frailty and supporting families/carers (who may have frailty themselves).

Guildford & Waverley Frailty Academy run a 16 week training programme delivering the competencies set out at Tier 2 of the NHS Frailty Core Capabilities Framework. Tier 2 is for Health and social care staff and others who regularly work with people living with frailty but who would seek support from others for complex management or decision-making. Each session is delivered by a subject matter expert.

### Sessions covered are:

Concept of Frailty / Comprehensive Geriatric Assessment / Falls / MSK / Polypharmacy / Dementia and delirium / Anxiety and Depression / Nutrition and Swallow / Continence / Skin Integrity / Moderate frailty, rehabilitation & Milford Integrated Care Hub (MICH) / Severe frailty management out of hospital / Severe frailty management & anticipatory care / MDT and frailty research / Ageing well and families and carers.

We encourage all delegates to attend the full course, complete a final assessment (1 hour), deliver frailty awareness training and some practicals relating to patients with frailty. Delegates become a 'Frailty Champion'.

Staff not able to do the full Frailty Champions training, are welcome to attend all or some of the sessions that are most relevant to them.

Delegates are expected to have already completed frailty tier 1 training which is available as a powerpoint learning pack from the Frailty Academy or can be accessed on the e-learning for healthcare website [here](#).

The programme is delivered by the Guildford & Waverley Frailty Academy therefore some content relates to local referral pathways. Staff from other areas should be aware of this as their local processes may differ.

This session will be held virtually each Tuesday between 1pm and 2pm. The link will be emailed from the Frailty Academy and an email sent out prior to each session to confirm that week's topic.

Email: [rsch.frailtyacademy@nhs.net](mailto:rsch.frailtyacademy@nhs.net)

Next start date: 8 August 2023

# Clinical Training

## Knowledge Exchange Event: Understanding and Managing Behavioural and Psychological Symptoms in People Living with Dementia

Are you a healthcare professional working with people who experience behavioural and psychological symptoms of dementia?

More than 90% of people with dementia will experience BPSD (Behavioural and Psychological Symptoms of Dementia) at some time during their illness.

Join us for an exciting virtual knowledge exchange event on:

**Thursday, 28th September 2023 from 1-2 pm.**

During this informative and engaging event, you will learn about:

- The clinical guidance and key medication prescribed for this condition
- The implementation of the clinical guidance from the General Practitioner perspective
- Practical application of the resource pack from the carer's perspective

Don't miss this opportunity to network with colleagues, share ideas and gain insights on supporting people living with dementia, their families and carers.

To sign up click [here](#)

If you have any issues with the registration for this event – please contact:

[nicola.mundy2@nhs.net](mailto:nicola.mundy2@nhs.net)



# Non-Clinical Training

## Induction Session for Multi-Professionals New to Primary Care (Sessions run monthly starting from June-December 2023)

### Our Aim:

To provide a supportive and informative environment through ongoing sessions for individuals entering the field of Primary Care.

### Who is it For:

The session is designed for staff who are new to Primary Care, specifically targeting those who have recently started their positions. However, we believe that even staff members who have been in their roles for a few months may also benefit from participating. Sessions are to complement your local induction at practice level.

### The programme includes:

- Introduction to Primary Care
- How the Training Hub supports you – booking training, funding, meet the team
- Population Health & Health Inequalities
- Introduction to Equality, Diversity & Inclusion
- Library & Knowledge Services
- Whistle Blowing Policy
- Health & Wellbeing Awareness

### To Book:

[Click here to book onto a session](#)





# Non-Clinical Training

## GPA

Expressions of interest open for the next GPA Cohort beginning 2023

[EOI General Practice Assistant](#)

GPA framework is an experiential course that is led by a GP in practice. The training course is a six month practical course, delivered in practice by a GP mentor.

[For more information click the link](#)



# Funding

## GPN Fellowship

We are looking for a new cohort to join our GPN Fellowship, aimed at newly qualified or new to primary care General Practice Nurses. For further information and application:

<https://www.surreytraininghub.co.uk/fellowships#GPN>.

**Deadline: 1 September**



## GP Fellowship

Next cohort for Newly Qualified GPs starting in September. Please click here to view our website and apply: <https://www.surreytraininghub.co.uk/fellowships#GPnew>

## Funding available for Continued Professional Development CPD

CPD funding and support (up to £1000) is available for both clinical and non clinical staff working in Primary Care.



[Apply Now](#)

# Leadership

## Aspiring Mental Health and Learning Disabilities Leaders Leadership Programme Cohort 3

The Florence Nightingale Foundation along with NHS England (South East) are pleased to offer a leadership programme to band 6 to 7 Aspiring Nurse Senior Leaders working in the Mental Health and/or Learning Disability environment.

To apply for this opportunity, please write a statement (one or two paragraphs), attached as a word document, detailing the reasons for your application and the name of the manager in your organisation who is supporting your application. Please also attach your CV, which must detail your NMC registered field of nursing (MH and/or LD) (and NMC expiry date). You do not need to complete an application form. Please note this opportunity is only available for NMC Learning Disabilities and / or Mental Health Nurse Registrants.

Please send your applications in an email to:

Yvonne Izzard (Project Support Co-ordinator, Maternity and Neonatal Programme) at:  
[yvonne.izzard@hee.nhs.uk](mailto:yvonne.izzard@hee.nhs.uk)

If you have any questions, please direct them to Yvonne Izzard ([Yvonne.Izzard@hee.nhs.uk](mailto:Yvonne.Izzard@hee.nhs.uk) and Dr Karen Harrison-White (Programme Lead – Nursing (SE)) ([Karen.Harrison-White@hee.nhs.uk](mailto:Karen.Harrison-White@hee.nhs.uk)) Applications must be made by **24.08.2023**. We will not be able to accept late submissions. There are only 25 places; we will let you know the outcome of your application after the deadline.

## Submitting an article for August

If you wish to submit an article for consideration in the August Training Hub Newsletter, please do so by 10am, on Tuesday the 22nd August to:

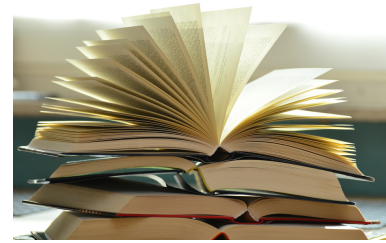
[syheartlandsicb.surreytraininghub@nhs.net](mailto:syheartlandsicb.surreytraininghub@nhs.net)



# Further Resources

## Resources

### Your Evidence Librarians



Your Evidence Librarians, Kerry Seelhoff and Olwen Revill, can source relevant evidence for you to save you time & effort. Request an Evidence Search here or email [Kerry.Seelhoff@nhs.net](mailto:Kerry.Seelhoff@nhs.net) or [Olwen.Revill@nhs.net](mailto:Olwen.Revill@nhs.net)

### Royal Marsden Manual of Clinical and Cancer Nursing Procedures

Royal Marsden Manual of Clinical and Cancer Nursing Procedures is now available online with a OpenAthens username and password. The Manual includes over 350 evidence-based clinical procedures, from handwashing to cardiopulmonary resuscitation. If you don't already have a OpenAthens account, complete the registration form using your NHS email address and select 'GPs and Practice Staff in London, Kent & Surrey' as your organisation. Any problems email [Kerry.Seelhoff@nhs.net](mailto:Kerry.Seelhoff@nhs.net) or [Olwen.Revill@nhs.net](mailto:Olwen.Revill@nhs.net)



### GPN National Update: Monthly Webinar

This webinar is scheduled to take place on **04 August 2023 from 13:00 – 14:00** via Microsoft Teams. Jointly run by NHS England, National Association of Primary Care (NAPC) and the Royal College of Nursing (RCN).

We encourage all nurses working in General Practice to join us as an opportunity to share best practice and for your voice to be heard by the national team.

The RCN GPN forum are delighted to welcome you to this webinar. Microsoft Teams meeting [Join conversation \(microsoft.com\)](https://www.microsoft.com/join-conversation)

There is also a further webinar on **01 September 2023 from 13:00 – 14:00** via Microsoft Teams Microsoft Teams meeting: [Join conversation \(microsoft.com\)](https://www.microsoft.com/join-conversation)

# Further Resources

## Nurses in General Practice: What they do and why they matter

How GPNs create value Research commissioned by NHS England and NHS Improvement and completed by Sonnet Advisory & Impact in collaboration with Sheffield Hallam University in Spring 2021\* has, for the first time, explained what it is about GPNs that is so valuable and that makes them such a key part of general practice today and a vital component in the planned development of the NHS.

Please see link below to view the Sonnet report summary:

[Microsoft Word - Nurses in general practice\\_Summary\\_FINAL DRAFT v1 \(sonnetimpact.co.uk\)](#)

Please take some time to complete the following survey:

[NHS England 'Leading the Way' Survey Final \(snapsurveys.com\)](#)

All general practices in England are invited to take part in the Leading the Way survey. The survey explores the role of the practice nurse and alternative staffing models where nurses are not present in practices.



Thank you for reading, the Surrey Training Hub team







# Meet the Team

## Spotlight on: NJaimeh Asamoah-Owusu, GP Tutor for East Surrey

### **1. What does your job involve?**

I am GP Tutor for East Surrey which involves putting together training and educational events for Primary Care locally. I oversee the GP Development Fund and the GP Academic Fellowship within the Training Hub.

### **2. How long have you worked in the NHS/Training Hub.**

I qualified as a Doctor 25 years ago and have worked in the NHS since then. I have been part of the Surrey Training Hub since April 2022.

### **3. What is your favourite book or song?**

I will read pretty much anything put in front of me! I am a fan of Agatha Christie so have a tendency to go back to her books in between others.

### **4. Favourite holiday destination?**

I love to travel and couldn't pick a favourite as there are so many places that I have yet to explore.

### **5. Dog or cat person?**

My personality is more suited to cats (although allergic so can't actually have one!)

All monthly newsletters can be found on our website, please click here to view:

<https://www.surreytraininghub.co.uk/newsletter-e-bulletins>

