



# Surrey Training Hub

WHATS ON | ISSUE 6 | SEPTEMBER 2023

## Welcome

Surrey Training Hub is your 'go to' place for any information about primary care workforce, education, training and development.

### National events - 2023

Breast Cancer Awareness Month

World Mental Health Day: 10th  
October

World Menopause Awareness  
Day: 18th October

Click on the below box to view  
more events:

[More Info](#)

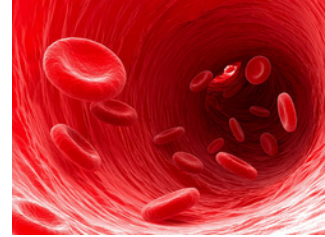


### Protected Learning Time (PLT) Application Process (click for more)

As of June last year, the application process for individual GP surgery closures changed. Please ensure that you are using the most recent application form and that you are aware of the cover times.

# Clinical Training

Limited spaces are still available for the following training and dates:



## **Anticoagulation and DOAC Update - Virtual**

<https://www.eventbrite.co.uk/e/629849997297>

4th October 2023 9:00 – 13:00. Spaces available for Anticoagulation and DOCA Update Training (Virtual).

## **Compression Bandaging Theory For HCAs**

<https://www.eventbrite.co.uk/e/673057070817>

12th October 2023 9:30 – 12:30. Leg Ulcer Compression Bandaging Theory Training for HCAs (Face 2 Face).

## **Compression Bandaging Theory For HCAs**

<https://www.eventbrite.co.uk/e/709363694907?aff=oddtcreator>

12th October 2023 13:30 – 16:30. Leg Ulcer Compression Bandaging Theory Training for HCAs (Face 2 Face).

## **Immunisation Training (2 DAY) for HCAs, Paramedics & Pharmacists**

<https://www.eventbrite.co.uk/e/690807663317?aff=oddtcreator>

12th & 13th October 2023 9:30 – 16:00. Immunisation Training (2 DAY) for HCAs, Paramedics & Pharmacists (Virtual).

## **Immunisation Update for HCAs, Paramedics & Pharmacists)**

<https://www.eventbrite.co.uk/e/673266968627>

26th October 2023 9:30 – 16:30. Immunisation Update Training for HCAs, Paramedics & Pharmacists (Virtual).

## **Venepuncture For All Whom Appropriate To The Role**

<https://www.eventbrite.co.uk/e/717099252167?aff=oddtcreator>

9th November 2023 13:00 – 16:00. Venepuncture For All Whom Appropriate To The Role (Face 2 Face).

# Clinical Training

## **Pill Check & Beyond**

<https://www.eventbrite.co.uk/e/pill-check-and-beyond-tickets-639272289627?aff=oddtcreator>

15th November 2023 9:30 – 12:30. Contraception training for GPs, Nurses, HCAs, Physician Associates, Health & Social Care Practitioners (Virtual).



## **Basic Wound Care for HCAs**

<https://www.eventbrite.co.uk/e/717066945537?aff=oddtcreator>

15th November 2023 13:00 -15:00. Basic Wound Care for HCAs (Virtual).

## **Performing ECG for unregistered staff**

<https://www.eventbrite.co.uk/e/performing-ecg-for-unregistered-staff-virtual-1000-1130-tickets-631595247387?aff=oddtcreator>

21st November 2023 10:00 – 11:30 Performing ECG for unregistered staff (Virtual).

## **Asthma & COPD Update For Registered Clinicians**

<https://www.eventbrite.co.uk/e/705998389187?aff=oddtcreator>

29th November 2023 9:30 – 13:30. Asthma & COPD Update For Registered Clinicians (Virtual).

## **Diabetes Awareness For Unregistered Staff New to Role**

<https://www.eventbrite.co.uk/e/639240263837?aff=oddtcreator>

5th December 2023 9:30 – 12:30. Diabetes Awareness For Unregistered Staff New to Role (Virtual).

# Clinical Training

## Asthma & COPD Update For Unregistered Staff

<https://www.eventbrite.co.uk/e/616449486007?aff=oddtcreator>

7th December 2023 9:30 – 12:30. Asthma & COPD Update For Unregistered Staff (Virtual).

## Asthma & COPD Foundation For Registered Clinicians (3 Half Days)

<https://www.eventbrite.co.uk/e/706723758787?aff=oddtcreator>

12th, 13th & 14th December 9:30 – 13:00. Asthma & COPD Training for New GPNs and HCPs in a similar role (Virtual).



## Training opportunity for Pharmacy Technicians

From 1st August 2023, NHS England has funded CPPE to offer the Accuracy checking pharmacy technician (ACPT) programme for pharmacy technicians working in community pharmacy, NHS hospitals, and in health and justice. A total of 60 NHS England-funded places are available and funding will end when all 60 places have been allocated or by the end of March 2024.

Please see attached more detailed information from CPPE.

[CPPE Accuracy checking pharmacy technician \(ACPT\) programme open for NHS England-funded applications.pdf](#)

## GPN National Update: Monthly Webinar

This webinar is scheduled to take place on 06 October 2023 from 13:00 – 14:00 via Microsoft Teams.

Jointly run by NHS England, National Association of Primary Care (NAPC) and the Royal College of Nursing (RCN).

We encourage all nurses working in General Practice to join us as an opportunity to share best practice and for your voice to be heard by the national team.

The RCN GPN forum are delighted to welcome you to this webinar.

Microsoft Teams meeting: [Join conversation \(microsoft.com\)](#)

# Clinical Training

## NHS funded Community Pharmacy training offers

New, fully funded, flexible training for community pharmacists is now available to help expand your clinical skills and improve patient care:

[Community Pharmacy Training Page](#)



## Sexual health update

Open to all; join via Teams using the links shown below -

Tuesday 17th October 2023, 13:00 - 14:00

Dr Amy Bennett (Consultant GUM and HIV) - talking about GUM update

<https://bit.ly/3OWxxLa>

Wednesday 15th November 2023, 9:30 - 12.30

Pill Check and Beyond

Contraception training for GPs, Nurses, HCAs, Physician Associates, Health & Social Care Practitioners

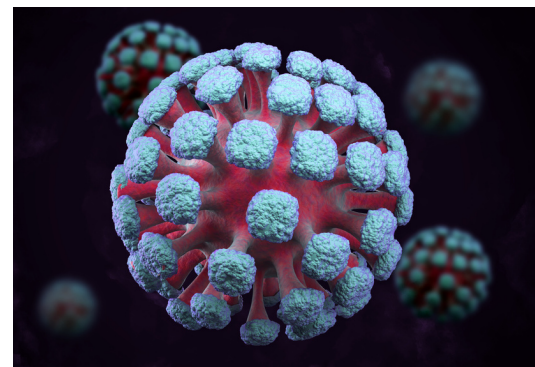
Must be prebooked via with access code: SHL0019

<https://bit.ly/45y5RBM>

Wednesday 29th November 2023, 1pm - 2pm

Dr Torshie Annan (Consultant GUM and HIV) - talking about HIV

<https://bit.ly/45qIXxp>



## E-learning course on Hepatitis B and C

UKHSA has supported an [e-Learning course through Royal College of GPs on Hepatitis B and C](#). The one hour course helps healthcare professionals understand the epidemiology of hepatitis B and C and how to assess the risk of hepatitis B and C for a patient, understand the new treatment options for hepatitis C, know when patients with hepatitis B and C should be referred, or re-referred, discuss testing and giving results, and know how to manage patients with chronic hepatitis before, during and after their treatment.

# Clinical Training

## Educational Webinar: Nursing the problem of AMR using the 5 Rs



This is an invitation for registered nurses to attend an Educational Webinar: Nursing the problem of AMR using the 5 Rs which will take place on Wednesday 18th October.

Antimicrobial resistance (AMR) is a global health threat. In 2019 there were 4.95 million deaths associated with bacterial AMR across 204 countries, and 1.27 million of those were directly attributed to a drug-resistant infection. AMR now kills more people than HIV/AIDS or malaria. The World Health Organisation has stated that in order to effectively address AMR "... all clinicians and health-care workers must become stewards of antimicrobials by prescribing them appropriately and educating their patients and colleagues on the proper use of this increasingly scarce medical resource". So what does this mean for nursing staff and how can they play a role in the AMS agenda?

This webinar will discuss how AMS interventions can be integrated into the nursing role using the 5 Rs and reflect on the benefits to patients, staff and systems on the impact of AMS in a hospital setting. There will be an opportunity to briefly discuss two case studies and consider the benefits of timely IV to oral switch.

**·Date: Wednesday 18th October 2023**

**·Time: 09:30 – 12.00noon (via MS Teams)**

**·Itinerary: The itinerary will be available early September.**

**·Who should attend? This webinar is suitable for registered nurses, including specialist AMS/IPC nurses.**

·Registration: The webinar is available to book via NHS Events. Click on [this link](#) to reserve your seat. An MS Teams Link will only be sent to attendees the day before the event.

Important: Do remember to block the date in your diary and request time off /study leave, as applicable.

Certificates of Attendance will be available to everyone who has completed the webinar.

Cancellation: If you are unable to attend the webinar please remember to cancel your booking as this will allow us to offer your space to someone else.

We look forward to seeing you on the webinar but in the meantime, if you have any queries about the event, please contact a member of the APMO Team on: [england.amrprescribingworkstream@nhs.net](mailto:england.amrprescribingworkstream@nhs.net)

# Non-Clinical Training

## Induction Session for Multi-Professionals New to Primary Care (Sessions run monthly starting from June-December 2023)

### **Our Aim:**

To provide a supportive and informative environment through ongoing sessions for individuals entering the field of Primary Care.

### **Who is it For:**

The session is designed for staff who are new to Primary Care, specifically targeting those who have recently started their positions. However, we believe that even staff members who have been in their roles for a few months may also benefit from participating. Sessions are to complement your local induction at practice level.

### **The programme includes:**

- Introduction to Primary Care
- How the Training Hub supports you – booking training, funding, meet the team
- Population Health & Health Inequalities
- Introduction to Equality, Diversity & Inclusion
- Library & Knowledge Services
- Whistle Blowing Policy
- Health & Wellbeing Awareness

### **To Book:**

[Click here to book onto a session](#)



# Non-Clinical Training

## GPA

Expressions of interest open for the next GPA Cohort beginning 2023

[EOI General Practice Assistant](#)



GPA framework is an experiential course that is led by a GP in practice. The training course is a six month practical course, delivered in practice by a GP mentor.

[For more information click the link](#)

## Making Every Contact Count Train the Trainer Programme (MECC)

Making Every Contact Count is an approach to behaviour change that uses the millions of day-to-day interactions that organisations and people have with other people to support them in making positive changes to their physical and mental health and wellbeing.

Surrey County Council's Making Every Contact Count (MECC) 2 day Train the Trainer Programme is free of charge and aims to equip participants with the knowledge, skills and confidence to deliver MECC Level 1 training within their own organisation. Upon completion, participants must commit to organising and delivering a minimum of three MECC Level 1 training sessions each year.

If you would like to register or wish to nominate a member of your team to take part, please complete the [registration form](#).

## 'Taking Care of Primary Care: 5 Ways to Nature Connection for Workplace Wellbeing with NatureWell'

FREE COURSE! Join Wild Gathering CIC for 3 hours, once a week for 3 weeks to experience the health & wellbeing benefits of nature connection for health professionals at work.

Click here for further details:

<https://www.surreytraininghub.co.uk/taking-care-of-primary-care-wellbeing-with-naturewell>





# Non-Clinical Training

## Quality Improvement Conference: Strengthening Connections to Embrace Change

Are you passionate about driving positive change and improvement? Look no further! Surrey Heartlands ICB cordially invite all improvers and anyone intrigued by the realm of improvement to our upcoming Quality Improvement Conference. Keynote Speaker: Dr Tammy Watchorn, the author of 'The Change Ninja Handbook' \*\* Business Book Awards 2023 Finalist \*\*

Tuesday, 31st October 2023 from 9.30 -4.30 pm Sandown Park Racecourse, Portsmouth Road, Esher, KT10 9UA

[Quality Improvement: Strengthening Connections to Embrace Change Tickets, Tue 31 Oct 2023 at 09:30 | Eventbrite](#)



## Cancer as a long-term condition for social prescribers

<https://www.eventbrite.co.uk/e/522524243077>

Learn more about the changing story of cancer, why for many we may think of it as a long term condition and how you can support those living with and beyond cancer with their health and wellbeing.

## St Luke's Cancer Centre Open Day

<https://www.eventbrite.co.uk/e/640488166347>

See the patient journey from behind the scenes; tour the treatment areas hear from key MDT speakers and meet and network with other local professionals over a free lunch.

# Non-Clinical Training

## Continence & Intimacy after Cancer - Long Term Effects of Cancer Series

Explore the long term effects that cancer may have on pelvic health, continence & intimacy, how to support patients and when to refer.

<https://www.eventbrite.co.uk/e/672983370377>

## Mental Health and Trauma after Cancer - Long Term Effects of Cancer Series

<https://www.eventbrite.co.uk/e/680123516747>

Explore the long term effects of cancer on peoples mental health and potential experience of trauma.

## The Financial Impacts of Cancer, Cancer - Long Term Effects of Cancer Series

Explore the possible financial impacts of cancer and what support is available to help.

<https://www.eventbrite.co.uk/e/704445544587?aff=oddtcreator>

## Macmillan Cancer Pathway Interface Programme – On Demand Webinar Collection

[Macmillan Cancer Pathway Interface Programme - YouTube](#)

**Catch up or rewatch our recent webinars on all things cancer CPD.**



# Funding

## GP Academic Fellowship

We are offering four GP academic fellowship posts, one for each Place within Surrey Heartlands. Please click [here](#) to see our website page and apply. Applications deadline: 31 October 2023.



## Funding available for Continued Professional Development CPD

CPD funding and support (up to £1000) is available for both clinical and non clinical staff working in Primary Care.



[Apply Now](#)

# Further Resources

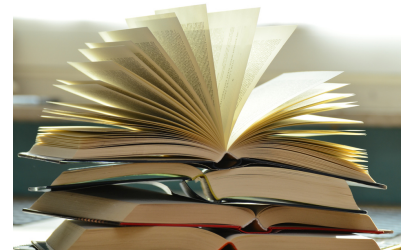
## Resources

### Your Evidence Librarians

Your Evidence Librarians, Kerry Seelhoff and Olwen Revill, can source relevant evidence for you to save you time & effort. Request an Evidence Search here or email [Kerry.Seelhoff@nhs.net](mailto:Kerry.Seelhoff@nhs.net) or [Olwen.Revill@nhs.net](mailto:Olwen.Revill@nhs.net)

Library services are delivering the following Munch & Learn sessions via MS Teams in October

Accessing electronic resources: Tuesday 10 October 12.30-1.00  
Academic writing tips: Tuesday 17 October 12.00-12.30  
Critical appraisal tips: Tuesday 3 October 12.00-12.30  
Evidence searching tips: Thursday 5 October 12.00-12.30  
Reflective writing tip: Thursday 19 October 12.00-12.30



Email Kerry Seelhoff ([Kerry.Seelhoff@nhs.net](mailto:Kerry.Seelhoff@nhs.net)) to book a session or for more details

### **Overview of the role of the First Contact Dietitian**

Do you employ, or are you considering employing a First Contact Dietitian? If so, attend this webinar to learn more about the role.

<https://www.bda.uk.com/events/calendar/first-contact-dietitians-in-primary-care-in-action.html>

### **Submitting an article for October**

If you wish to submit an article for consideration in the October Training Hub Newsletter, please do so by 10am, on Tuesday the 17th October to: [syheartlandsicb.surreytraininghub@nhs.net](mailto:syheartlandsicb.surreytraininghub@nhs.net)

Thank you for reading,

Surrey Training Hub team





# Meet the Team

## Spotlight on: Dr Gaya Rajasooriar GP Tutor - Surrey Downs

### 1. What does your job involve?

I have recently taken over as the GP tutor (GPT) for Surrey Downs, which I do alongside my Salaried GP job. GPTs provide clinical support for all primary care staff in terms of career development and training, as well as supporting recruitment and placements for non-clinical staff. My usual working day for this role is a Wednesday, but I can be contacted via email throughout the working week.

### 2. How long have you worked in the NHS/Training Hub.

I have worked in the NHS for over 10 years and with the training hub since August 2023. I also have a PGCE in Medical Education and have a wide range of undergraduate and postgraduate teaching experience starting from 2010.

### 3. What is your favourite book or song?

Book- 'Kite Runner' by Khaled Hosseini

Song- usually something from the Backstreet's Back album when I'm feeling nostalgic or in need of a boost!

### 4. Favourite holiday destination?

Cornwall

### 5. Dog or cat person?

Both. Pets are a wonderful addition to the family.

All monthly newsletters can be found on our website, please click here to view:

<https://www.surreytraininghub.co.uk/newsletter-e-bulletins>

