



Surrey Training Hub

WHATS ON | ISSUE 5 | AUGUST 2023

Welcome

Surrey Training Hub is your 'go to' place for any information about primary care workforce, education, training and development.

National events - 2023

World Physiotherapy Day: 8th
September

World Suicide Prevention Day:
10th September

World Patient Safety Day -
17th September

[More Info](#)



Protected Learning Time (PLT) Application Process (click for more)

As of June last year, the application process for individual GP surgery closures changed. Please ensure that you are using the most recent application form and that you are aware of the cover times.

Clinical Training

Limited spaces are still available for the following training and dates:



Asthma & COPD Foundation for Registered Clinicians (3 half days)

<https://www.eventbrite.co.uk/e/asthma-copd-foundation-for-registered-clinicians-3-half-days-tickets-609589798497?aff=oddtcreator>

5th, 12th & 19th September 2023 9:30 – 13:00. Spaces available for 3 half day. Asthma & COPD training, aimed at New GPNs and HCPs in a similar role (Virtual).

Anticoagulation Foundation

<https://www.eventbrite.co.uk/e/anticoagulation-foundation-tickets-630648455507?aff=ebdsoporgprofile>

28th September 2023 9:00 – 13:00. Book your place for Anticoagulation Induction Day for GPs, Nurses, HCAs and all clinical staff (Virtual).

Foundation Immunisation (2 DAY) For GPNs & NAs (Incl Childhood Imms)

<https://www.eventbrite.co.uk/e/669278880147>

21st & 22nd September 2023 9:30 – 16:00. **LAST SESSION OF 2023** Foundation Immunisation 2 DAY For GPNs & NAs. Incl Childhood Imms (Virtual).

Anticoagulation and DOAC Update - Virtual

<https://www.eventbrite.co.uk/e/629849997297>

4th October 2023 9:00 – 13:00. Spaces available for Anticoagulation and DOCA Update Training (Virtual).

Clinical Training

Leg Ulcer: Compression Bandaging & Doppler Theory.

<https://www.eventbrite.co.uk/e/673057070817>

12th October 2023 9:30 – 12:30. Leg Ulcer Compression Bandaging Training. Includes Doppler theory but must have already had Leg Ulcer Training (Face 2 Face).



Immunisations Update for Nurses & NAs - Incl Childhood Imms

<https://www.eventbrite.co.uk/e/673220680177>

25th October 2023 9:30 – 16:30. Immunisation Update Training for Nurses & NAs (Virtual).

Immunisation Update for HCAs, Paramedics & Pharmacists)

<https://www.eventbrite.co.uk/e/673266968627>

26th October 2023 9:30 – 16:30. Immunisation Update Training for HCAs, Paramedics & Pharmacists (Virtual).

Pill Check & Beyond

<https://www.eventbrite.co.uk/e/pill-check-and-beyond-tickets-639272289627?aff=oddtcreator>

15th November 2023 9:30 – 12:30 Contraception training for GPs, Nurses, HCAs, Physician Associates, Health & Social Care Practitioners

Performing ECG for unregistered staff

<https://www.eventbrite.co.uk/e/performing-ecg-for-unregistered-staff-virtual-1000-1130-tickets-631595247387?aff=oddtcreator>

21st November 2023 10:00 – 11:30 Performing ECG for unregistered staff - Virtual

Clinical Training

NHS funded Community Pharmacy training offers

New, fully funded, flexible training for community pharmacists is now available to help expand your clinical skills and improve patient care:

[Community Pharmacy Training Page](#)



E-GP e-learning session updated

For more information and to access the revised sessions, please visit the [e-GP programme page](#).

NHS England e-learning for healthcare has worked with the Royal College of General Practitioners to extensively review 18 sessions within the e-GP e-learning programme.

The reviewed content covers topics such as the GP consultation process, patient safety and quality of care, being a general practitioner and physical examinations.

Diabetes Hypo Awareness Week

CDEP are running a Diabetes Hypo Awareness week webinar. Please visit their website for more information:

<https://www.cdep.org.uk/view-details/296/Hypo-Awareness-Week-Webinar.htm>

The Management of Immunotherapy Toxicities & Professional Networking Event (29th September)

Please see details for a study day to GPs. The event is free to healthcare professionals:

<https://www.eventbrite.co.uk/e/the-management-of-immunotherapy-toxicities-professional-networking-event-tickets-662512862807>

Non-Clinical Training

Induction Session for Multi-Professionals New to Primary Care (Sessions run monthly starting from June-December 2023)

Our Aim:

To provide a supportive and informative environment through ongoing sessions for individuals entering the field of Primary Care.

Who is it For:

The session is designed for staff who are new to Primary Care, specifically targeting those who have recently started their positions. However, we believe that even staff members who have been in their roles for a few months may also benefit from participating. Sessions are to complement your local induction at practice level.

The programme includes:

- Introduction to Primary Care
- How the Training Hub supports you – booking training, funding, meet the team
- Population Health & Health Inequalities
- Introduction to Equality, Diversity & Inclusion
- Library & Knowledge Services
- Whistle Blowing Policy
- Health & Wellbeing Awareness

To Book:

[Click here to book onto a session](#)



Non-Clinical Training

GPA

Expressions of interest open for the next GPA Cohort beginning 2023
[EOI General Practice Assistant](#)



GPA framework is an experiential course that is led by a GP in practice. The training course is a six month practical course, delivered in practice by a GP mentor.

[For more information click the link](#)

Physical activity awareness training for professionals and volunteers supporting adults

We are pleased to offer another opportunity to book onto the 'Raising Issue Of Weight' workshop.

The session will take place on Wednesday 20 September 2023, 10.00-11.00am via Zoom.

The Raising Issue of Weight Training is designed to assist professionals and others working with families to raise the issue of children who are above a healthy weight range. The session objectives are as follows:

- . To be aware of the prevalence of childhood obesity in Surrey
- . To understand the causes of obesity
- . To increase confidence in raising the issue of weight with families
- . To be aware of Be Your Best family weight management programme and how to refer/signpost.



'I wouldn't have raised the issue before with parents, but feel more confident now to do so and also how to refer into the service' (delegate)

There are a maximum of 60 spaces available for this online workshop. Bookings can be made by visiting –

<https://bookwhen.com/activesurreyevents/e/ev-s64h-20230920100000>

Non-Clinical Training

Embedding EDI into Primary Care – free training

Are you keen to improve equality, diversity and inclusion in your practice but don't know how to get going? NHS England are providing some workshops to support you.

Sign up to the workshops here: <https://se.leadershipacademy.nhs.uk/development-opportunities-and-support/primary-care/embedding-equality-diveristy-and-inclusion-into-primary-care/>



Cancer as a long-term condition for social prescribers

<https://www.eventbrite.co.uk/e/522524243077>

Learn more about the changing story of cancer, why for many we may think of it as a long term condition and how you can support those living with and beyond cancer with their health and wellbeing.

St Luke's Cancer Centre Open Day

<https://www.eventbrite.co.uk/e/640488166347>

See the patient journey from behind the scenes; tour the treatment areas hear from key MDT speakers and meet and network with other local professionals over a free lunch.

Continence & Intimacy after Cancer - Long Term Effects of Cancer Series

<https://www.eventbrite.co.uk/e/672983370377>

Explore the long term effects that cancer may have on pelvic health, continence & intimacy, how to support patients and when to refer.

Non-Clinical Training

Mental Health and Trauma after Cancer - Long Term Effects of Cancer Series

<https://www.eventbrite.co.uk/e/680123516747>

Explore the long term effects of cancer on peoples mental health and potential experience of trauma.

Macmillan Cancer Pathway Interface Programme – On Demand Webinar Collection

[Macmillan Cancer Pathway Interface Programme - YouTube](#)

Catch up or rewatch our recent webinars on all things cancer CPD.

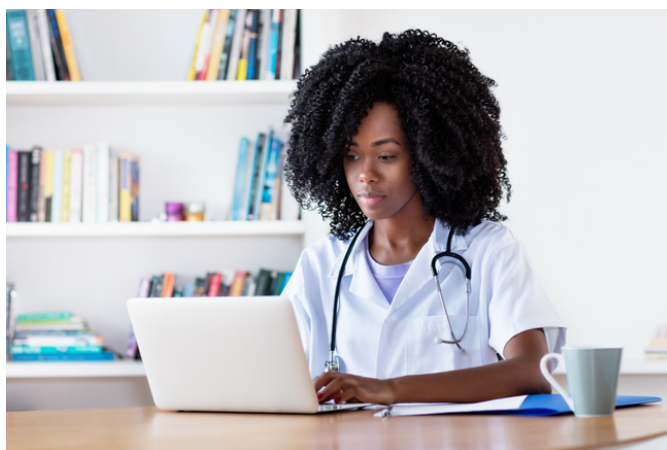


Funding

Practice Assessor Training Grant

The Surrey Training Hub is offering an Education Grant of £250 to support nurses to undertake the online Practice Assessor course.

Click [here](#) for course details and please contact Kelly Slavin at the Surrey Training Hub for more information at k.slavin@nhs.net



Funding available for Continued Professional Development CPD

CPD funding and support (up to £1000) is available for both clinical and non clinical staff working in Primary Care.



[Apply Now](#)

Leadership

Global Majority Leadership Masterclass

The NHS England South East Global Majority Network invites you to register your interest for their upcoming Professional Leadership and Development virtual masterclass, which is aimed at band 5 and band 6 nurses and midwives from the global majority (Black, Asian, and Minority Ethnic and those who were trained outside the UK) communities.

The session will run virtually on Thursday 14 September, and Tuesday 17 October.

For further information on these masterclasses please see the [digital flyer](#). To register your interest to attend the masterclass, please fill out the [registration form](#).



Submitting an article for September

If you wish to submit an article for consideration in the September Training Hub Newsletter, please do so by 10am, on Tuesday the 19th September to:

syheartlandsicb.surreytraininghub@nhs.net

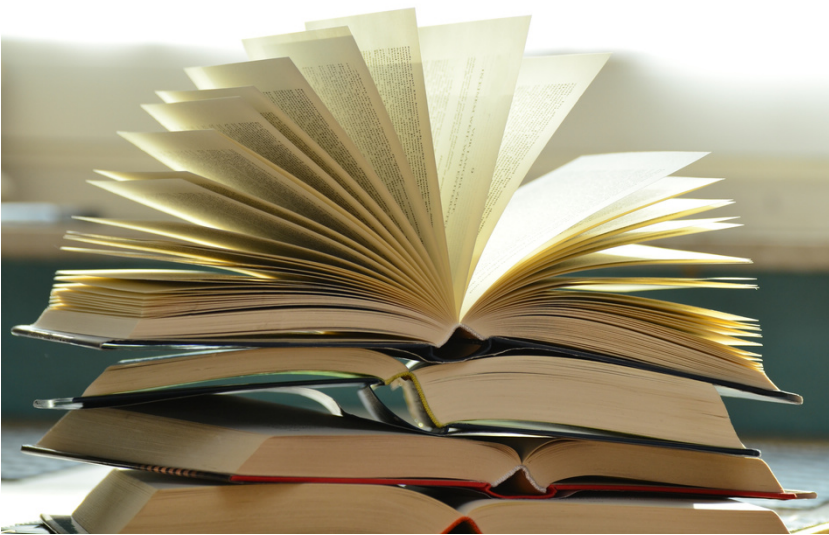


Further Resources

Resources

Your Evidence Librarians

Your Evidence Librarians, Kerry Seelhoff and Olwen Revill, can source relevant evidence for you to save you time & effort. Request an Evidence Search here or email Kerry.Seelhoff@nhs.net or Olwen.Revill@nhs.net



The latest edition of the [South East RePAIR newsletter](#) is now available.

In this issue, we focus on initiatives in the region aimed at hearing the student voice, supporting students transition into employment, supporting newly registered practitioners, and other exciting work going on under the RePAIR programme.

Please share it with anyone in your networks who might be interested.

Thank you for reading,

Surrey Training Hub team





Meet the Team

Spotlight on: Hannah Burchell, Project Support Manager

1. What does your job involve?

I am one of the Project Support Managers working for the Surrey Training Hub. I am responsible for coordinating and assisting on a variety of different workstreams, currently my main projects include the scheduling and planning of the Training and Education sessions and also the Clinical Learning Environment Assessments - both very rewarding.

2. How long have you worked in the NHS/Training Hub.

I am still very premature into my NHS journey, about 18 months now (time flies)!

3. What is your favourite book or song?

Tough question I couldn't possibly pick just one, BUT "Don't Stop Believin'" by Journey never fails to get my up on the dance floor.

4. Favourite holiday destination?

Yet to be discovered - the world is a big place! Rome certainly stole my heart though. I'm going to the big NYC for Christmas this year, which will be very special and could potentially be my favourite - TBC.

5. Dog or cat person?

I have both and I'd feel very guilty picking just one haha, Chester (the dog) and Alfie (the cat) ❤️.

All monthly newsletters can be found on our website, please click here to view:

<https://www.surreytraininghub.co.uk/newsletter-e-bulletins>

