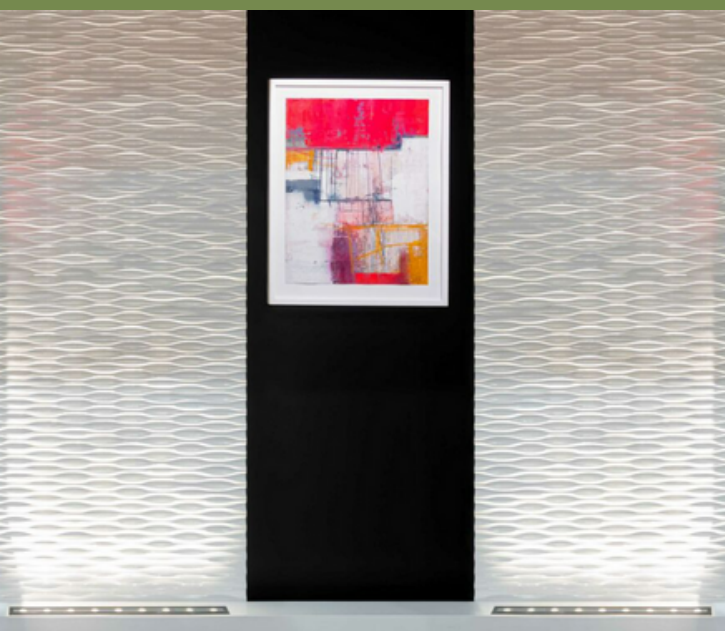


## Background:

John Cullen Lighting is an award winning lighting specialist who has pioneered architectural lighting for over 40 years, creating high-end, miniaturised luminaries that deliver premium quality light without compromise.

## Outcome:



Their latest offering, the Contour Edge, is an in-ground, recessed wall 'grazer' designed to glide light gracefully along vertical surfaces, picking out and emphasising architectural textures and features – in both interior and exterior applications.

Due to the nature of its intended use, it's highly likely that the Contour Edge will be situated in positions where sideways glare could be problematic for the end user, for example when placed parallel to corridor walls.

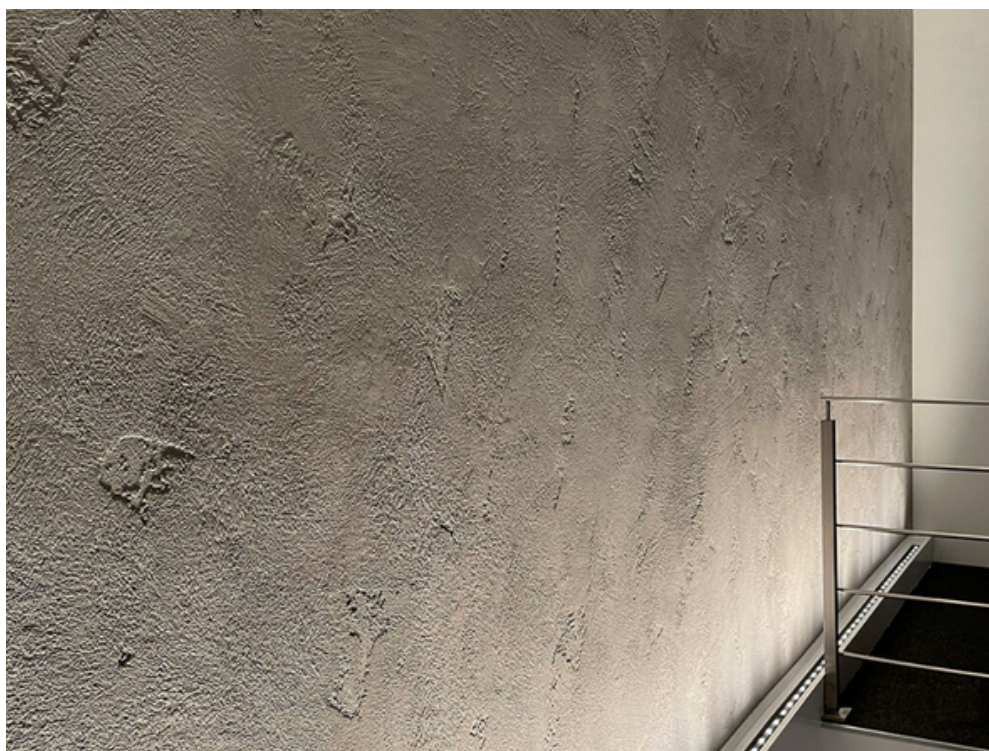
# MICROLOUVRE<sup>®</sup>

helps remove light pollution with it's ability to hide the light source

The use of Microlouvre Koolshade® K700/0° fabric integrated into the luminaires effectively neutralises all sideways glare, without disturbing the light projected forwards onto the illuminated surface.

Combined with screen-printed glass to protect the viewer from bounce-back glare, Contour Edge is one of the most visually comfortable in-ground recessed luminaires on the market, without compromising output or quality.

# JOHN CULLEN



Resulting in:

- Neutralised glare
- Non-existent light trespass and pollution
- A sustainable answer made from +90% recycled copper scrap