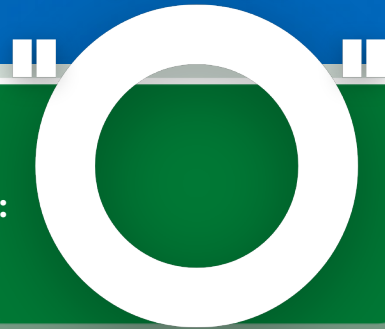




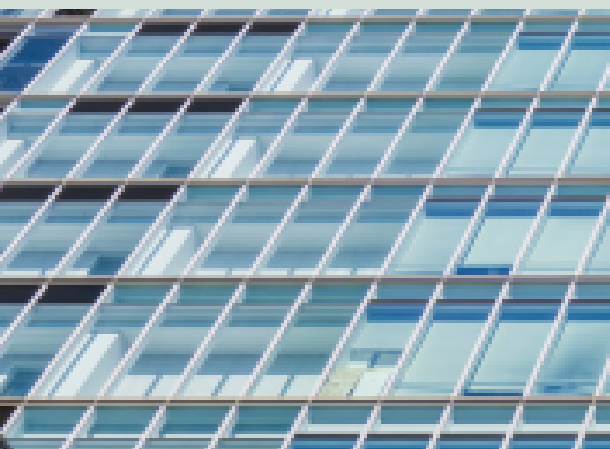
SUSTAINABLE LIVEABLE HOMES

PART



Requirement O1:
Overheating mitigation. Regulations: 40B

Approved **DOCUMENT**:



What is Part O?

Approved Document O covers the overheating mitigation requirements of the Building Regulations for designing and constructing buildings to limit unwanted solar gains in summer and provide an adequate means of removing excess heat from the indoor environment.

Overheating of buildings is not a new issue. Previously, it has been partially addressed with assessment tools and guidance by various bodies, but for the first time, the UK Government, in the form of the Department for Levelling Up, Housing and Communities (DLUHC) has firmly addressed the issue and it is a **LEGAL REQUIREMENT**.

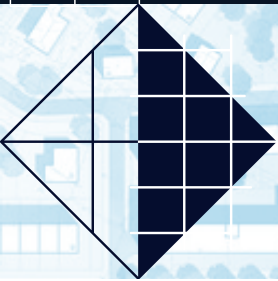


Effective from **15 June 2022**

- **LIMIT UNWANTED SOLAR GAINS IN SUMMER**
- **PROVIDE AN ADEQUATE MEANS TO REMOVE HEAT FROM THE INDOOR ENVIRONMENT**
- **USE EXTERNAL FIXED & PASSIVE SHADING DEVICES (NOT INTERNAL BLINDS OR CURTAINS)**

TYPES OF BUILDING COVERED BY PART O

Residential and institutional dwellings, including care facilities and student accommodation, anywhere you would stay overnight (but excluding hotels), ranging from a single storey house to a high-rise apartment block.



THINK WIN-WIN

The Planet is warming up and the Climate is changing
Products are available to help part O compliance
Sustainable, livable homes are in reach

This InfoGraphic is brought to you by



Download the free Whitepaper now.