

**Thickness of fabric:**

2.26mm coated

**Weft width:**

1.7mm coated

**Weft thickness:**

0.38mm coated

**Louvre pitch:**

1.5mm centre to centre

**Gap between each louvre:**

1.12mm coated

**Warp spacing:**

12.70mm centre to centre

**Fabric Weight:**

1.35kg / m<sup>2</sup>

**Clear open area:**

80%

**Fabric composition:**

90% CuZn15 (C230) commercial bronze and 10% CUSi3Mn1 (C655) silicon bronze

**Finishes:**

Polyester powder coat in any RAL colour (with the ability to create designs on the fabric which are directionally visible)

**Fire rating:**

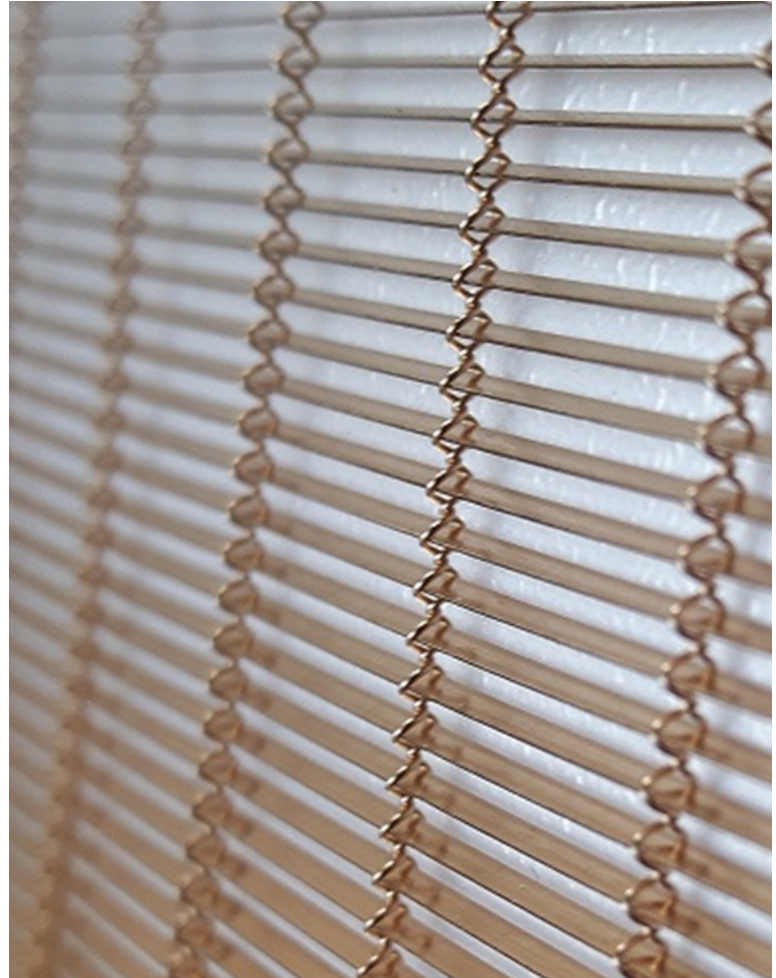
Class A1/A2-s1,d0 in accordance with BS EN 13501-1:2007+A1:2009

**Resistance to wind:**

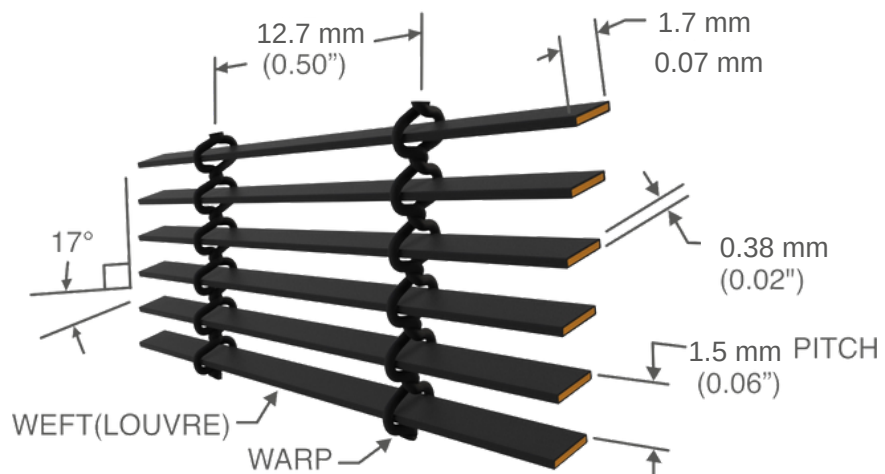
Hurricane proof: 100mph/160kph

A result of decades of extensive international research and development, KoolShade is a high-performance, woven metal fabric, with its weft constructed of bronze louvres. It can be used in its fabric form or tensioned in a frame, for controlling and diffusing sun, light and air.

The micro-fine louvres are angled to suit a number of applications, whether to ensure optimum light in or redirect light, whilst blocking heat and glare, or to allow ventilation and filtration of air.



**It's known as angular selective technology.**



\*All angles, weights and dims are nominal

Solar Shading

Fire Protection

Heat Attenuation

Architectural Glazing

Lighting Design

Glare Protection

Pest Protection

Privacy and Security

Interior Design

**Visit us:**

[www.smartlouvre.com](http://www.smartlouvre.com)

**Talk to us:**

+44 (0) 239 245 6333

**Request a sample:**

[info@smartlouvre.com](mailto:info@smartlouvre.com)