



Case Study

November 2019

DCI RUNS SHIP-SHAPE PROJECT AS PRINCIPAL DESIGNER & PRINCIPAL CONTRACTOR FOR NEW WAREHOUSE STORES PROJECT Cavendish Ships Stores, Segensworth



Above: Work starts on constructing the cold room.
Left: A high level cooling unit operating in the 35,000 sq. ft. facility.

From here, the company supplies major cruise and ferry lines and overseas retail customers. Alongside duty free beverages and non-chilled items, the facility holds a vast amount of ambient, chilled, frozen and bonded foods - the majority of which require efficient chilling on a large scale.

The project

One of the UK's premier suppliers to the shipping industry, Cavendish Ships Stores recently expanded its operation with a new facility at Segensworth in Hampshire.

Cavendish turned to DCI not only for design and installation of the refrigeration system but also for full management of the entire CDM project.

continued...



WARRIOR BUSINESS CENTRE
FITZHERBERT ROAD, FARLINGTON
PORTSMOUTH PO6 1TX

T: 023 9238 1799
E: SALES@DCIGROUP.UK.COM
W: WWW.DCIGROUP.UK.COM

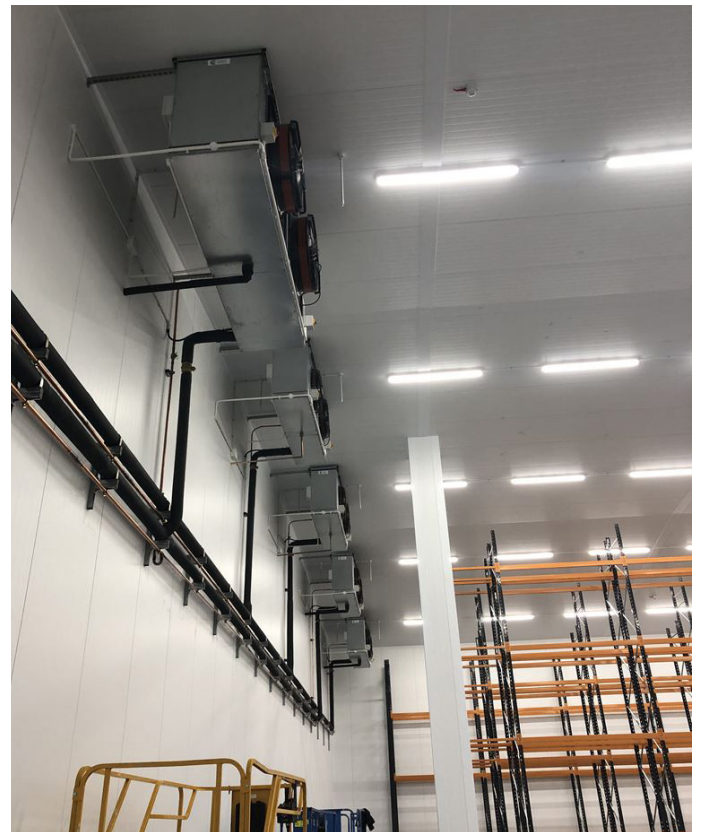
The challenge

DCI had to design and install a refrigeration solution that maximised effectiveness and efficiency while optimising storage space and incorporating the requirements of racking, smooth day-to-day operations and the management of all trades on the project.

The solution

Appointed as Principal Designer and Principal Contractor, DCI oversaw all aspects of their own and other suppliers' works, adhering to CDM regulations and ensuring the highest Health and Safety standards throughout the three month project. Working closely with the client and all contractors, handover of the project was achieved on time and on budget.

DCI has subsequently been requested to undertake ongoing service and maintenance for the facility.



Refrigeration works for the project included:

- Bespoke manufactured refrigeration plant (3 x refrigeration packs - 2 x LT and 1 x HT) with 3 x remote condensers
- All refrigeration installation - including 7 x evaporators
- Steelwork support installation
- Cold room installation - 729m² Freezer / 257m² Chiller
- Ventilation
- Mains electrical works
- LED lighting - cold room and warehouse
- Emergency lighting
- Bespoke cold room control panels
- Cold room wiring
- Refrigeration control wiring
- RDM alarm network wiring

