



NYTON HOUSE

RESIDENTIAL CARE HOME

A family run home offering
excellence in care
in elegant surroundings

“Our guiding principle is to deliver care to a standard that we would expect for our own parents and loved ones.”



NYTON HOUSE
RESIDENTIAL CARE HOME

Passionate about Care

For the last 40 years, Nyton House has been providing outstanding care in a beautiful rural setting on the outskirts of Chichester, West Sussex. Nyton remains a family run Residential Care Home shaped by our guiding principle to deliver care of standard we would expect for our own parents and loved ones.

Our aim is to enable residents to live a happy and fulfilling life. We empower residents to make their own choices and treat everyone with dignity and respect. Nyton is a 'Home from Home' where residents are part of a community and feel genuinely cared for by passionate and committed staff.



We tailor care to meet the individual needs of each resident offering:

- Companionship in a supporting environment
- Personal Centred Care Plans and continually reviewed Goals for Care
- Dementia care that focuses on re-enablement and dignity
- End of Life Care with staff trained in the Six Steps to End of Life Care
- Respite care and day care

Individually decorated rooms with a period charm and stunning views of the gardens

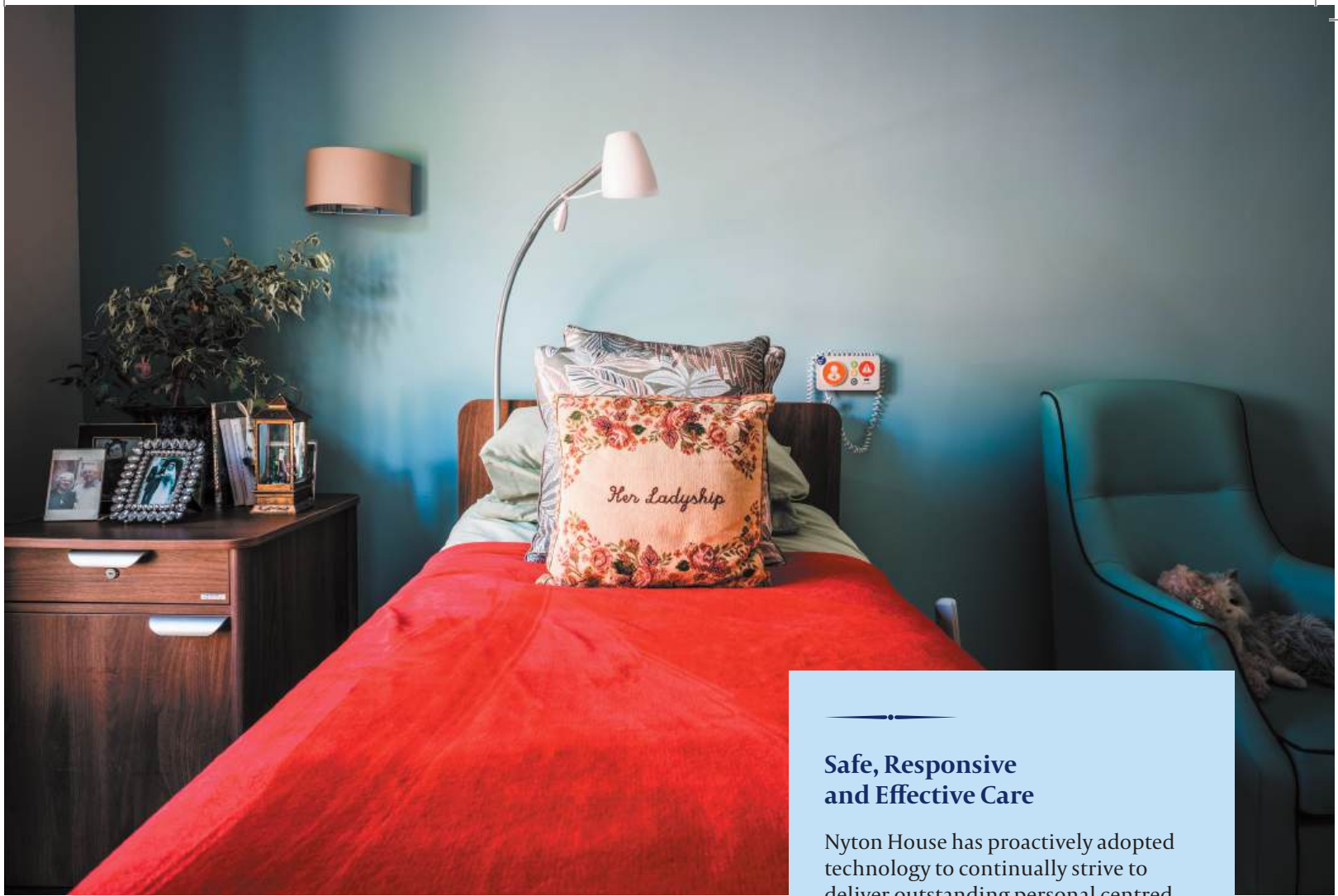
Nyton House can accommodate up to 44 residents in single or double rooms across three buildings: Nyton House, The Coach House and Nyton Gables on the six-acre site.

Each spacious room is tastefully furnished with antique furniture, a recliner chair and a state-of-the-art profiling bed. All bedrooms have wash basins; most have full en-suite shower rooms or bathrooms. Rooms also include a television, direct dial telephone and WIFI. Most ground-floor bedrooms have patio doors to allow easy access to the beautiful grounds. A service lift provides easy access to all floors.



Our Wissner-Bosserhoff Care Beds offer uncompromising levels of comfort and safety. Fully height adjustable profiling beds with innovative rehabilitation and safety features.





Safe, Responsive and Effective Care

Nyton House has proactively adopted technology to continually strive to deliver outstanding personal centred care. We have partnered with LeeCare to develop electronic care plans that help direct and evidence care and enhance communication with General Practitioners, District Nurses and the Hospital Avoidance Team.

Our medication is electronically managed to ensure we support the safe and effective use of medication.

Dignity Matters

Our highly skilled staff provide care and attention to reflect the needs of our individual residents, upholding dignity and respect at all times.

- Continually offering choice and being involved in care decisions
- Communication
- Supporting with eating and nutritional care
- Pain management
- Personal hygiene
- Respecting the privacy of our residents
- Social inclusion irrespective of disability





Facilities

Our charming residents lounge provides an elegant space to read the papers with morning coffee or entertain guests while taking afternoon tea.

Other communal spaces include a large conservatory with views of the gardens and an intimate library that provides a homely area to watch television with company, or read from a selection of books or magazines.

Our Beauty Salon and Nail Bar ensure residents are able to maintain a sense of pride in their appearance with weekly hairdressing and manicuring included in the room fee.

We have a 7-seater wheelchair accessible vehicle and Nyton offers excursions on a daily basis.

Our extensive gardens are beautifully maintained, and we have a number of raised beds to allow residents to garden their own plot. We also have a tea room in the orchard with views of the lake and doves.

Westergate and Aldingbourne offer a good range of village amenities which we assist our residents in accessing. We support residents in their weekly worship, with Methodist, Catholic and Church of England churches all within a mile of the home. We also offer a Christian service once a month in the home.

It's rare for a care home to provide an environment that feels like home.



Activities and Catering

Our aim is to enhance intellectual and social well-being by helping residents socialise, maintain existing hobbies and interests and encouraging friends and family to interact in our activities.

- Excursions to local attractions and places of interest
- Weekly community group coffee morning and monthly luncheons
- Gentleman's luncheons at Local pubs and weekly Saturday drinks at the Gribble Inn
- Weekly bridge lessons
- Residents choir
- Ladies luncheons at local garden centres or National Trust properties
- Active minds talks
- Weekly quiz
- Creative Mojo art club
- Gardening club
- Dementia specific games and reminiscing
- Beach visits, theatre and cinema trips
- Special events
- Sporting events



Our aim is to enhance intellectual and social well-being by helping residents socialise and maintain existing hobbies & interests

Our HoliDay scheme launched in 2018 ensures every resident has one special day a year, a truly memorable day that we try to involve their family in. Trips to the Isle of Wight, vineyards, golf days, riding lessons, anything is possible with the will and a little creative thinking.

We work closely with the community to support local events and have strong ties with the Parish of Aldingbourne, Barnham and Eastergate and the Six Villages Schools. Children play a key role in helping bring a sense of life and laughter into the home. We frequently arrange parties and special events for the children of residents, family and staff and these help to create memorable interactions with our residents.





**Locally sourced
high-quality
ingredients
to prepare
'traditional
home-style'
dishes.**

**"There is no love sincerer
than the love of food."**

We understand the essential role food plays in our lives. Our 'two week' menu changes every season, using locally sourced high-quality ingredients to prepare 'traditional home-style' dishes.

- We focus on choice, presentation, flavour and texture
- Seasonal menu
- Local suppliers using high-quality local produce
- All dishes are prepared freshly each day
- Homemade cakes made daily for afternoon tea
- Regular celebratory luncheons



Home-Style Dementia Care

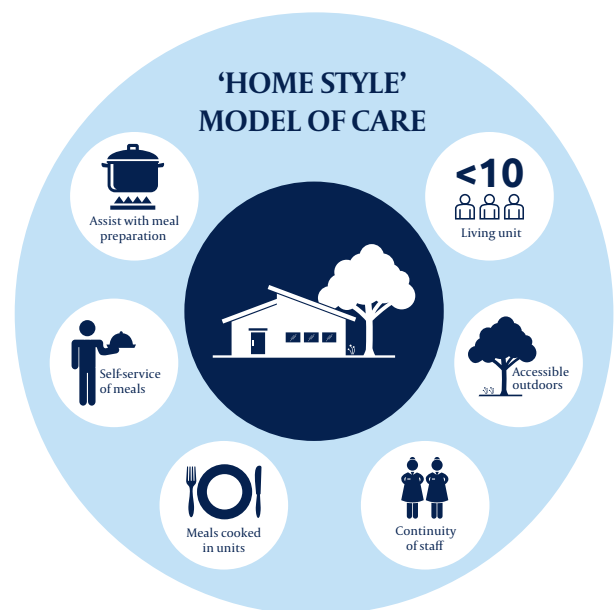
Improving quality of Life for residents with Dementia



Based on the 'Inspired' research project in Australia, Nyton set out to create a Home-Like clustered domestic Model of Care. Traditional residential aged care settings tend to be large facilities based on the medical model. At Nyton, we believe the environment is key. We set out to develop a domestic feel to the Coach House & Nyton Gables to encourage and support independence and re-enablement.



The Gables and Coach House units allowed us to think outside the box and create a unique care setting with facilities, equipment and enhanced support. Nyton House is not a Nursing Home, and the 'Home Like Model' of care is only suitable for residents with Mild-Moderate Dementia due to the open communal style of living.





Safer, more independent living for residents is supported through innovative use of technology



Our philosophy:

- Help residents to feel at home in their own room and shared spaces
- Flexible care routines
- Sufficient staff numbers to allow carers to spend time with residents
- Provide easy access to outdoor spaces and gardens to promote well-being
- Create opportunities to feel valued and independent irrespective of cognitive disability

Rooms

We've partnered with multi award winning interior designers HomeSmith's to create rooms that feel like home while reflecting the latest research into dementia friendly environments.

We have tried to support wayfinding without losing the Home-Like feeling and have considered colour, lighting and furnishing in order to create a safe, familiar and calming space.



NYTON HOUSE

RESIDENTIAL CARE HOME

www.nytonhouse.co.uk
email: manager@nytonhouse.co.uk
01243 543228

Nyton House Residential Care Home,
Nyton Road, Westergate, Chichester, PO20 3UL